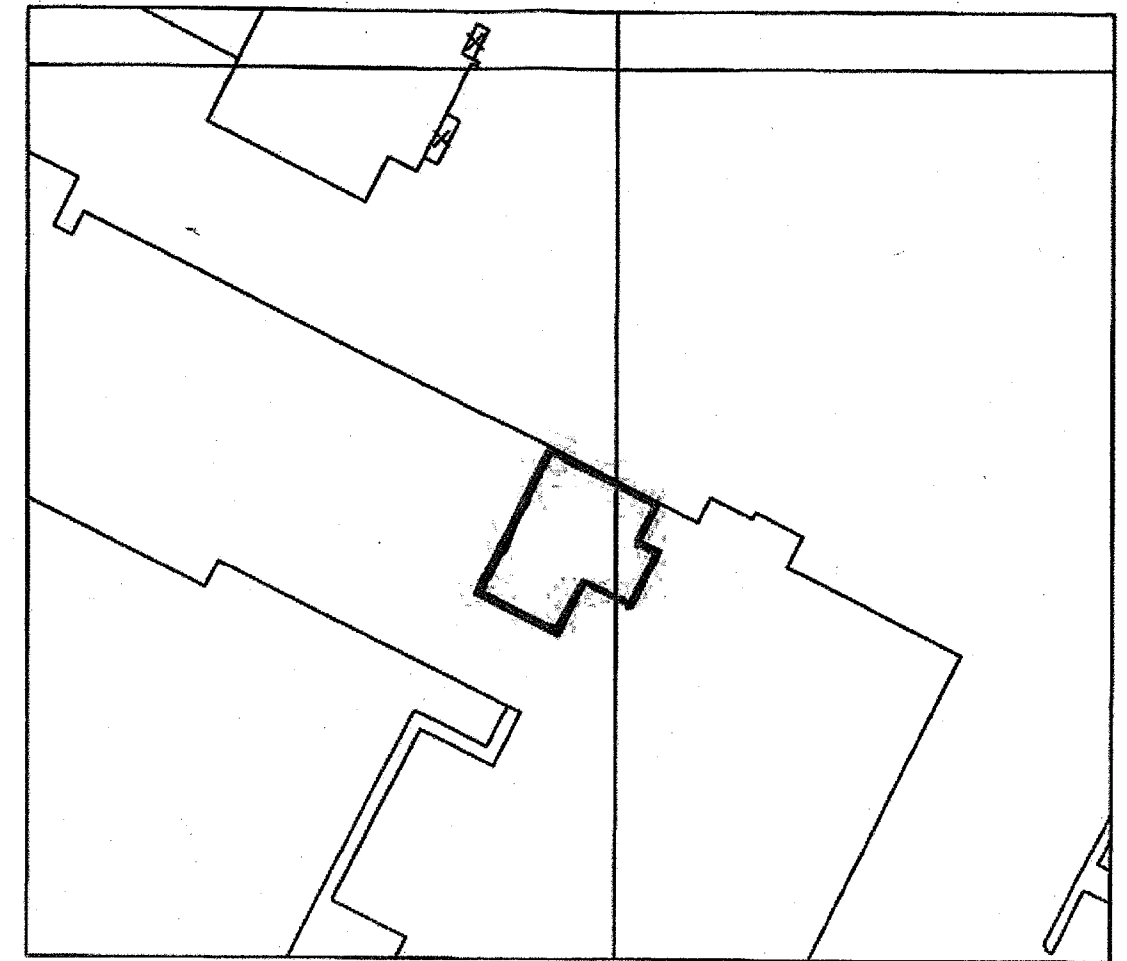
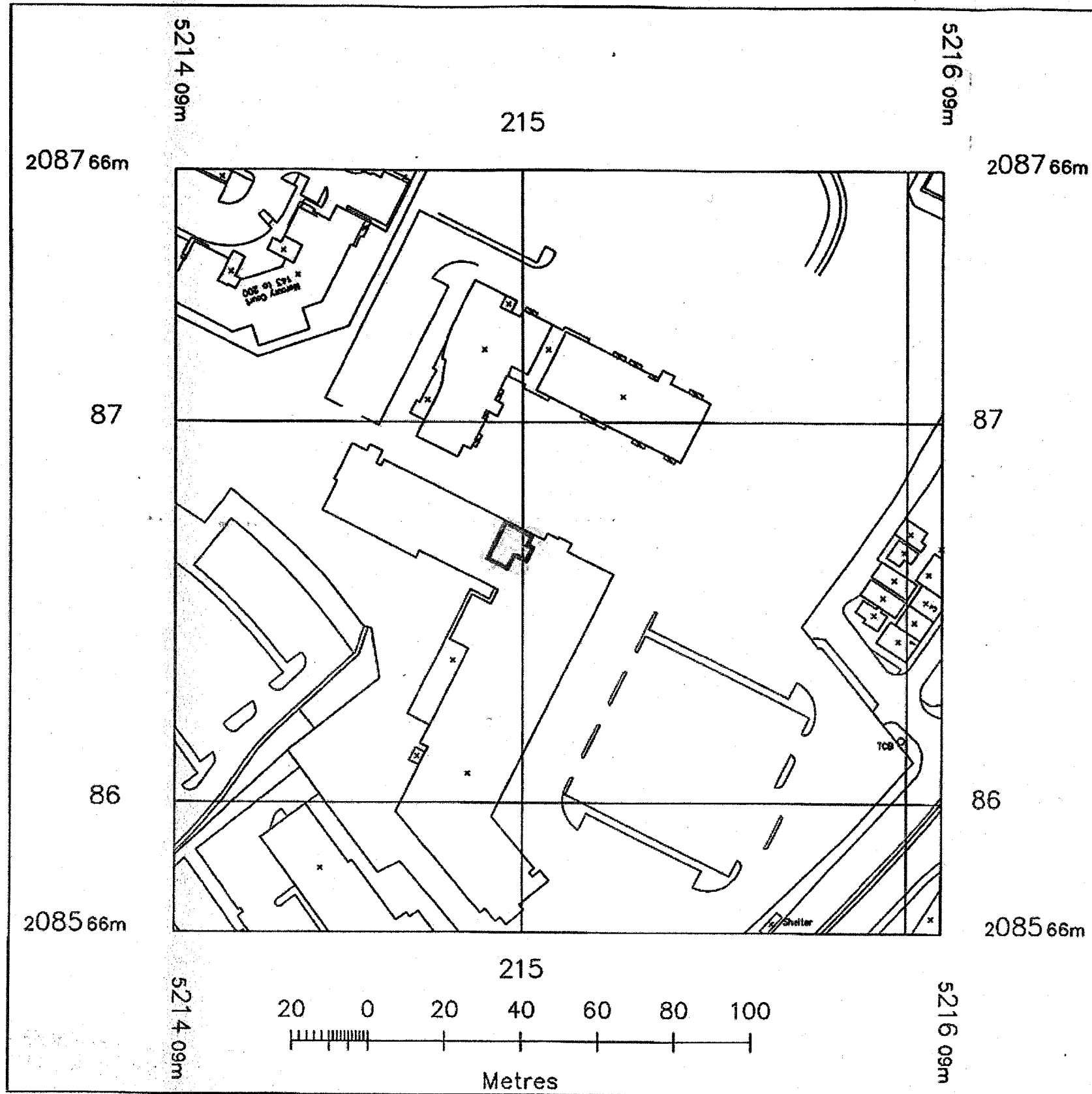


Issued on the condition that it is not copied or  
distributed by, or to, any unauthorised persons  
without prior consent in writing from IPS.  
All dimensions to be checked on site prior to  
any fabrication.  
All errors, omissions and/or covered inconsistencies  
to be reported to the C.A. immediately.  
Drawings show design intent only.  
DO NOT SCALE DRAWINGS



N



PLANNING  
DEPARTMENT  
OFFICE COPY

17 JUN 2008

NO. S:6/2008/932/A-D

**IPS**

INTERIOR PROJECT SERVICES

55 Meadoway  
Steeple Claydon, Bucks, MK18 2PA  
Tel: 01296 730984, Fax: 01296 738608  
email: gordon@interiorpe.co.uk

Client  
MAIL BOXES ETC

Project  
9 Parkhouse Court  
HATFIELD  
HERTFORDSHIRE AL10 9RQ

Drawing  
SITE PLAN &  
LOCATION PLAN

Scale  
1:500 & 1:1250

Date  
DEC 07

Drawn  
GOR

Number  
WD/1050/05

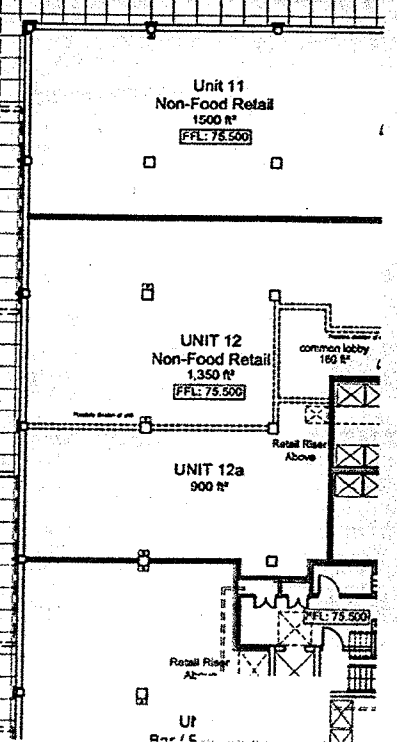
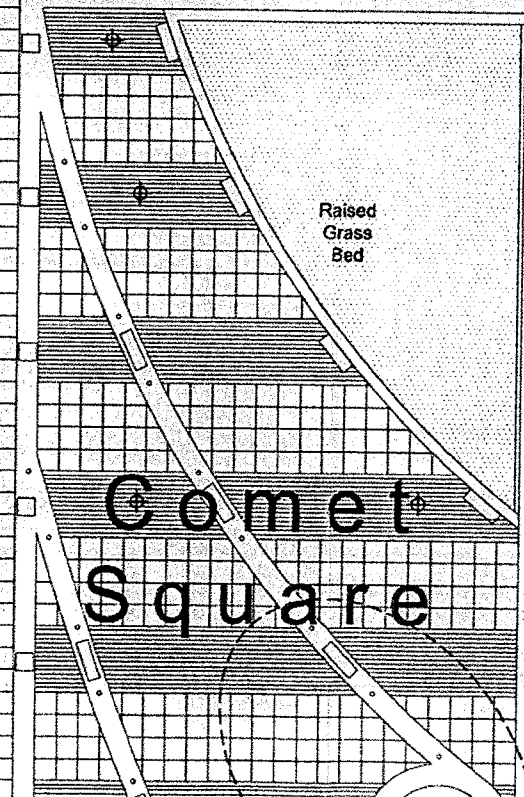
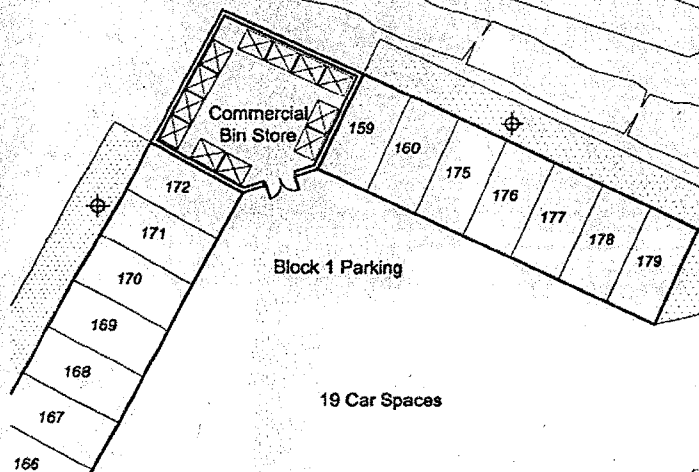
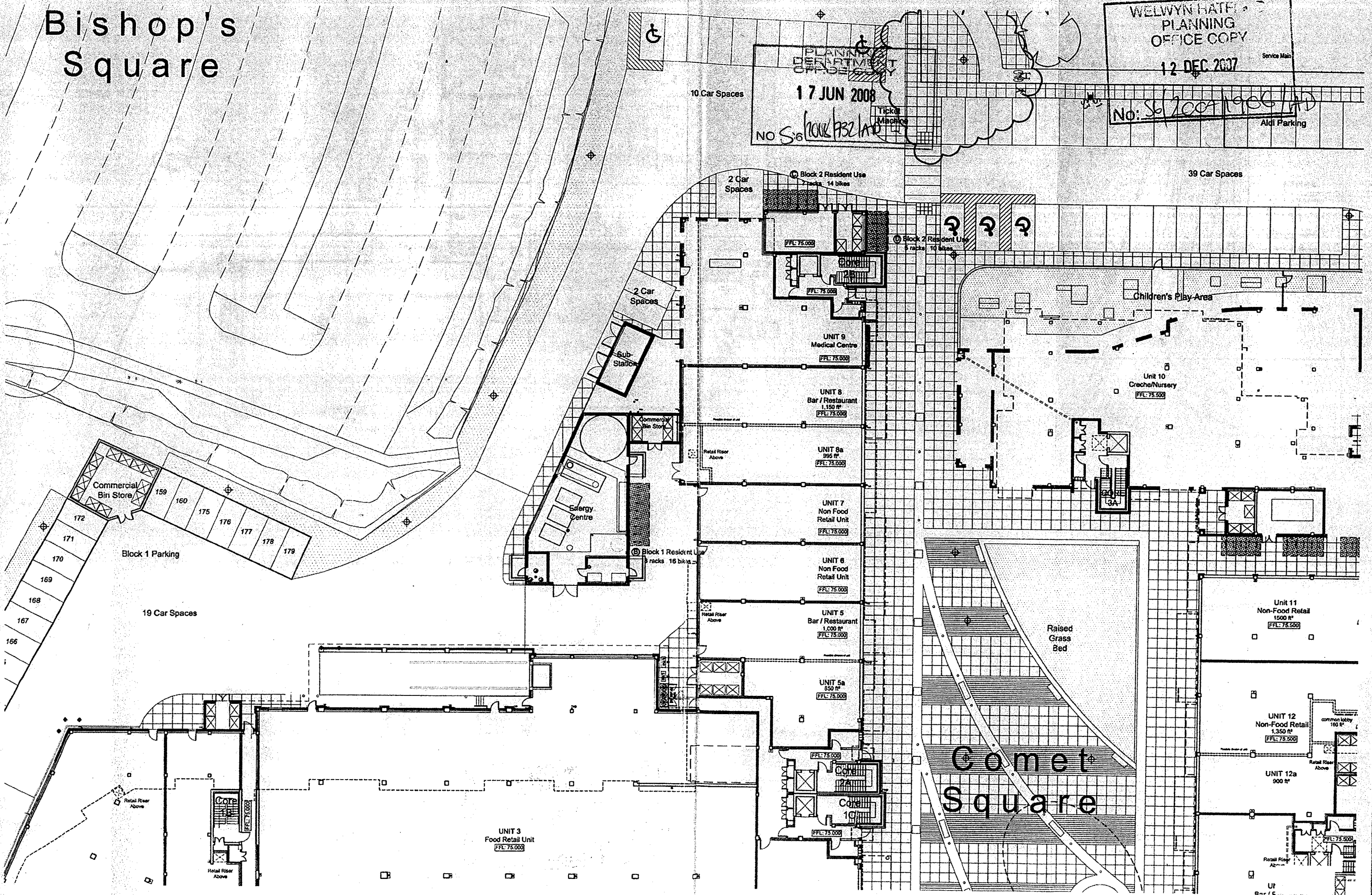
Revision

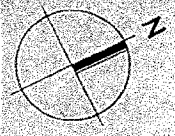
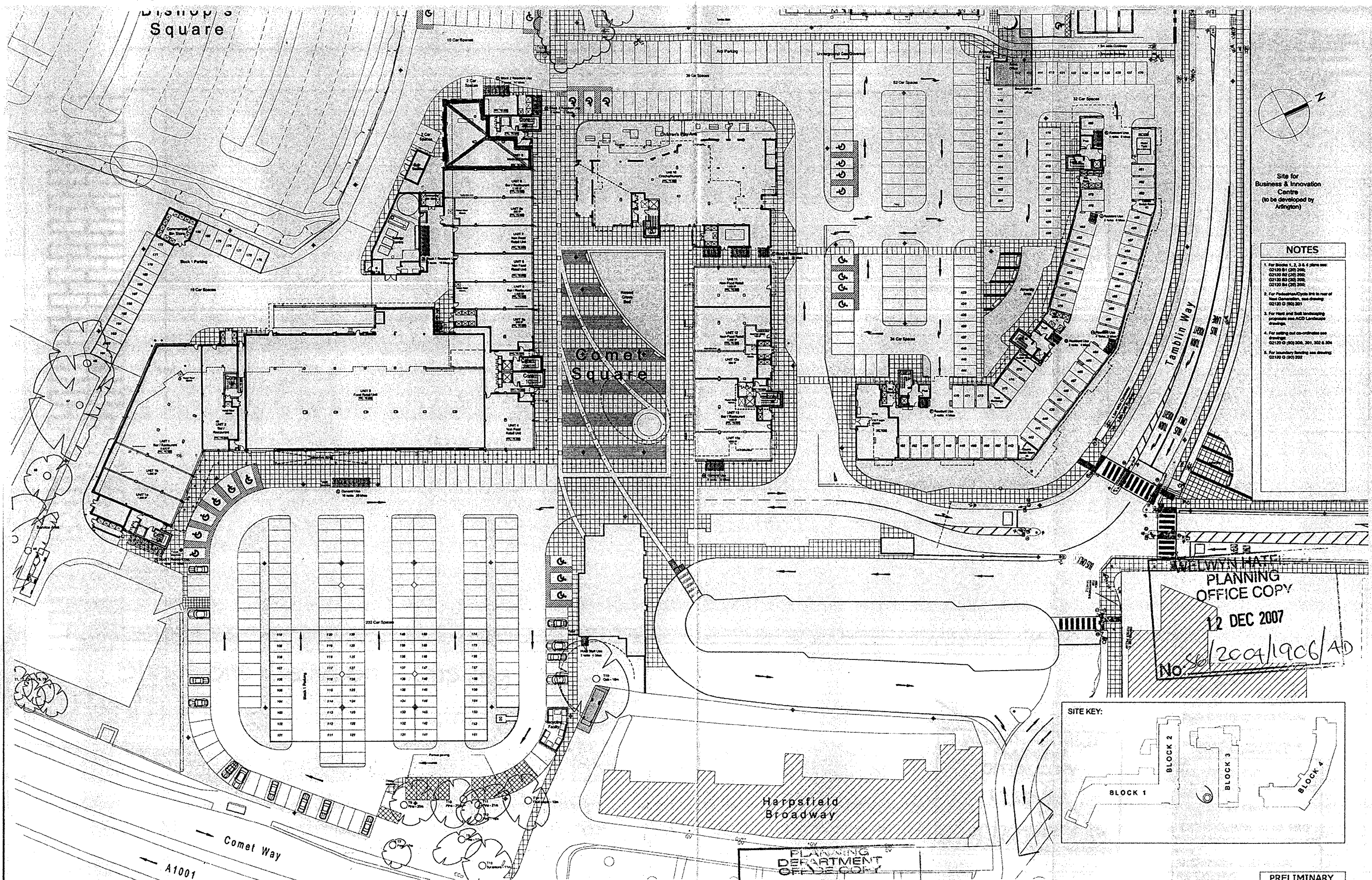
Bishop's Square

SIGNAGE

WELWYN HATFIELD  
PLANNING  
OFFICE COPY  
12 DEC 2007  
No: SA/2007/1906/AD

PLANNING  
DEPARTMENT  
OFFICE COPY  
17 JUN 2008  
NO S:6/2008/P32/AD





Site for  
Business & Innovation  
Centre  
(to be developed by  
Arlington)

**NOTES**

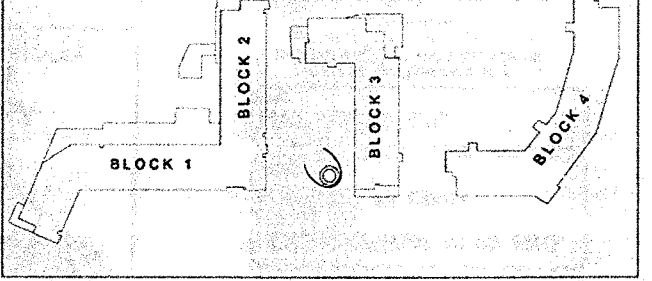
1. For Blocks 1, 2, 3 & 4 please see:  
G2120 B1 (00) 200;  
G2120 B2 (00) 200;  
G2120 B3 (00) 200;  
G2120 B4 (00) 200;
2. For Foundations/Cycle pits to rear of  
Main Caravan, see drawing  
G2120 G (00) 201
3. For Heat and Soil Landscaping  
propose see ACD Landscape  
drawing.
4. For setting out co-ordinates see  
drawings:  
G2120 G (00) 200, 201, 202 & 204
5. For boundary fencing see drawing  
G2120 G (00) 202

WELWYN HATE  
PLANNING  
OFFICE COPY

12 DEC 2007

No 86/2004/1906/AD

**SITE KEY:**



PLANNING  
DEPARTMENT  
OFFICE COPY

17 JUN 2008

No 86/2008/1932/AD

**PRELIMINARY**

PRELIMINARY	
DESIGN	
TENDER	
CONSTRUCTION	

**powelldobson**  
ARCHITECTS

Drawing No. Rev.  
G2120 G (00) 200 K

Contract: Barratt North London  
Comet Square Phase II, Hatfield  
Title: Ground Floor Site Plan

- This drawing must not be scaled.  
Found dimensions and levels to be used.  
Any inaccuracies must be notified to the architect.  
Detail drawings and large scale drawings take precedence over smaller drawings.
- Revisors:
- |   |          |     |  |
|---|----------|-----|--|
| A | 19.08.05 | AF  | Boundary clarified. Proposed hotel and luncheon club defined for clarity. Drawing number revised. Insert site location sketch.   |
| B | 05.08.05 | AF  | Site layout adjacent Unit 1 and sub-station location revised as reviewed by Frontier and notified by DNL. Add delivery ramp length indicated as shown on JHP drawings.   |
| C | 11.12.05 | AF  | Site boundary revised to include turning head at rear of Unit One. Ticket machine adjacent hotel entrance moved to be clearly visible DNL site. Main road (Tamblin Way) layout revised to DNL construction drawings. |
| D | 14.10.05 | AF  | Energy Centre plan added.  |
| E | 14.02.06 | AF  | Block Plans generally updated: see respective floor plans. Notes added, North Point added.   |
| F | 11.01.06 | CHT | Private car parking numbers as agreed with Barratt, cycle route added (see to be agreed). Locations of disabled cycle revised. Car parking still to be agreed with planner.  |
| G | 23.04.06 | CHT | Cycle parking revised to show previous scheme.   |
| H | 18.04.06 | CHT | Cycle parking added, see agreed from planner 18-04-06. Car parking numbers amended.  |
| J | 24.04.06 | AF  | Car park ticket machine added outside adjacent cycle park on white. Add store - as contract drawings.  |
| K | 11.07.06 | CHT | Amenity area adjacent to Core 2B amended as agreed with planner.   |