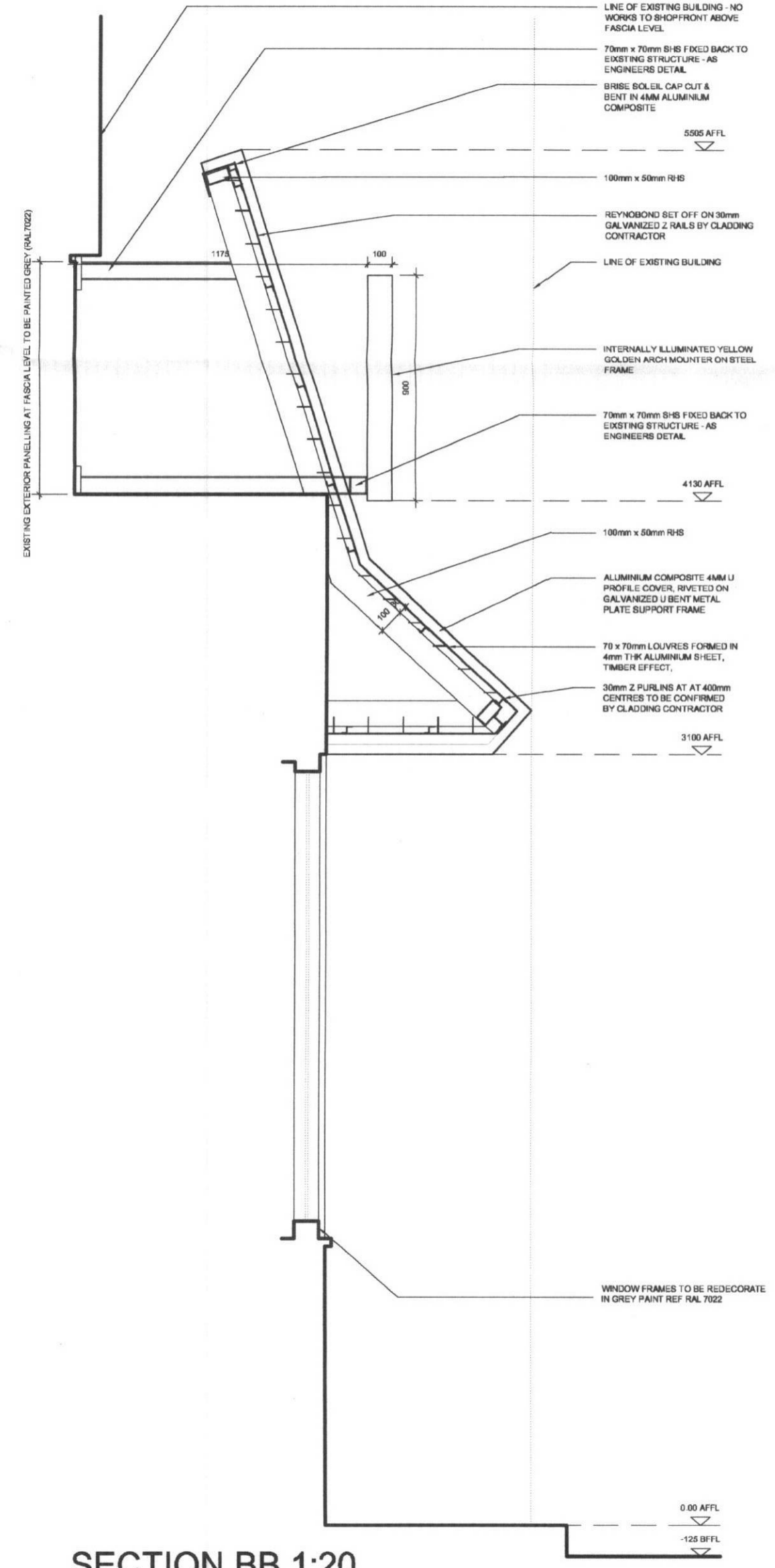
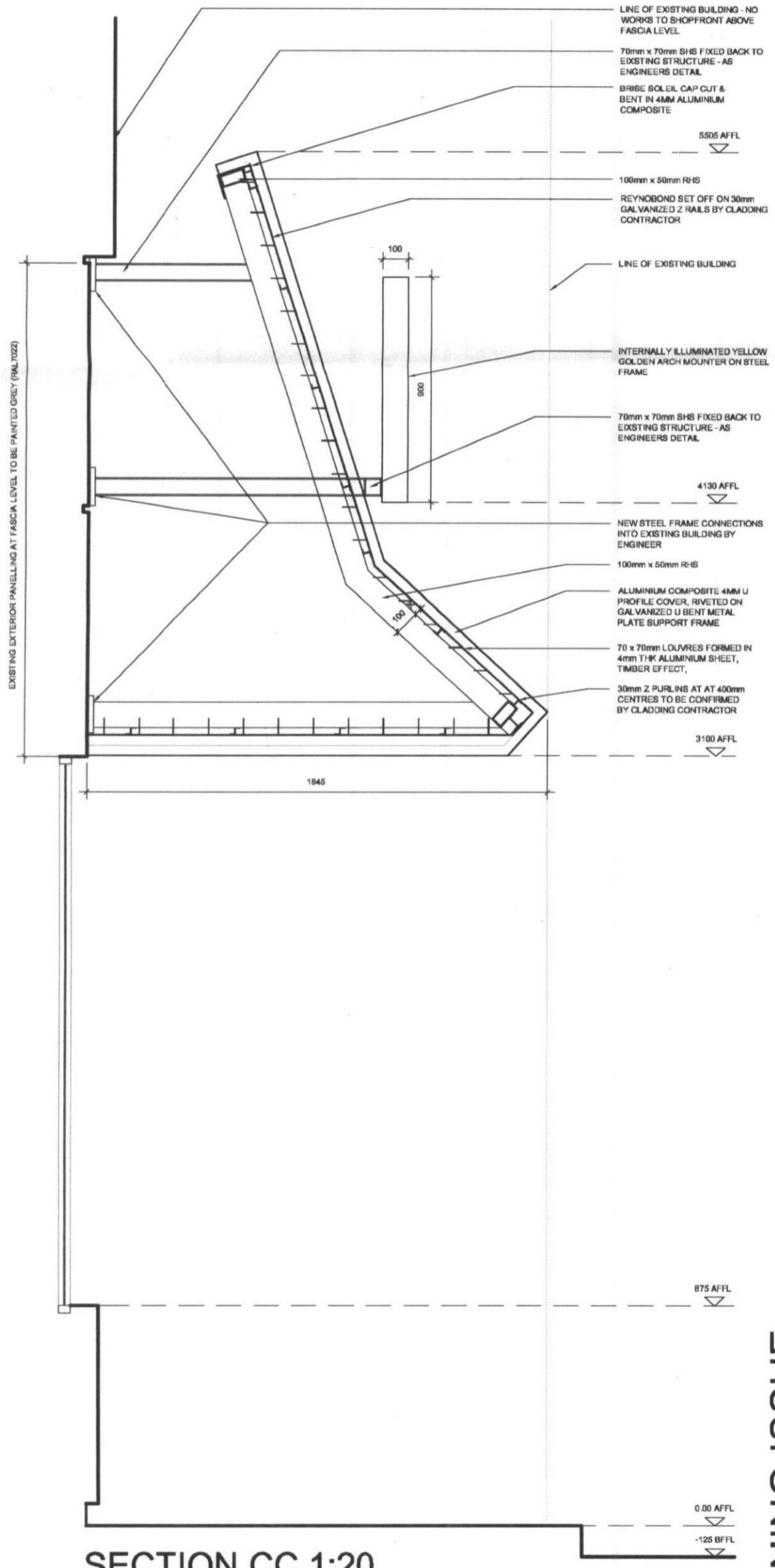


SECTION AA 1:20



SECTION BB 1:20



SECTION CC 1:20

WELWYN HATFIELD
 PLANNING
 OFFICE COPY
 20 MAY 2009
 No. SP/2009/1061/A

PLANNING ISSUE

GENERAL NOTES:
 All works are to be undertaken in accordance with the Building Regulations and the latest British Standards.
 All proprietary materials and products are to be used clearly in accordance with the manufacturers recommendations.
 All dimensions to be checked on site prior to construction.

PROPOSED DEVELOPMENT AT: 88 The Galleria Hatfield

STORE No: 0423

ON BEHALF OF: McDonald's Restaurants Ltd

DRAWING TITLE: Proposed Shopfront Sections

OWNED BY: JLS
 CHECKED BY: AC
 SCALE & DATE: 1:20 @ A2 14.05.09
 DRAWING No.: 4044_04
 REV No.: