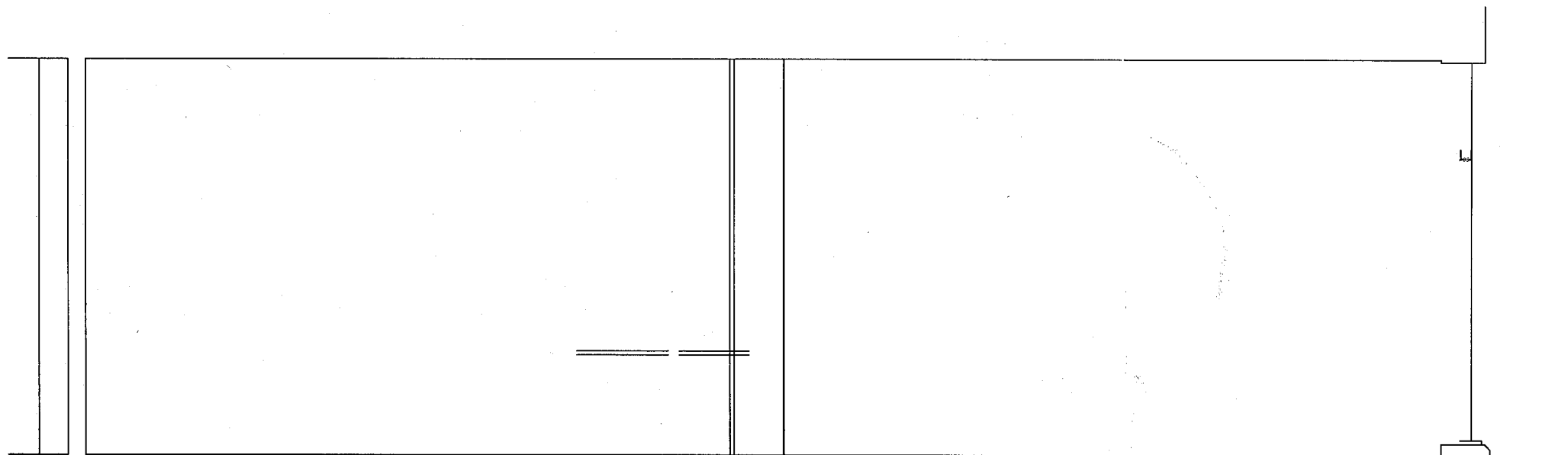
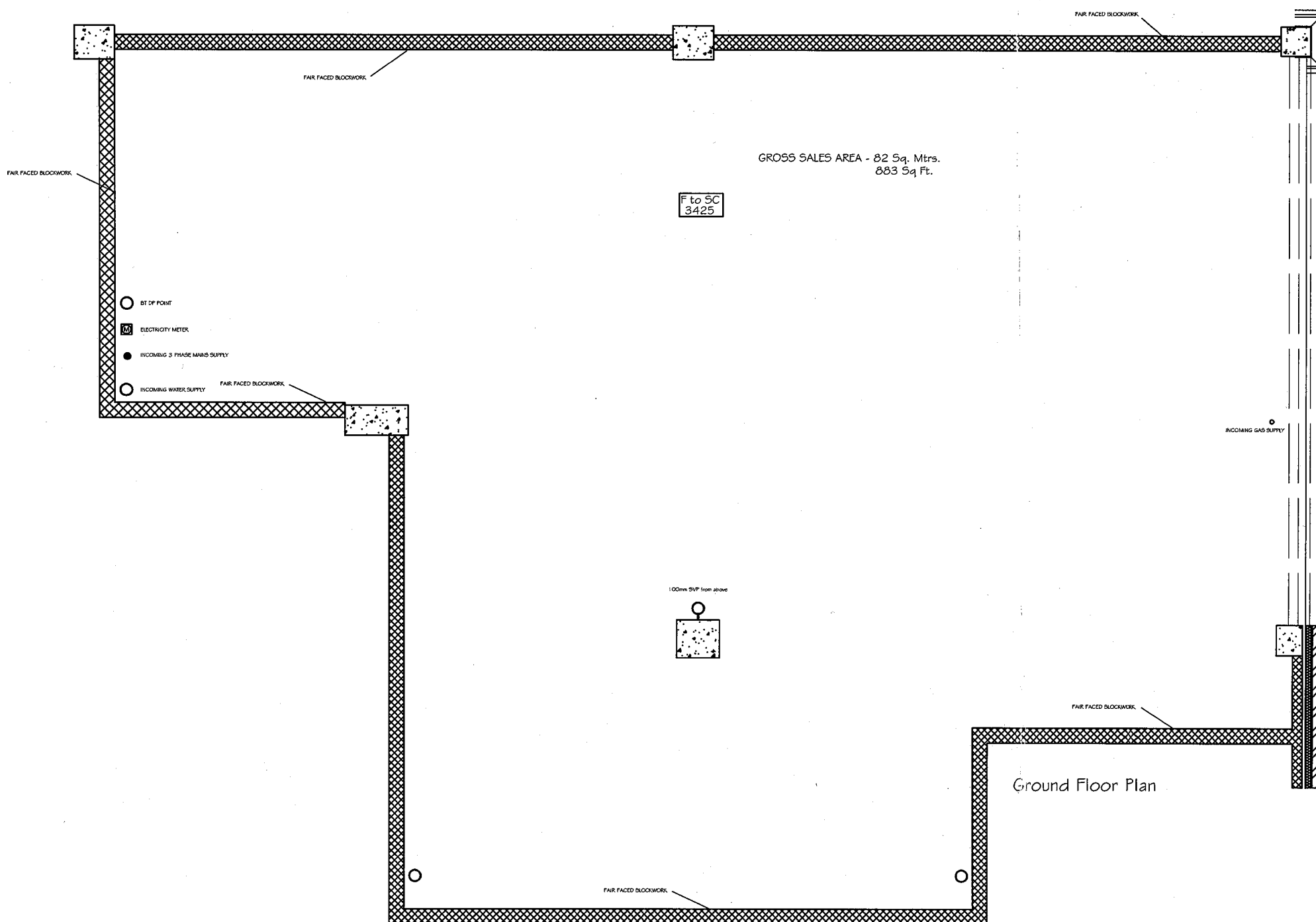


issued on the condition that it is not copied or disclosed by, or to, any unauthorised persons without prior consent in writing from IPS.
 All dimensions to be checked on site prior to any fabrication.
 All errors, omissions/discovered inconsistencies to be reported to the C.A immediately.
 Drawings show design intent only.
 DO NOT SCALE DRAWING



Ground Floor Plan



WELWYN HATFIELD
 PLANNING
 OFFICE COPY
 11 JAN 2008
 No: SB/2008/169/FP

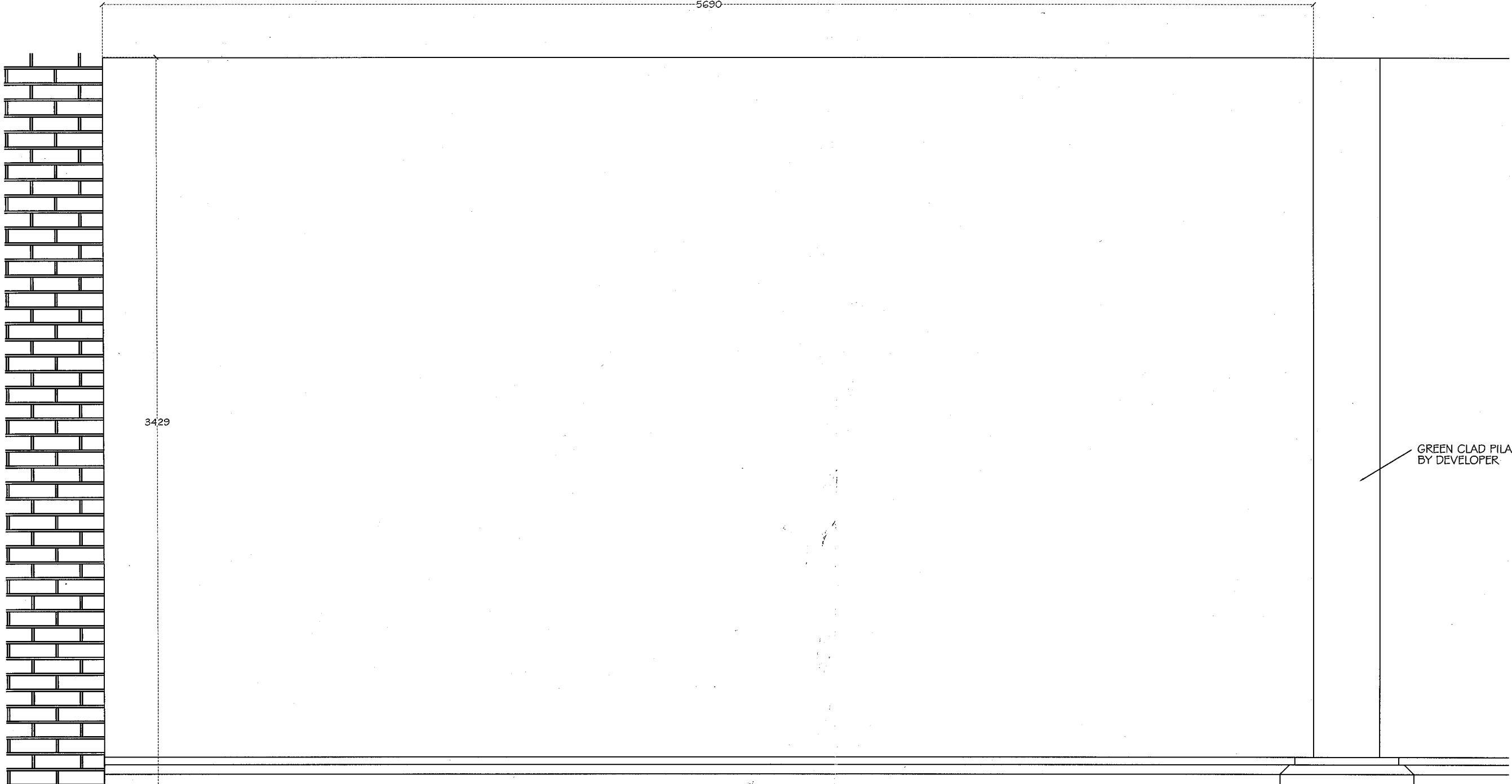
IPS

INTERIOR PROJECT SERVICES

55 Meadoway
 Steeple Claydon, Bucks. MK18 2PA
 Tel: 01296 730984. Fax: 01296 738606
 email: gordon@interiorps.co.uk

client	MAIL BOXES ETC
project	9 Parkhouse Court HATFIELD HERTFORDSHIRE AL10 9RQ
drawing	GROUND FLOOR PLAN AS EXISTING
scale	1:50@A3
date	NOV 07
drawn	GOR
number	WD/1050/01
revision	

issued on the condition that it is not copied or disclosed by, or to, any unauthorised persons without prior consent in writing from IPS.
All dimensions to be checked on site prior to any fabrication.
All errors, omissions/discovered inconsistencies to be reported to the C.A immediately.
Drawings show design intent only.
DO NOT SCALE DRAWING



Shopfront Elevation - Existing

IPS

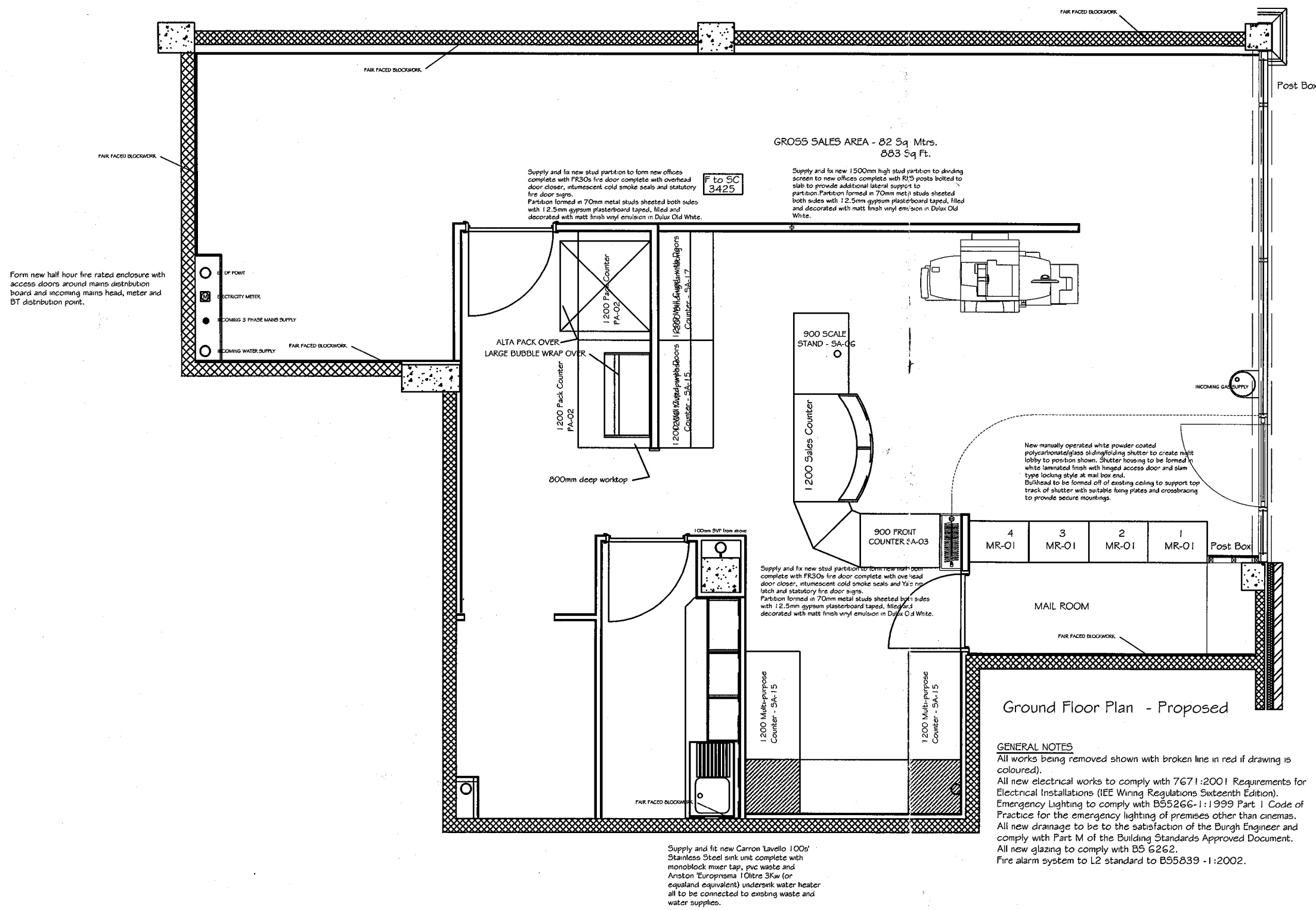
INTERIOR PROJECT SERVICES
55 Meadoway
Steeple Claydon, Bucks. MK18 2PA
Tel: 01296 730984. Fax: 01296 738606
email: gordon@interiops.co.uk

WELWYN HATFIELD
PLANNING
OFFICE COPY
11 JAN 2008
No: *SG/2008/169/17*

client	MAIL BOXES ETC
project	9 Parkhouse Court HATFIELD HERTFORDSHIRE AL10 9RQ
drawing	SHOPFRONT ELEVATION AS EXISTING
scale	1:20@A3
date	DEC 07
drawn	GOR
number	WD/1050/02
revision	

issued on the condition that it is not copied or disclosed by, or to, any unauthorised persons without prior consent in writing from IPS.
All dimensions to be checked on site prior to any fabrication.
All errors, omissions/discovered inconsistencies to be reported to the C.A. immediately.
Drawings show design intent only.
DO NOT SCALE DRAWING

Ground Floor Plan - Proposed



Ground Floor Plan - Proposed

GENERAL NOTES
All works being removed shown with broken line in red if drawing is coloured.
All new electrical works to comply with 7671:2001 Requirements for Electrical Installations (IEE Wiring Regulations Sixteenth Edition).
Emergency Lighting to comply with BS5266-1:1999 Part 1 Code of Practice for the emergency lighting of premises other than cinemas.
All new drainage to be to the satisfaction of the Borough Engineer and comply with Part M of the Building Standards Approved Document.
All new glazing to comply with BS 6262.
Fire alarm system to L2 standard to BS5839 -1:2002.

WELWYN HATFIELD
PLANNING
OFFICE COPY
11 JAN 2008
No. 56/2008/169/KW

IPS

INTERIOR PROJECT SERVICES
55 Meadoway
Steeple Claydon, Bucks. MK18 2PA
Tel: 01296 730984. Fax: 01296 738606
email: gordon@interiops.co.uk

client
MAIL BOXES ETC

project
9 Parkhouse Court
HATFIELD
HERTFORDSHIRE AL10 9RQ

drawing
GROUND FLOOR PLAN
AS PROPOSED

scale
1:50@A3

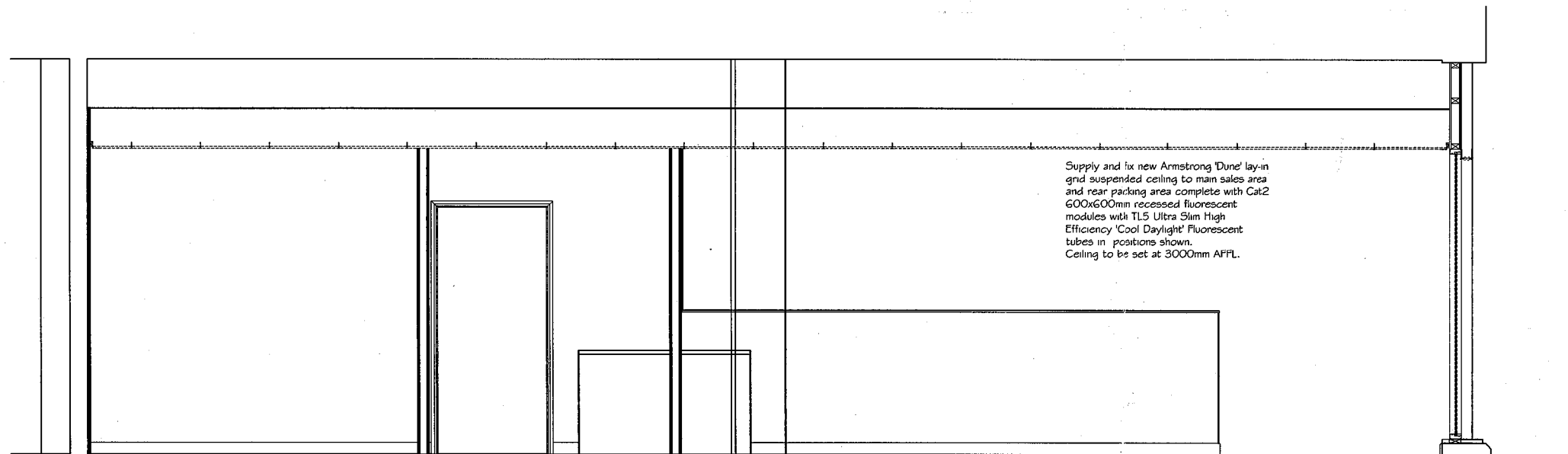
date
NOV 07

drawn
GOR

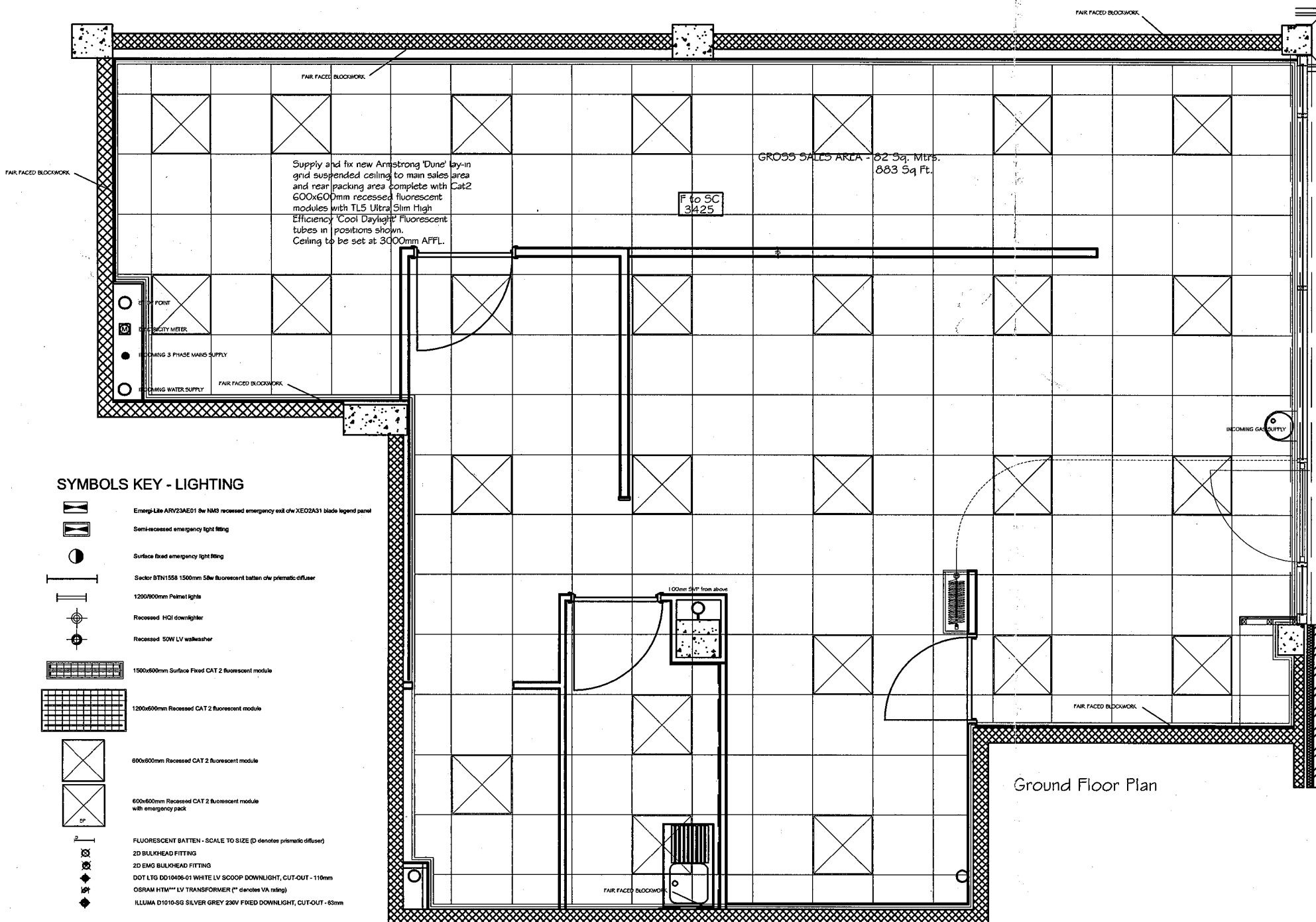
number
WD/1050/03

revision

issued on the condition that it is not copied or disclosed by, or to, any unauthorised persons without prior consent in writing from IPS.
 All dimensions to be checked on site prior to any fabrication.
 All errors, omissions/discovered inconsistencies to be reported to the C.A immediately.
 Drawings show design intent only.
 DO NOT SCALE DRAWING



Ground Floor Plan



Ground Floor Plan

SYMBOLS KEY - LIGHTING

- Emergency exit light ARV23AE01 for HMO recessed emergency exit or XEOD31 blade legend panel
- Semi-recessed emergency light fitting
- Surface fixed emergency light fitting
- Sucker BTN1558 1500mm 58w fluorescent batten with prismatic diffuser
- 1200x900mm Panel lights
- Recessed HQI downlighter
- Recessed 50W LV walkwasher
- 1500x600mm Surface Fixed CAT 2 fluorescent module
- 1200x600mm Recessed CAT 2 fluorescent module
- 600x600mm Recessed CAT 2 fluorescent module
- 600x600mm Recessed CAT 2 fluorescent module with emergency pack
- FLUORESCENT BATTEN - SCALE TO SIZE (D denotes prismatic diffuser)
- 2D BULKHEAD FITTING
- 2D EMG BULKHEAD FITTING
- DOT LTG DD10406-01 WHITE LV SCOOP DOWNLIGHT, CUT-OUT - 110mm
- OSRAM HTM LV TRANSFORMER (denotes VA rating)
- ILLUMA D1010-SG SILVER GREY 230V FIXED DOWNLIGHT, CUT-OUT - 65mm

WELWYN HATFIELD
 PLANNING
 OFFICE COPY
 11 JAN 2008
 No: 86/2008/169/FP

IPS

INTERIOR PROJECT SERVICES
 55 Meadoway
 Steeple Claydon, Bucks, MK18 2PA
 Tel: 01296 730984, Fax: 01296 738606
 email: gordon@interiops.co.uk

client
 MAIL BOXES ETC

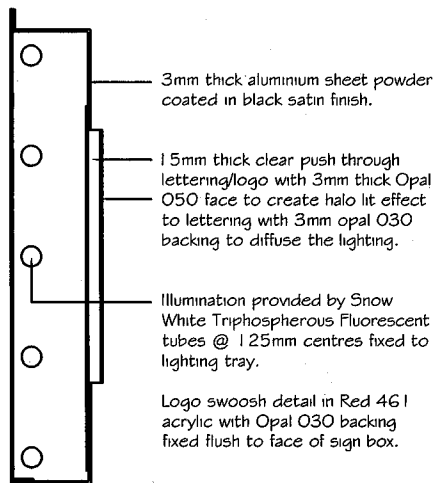
project
 9 Parkhouse Court
 HATFIELD
 HERTFORDSHIRE AL10 9RQ

drawing
 REFLECTED CEILING PLAN
 AS PROPOSED

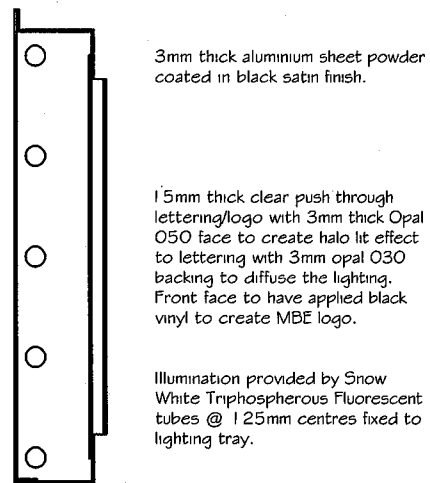
scale 1:50@A3 date DEC 07 drawn GOR

number revision
 WD/1050/04

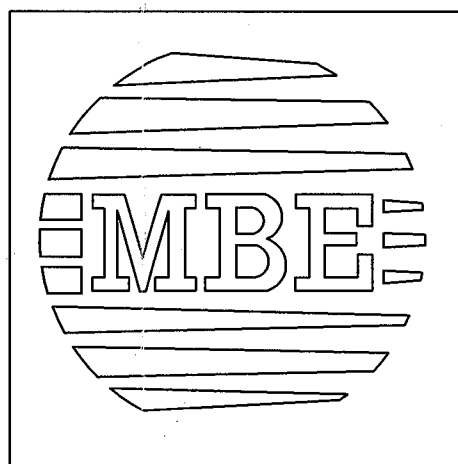
issued on the condition that it is not copied or disclosed by, or to, any unauthorised persons without prior consent in writing from IPS.
 All dimensions to be checked on site prior to any fabrication.
 All errors, omissions/discovered inconsistencies to be reported to the C.A immediately.
 Drawings show design intent only.
 DO NOT SCALE DRAWING



Section Through Lettering



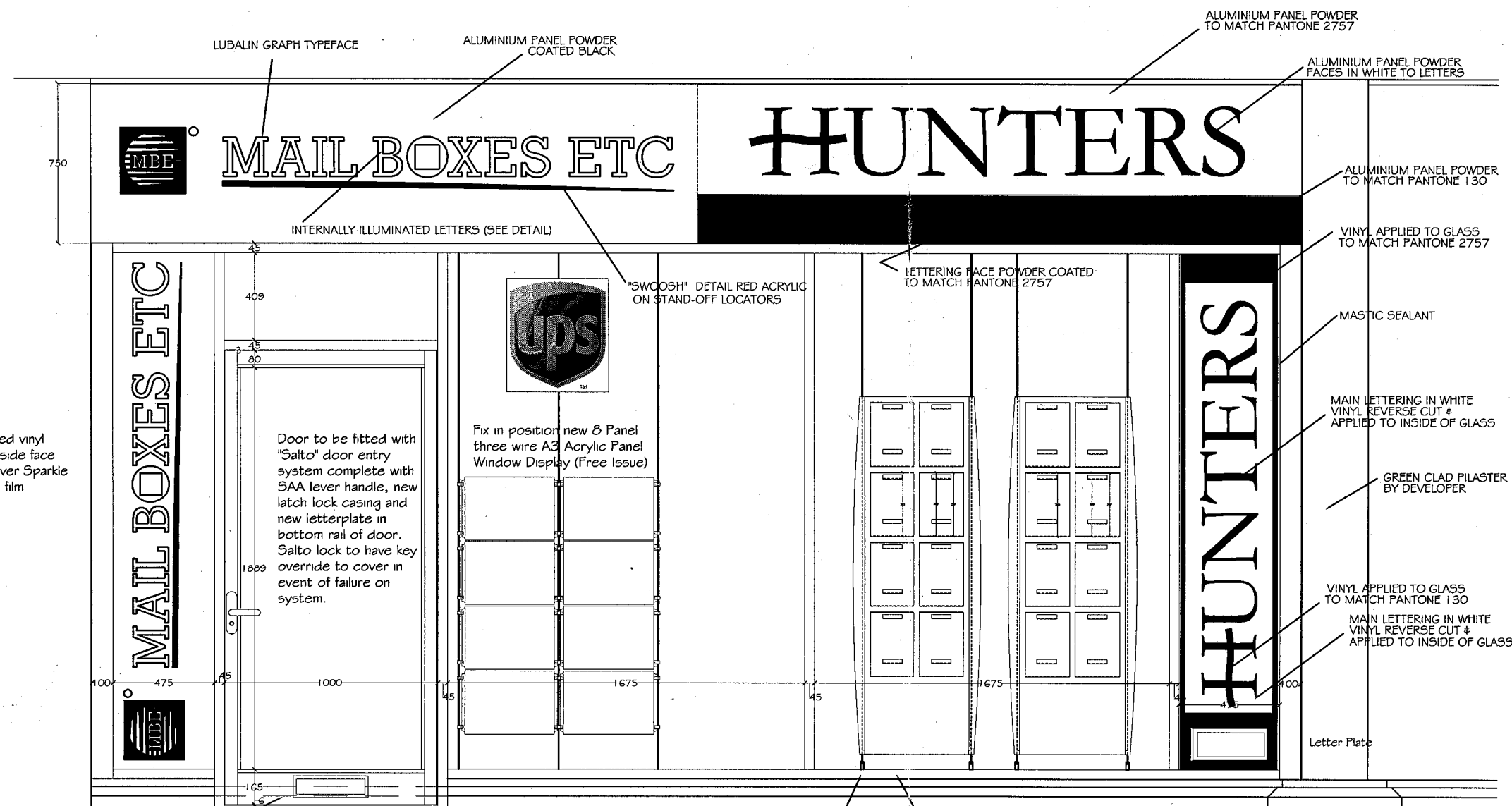
Section Through Logo



Elevation of Logo

Internally illuminated logo constructed from Opal acrylic overlaid with 3M Scotchal Translucent Film Series 3630 MBE Black applied to create logo over white acrylic block pushed through panel by 20mm as lettering on main fascia.

CONSTRUCTION DETAIL (Not to Scale)



Shopfront Elevation - Proposed

Cut back existing brick plinth to form new opening for shopfront entrance door with mitre brick fitted at opening to trim into new sashwork. Make good to DPM as required. New shopfront door to be fitted with mill finish aluminium threshold, letterplate, Dorma (or equivalent) overhead door closer with non-hold back facility and new Salto door entry system reference

New aluminium framed shopfront formed with 100x100mm & 100x45mm extruded sections all to be powder coated to match RAL 7015. Main sashwork to be glazed with a minimum of 10.8mm laminated safety glass all to BS6262 with door glazed with 8.4mm laminated safety glass all marked with a BS kite mark.

New shopfront to be fixed onto tanalised timber grounds with cill pressing over to match RAL 7015. Head of shopfront to be secured to tanalised softwood framework sheeted with 18mm thick exterior grade plywood for fixing of new fascia signage.

WELWYN HATFIELD
 PLANNING
 OFFICE COPY
 11 JAN 2008
 No: 56/2008/69/10

IPS

INTERIOR PROJECT SERVICES
 55 Meadoway
 Steeple Claydon, Bucks, MK18 2PA
 Tel: 01296 730984, Fax: 01296 738606
 email: gordon@interiops.co.uk

client
 MAIL BOXES ETC

project
 9 Parkhouse Court
 HATFIELD
 HERTFORDSHIRE AL10 9RQ

drawing
 SHOPFRONT ELEVATION
 AS PROPOSED

scale
 1:25@A3

date
 DEC 07

drawn
 GOR

number
 WD/1050/05

revision