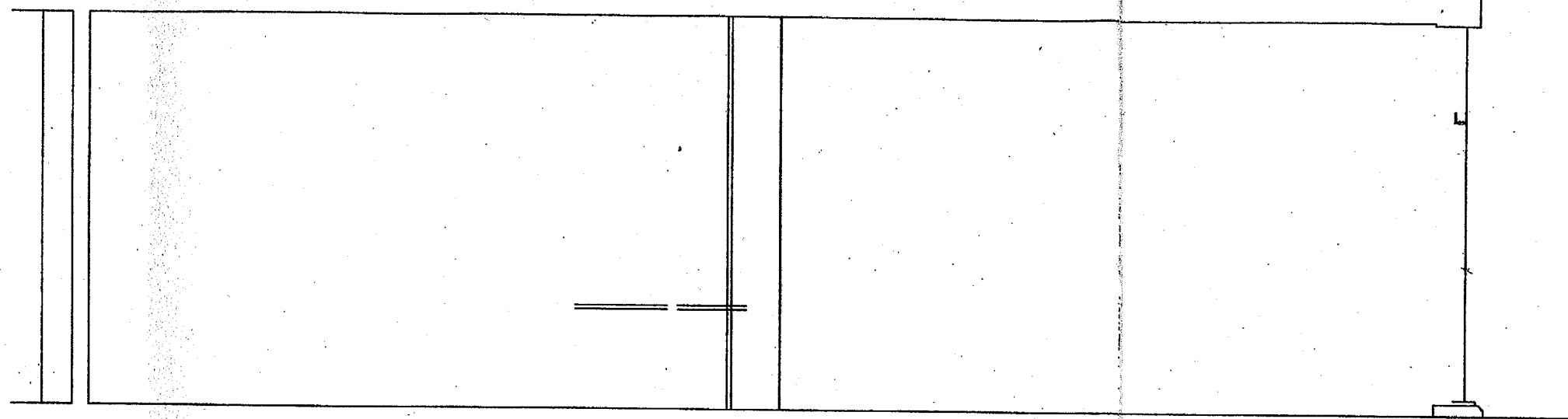
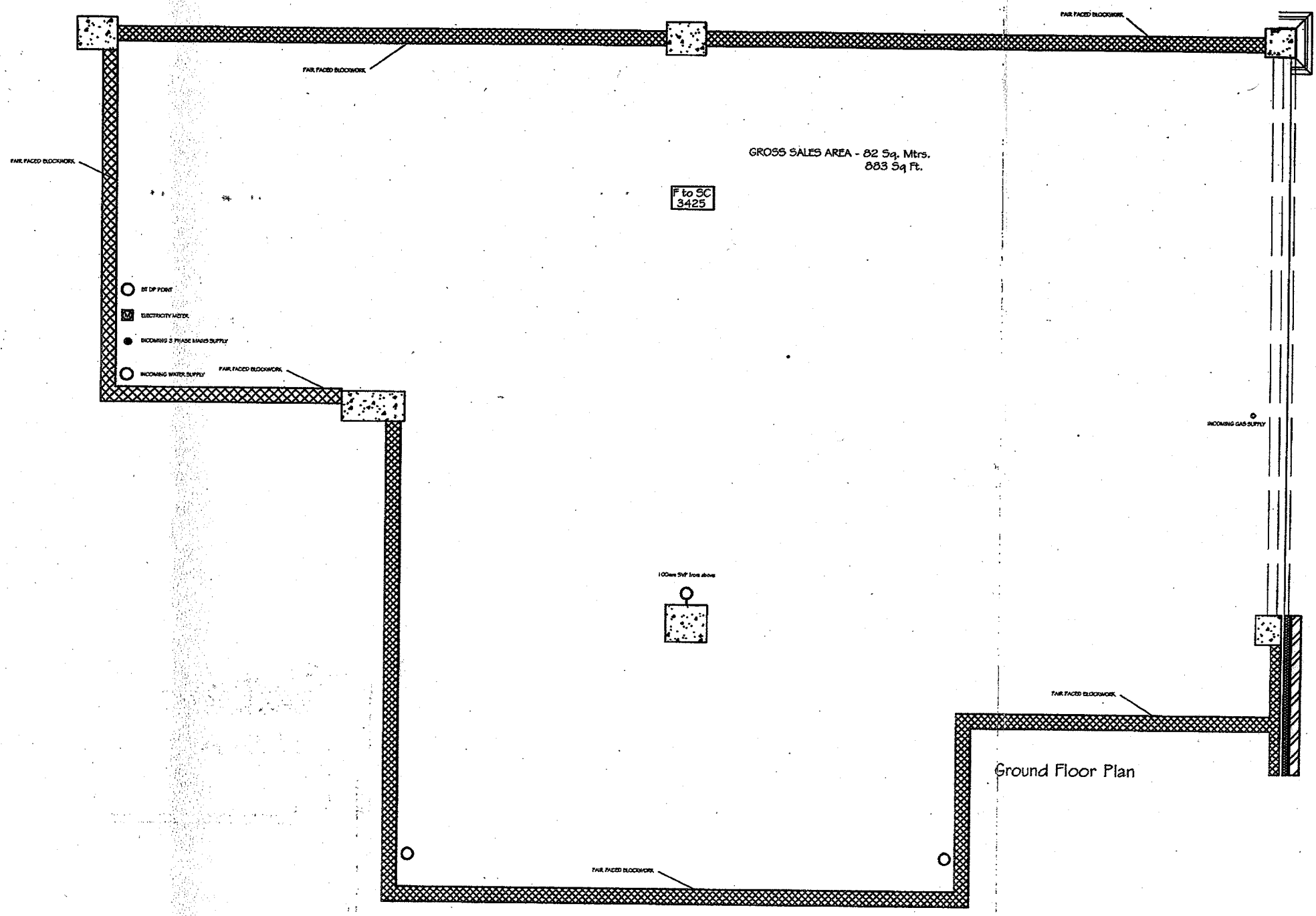


issued on the condition that it is not copied or disclosed by, or to, any unauthorised persons without prior consent in writing from IPS.
 All dimensions to be checked on site prior to any fabrication.
 All errors, omissions/discovered inconsistencies to be reported to the CA immediately.
 Drawings show design intent only.
DO NOT SCALE DRAWING



Ground Floor Plan



PLANNING
 DEPARTMENT
 OFFICE COPY
 17 JUN 2008
 No: *SG/2008/932/AD*

~~WELWYN HATFIELD
 PLANNING
 OFFICE COPY
 11 JAN 2008
 No: *SG/2008/170/AD*~~

IPS

INTERIOR PROJECT SERVICES
 55 Meadoway
 Steeple Claydon, Bucks. MK18 2PA
 Tel: 01296 730984, Fax: 01296 738806
 email: gordon@interiops.co.uk

client
MAIL BOXES ETC

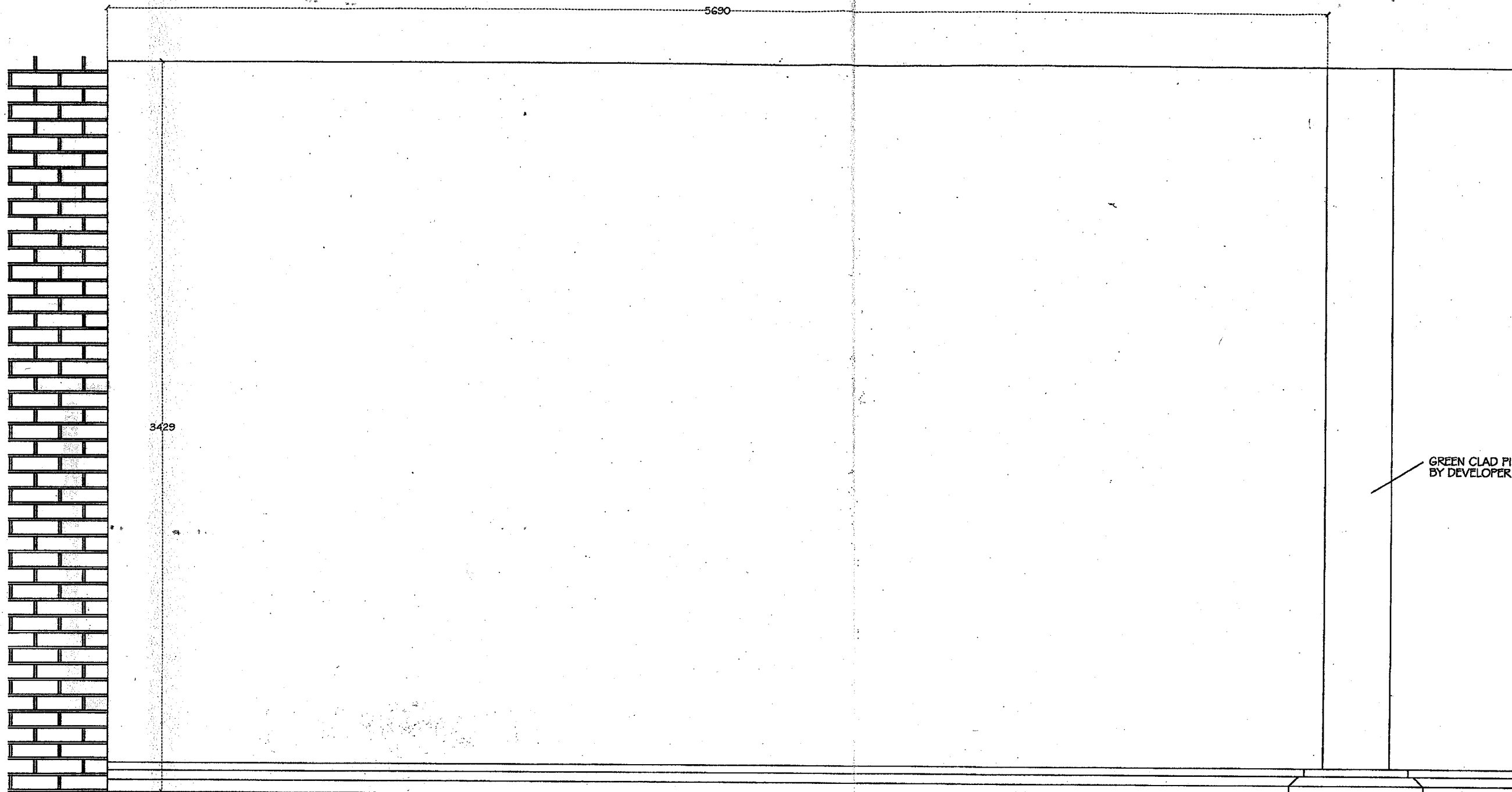
project
**9 Parkhouse Court
 HATFIELD
 HERTFORDSHIRE AL10 9RQ**

drawing
**GROUND FLOOR PLAN
 AS EXISTING**

scale
1:50@A3 date
NOV 07 drawn
GOR

number
WD/1050/01 revision

issued on the condition that it is not copied or disclosed by, or to, any unauthorised persons without prior consent in writing from IPS.
All dimensions to be checked on site prior to any fabrication.
All errors, omissions/discovered inconsistencies to be reported to the C.A. immediately.
Drawings show design intent only.
DO NOT SCALE DRAWING



Shopfront Elevation - Existing

PLANNING
DEPARTMENT
OFFICE COPY
17 JUN 2008
NO: 56/2008/932/AD

WELWYN HATFIELD
PLANNING
OFFICE COPY
11 JAN 2008
No: 56/2008/170/AD

IPS

INTERIOR PROJECT SERVICES
65 Meadoway,
Steeple Claydon, Bucks, MK18 2PA
Tel: 01298 730984, Fax: 01298 738606
email: gordon@interiorps.co.uk

client
MAIL BOXES ETC

project
9 Porkhouse Court
HATFIELD
HERTFORDSHIRE AL10 9RQ

drawing
SHOPFRONT ELEVATION
AS EXISTING

scale
1:20@A3

date
DEC 07

drawn
GOR

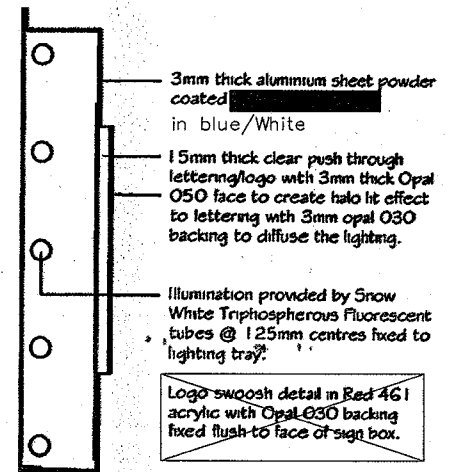
number
WD/1050/02

revision

15mm thick clear pushed through lettering and logo with 3mm thick white opal 050 face to create halo effect to lettering with 3mm opal 030 backing to diffuse the internal illumination. 2817

3mm thick aluminium sheet powder coated in mid blue/white satin finish. Illumination provided by Snow White Triphosphorous Fluorescent tubes @ 125mm centres fixed to lighting tray.

15mm thick clear pushed through lettering and logo with 3mm thick with dark grey face to create halo effect to lettering with 3mm opal 030 backing to diffuse the internal illumination.



Section Through Lettering
CONSTRUCTION DETAIL (Not to Scale)

Acrylic cable suspended display system within window.

Entrance doors positioned centrally in width of overall shopfront, doors sufficiently wide enough for wheelchair access.

Hairdressing product display system within window.

Shopfront framing system from silver powder coated aluminium with double glazed fixed windows and door panels, all fixed to existing brick and concrete plinth.

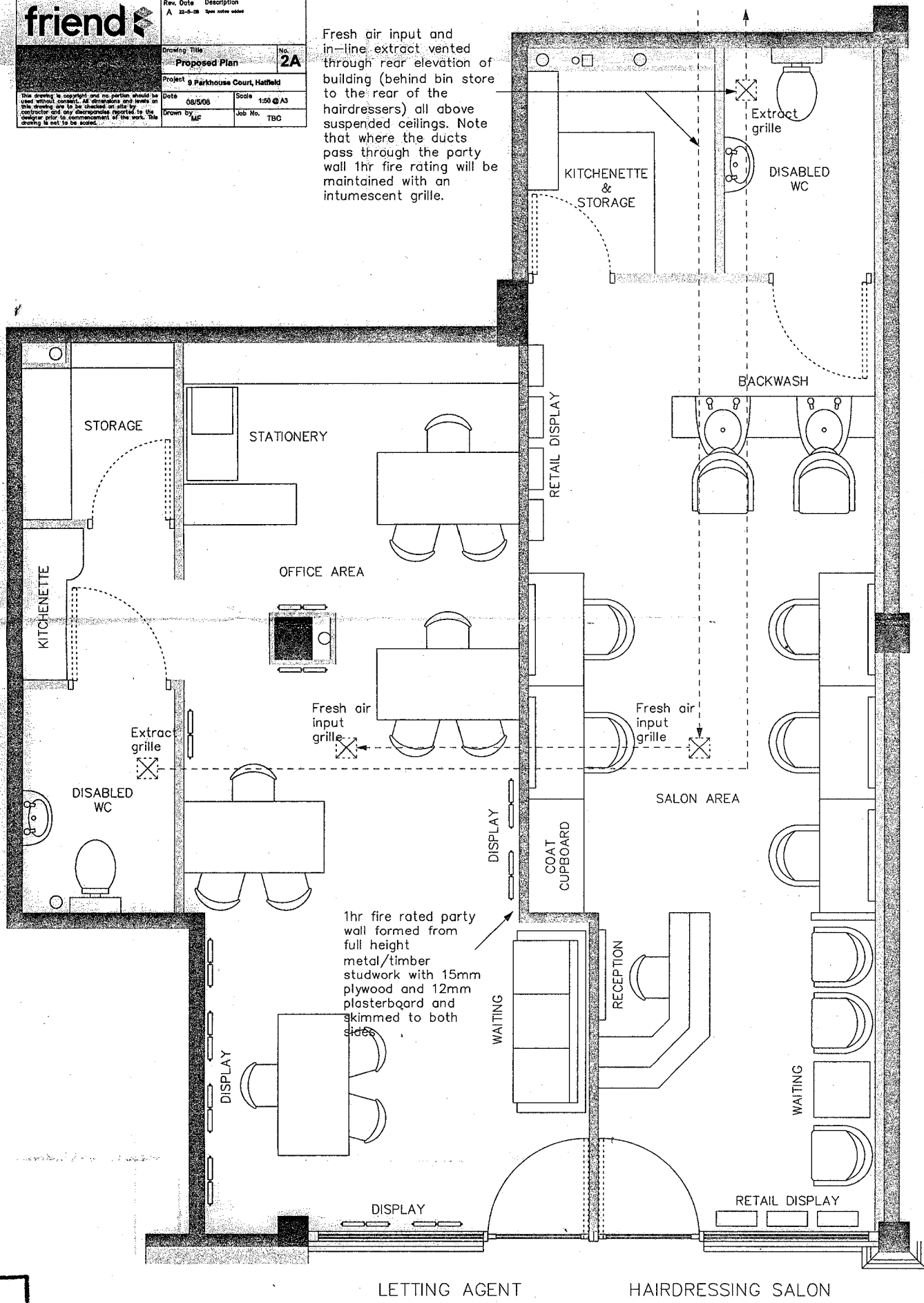
friend	Rev. Date Description	
	Drawing Title Proposed Shopfront	No. 1
	Project 9 Parkhouse Court, Hatfield	
This drawing is copyright and no portion should be used without consent. All dimensions and levels on this drawing are to be checked on site by contractor and any discrepancies reported to the designer prior to commencement of the work. This drawing is not to be scaled.	Date 08/5/08	Scale 1:25 @ A3
	Drawn by MF	Job No. TBC

New electrically operated anodised tube and straight link roller shutter to windows. 220mm x 70mm straight link pattern constructed from 12mm dia tubes on steel rods interlinked by 15mm 3mm flat links. Shutter end plates to be above suspended ceiling with barrel mounted 220/240v single phase tubular motor in 100 or 125mm dia tube internally sprung to counterbalance shutter weight. Shutters to be independantly operated with a flush key switch mounted within each shop unit. Bottom rail to be 'L' shaped and to match tubes. Shutter guides in rolled steel channel section size to be determined by size of shutter or application in accordance with the manufacturers guidelines.

PLANNING DEPARTMENT OFFICE COPY
17 JUN 2008
NO: S6/2008/932/A0

friend	Rev. Date	Description
	A	22-4-08 2nd issue added
Drawing Title		No.
Proposed Plan		2A
Project 9 Parkhouse Court, Hatfield		
Date	08/5/08	Scale 1:50 @ A3
Drawn by	MF	Job No. TBC

Fresh air input and in-line extract vented through rear elevation of building (behind bin store to the rear of the hairdressers) all above suspended ceilings. Note that where the ducts pass through the party wall 1hr fire rating will be maintained with an intumescent grille.



PLANNING
 DEPARTMENT
 17 JUN 2008
 NO. S. 1058/932/AD