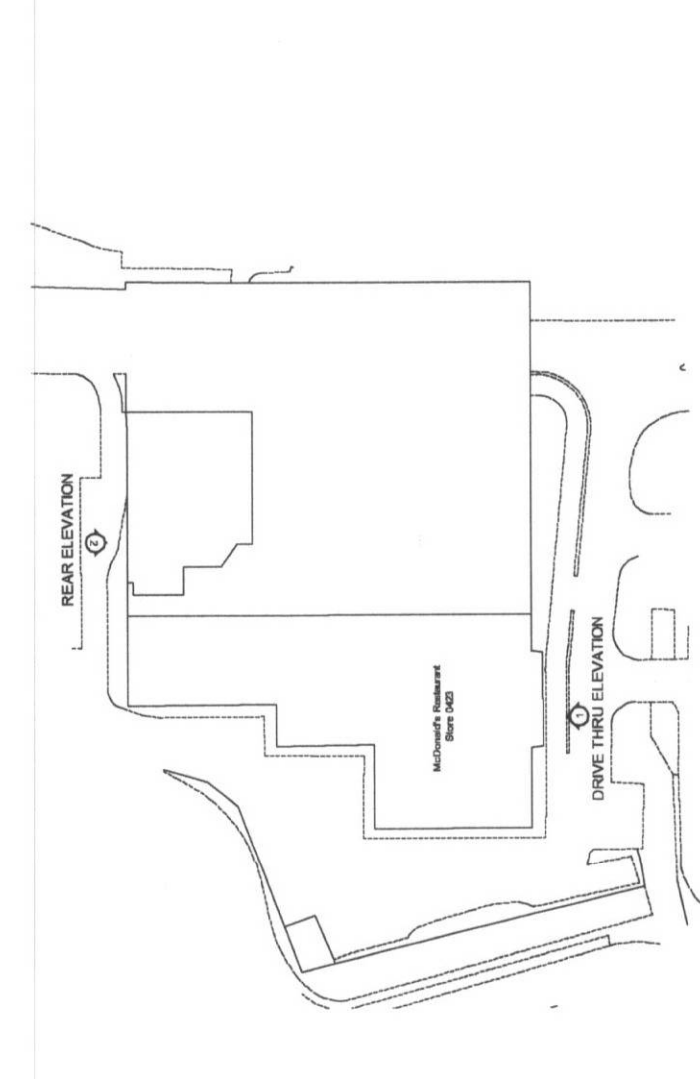
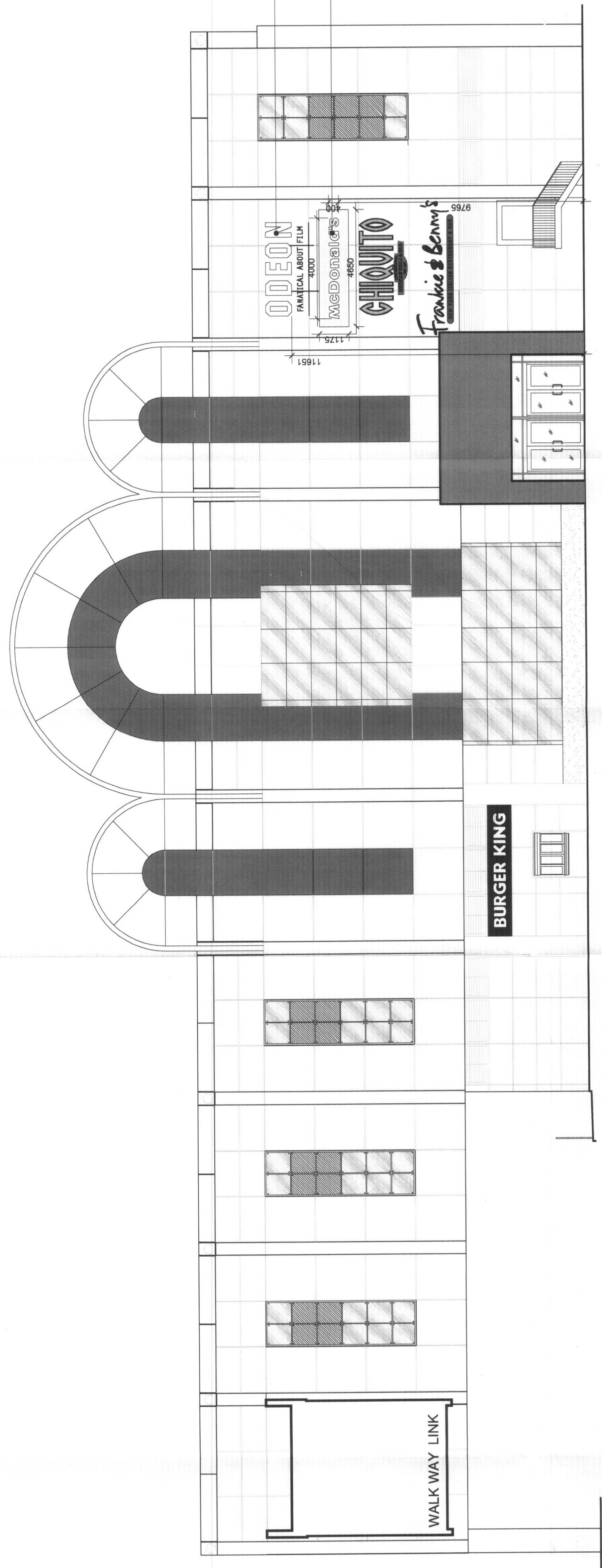


- NOTES**
1. All dimensions to be checked on site prior to commencement on site. Any discrepancies to be reported to McDonald's PM.
 2. All existing signage to be removed and discarded as McDonald's PM instruction. Any fixing holes, electrical cable penetrations etc to be made good, finish with surrounding finishes.
 3. All surfaces to be re-sprayed to be first treated with suitable primers as agreed with the McDonald's PM, prior to receiving new paint finish.
 4. Material references:
 1. Grey Paint - RAL 7022
 2. White Acrylic
 3. Yellow Acrylic
 4. Golden with - Facos - Yellow Acrylic
 5. Golden with - Facos - White Acrylic
 6. Golden with - Facos - White Acrylic
 7. Golden with - Facos - White Acrylic
 8. Golden with - Facos - White Acrylic
 9. Golden with - Facos - White Acrylic
 10. Golden with - Facos - White Acrylic
 11. Golden with - Facos - White Acrylic
 12. Golden with - Facos - White Acrylic
 13. Golden with - Facos - White Acrylic
 14. Golden with - Facos - White Acrylic
 15. Golden with - Facos - White Acrylic
 16. Golden with - Facos - White Acrylic
 17. Golden with - Facos - White Acrylic
 18. Golden with - Facos - White Acrylic
 19. Golden with - Facos - White Acrylic
 20. Golden with - Facos - White Acrylic
 21. Golden with - Facos - White Acrylic
 22. Golden with - Facos - White Acrylic
 23. Golden with - Facos - White Acrylic
 24. Golden with - Facos - White Acrylic
 25. Golden with - Facos - White Acrylic
 26. Golden with - Facos - White Acrylic
 27. Golden with - Facos - White Acrylic
 28. Golden with - Facos - White Acrylic
 29. Golden with - Facos - White Acrylic
 30. Golden with - Facos - White Acrylic
 31. Golden with - Facos - White Acrylic
 32. Golden with - Facos - White Acrylic
 33. Golden with - Facos - White Acrylic
 34. Golden with - Facos - White Acrylic
 35. Golden with - Facos - White Acrylic
 36. Golden with - Facos - White Acrylic
 37. Golden with - Facos - White Acrylic
 38. Golden with - Facos - White Acrylic
 39. Golden with - Facos - White Acrylic
 40. Golden with - Facos - White Acrylic
 41. Golden with - Facos - White Acrylic
 42. Golden with - Facos - White Acrylic
 43. Golden with - Facos - White Acrylic
 44. Golden with - Facos - White Acrylic
 45. Golden with - Facos - White Acrylic
 46. Golden with - Facos - White Acrylic
 47. Golden with - Facos - White Acrylic
 48. Golden with - Facos - White Acrylic
 49. Golden with - Facos - White Acrylic
 50. Golden with - Facos - White Acrylic
 51. Golden with - Facos - White Acrylic
 52. Golden with - Facos - White Acrylic
 53. Golden with - Facos - White Acrylic
 54. Golden with - Facos - White Acrylic
 55. Golden with - Facos - White Acrylic
 56. Golden with - Facos - White Acrylic
 57. Golden with - Facos - White Acrylic
 58. Golden with - Facos - White Acrylic
 59. Golden with - Facos - White Acrylic
 60. Golden with - Facos - White Acrylic
 61. Golden with - Facos - White Acrylic
 62. Golden with - Facos - White Acrylic
 63. Golden with - Facos - White Acrylic
 64. Golden with - Facos - White Acrylic
 65. Golden with - Facos - White Acrylic
 66. Golden with - Facos - White Acrylic
 67. Golden with - Facos - White Acrylic
 68. Golden with - Facos - White Acrylic
 69. Golden with - Facos - White Acrylic
 70. Golden with - Facos - White Acrylic
 71. Golden with - Facos - White Acrylic
 72. Golden with - Facos - White Acrylic
 73. Golden with - Facos - White Acrylic
 74. Golden with - Facos - White Acrylic
 75. Golden with - Facos - White Acrylic
 76. Golden with - Facos - White Acrylic
 77. Golden with - Facos - White Acrylic
 78. Golden with - Facos - White Acrylic
 79. Golden with - Facos - White Acrylic
 80. Golden with - Facos - White Acrylic
 81. Golden with - Facos - White Acrylic
 82. Golden with - Facos - White Acrylic
 83. Golden with - Facos - White Acrylic
 84. Golden with - Facos - White Acrylic
 85. Golden with - Facos - White Acrylic
 86. Golden with - Facos - White Acrylic
 87. Golden with - Facos - White Acrylic
 88. Golden with - Facos - White Acrylic
 89. Golden with - Facos - White Acrylic
 90. Golden with - Facos - White Acrylic
 91. Golden with - Facos - White Acrylic
 92. Golden with - Facos - White Acrylic
 93. Golden with - Facos - White Acrylic
 94. Golden with - Facos - White Acrylic
 95. Golden with - Facos - White Acrylic
 96. Golden with - Facos - White Acrylic
 97. Golden with - Facos - White Acrylic
 98. Golden with - Facos - White Acrylic
 99. Golden with - Facos - White Acrylic
 100. Golden with - Facos - White Acrylic
 5. All works to be undertaken within current Building Regulation ADocs, unless otherwise stated in an appropriate contract or project.

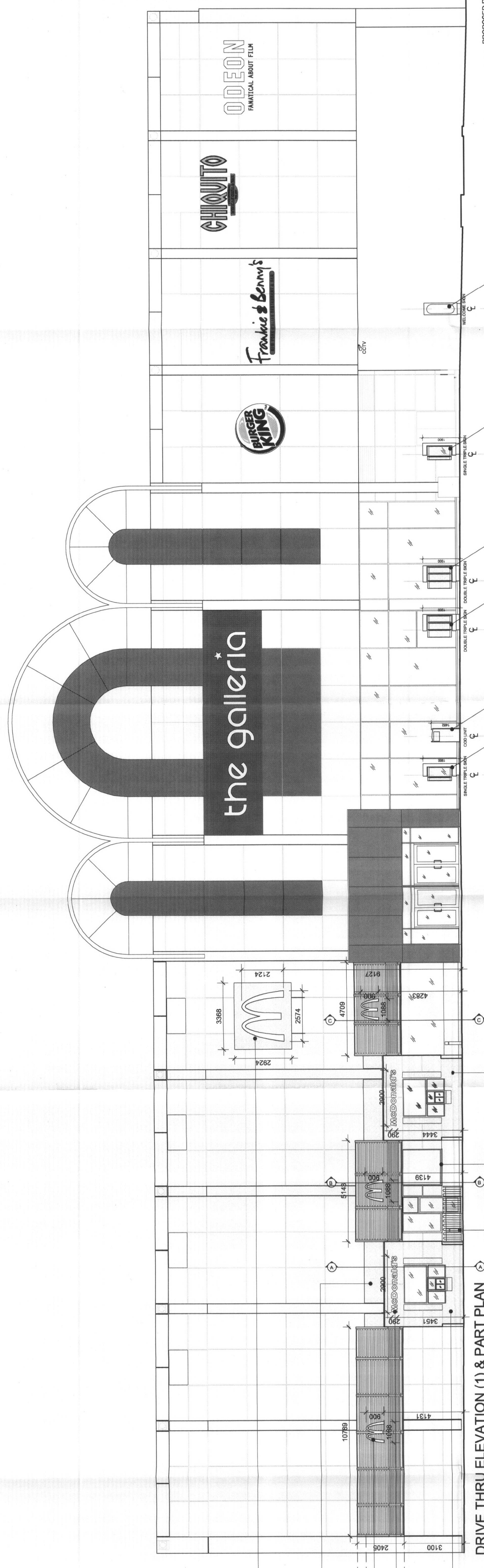


ELEVATION PLAN - NTS

EXISTING ODEON SIGN TO BE REPOSITIONED AS SHOWN
 PROPOSED 10MM THICK INTERNALLY ILLUMINATED GOLDEN ARCH SIGN ON A NON ILLUMINATED 20MM GREY ALU BACKING PANEL (RAL 7022)



REAR ELEVATION (2)



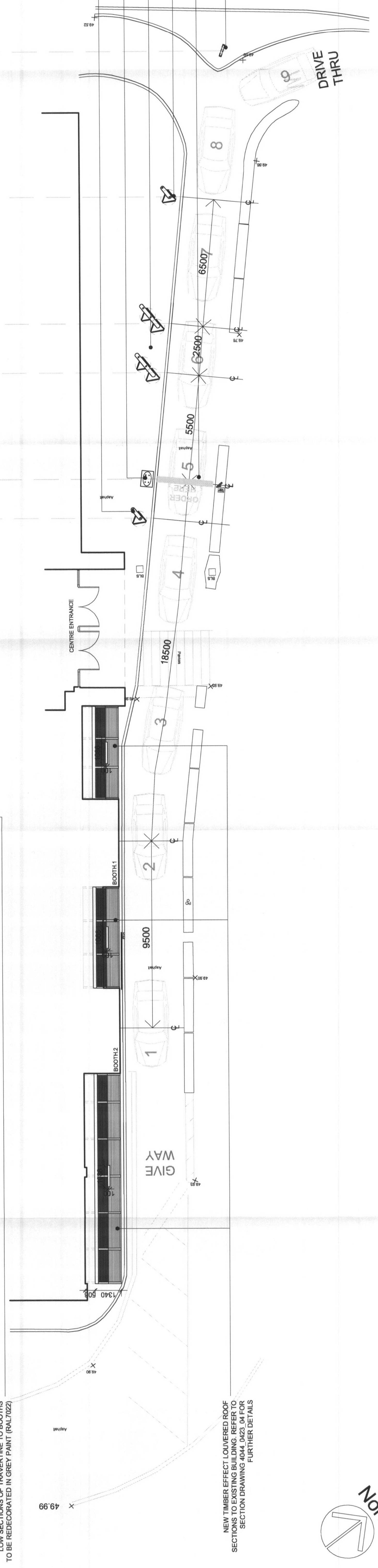
DRIVE THRU ELEVATION (1) & PART PLAN

- EXISTING INTERNALLY ILLUMINATED GOLDEN ARCH WITH NEW FLAT YELLOW ACRYLIC FACE ON NEW 20MM NON-ILLUMINATED GREY ALU BACKGROUND (RAL 7022)
- EXISTING EXTERIOR PANELING AT FASCIA LEVEL TO BE PAINTED GREY (RAL 7022). REFER TO SECTIONS DWG_3881-3911
- 2 NO. PROPOSED 10MM THICK ACRYLIC INTERNALLY ILLUMINATED GOLDEN ARCH SIGN ON TIMBER EFFECT LAMBERED DWG_3884 FOR FURTHER DETAILS
- 2 NO. PROPOSED 10MM THICK ACRYLIC INTERNALLY ILLUMINATED MCDONALD'S TEXT SIGN ON GREY (RAL 7022) BACKGROUND (RAL 7022)
- 2 NO. BOOTHS (EXTERNAL ENVELOPES & WINDOW FRAMES) GREY PAINT (RAL 7022)
- EXISTING METAL PROTECTIVE FENCE & BOLLARDS TO BE REDECORATED IN BLACK
- ALL EXISTING WINDOW FRAMES TO BE REDECORATED IN GREY PAINT (RAL 7022) & NEW OBSCURED DETAIL TO GLAZING
- LOW SECTIONS OF TRAVERTINE TO BOOTHS TO BE REDECORATED IN GREY PAINT (RAL 7022)

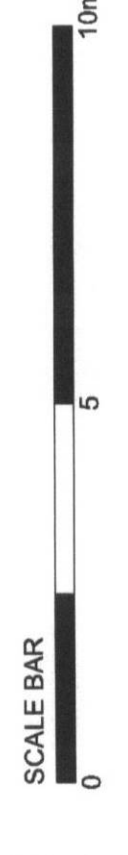
NEW TIMBER EFFECT LOUVERED ROOF SECTIONS TO EXISTING SIGNAGE TO BE REDECORATED IN GREY PAINT (RAL 7022) FOR FURTHER DETAILS

- PROPOSED SINGLE TYPABLE SIGN - REFER DATA SHEETS & DWG_404_05
- PROPOSED COOL UNIT - REFER DATA SHEETS & DWG_404_05
- PROPOSED 2 NO. DOUBLE TYPABLE SIGN - REFER DATA SHEETS & DWG_404_05
- PROPOSED SINGLE TYPABLE SIGN - REFER DATA SHEETS & DWG_404_05
- PROPOSED WOOD HERE IN YELLOW THERMOPLASTIC MATERIAL - REFER DATA SHEETS & DWG_404_05
- PROPOSED WELCOME SIGN - REFER DATA SHEETS & DWG_404_05

PROPOSED DRIVE THRU SIGNS - REFER DATA SHEETS & DWG_404_05



PROPOSED SHOPFRONT 1:50



ALL WORK TO BE COMPLETED BY 21 MAY 2008
 21 MAY 2008
 SSS/2007/1001/14

PLANNING ISSUE

McDonald's UK
 Planning Department
 100 Victoria Road
 London W12 0JF
 020 8734 2000

Project Name: McDonald's
 Project No: 1001-14
 Issue No: 1001-14-03
 Date: 21 May 2008

Author: [Name]
 Checker: [Name]
 Approver: [Name]