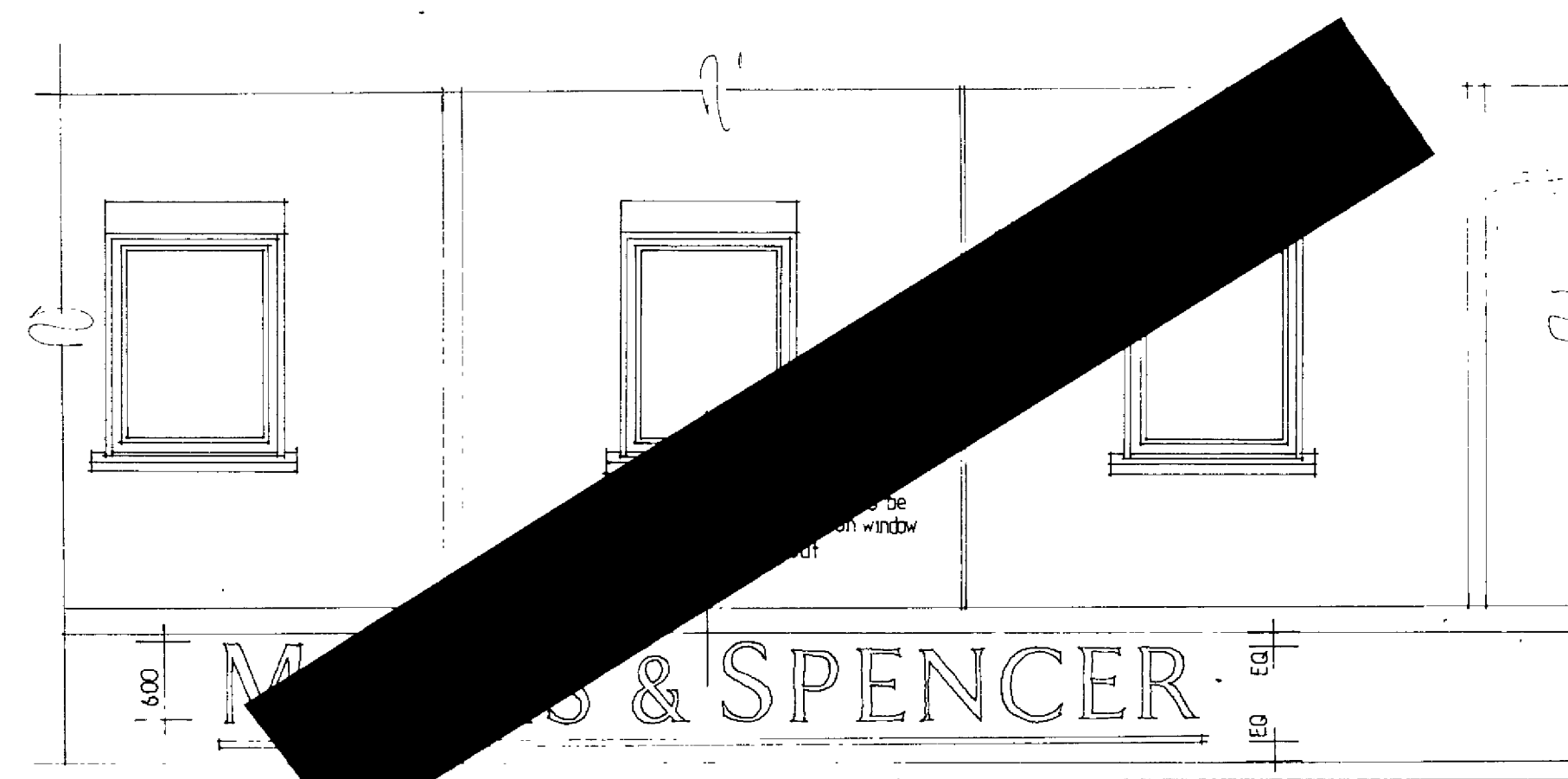
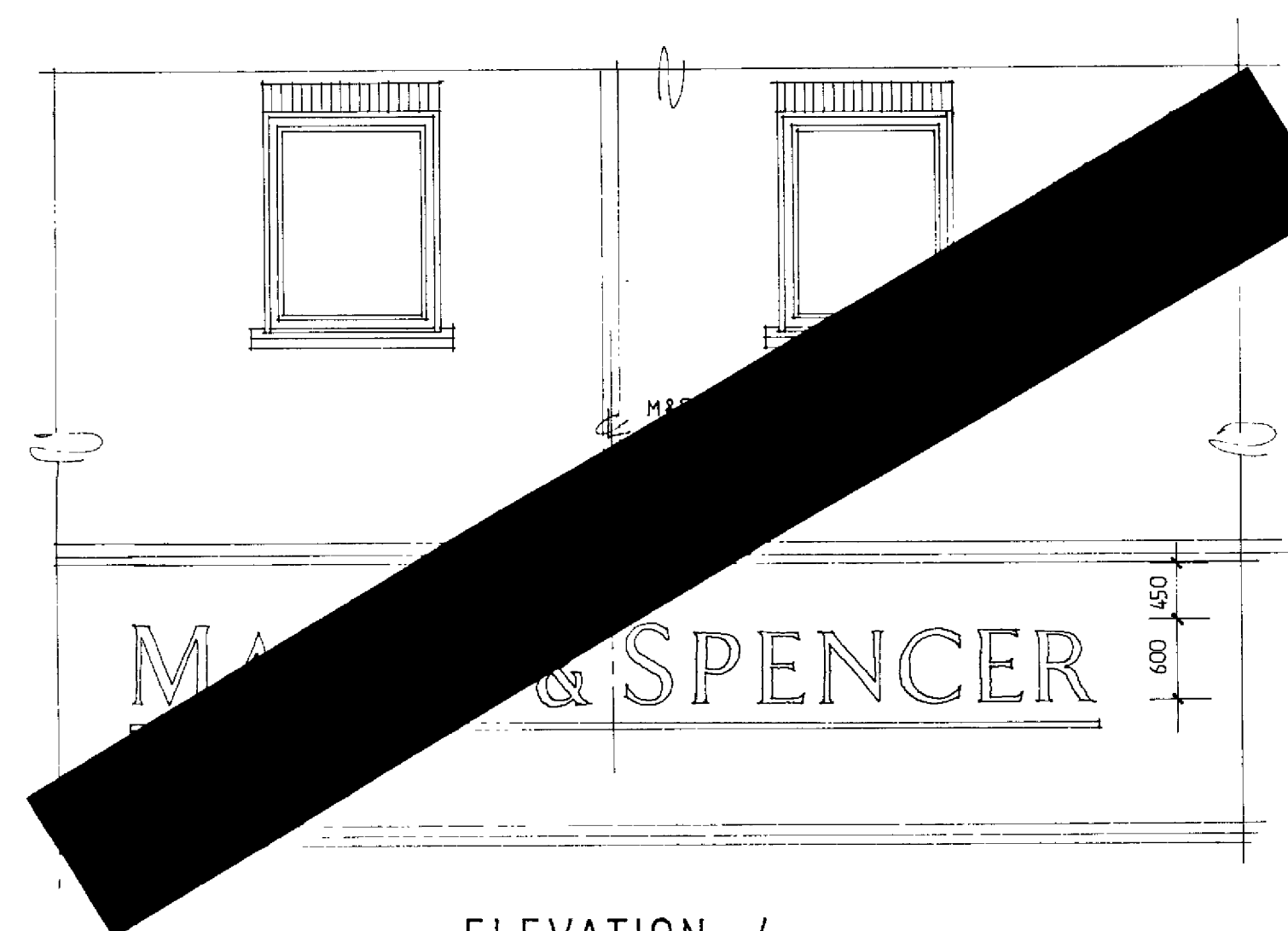


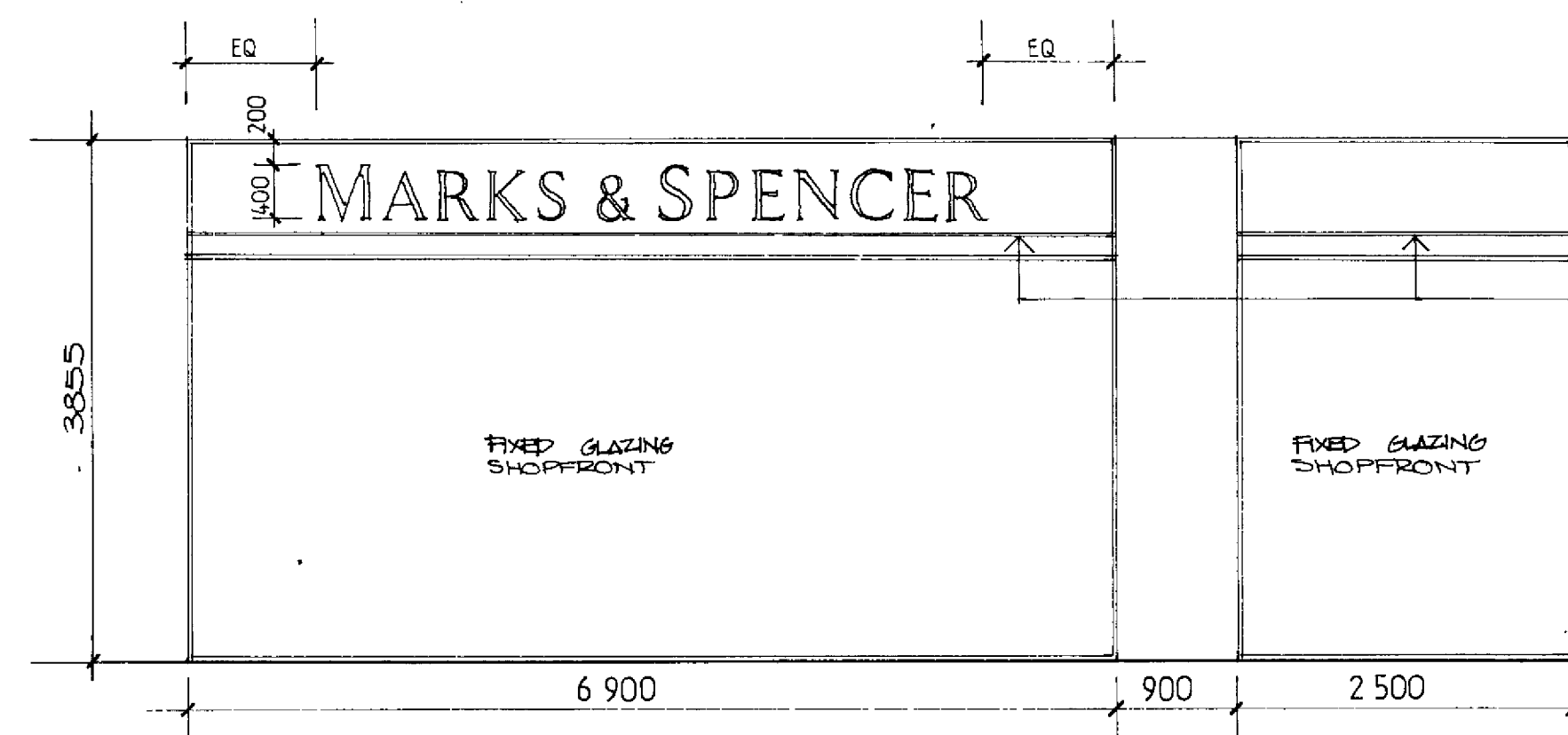
ELEVATION 1



OMIT ELEVATION N°



ELEVATION 4



ELEVATION 2

FIXED GLAZING SHOPFRONT
FIXED GLAZING SHOPFRONT

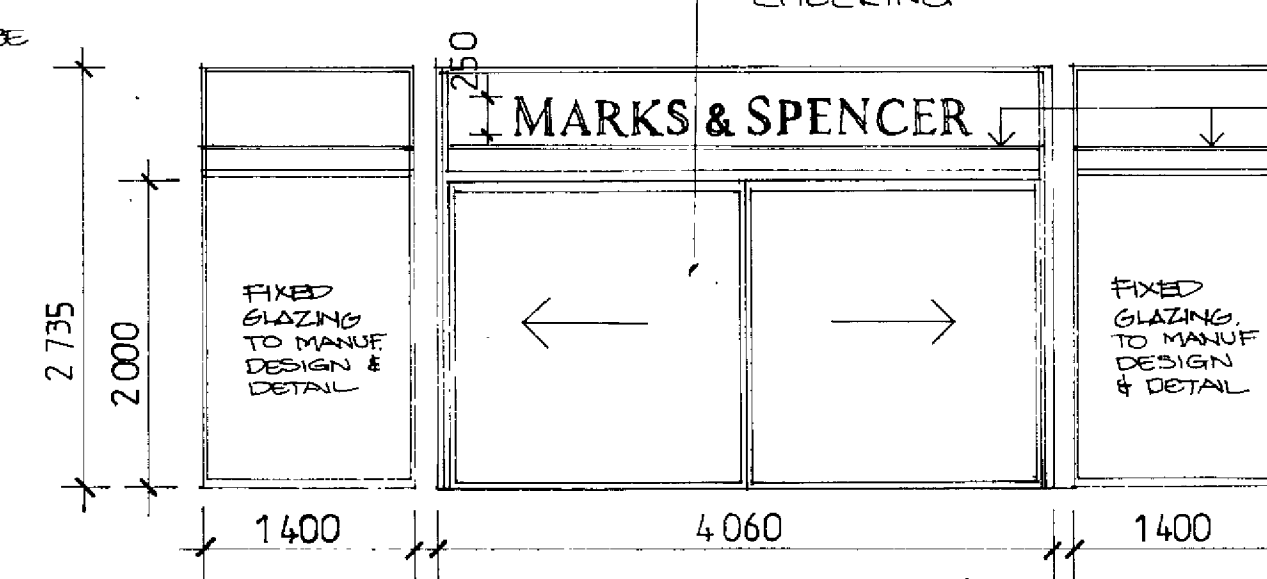
NOTE

ALL FINISHES OF SIGNS TO BE SPECIFICALLY TO MARKS & SPENCER SPECIFICATION.

GREEN GOLD CARVED TUBE TO CARRY RIGHT ACROSS SHOPFRONT GLAZING.

SHOPFRONT GLAZING AND FRAMING TO MANUFACTURERS DESIGN AND DETAIL. LAMINATED GLASS WITH CLEAR BANAFIX APPLIED TO INSIDE FACE. THICKNESS OF GLASS DEPENDANT UPON SIZE OF OPENING AND IS TO BE DETERMINED BY MANUFACTURER IN ACCORDANCE WITH THE RELEVANT CODES AND REGULATIONS. SHOP DRAWINGS ARE TO BE COMPLETE AND SUBMITTED FOR CHECKING COMPLETE WITH SIZE AND THICKNESS OF GLASS CLEARLY SHOWN FOR EACH SHOPFRONT - ALL PRIOR TO THE COMMENCEMENT OF WORK.

GLASS AUTOMATIC SLIDING DOORS TO 4000 WIDE OPENING TO MANUF DESIGN AND DETAIL. ALUM FRAME TO MATCH SHOPFRONT FRAMING. LIGHT SENSOR TO OUTSIDE AND PRESSURE SENSITIVE MAT TO MARKS & SPENCER SIDE. SHOP DRAWINGS TO BE SUBMITTED FOR CHECKING.



ELEVATION 3

Revisions

- 11.06.90 NOTES ADDED
- 31.5.90 ISSUE FOR CONSTRUCTION - SHOPFRONTS
- 29.08.90 ELEVATIONS 1&4 OMITTED
- 17.04.90 CONTRACT SET
- 16.4.90 ISSUE FOR CONSTRUCTION BUILDERS WORK
- 4.4.90 ISSUE FOR TENDER FINISHED PACKAGE
- C 28.3.90 ELEV 2 ALTERED
- 19.3.90 ISSUE FOR BILLING FINISHED PACKAGE
- 5.3.90 DRAWINGS ISSUED FOR SIGNAGE PACKAGE FOR TENDER
- 2.3.90 DRAWINGS ISSUED FOR SHOPFRONT PACKAGE FOR TENDER
- 1-3-90 SLIDING DOOR ADDED.
- 19.2.90 DRAWINGS ISSUED FOR SIGNAGE PACKAGE BILLING ONLY
- A.16.2.90 ELEVATION NOS OMITTED FROM SIGNAGE PACKAGE.
- 24.1.90 PLAN AND SIGNAGE SOLUTIONS

IMPORTANT NOTE

Where no dimensions are given drawings should not be scaled and the matter should be referred to Aukett Limited. Should dimensions or details on these drawings conflict precedence shall be given to larger scale drawings.

Where this drawing relates to existing buildings or completed construction the contractor shall check that there is no conflict between actual building dimensions and drawing dimensions. In the event of conflict between this drawing and subcontractor's working drawings for relevant building components then the subcontractor's drawing shall take precedence.

Such conflicts noted above shall be reported immediately to Aukett Limited.

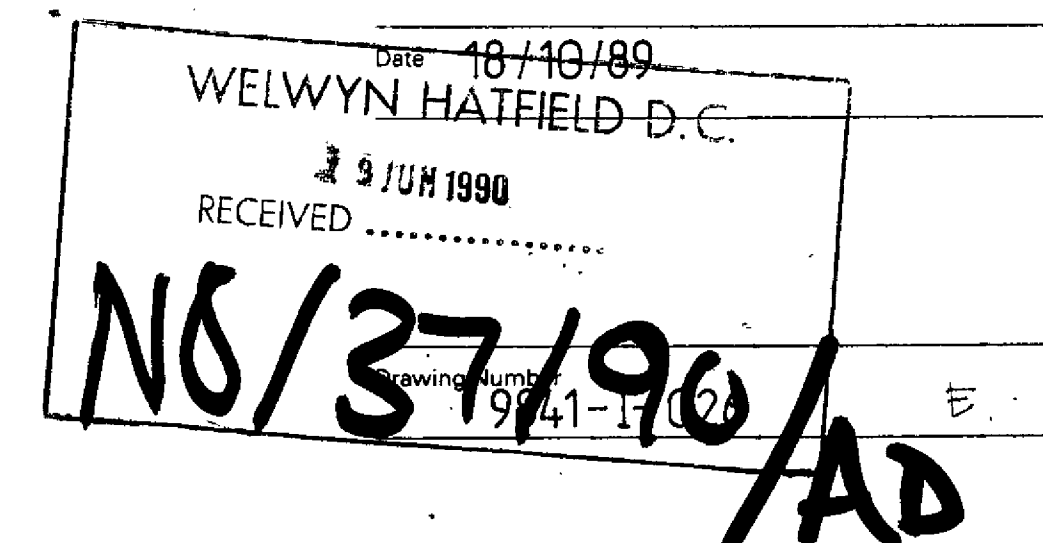
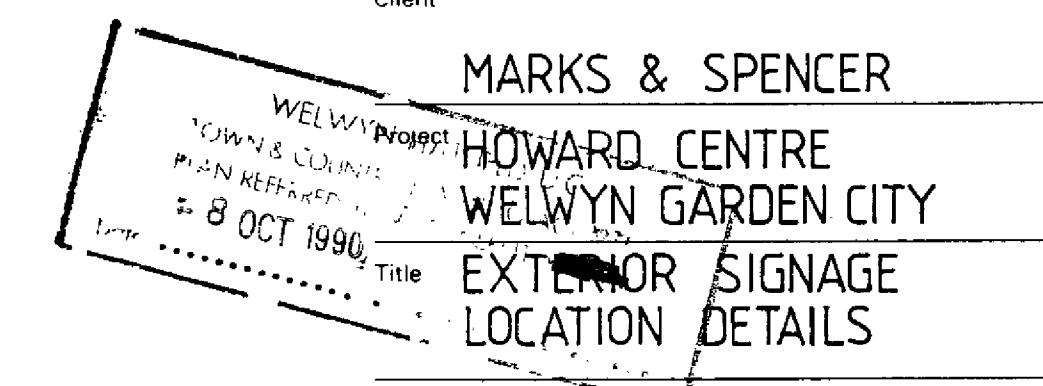
It is forbidden to reproduce this drawing in part or full without the written permission of Aukett Limited.

Aukett Limited
13 Chelsea Embankment
London SW3 4LA
Telephone 01 352 0142
Telex 8953482
Fax 01 351 2281

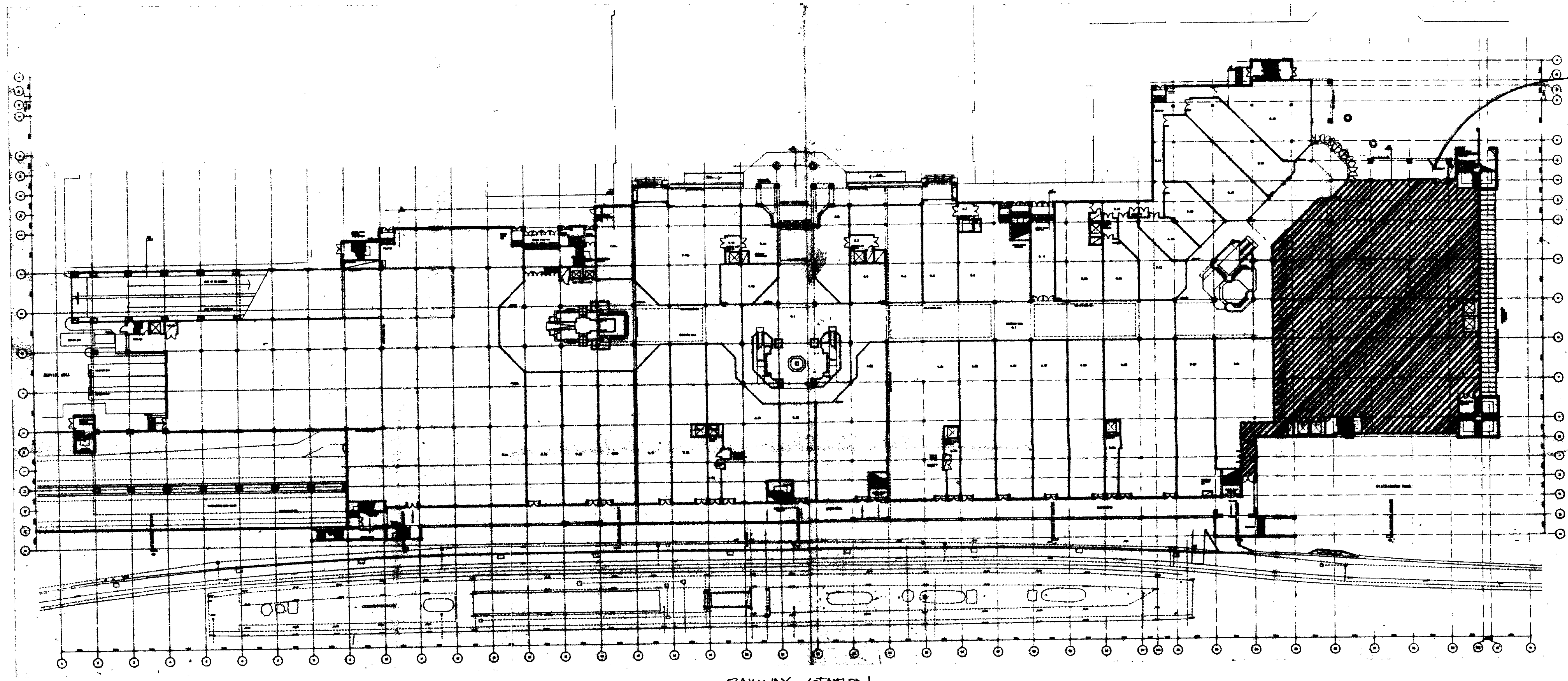
Client

MARKS & SPENCER
HOWARD CENTRE
WELWYN GARDEN CITY
EXTERIOR SIGNAGE
LOCATION DETAILS

Scale 1:50



Revisions



M&S
STORE

RAILWAY STATION

- 11.04.90 CONTRACT SET
- 10.04.90 ISSUE FOR CONSTRUCTION BUILDERS WORK
- 12.03.90 ISSUE FOR CONSTRUCTION 2x NEED PACKAGE
- 14.02.90 DRAWING ISSUED FOR DOCUMENT PACKAGE FOR FLOOR
- 08.02.90 DRAWINGS ISSUED FOR SCREENED PACKAGE
- 05.02.90 DRAWINGS ISSUED FOR BUILDERS WORK PACKAGE.

9.1.90 ISSUE TO MAIN CONTRACTOR FOR THE MAIN CONTRACT

IMPORTANT NOTE

Where no dimensions are given drawings should not be scaled and the matter should be referred to Aukett Limited.

Should dimensions or details on these drawings conflict precedence shall be given to larger scale drawings.

Where this drawing relates to existing buildings or completed construction the contractor shall check that there is no conflict between actual building dimensions and drawing dimensions.

In the event of conflict between this drawing and subcontractor's working drawings for relevant building components then the subcontractor's drawing shall take precedence.

Such conflicts noted above shall be reported immediately to Aukett Limited.

It is forbidden to reproduce this drawing in part or full without the written permission of Aukett Limited.

Aukett Limited
17 Chelsea Embankment
London SW3 4LA
Telephone 01 352 0142
Telex 8953482
Fax 01 351 2281

Client
WELWYN HATFIELD D.C.
MARKS & SPENCER
TECHNICAL SERVICES DEPARTMENT
PLANNING DEPARTMENT
Date 8. OCT 1990

Title
HOWARD CENTRE
WELWYN GARDEN CITY
GROUND FLOOR PLAN OF SHOPPING MALL
Office Copy
Date 06 11 89

WELWYN HATFIELD D.C.
RECEIVED 9 JUN 1990
Drawing Number 9841 I / 007
N0/37/90