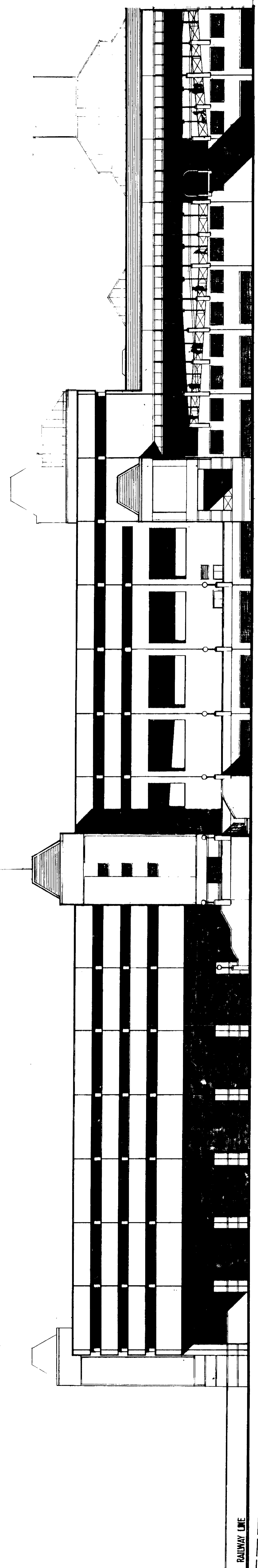


OK



East Elevation - South

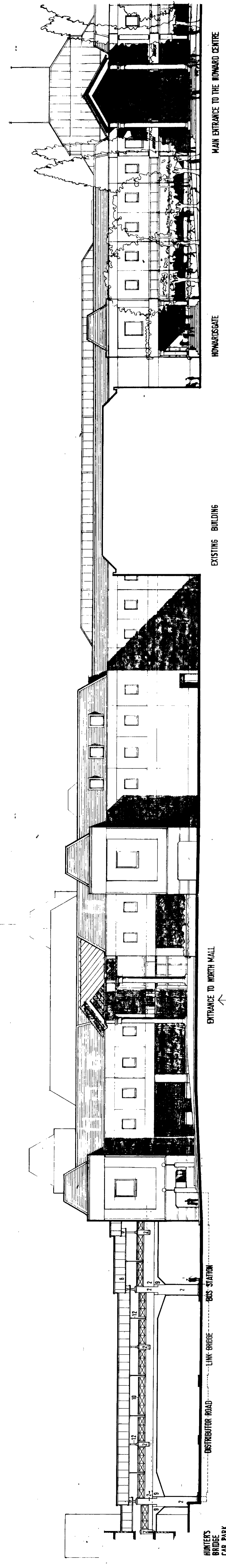
MULTISTOREY CAR PARK

DISTRIBUTOR ROAD

EXISTING BRIDGE TO PLATFORMS

TRAVEL CENTRE

RAILWAY LINE



West Elevation - North

HURTERS BRIDGE CAR PARK

DISTRIBUTOR ROAD

LINK BRIDGE

BUS STATION

ENTRANCE TO NORTH MALL

EXISTING BUILDING

HOWARDGATE

MAIN ENTRANCE TO THE HOWARD CENTRE

The Howard Centre
Welwyn Garden City

Sheppard Robson Architects
 October 89
 (REVISED Jan 90)
 (REVISED Sept 95)

External Signage
Elevations 1
 Scale 1:200

1072/P/43 c

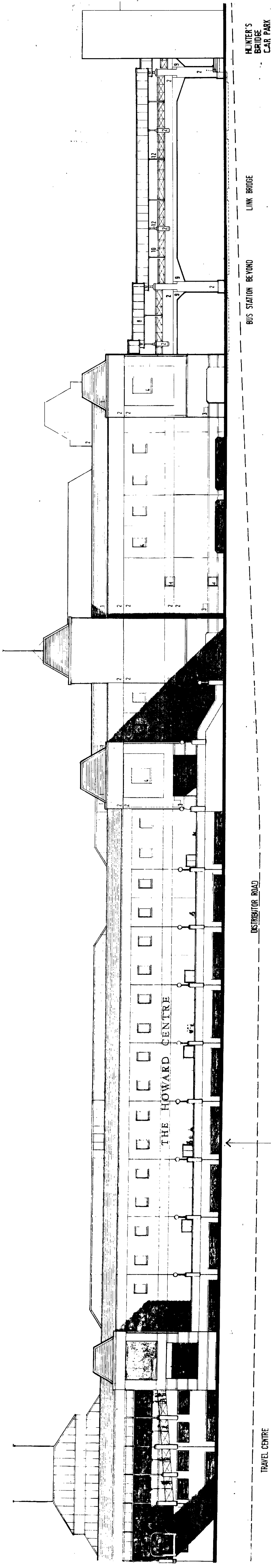
② Main Entrance Signage

① Main Entrance Signage

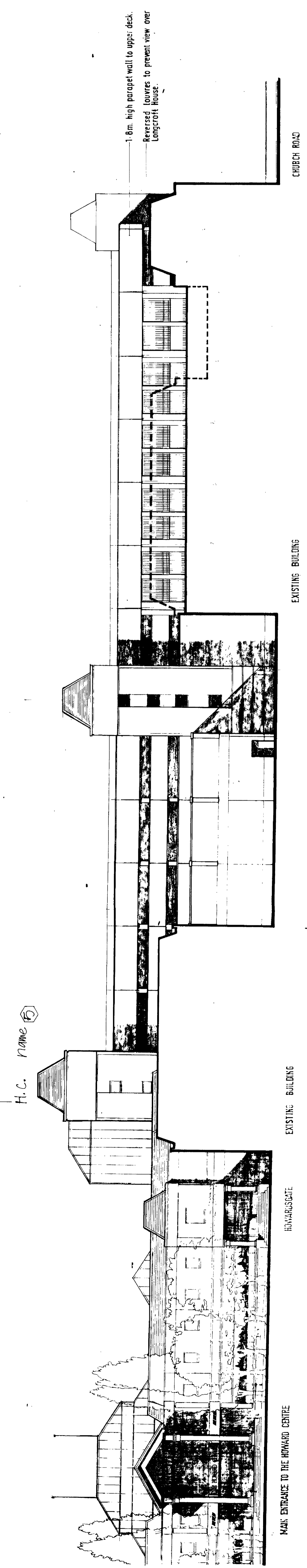
WELWYN HATFIELD DC
 TOWN & COUNTY PLANNING ACT 1991
 PLAN REFERRED TO IN CONSENT DECISION
 Date: 19th Oct 1990

WELWYN HATFIELD D.C.
 6/9 OCT 1990
 RECEIVED
6/008/90

SEE DWG. 1072/16/G
 MATERIAL KEY



East Elevation - North



West Elevation - South

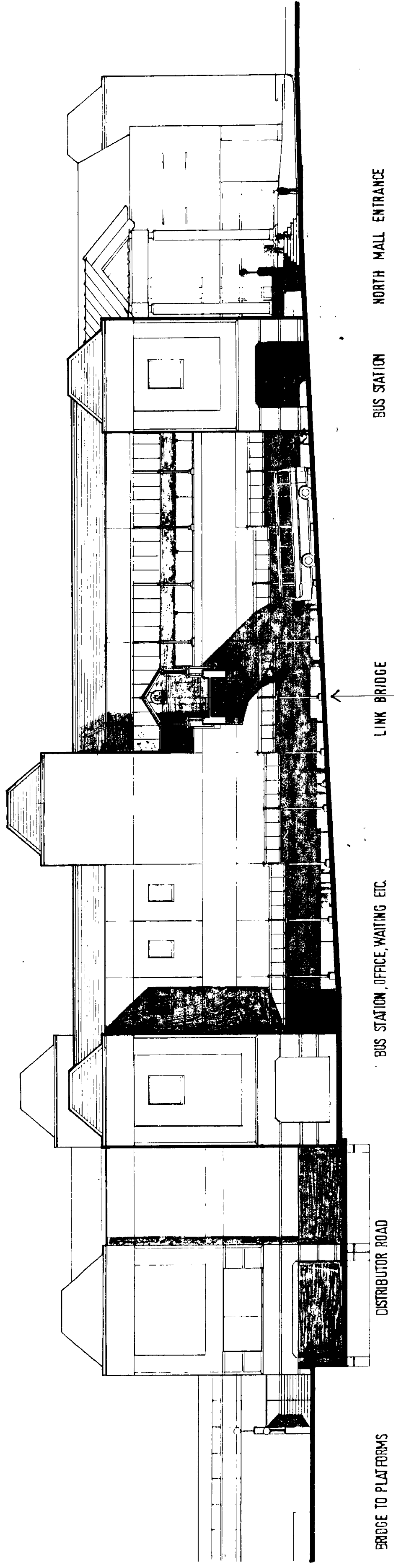
WELWYN HATFIELD D.C.
 RECEIVED 03 OCT 1990
 6/008/90

External Signage
 Elevations 2
 Scale 1:200
 1072/PAC

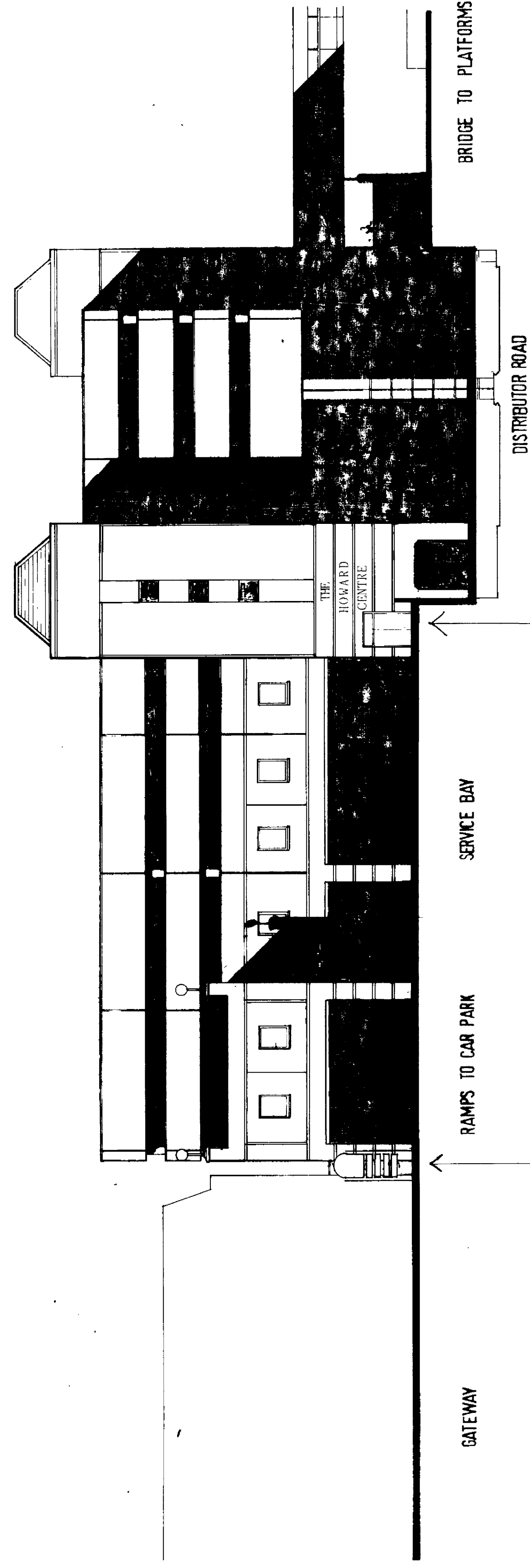
The Howard Centre
 Welwyn Garden City

Sheppard Robson Architects
 DATED 89
 (REVISED JAN 90
 SEPT 96)

- MATERIALS KEY**
- 1 CLAY ROOF TILES
 - 2 FACING BRICKWORK
 - 3 COLOURED BRICK BANDING
 - 4 METAL WINDOW FRAMES
 - 5 GLAZED CANOPY
 - 6 ESCAPE DOORS
 - 7 SHOP FRONTS BY TENANTS
 - 8 GLAZED ROOFLIGHTS
 - 9 WHITE RENDERED CONCRETE
 - 10 METAL BALUSTRADES
 - 11 GLAZED ENTRANCE SCREEN
 - 12 METAL COLUMNS



North Elevation



South Elevation

WELWYN HATFIELD D.C.
RECEIVED 09 OCT 1990
6/008/90

External Signage
Elevations 3
Scale 1:200
Date 10th Oct 1990

The Howard Centre
Welwyn Garden City

Sheppard Robson Architects
October 89
(revised Jan 90
Oct 90)

1072 / P 05 E