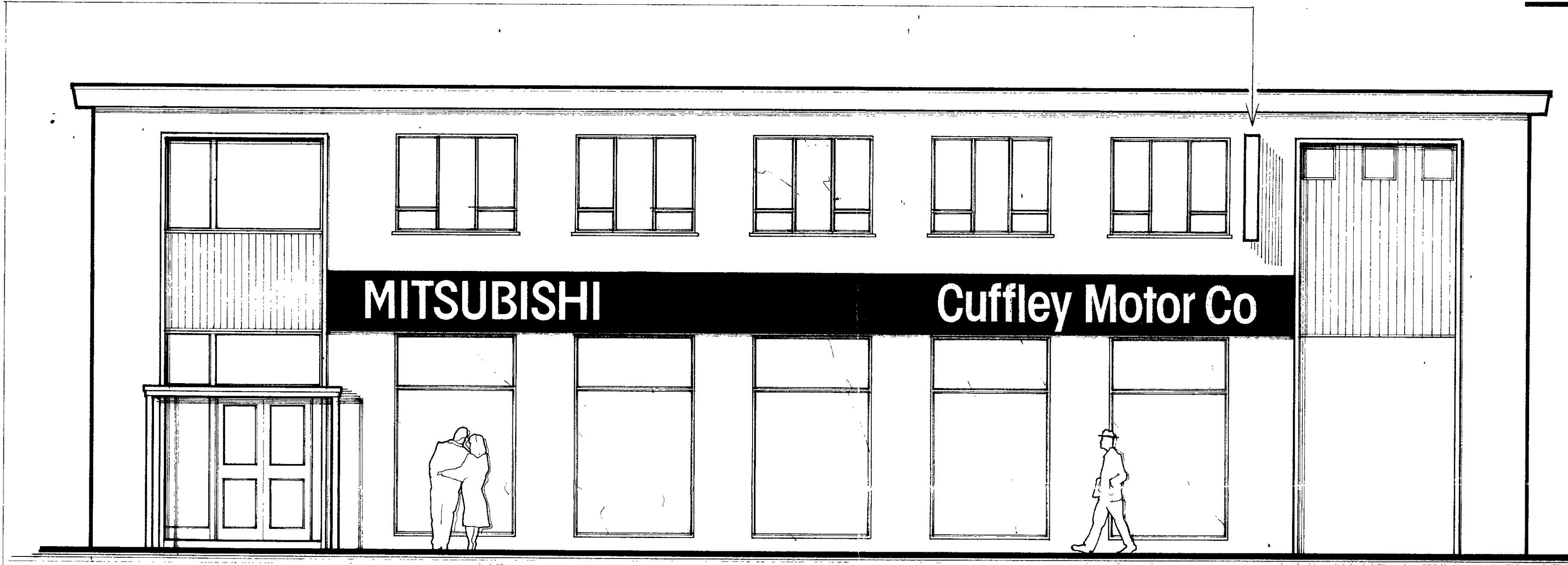


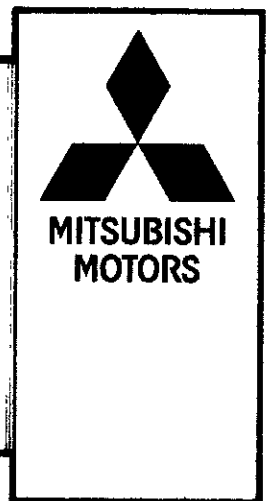
This drawing must not be scaled for manufacturing purposes, nor should any stated dimension be taken as accurate unless confirmed by Contractor or site survey dimensions. The project office should be informed of any variations in order that amendments may be made before fabrication.

The Contractor, Customer or his agent shall verify that any logo, symbol, image or typeface shown is in its correct form subject to any modification necessary to meet technical requirements.

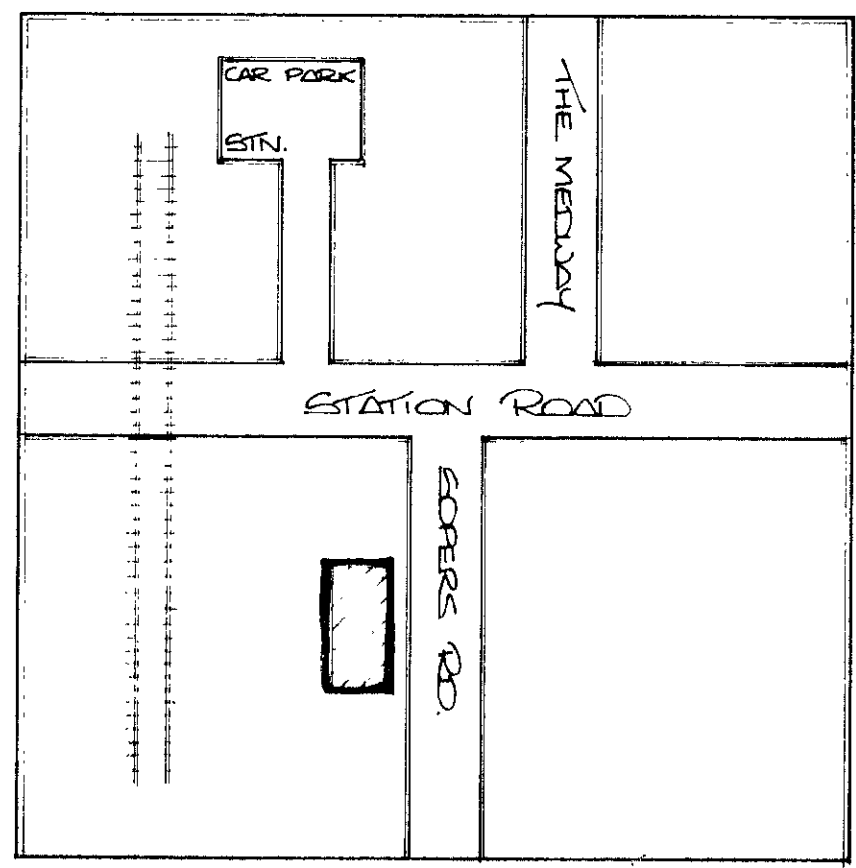


WELWYN HATFIELD D.C.
 30 JUL 1990

OFFICE COPY



ONE DOUBLE SIDED
 PART ILLUMINATED
 PROJECTING SIGN.
 9ALL 800 x 1600 mm.



BLOCK PLAN N.T.S.

SPECIFICATION

ONE SINGLE SIDED PART ILLUMINATED FASCIA SIGN.
 9ALL 15000 x 900 mm.
 FACE PANEL CONSTRUCTED FROM ALUMINIUM FINISHED RED,
 STENCIL CUT WITH PUSHTHROUGH TEXT IN WHITE ACRYLIC.
 TEXT ONLY ILLUMINATED.

ONE DOUBLE SIDED PART ILLUMINATED PROJECTING SIGN.
 9ALL 800 x 1600 mm.
 CONSTRUCTED FROM ALUMINIUM FINISHED WHITE, STENCIL CUT
 WITH LOGO IN RED ACRYLIC. TEXT TO BE BLACK.
 LOGO ONLY ILLUMINATED.

WELWYN HATFIELD D.C.
 11 JUN 1990
 \$/029/90

Project	MITSUBISHI MOTORS, CUFFLEY	
Sheet Title	STATION ROAD CUFFLEY	
Enq No	85543	
Date	11.4.90	
Scale	1:50 & 1:25	
Drawn	B.E.	
Checked		
Drawing No	of	sheets
Revision No	1	Date 23.4.90



PEARCE SIGNS LIMITED
 Insignia House
 London SE14 6AB
 Telephone 01-692 6611
 Telex 965683 PESIGN G
 Fax 01-692 1753