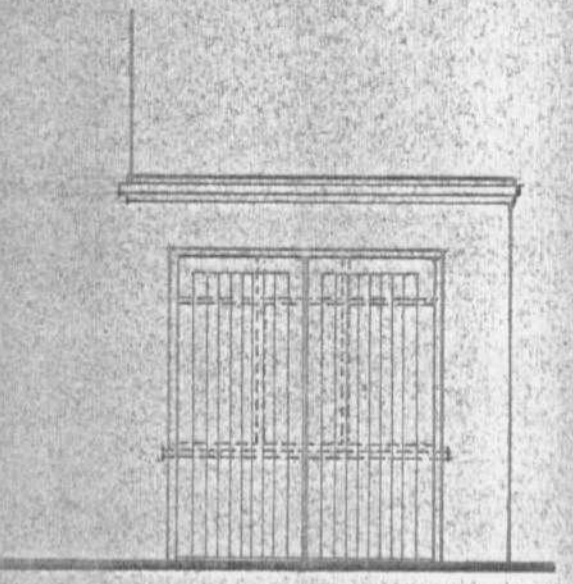
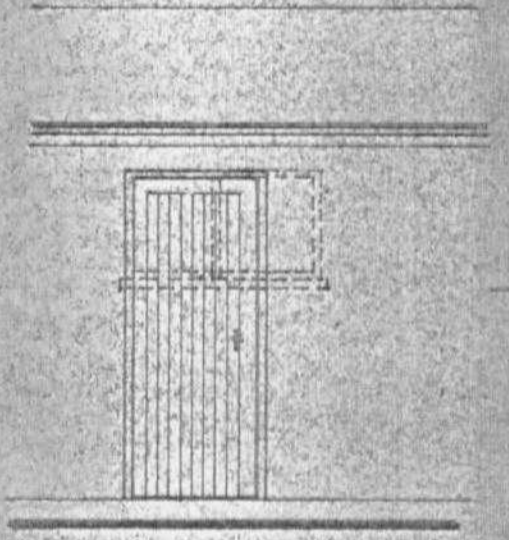


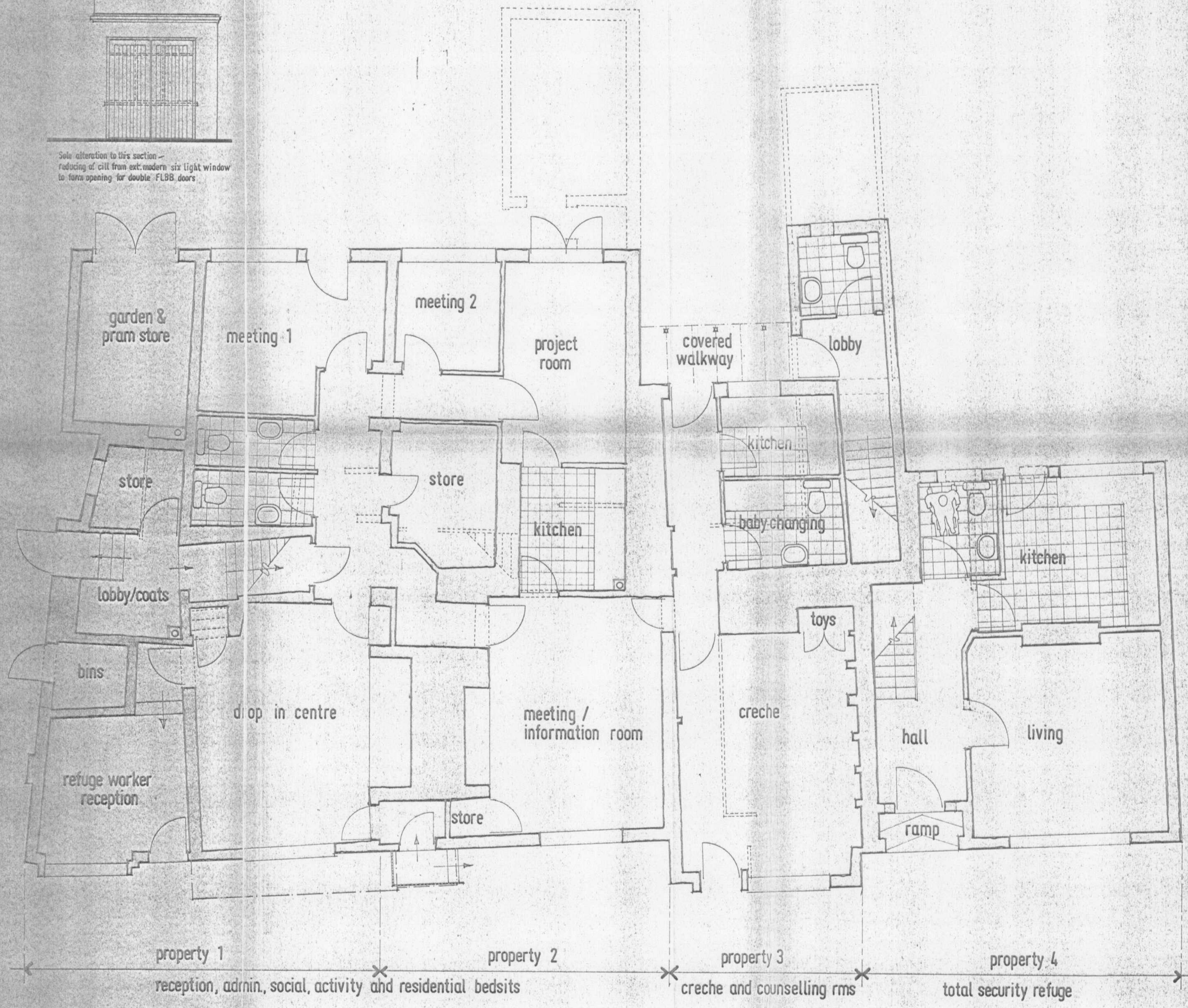
No dimensions to be scaled from this drawing.
 All stated dimensions must be verified on site.
 The Architect must be advised of any discrepancies.
 This drawing must be read in accordance with the
 specification / Bill of Materials and related drawings.



Side alteration to this section -
 Reducing of sill from ext. modern six light window
 to form opening for double FLBB doors



Side alteration to this section -
 alteration to ext. opening for 2 light window
 to form opening for single FLBB door



DEV 6: ELEVATION GRAPHIC REPRESENTATION OF NEW W.S. 10.2.05. CA
 REV A: MINOR SPACE PLANNING ADJUSTMENTS

ARCHER, BOXER, PARTNERS

Architects Surveyors and Planning Consultants.

Head Office
 A.B.P. House,
 Salisbury Square
 Hatfield, Hertfordshire AL9 5AQ
 Telephone: Hatfield 61001
 Associated Offices
 South Melbourne, Sydney, Australia,
 Palma, Majorca, Spain,
 Toronto, Canada.

Project

**7,9,11,15 Park Street,
 Old Hatfield.**

Title

**Ground Floor,
 Proposals**

19 MAR 2008
schastko/ke

Date *Dice* Scale *1/50* Drawn

Drawing No. **18177/P/10** Revision

ABP **18177/P/10** **8**