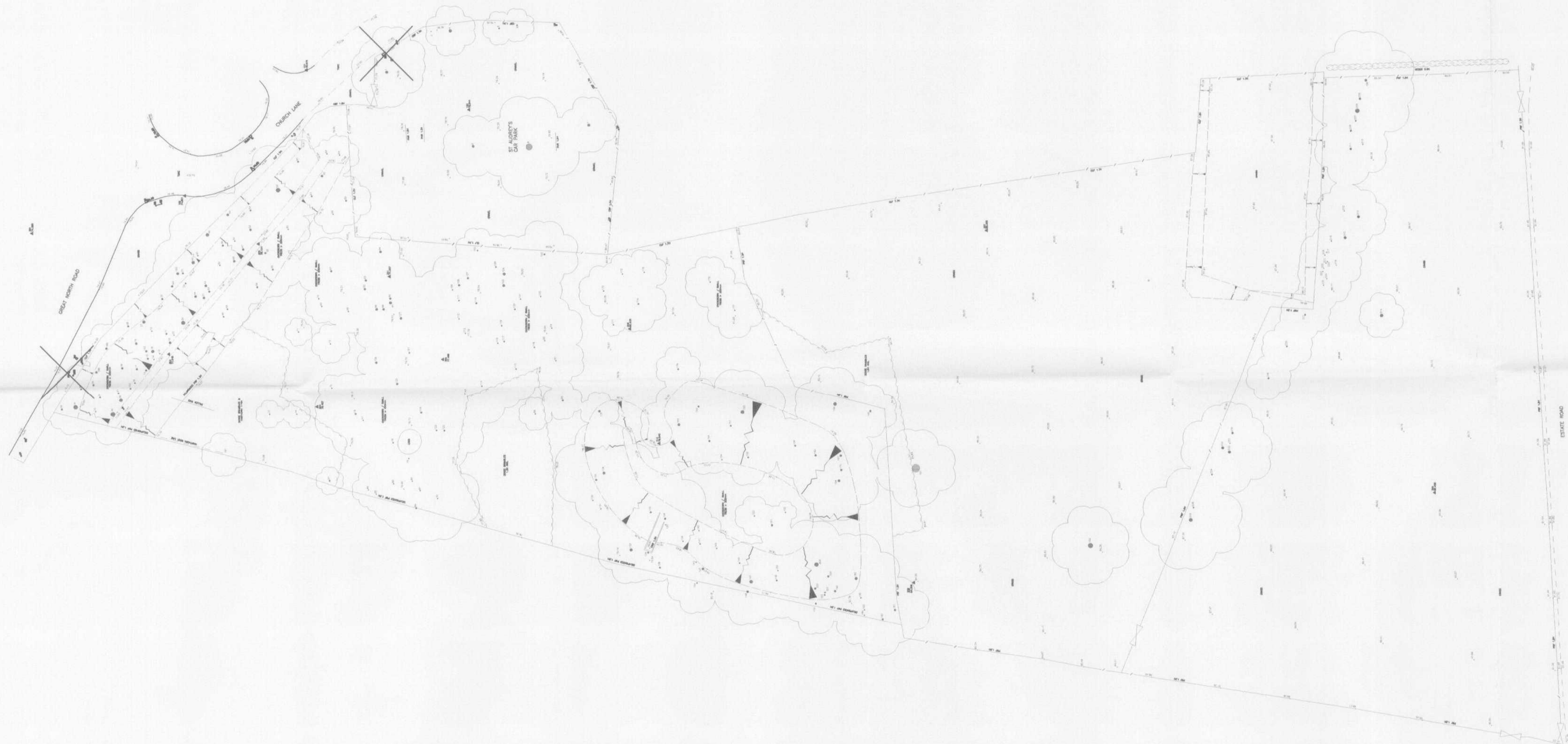


NO.	DBH	SPR	HGT	SPECIES
1	0.2	12	14	HORSE CHESTNUT
2	0.2	12	14	HORSE CHESTNUT
3	0.2	12	14	HORSE CHESTNUT
4	0.2	12	14	HORSE CHESTNUT
5	0.2	12	14	HORSE CHESTNUT
6	0.2	12	14	HORSE CHESTNUT
7	0.2	12	14	HORSE CHESTNUT
8	0.2	12	14	HORSE CHESTNUT
9	0.2	12	14	HORSE CHESTNUT
10	0.2	12	14	HORSE CHESTNUT
11	0.2	12	14	HORSE CHESTNUT
12	0.2	12	14	HORSE CHESTNUT
13	0.2	12	14	HORSE CHESTNUT
14	0.2	12	14	HORSE CHESTNUT
15	0.2	12	14	HORSE CHESTNUT
16	0.2	12	14	HORSE CHESTNUT
17	0.2	12	14	HORSE CHESTNUT
18	0.2	12	14	HORSE CHESTNUT
19	0.2	12	14	HORSE CHESTNUT
20	0.2	12	14	HORSE CHESTNUT
21	0.2	12	14	HORSE CHESTNUT
22	0.2	12	14	HORSE CHESTNUT
23	0.2	12	14	HORSE CHESTNUT
24	0.2	12	14	HORSE CHESTNUT
25	0.2	12	14	HORSE CHESTNUT
26	0.2	12	14	HORSE CHESTNUT
27	0.2	12	14	HORSE CHESTNUT
28	0.2	12	14	HORSE CHESTNUT
29	0.2	12	14	HORSE CHESTNUT
30	0.2	12	14	HORSE CHESTNUT
31	0.2	12	14	HORSE CHESTNUT
32	0.2	12	14	HORSE CHESTNUT
33	0.2	12	14	HORSE CHESTNUT
34	0.2	12	14	HORSE CHESTNUT
35	0.2	12	14	HORSE CHESTNUT
36	0.2	12	14	HORSE CHESTNUT
37	0.2	12	14	HORSE CHESTNUT
38	0.2	12	14	HORSE CHESTNUT
39	0.2	12	14	HORSE CHESTNUT
40	0.2	12	14	HORSE CHESTNUT
41	0.2	12	14	HORSE CHESTNUT
42	0.2	12	14	HORSE CHESTNUT
43	0.2	12	14	HORSE CHESTNUT
44	0.2	12	14	HORSE CHESTNUT
45	0.2	12	14	HORSE CHESTNUT
46	0.2	12	14	HORSE CHESTNUT
47	0.2	12	14	HORSE CHESTNUT
48	0.2	12	14	HORSE CHESTNUT
49	0.2	12	14	HORSE CHESTNUT
50	0.2	12	14	HORSE CHESTNUT
51	0.2	12	14	HORSE CHESTNUT
52	0.2	12	14	HORSE CHESTNUT
53	0.2	12	14	HORSE CHESTNUT
54	0.2	12	14	HORSE CHESTNUT
55	0.2	12	14	HORSE CHESTNUT
56	0.2	12	14	HORSE CHESTNUT
57	0.2	12	14	HORSE CHESTNUT
58	0.2	12	14	HORSE CHESTNUT
59	0.2	12	14	HORSE CHESTNUT
60	0.2	12	14	HORSE CHESTNUT
61	0.2	12	14	HORSE CHESTNUT
62	0.2	12	14	HORSE CHESTNUT
63	0.2	12	14	HORSE CHESTNUT
64	0.2	12	14	HORSE CHESTNUT
65	0.2	12	14	HORSE CHESTNUT
66	0.2	12	14	HORSE CHESTNUT
67	0.2	12	14	HORSE CHESTNUT
68	0.2	12	14	HORSE CHESTNUT
69	0.2	12	14	HORSE CHESTNUT
70	0.2	12	14	HORSE CHESTNUT
71	0.2	12	14	HORSE CHESTNUT
72	0.2	12	14	HORSE CHESTNUT
73	0.2	12	14	HORSE CHESTNUT
74	0.2	12	14	HORSE CHESTNUT
75	0.2	12	14	HORSE CHESTNUT
76	0.2	12	14	HORSE CHESTNUT
77	0.2	12	14	HORSE CHESTNUT
78	0.2	12	14	HORSE CHESTNUT
79	0.2	12	14	HORSE CHESTNUT
80	0.2	12	14	HORSE CHESTNUT
81	0.2	12	14	HORSE CHESTNUT
82	0.2	12	14	HORSE CHESTNUT
83	0.2	12	14	HORSE CHESTNUT
84	0.2	12	14	HORSE CHESTNUT
85	0.2	12	14	HORSE CHESTNUT
86	0.2	12	14	HORSE CHESTNUT
87	0.2	12	14	HORSE CHESTNUT
88	0.2	12	14	HORSE CHESTNUT
89	0.2	12	14	HORSE CHESTNUT
90	0.2	12	14	HORSE CHESTNUT
91	0.2	12	14	HORSE CHESTNUT
92	0.2	12	14	HORSE CHESTNUT
93	0.2	12	14	HORSE CHESTNUT
94	0.2	12	14	HORSE CHESTNUT
95	0.2	12	14	HORSE CHESTNUT
96	0.2	12	14	HORSE CHESTNUT
97	0.2	12	14	HORSE CHESTNUT
98	0.2	12	14	HORSE CHESTNUT
99	0.2	12	14	HORSE CHESTNUT
100	0.2	12	14	HORSE CHESTNUT
101	0.2	12	14	HORSE CHESTNUT
102	0.2	12	14	HORSE CHESTNUT
103	0.2	12	14	HORSE CHESTNUT
104	0.2	12	14	HORSE CHESTNUT
105	0.2	12	14	HORSE CHESTNUT
106	0.2	12	14	HORSE CHESTNUT
107	0.2	12	14	HORSE CHESTNUT
108	0.2	12	14	HORSE CHESTNUT
109	0.2	12	14	HORSE CHESTNUT
110	0.2	12	14	HORSE CHESTNUT
111	0.2	12	14	HORSE CHESTNUT
112	0.2	12	14	HORSE CHESTNUT
113	0.2	12	14	HORSE CHESTNUT
114	0.2	12	14	HORSE CHESTNUT
115	0.2	12	14	HORSE CHESTNUT
116	0.2	12	14	HORSE CHESTNUT
117	0.2	12	14	HORSE CHESTNUT
118	0.2	12	14	HORSE CHESTNUT
119	0.2	12	14	HORSE CHESTNUT
120	0.2	12	14	HORSE CHESTNUT
121	0.2	12	14	HORSE CHESTNUT
122	0.2	12	14	HORSE CHESTNUT
123	0.2	12	14	HORSE CHESTNUT
124	0.2	12	14	HORSE CHESTNUT
125	0.2	12	14	HORSE CHESTNUT
126	0.2	12	14	HORSE CHESTNUT
127	0.2	12	14	HORSE CHESTNUT
128	0.2	12	14	HORSE CHESTNUT
129	0.2	12	14	HORSE CHESTNUT
130	0.2	12	14	HORSE CHESTNUT
131	0.2	12	14	HORSE CHESTNUT
132	0.2	12	14	HORSE CHESTNUT
133	0.2	12	14	HORSE CHESTNUT
134	0.2	12	14	HORSE CHESTNUT
135	0.2	12	14	HORSE CHESTNUT
136	0.2	12	14	HORSE CHESTNUT
137	0.2	12	14	HORSE CHESTNUT
138	0.2	12	14	HORSE CHESTNUT
139	0.2	12	14	HORSE CHESTNUT
140	0.2	12	14	HORSE CHESTNUT
141	0.2	12	14	HORSE CHESTNUT
142	0.2	12	14	HORSE CHESTNUT
143	0.2	12	14	HORSE CHESTNUT
144	0.2	12	14	HORSE CHESTNUT
145	0.2	12	14	HORSE CHESTNUT
146	0.2	12	14	HORSE CHESTNUT
147	0.2	12	14	HORSE CHESTNUT
148	0.2	12	14	HORSE CHESTNUT
149	0.2	12	14	HORSE CHESTNUT
150	0.2	12	14	HORSE CHESTNUT
151	0.2	12	14	HORSE CHESTNUT
152	0.2	12	14	HORSE CHESTNUT
153	0.2	12	14	HORSE CHESTNUT
154	0.2	12	14	HORSE CHESTNUT
155	0.2	12	14	HORSE CHESTNUT
156	0.2	12	14	HORSE CHESTNUT
157	0.2	12	14	HORSE CHESTNUT
158	0.2	12	14	HORSE CHESTNUT
159	0.2	12	14	HORSE CHESTNUT
160	0.2	12	14	HORSE CHESTNUT
161	0.2	12	14	HORSE CHESTNUT
162	0.2	12	14	HORSE CHESTNUT
163	0.2	12	14	HORSE CHESTNUT
164	0.2	12	14	HORSE CHESTNUT
165	0.2	12	14	HORSE CHESTNUT
166	0.2	12	14	HORSE CHESTNUT
167	0.2	12	14	HORSE CHESTNUT
168	0.2	12	14	HORSE CHESTNUT
169	0.2	12	14	HORSE CHESTNUT
170	0.2	12	14	HORSE CHESTNUT
171	0.2	12	14	HORSE CHESTNUT
172	0.2	12	14	HORSE CHESTNUT
173	0.2	12	14	HORSE CHESTNUT
174	0.2	12	14	HORSE CHESTNUT
175	0.2	12	14	HORSE CHESTNUT
176	0.2	12	14	HORSE CHESTNUT
177	0.2	12	14	HORSE CHESTNUT
178	0.2	12	14	HORSE CHESTNUT
179	0.2	12	14	HORSE CHESTNUT
180	0.2	12	14	HORSE CHESTNUT
181	0.2	12	14	HORSE CHESTNUT
182	0.2	12	14	HORSE CHESTNUT
183	0.2	12	14	HORSE CHESTNUT
184	0.2	12	14	HORSE CHESTNUT
185	0.2	12	14	HORSE CHESTNUT
186	0.2	12	14	HORSE CHESTNUT
187	0.2	12	14	HORSE CHESTNUT
188	0.2	12	14	HORSE CHESTNUT
189	0.2	12	14	HORSE CHESTNUT
190	0.2	12	14	HORSE CHESTNUT
191	0.2	12	14	HORSE CHESTNUT
192	0.2	12	14	HORSE CHESTNUT
193	0.2	12	14	HORSE CHESTNUT
194	0.2	12	14	HORSE CHESTNUT
195	0.2	12	14	HORSE CHESTNUT
196	0.2	12	14	HORSE CHESTNUT
197	0.2	12	14	HORSE CHESTNUT
198	0.2	12	14	HORSE CHESTNUT
199	0.2	12	14	HORSE CHESTNUT
200	0.2	12	14	HORSE CHESTNUT
201	0.2	12	14	HORSE CHESTNUT
202	0.2	12	14	HORSE CHESTNUT
203	0.2	12	14	HORSE CHESTNUT
204	0.2	12	14	HORSE CHESTNUT
205	0.2	12	14	HORSE CHESTNUT
206	0.2	12	14	HORSE CHESTNUT
207	0.2	12	14	HORSE CHESTNUT
208	0.2	12	14	HORSE CHESTNUT
209	0.2	12	14	HORSE CHESTNUT
210	0.2	12	14	HORSE CHESTNUT
211	0.2	12	14	HORSE CHESTNUT
212	0.2	12	14	HORSE CHESTNUT
213	0.2	12	14	HORSE CHESTNUT
214	0.2	12	14	HORSE CHESTNUT
215	0.2	12	14	HORSE CHESTNUT
216	0.2	12	14	HORSE CHESTNUT
217	0.2	12	14	HORSE CHESTNUT
218	0.2	12	14	HORSE CHESTNUT
219	0.2	12	14	HORSE CHESTNUT
220	0.2	12	14	HORSE CHESTNUT
221	0.2	12	14	HORSE CHESTNUT
222	0.2	12	14	HORSE CHESTNUT
223	0.2	12	14	HORSE CHESTNUT
224	0.2	12	14	HORSE CHESTNUT
225	0.2	12	14	HORSE CHESTNUT
226	0.2	12	14	HORSE CHESTNUT
227	0.2	12	14	HORSE CHESTNUT
228	0.2	12	14	HORSE CHESTNUT
229	0.2	12	14	HORSE CHESTNUT
230	0.2	12	14	HORSE CHESTNUT
231	0.2	12	14	HORSE CHESTNUT
232	0.2	12	14	HORSE CHESTNUT
233	0.2	12	14	HORSE CHESTNUT
234	0.2	12	14	HORSE CHESTNUT
235	0.2	12	14	HORSE CHESTNUT
236	0.2	12	14	HORSE CHESTNUT
237	0.2	12	14	HORSE CHESTNUT
238	0.2	12	14	HORSE CHESTNUT
239	0.2	12	14	HORSE CHESTNUT
240	0.2	12	14	HORSE CHESTNUT



USE FIGURED DIMENSIONS ONLY
DO NOT SCALE FROM THIS DRAWING
ALL DIMENSIONS MUST BE CHECKED ON SITE ANY
INCONSISTENCIES MUST BE REPORTED BACK TO THE ARCHITECT
THIS DRAWING AND ANY DESIGNS INCORPORATED THEREIN ARE THE
COPYRIGHT OF BROOKS / MURRAY ARCHITECTS
ALL RIGHTS ARE RESERVED
NO PART OF THIS WORK MAY BE REPRODUCED WITHOUT PRIOR
PERMISSION IN WRITING FROM BROOKS / MURRAY ARCHITECTS

Rev	Amendment	Date
A		
B		
C		
D		

PLANNING DEPARTMENT
OFFICE COPY
- 5 APR 2008
No.: 08/0690/

BROOKS / MURRAY
ARCHITECTS
8-10 NEW NORTH PLACE
LONDON EC2A 4JA
TEL: 020 7739 9555
FAX: 020 7739 9944
architect@brooksmurray.com

CLIENT: GASCOYNE CECIL ESTATES
JOB: ST. AUDREY'S CAR PARK HATFIELD HERTS
DATE: Mar 2008 SCALE: 1:500
DRAWING TITLE: EXISTING SURVEY DRAWING
DRAWING NUMBER: 757-03