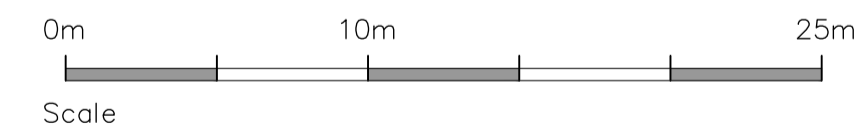
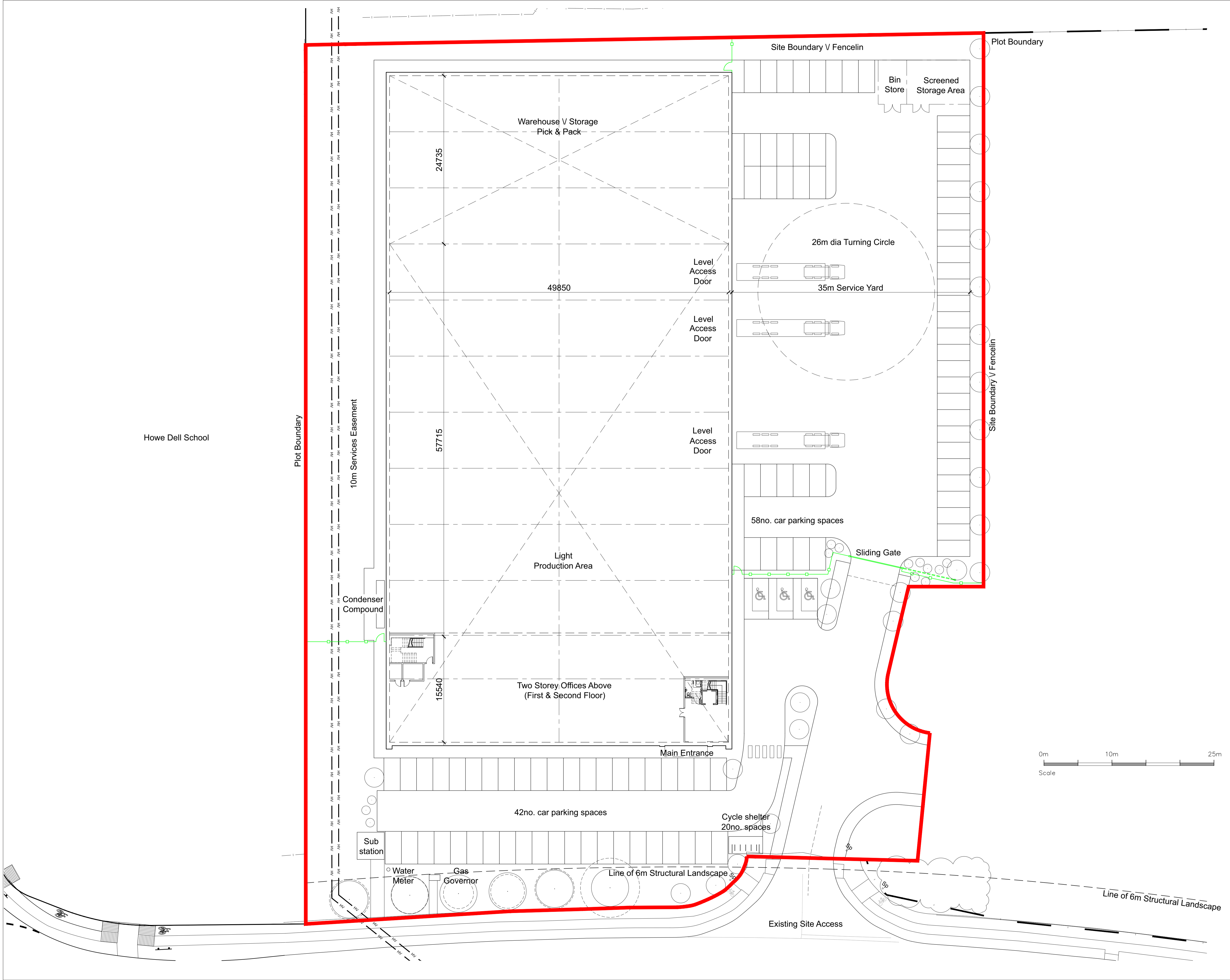


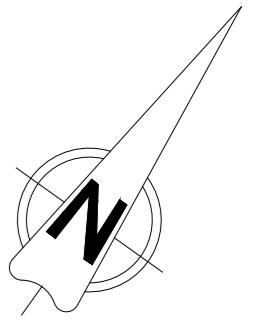
notes
 Where this drawing contains any Ordnance Survey mapping material, it has been reproduced under license number 100022278.
 Ordnance Survey © Crown copyright



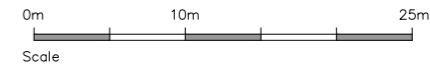
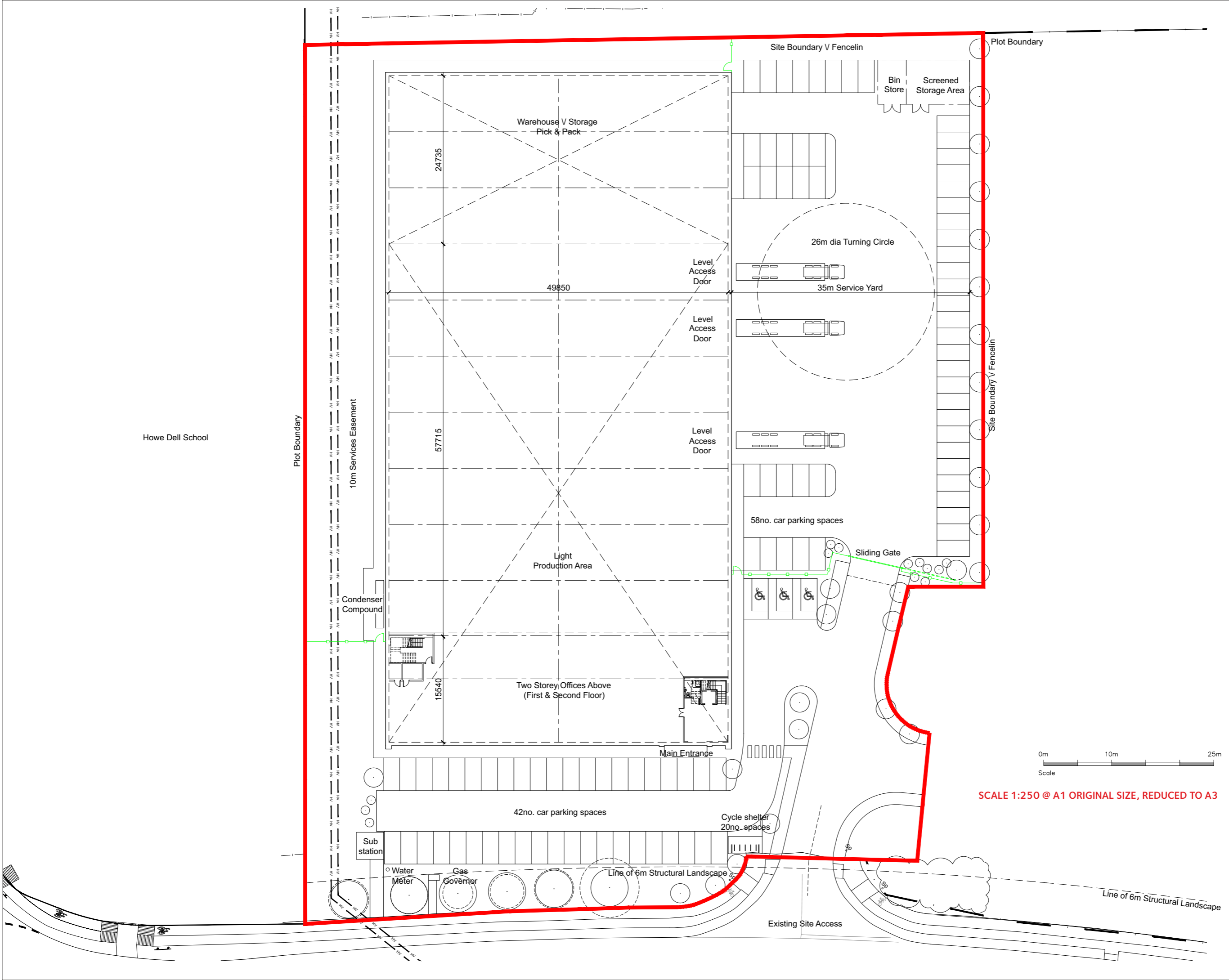
Unit 1a Astonbury Business Park, Aston
 Stevenage, Hertfordshire.
 SG2 7EG
 Tel: (01438) 880181
 Fax: (01438) 880182

Project
PROPOSED SIGNAGE
PLOT 5000 HATFIELD BUSINESS PARK
 Title
SITE PLAN

Drawn by JVF	Checked S.P.	File AA-BB-CC
Drawing Number AB-SP-001 PLANNING	Revision 0.0	Scale 1:250 @ A1 Date 07/06/2018



notes
 Where this drawing contains any Ordnance Survey mapping material, it has been reproduced under license number 100052278.
 Ordnance Survey © Crown copyright.



SCALE 1:250 @ A1 ORIGINAL SIZE, REDUCED TO A3



Unit 1a Astonbury Business Park, Aston
 Stevenage, Hertfordshire.
 SG2 7EG
 Tel: (01438) 880181
 Fax: (01438) 880182

Project
**PROPOSED SIGNAGE
 PLOT 5000 HATFIELD BUSINESS PARK**
 Title
SITE PLAN

Drawn by JVF	Checked S.P.	File AA-BB-CC
Drawing Number AB-SP-001 PLANNING	Revision 0.0	Scale 1:250 @ A1 Date 07/06/2018

