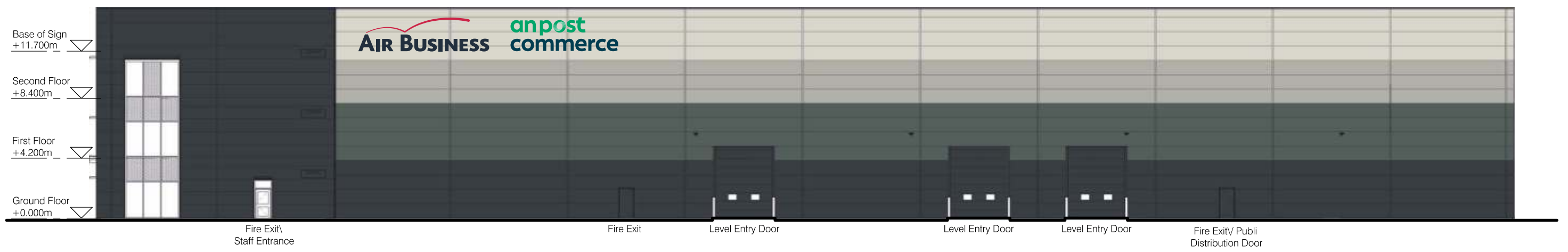




Built-Up Aluminium logo with a depth of 120mm.
 Painted to corporate colours.
 *Halo effect illumination - White

*The intensity of illumination shall be controlled at a level that is within the limit recommended by the Institute of Lighting Engineers in the publication 'Technical Report No 5 Brightness of Illuminated Advertisements' and 'Guidance Notes for the Reduction of Obtrusive Light GN021: 2011' REASON: In the interests of highway safety and amenity.



EAST ELEVATION

Design Proposal: APC-JVF.03

Client: Air Business
 Item: External Signage - Hatfield

SCALE 1:200 @ A2 ORIGINAL SIZE, REDUCED TO A3