



Photo 1: View of application site from Mosquito Way



Photo 2: View of location of proposed advertisement

Building 4000, Hatfield Business Park
Site Photographs

1334/03
Rev FINAL VERSION 1
Not to Scale

28/11/14

jb planning associates
town planning
and development
consultants

Chells Manor
Chells Lane
STEVENAGE
SG2 7AA

info@jbplanning.com
www.jbplanning.com
T 01438 312130
F 01438 312131

© JB Planning Associates 2014



Photo 3: Trident Place office development, located on the opposite side of Mosquito Way



Photo 4: View of wider street scene, looking north east along Mosquito Way

Building 4000, Hatfield Business Park
Site Photographs

1334/03
Rev FINAL VERSION 1
Not to Scale

26/11/14

jb planning associates
town planning
and development
consultants

Chells Manor
Chells Lane
STEVENAGE
SG2 7AA

info@jbplanning.com
www.jbplanning.com
T 01438 312130
F 01438 312131

© JB Planning Associates 2014



Photo 5: View to the rear of the application site, from Gypsy Moth Avenue



Photo 6: Toolbank Building, with fascia sign

Building 4000, Hatfield Business Park
Site Photographs

1334/03
Rev FINAL VERSION 1
Not to Scale

28/11/14

jb planning associates
town planning
and development
consultants

Chells Manor
Chells Lane
STEVENAGE
SG2 7AA

info@jbplanning.com
www.jbplanning.com
T 01438 312130
F 01438 312131

© JB Planning Associates 2014



Photo 7: View from Mosquito Way of F&F Building with illuminated sign

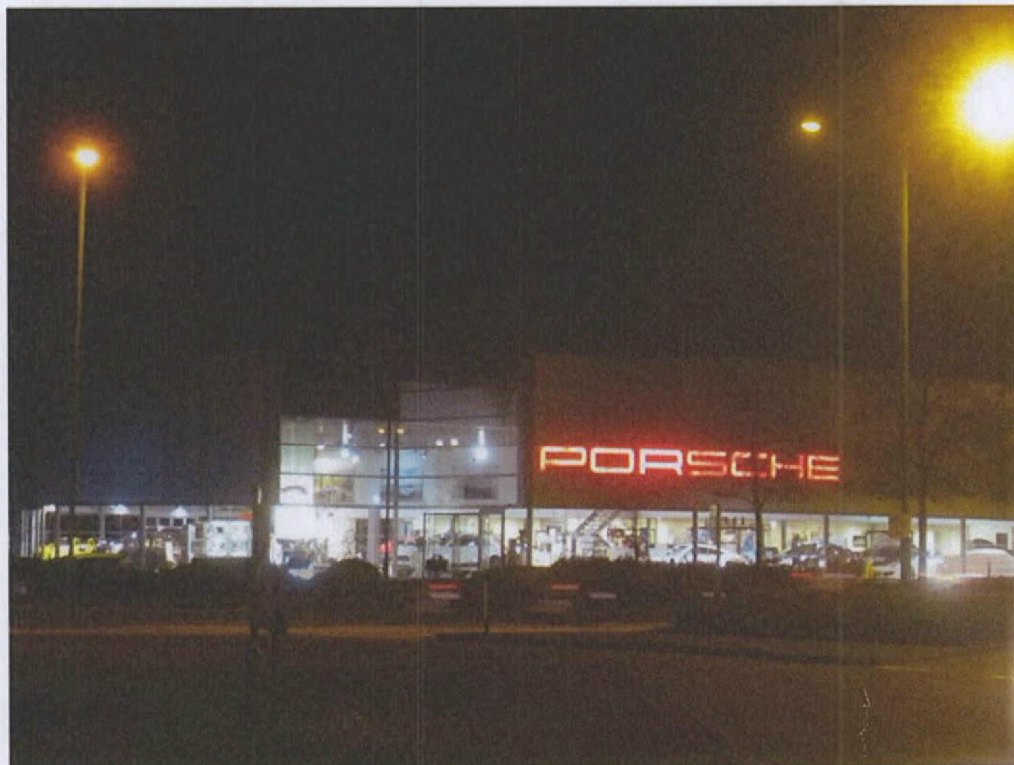


Photo 8: View of Porsche dealership with illuminated sign

Building 4000, Hatfield Business Park
Site Photographs

1334/03
Rev FINAL VERSION 1
Not to Scale

28/11/14

jb planning associates
town planning
and development
consultants

Chells Manor
Chells Lane
STEVENAGE
SG2 7AA

info@jbplanning.com
www.jbplanning.com
T 01438 312130
F 01438 312131

© JB Planning Associates 2014