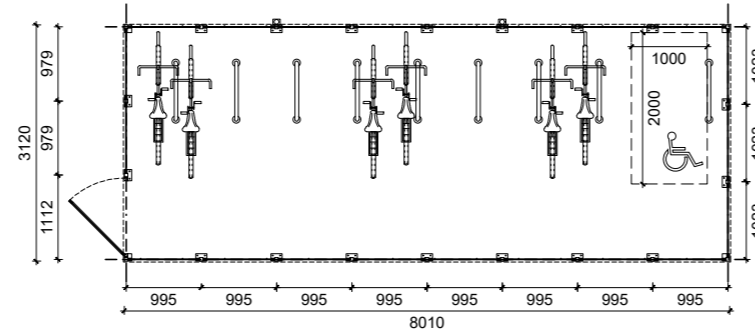
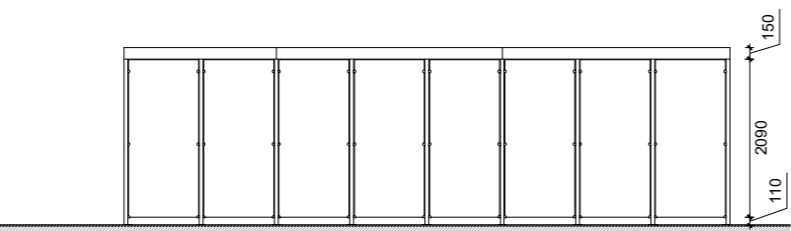


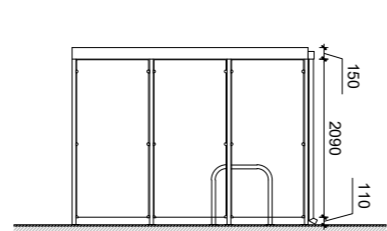
Cycle store 1



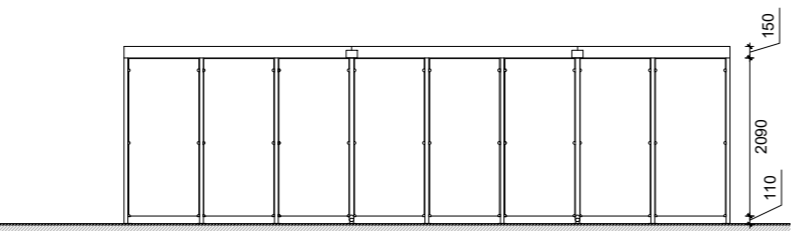
Proposed Plan



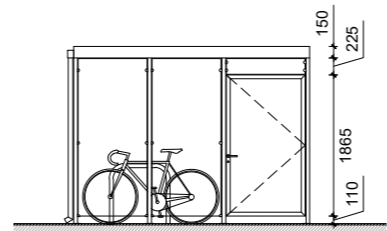
West Elevation



South Elevation

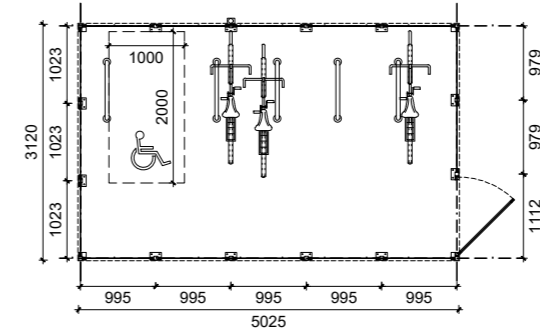


East Elevation

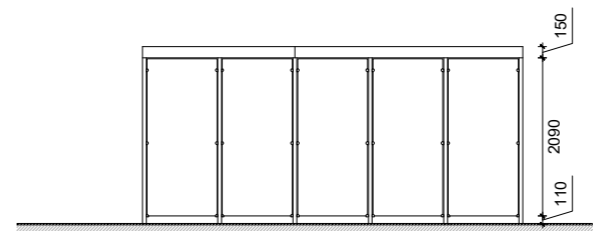


North Elevation

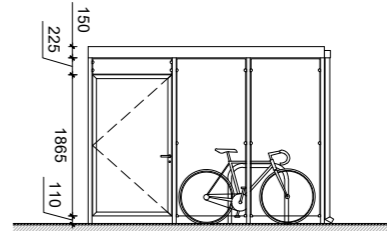
Cycle store 2



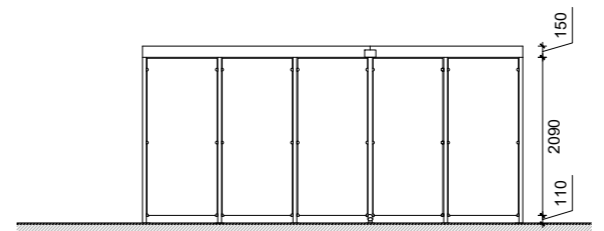
Proposed Plan



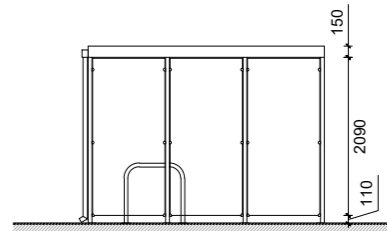
West Elevation



South Elevation

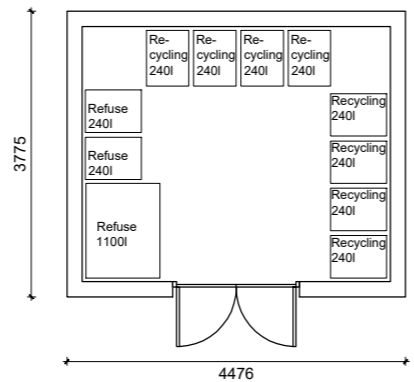


East Elevation

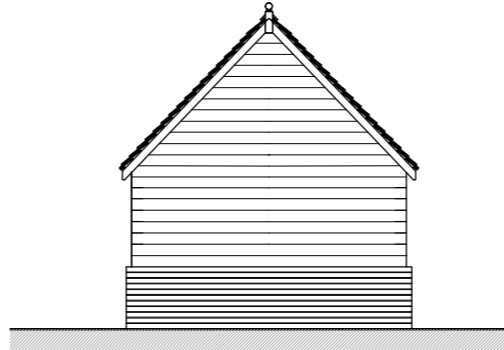


North Elevation

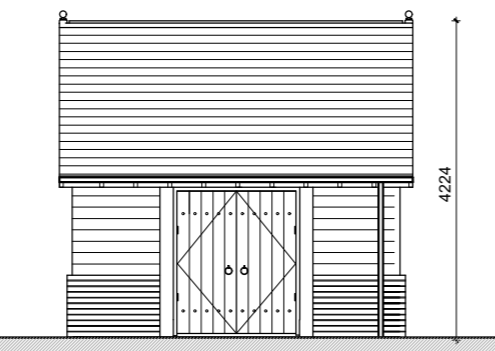
Bin stores A: Residential



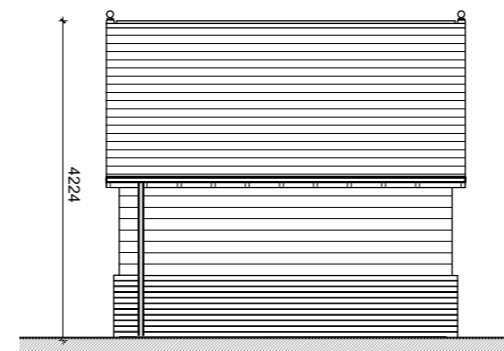
Proposed Plan



North South Elevation

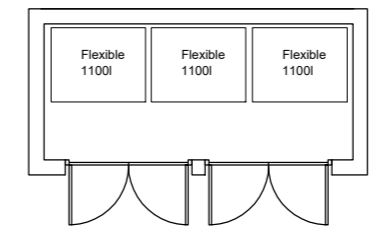


East Elevation

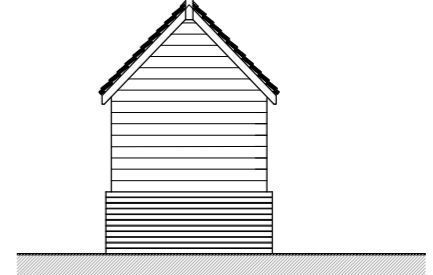


West Elevation

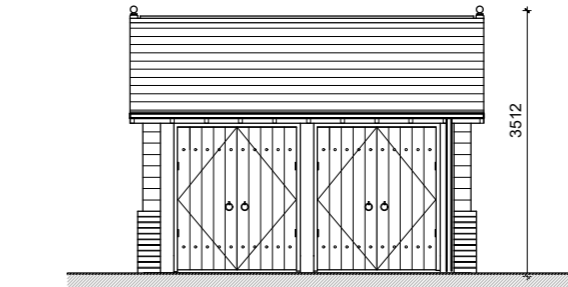
Bin store B: Commercial



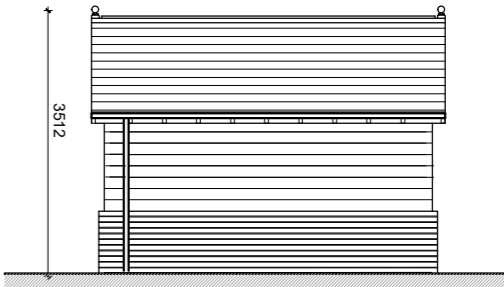
Proposed Plan



East West Elevation



South Elevation



North Elevation

USE FIGURED DIMENSIONS ONLY. DO NOT SCALE FROM THIS DRAWING EXCEPT FOR PLANNING PURPOSES. ALL DIMENSIONS MUST BE CHECKED ON SITE ANY INCONSISTENCIES MUST BE REPORTED BACK TO THE ARCHITECT. THIS DRAWING AND ANY DESIGNS INDICATED THEREON ARE THE COPYRIGHT OF BROOKS & MURRAY ARCHITECTS. ALL RIGHTS ARE RESERVED. NO PART OF THIS WORK MAY BE PRODUCED WITHOUT PRIOR PERMISSION IN WRITING FROM BROOKS & MURRAY ARCHITECTS. PLANNING STAGE DRAWINGS SHOULD NOT BE USED FOR CONSTRUCTION.

REV.	AMENDMENT	BY:	DATE
A	Minor amendments to Refuse Stores	PH	07.04.22
B	Cycle stores enlarged to accommodate disabled parking	SR	26.05.22

N

Brooks Murray Architects
The Arts Building, Morris Place, N4 3JG
+44 (0)2077399555 admin@brooksmurray.com

brooks murray

CLIENT:
GASCOYNE ESTATES

JOB:
SALISBURY SQUARE
HATFIELD
AL9 5AD

DRAWING TITLE:
PROPOSED REFUGE
AND CYCLE STORE

SCALE:
1:100 @ A2

DATE:
NOVEMBER 2021

STATUS:
PLANNING

DRAWING NUMBER: 789 - PL - 080
REV: B
ISSUED BY: SR