

Alder King
Pembroke House
15 Pembroke Road
Bristol
BS8 3B

Head Office **0191 620 0750**
Midlands **0115 708 0750**
E info@apexacoustics.co.uk
W www.apexacoustics.co.uk

27th March 2019
Ref. 6206.11A

Comet Hotel, Hatfield –Planning Condition 4, Item J

1 Introduction

This letter provides the details required for the discharge of Condition 4, Item J

The condition states:

Notwithstanding the details shown on the approved drawings, no works to the Listed Building (excluding the approved demolition works) shall take place until the following listed building details have been submitted to and agreed in writing by the Local Planning Authority:

....

(j) sound insulation and mechanical vents for hotel function rooms and bedrooms;

.....

The development shall be implemented in accordance with the approved details and, subsequently, shall not be changed.

REASON: To ensure that the special architectural and historic interest and character and appearance of the building are properly maintained, in accordance with the National Planning Policy Framework and standard conservation good practice.



4051



CONTRACTORS HEALTH & SAFETY ASSESSMENT SCHEME
Accredited Contractor



Apex Acoustics is a UKAS-accredited laboratory no. 4051 for sound insulation and air leakage testing. Other services are not accredited. Co. Reg. In England no. 05656507 at Design Works, William St, Gateshead, NE10 0JP

2 Function Room

The function room is ventilated with a room mounted heat recovery unit as shown in Figure 1

The inlet and exhaust, which terminate on the outside of the hotel, are fitted with attenuation within the ductwork runs as shown.

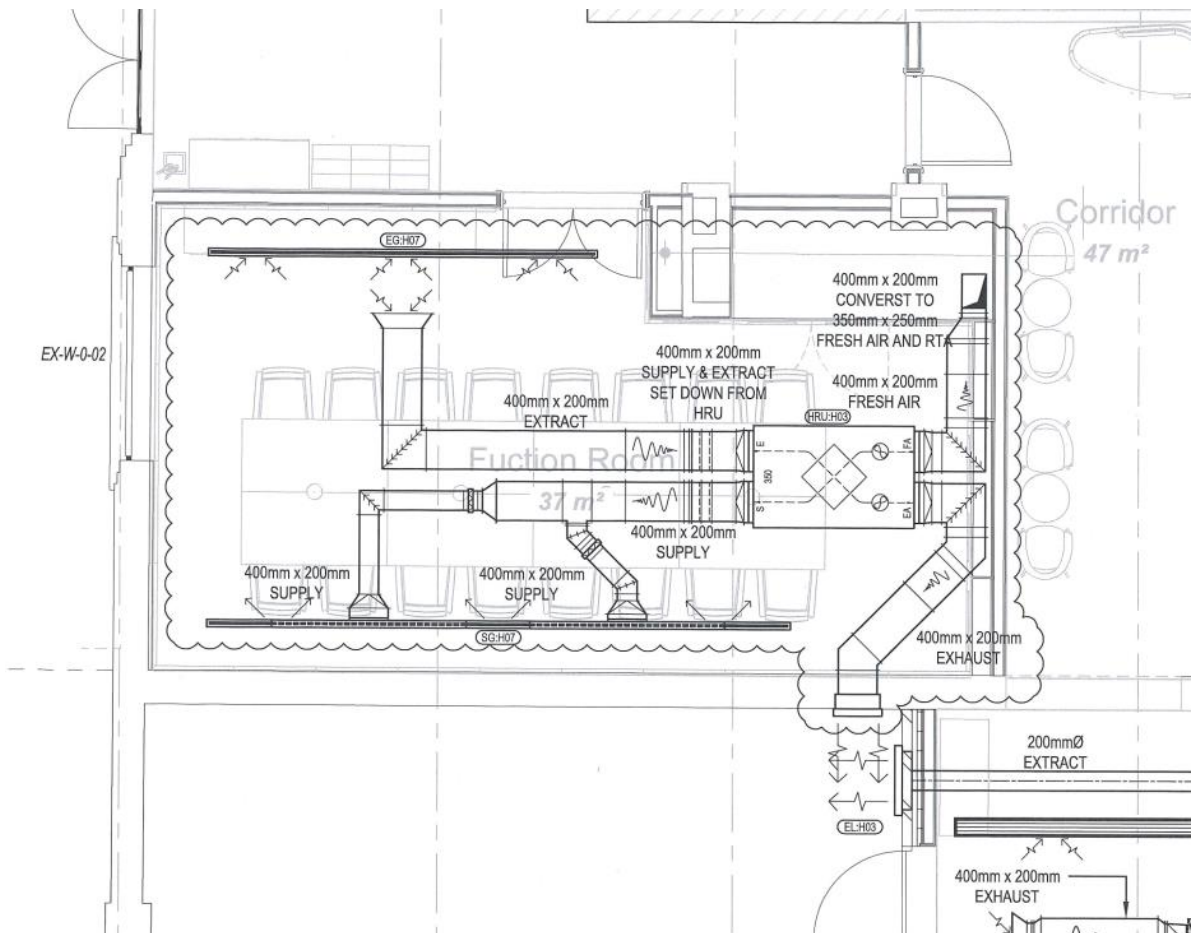


Figure 1: Function room ventilation layout

3 Hotel bedrooms

The hotel bedrooms are individually air conditioned and do include façade mounted vents. The typical layout for the bedrooms is shown in Figure 2.

The individual units include attenuation to meet the hotel operator requirements within the bedrooms.

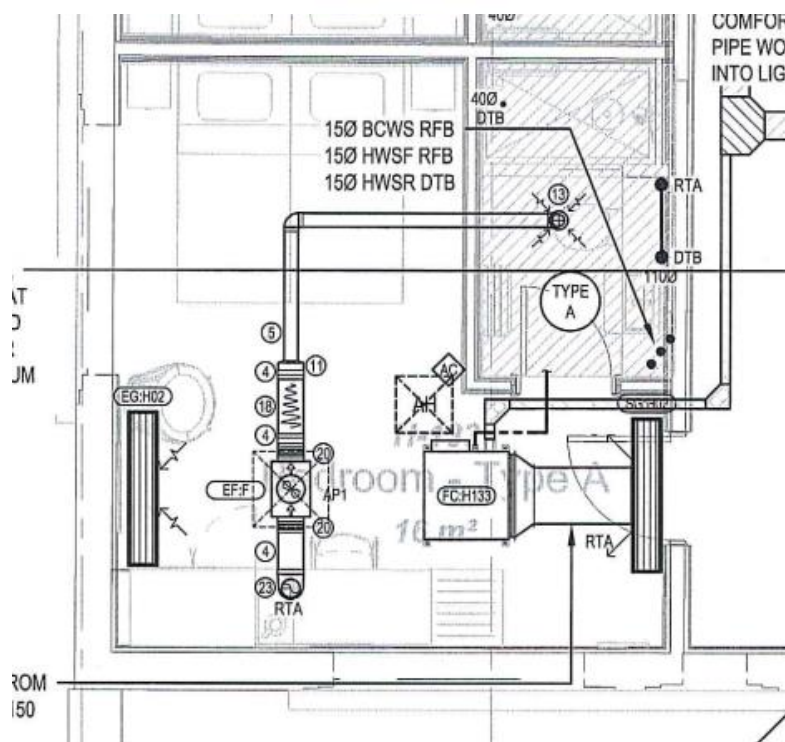


Figure 2: Hotel bedroom room ventilation layout

Prepared by:

Nick Conlan BEng MIOA
Acoustic Consultant