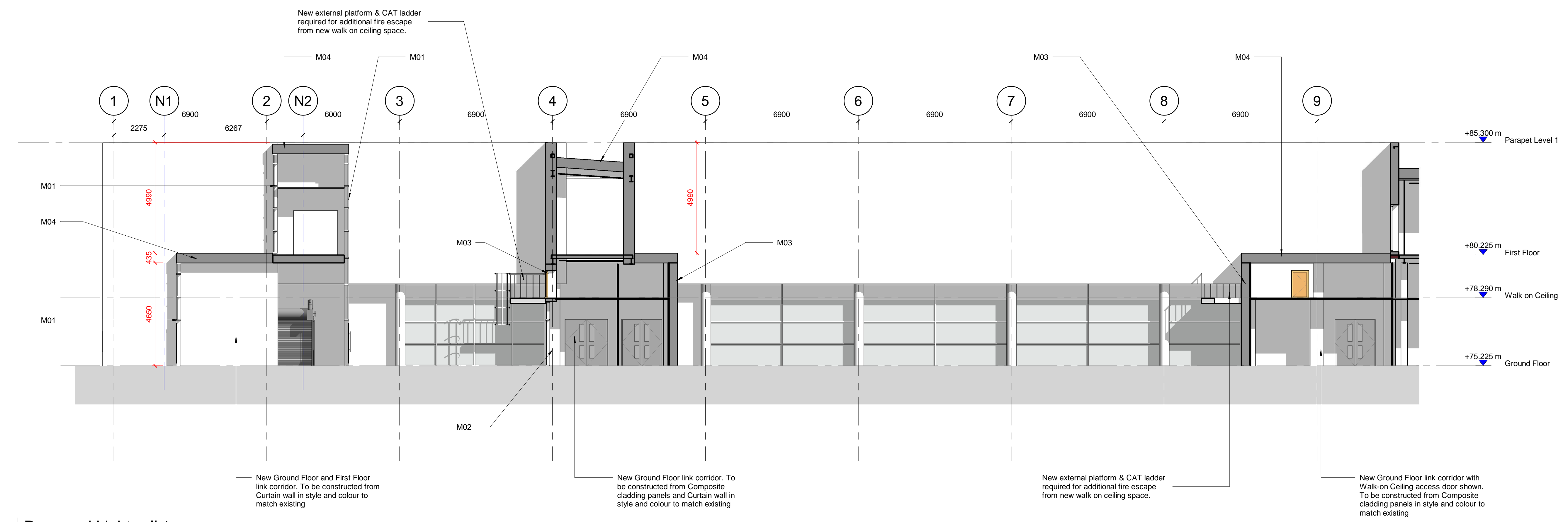
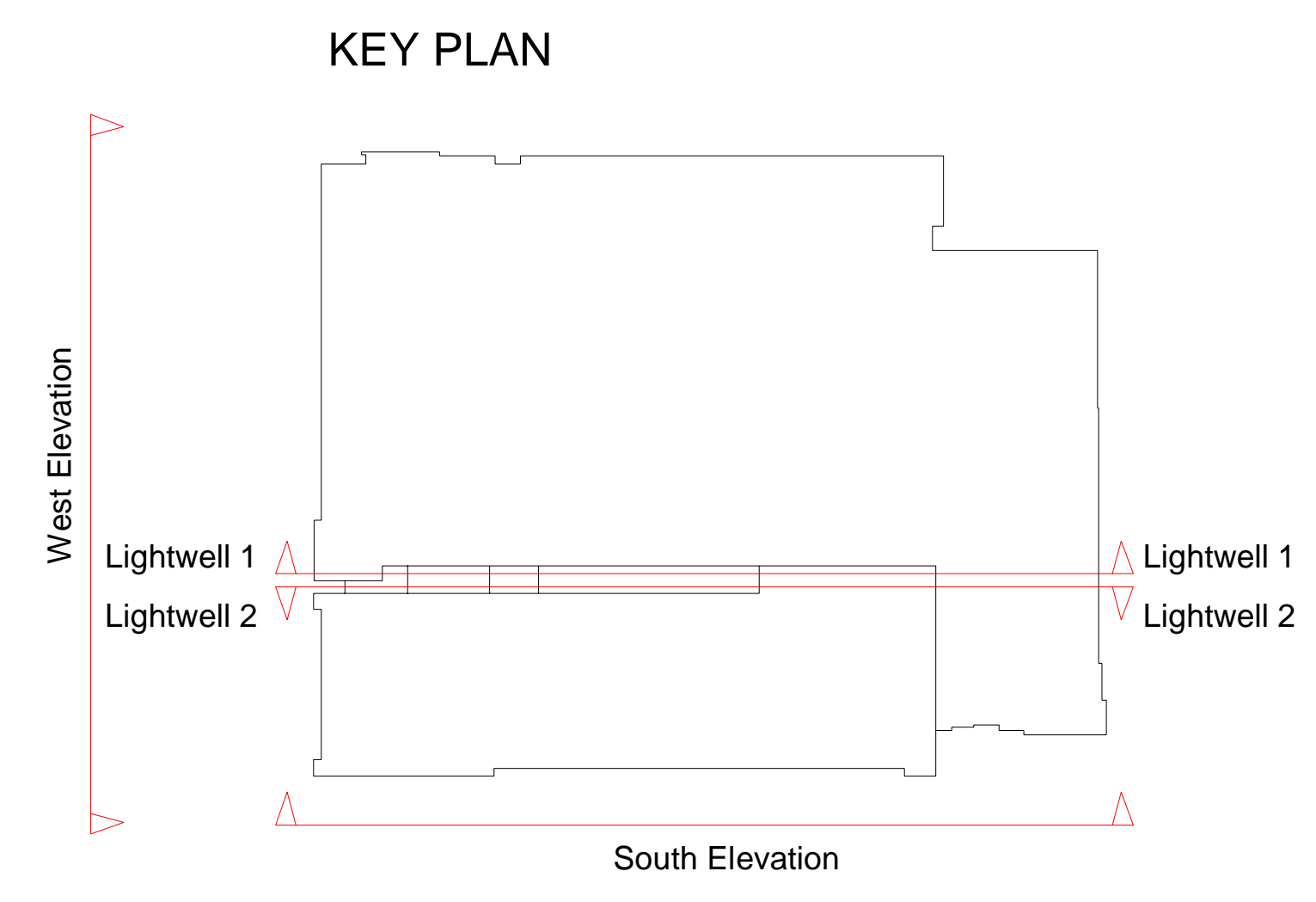
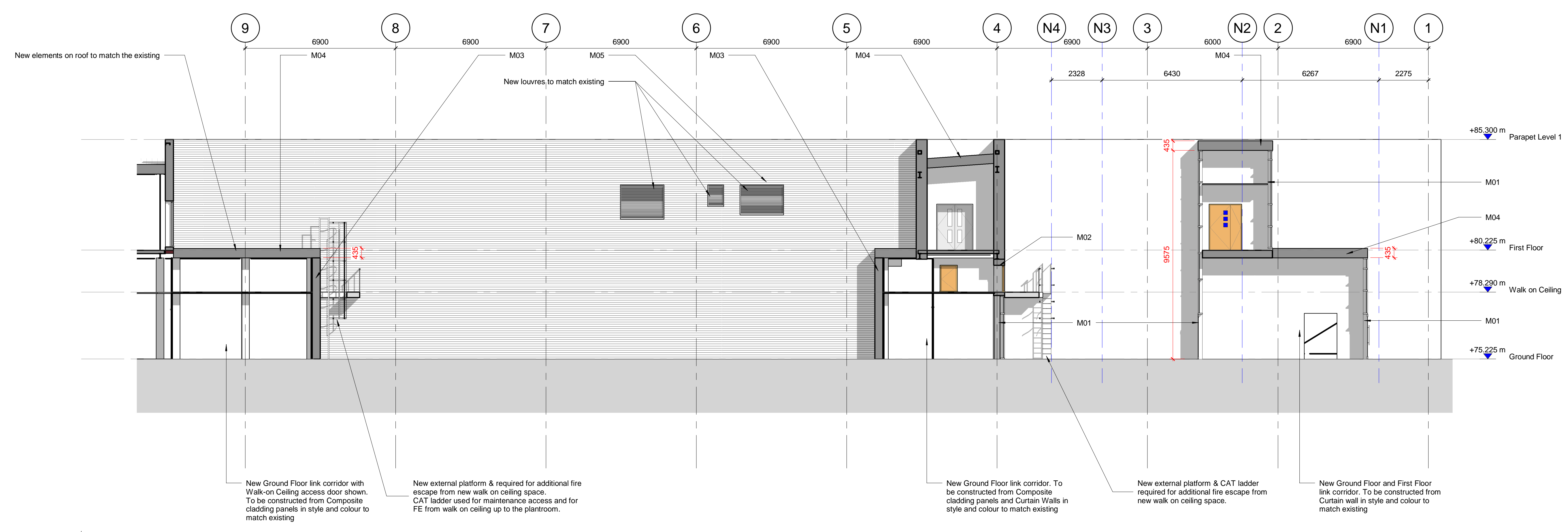


- M01** - Powder Coated Aluminium Curtain Walling System
- M02** - Sto Therm Insulated Render
- M03** - Euroclad Elite 55 Composite Cladding Panels
- M04** - Kingspan KS1000 QuadCore Trapezoidal Composite Insulated Roof Panels
- M05** - PPC Aluminium Louvres fix to ducting

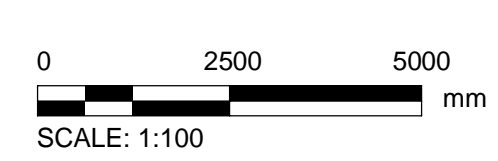
Rev.	Date	Description	Author
P1	17/09/20	PLANNING ISSUE	GOV/BA/US
P2	02/10/20	PLANNING ISSUE	MAN/STY/T
P3			DRY/CH/AR



Proposed Lightwell 1
 SCALE: 1:100



Proposed Lightwell 2
 SCALE: 1:100



This drawing has been prepared for the use of AECOM's client. It may not be used, modified, reproduced or relied upon by third parties, except as agreed by AECOM or as required by law. AECOM accepts no responsibility and denies any liability whatsoever, to any party that uses or relies on this drawing, without AECOM's express written consent. Do not scale this document. All measurements must be obtained from the stated