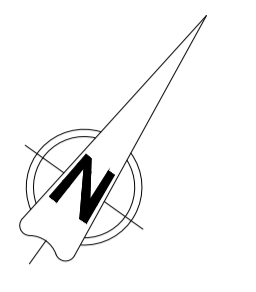
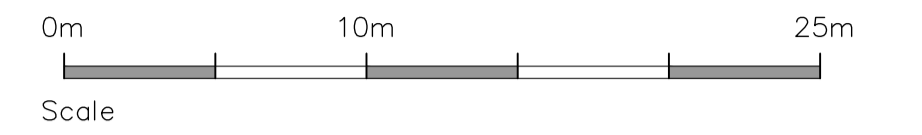


notes
 this drawing and design is the copyright of aja architects lp and must not be reproduced in part or in whole without prior written consent. contractors must verify all dimensions on site before commencing work or preparing shop drawings if in doubt ASK.
 Where this drawing contains any Ordnance Survey mapping material, it has been reproduced under license number 100052278.
 Ordnance Survey © Crown copyright



SCHEDULE OF ACCOMMODATION
 All areas are gross internal

Ground Floor		
Production / Warehouse / Storage	51,433 sq.ft.	(4,778 sq.m.)
Stair Cores	1,081 sq.ft.	(100 sq.m.)
(Entrance Area, Stair areas and services)		
First & Second Floor Offices	16,685 sq.ft.	(1,550 sq.m.)
Total	69,199 sq.ft.	(6,428 sq.m.)
Total Parking	100no. car spaces	
	20no. cycle spaces	
Site Area	2.81 acres approx.	
Haunch Height	12m	

A	19/6/18	Location of sub-station updated following site survey	up
no.	date	revision	by



aja architects lp
 1170 Elliott Court
 Herald Avenue
 Coventry Business Park
 COVENTRY CV5 6UB
 T: 024 7625 3200
 F: 024 7625 3210
 E: aja@aja-architects.com
 W: www.aja-architects.com

aja architects lp is a limited liability partnership registered in England No. OC326721
 client



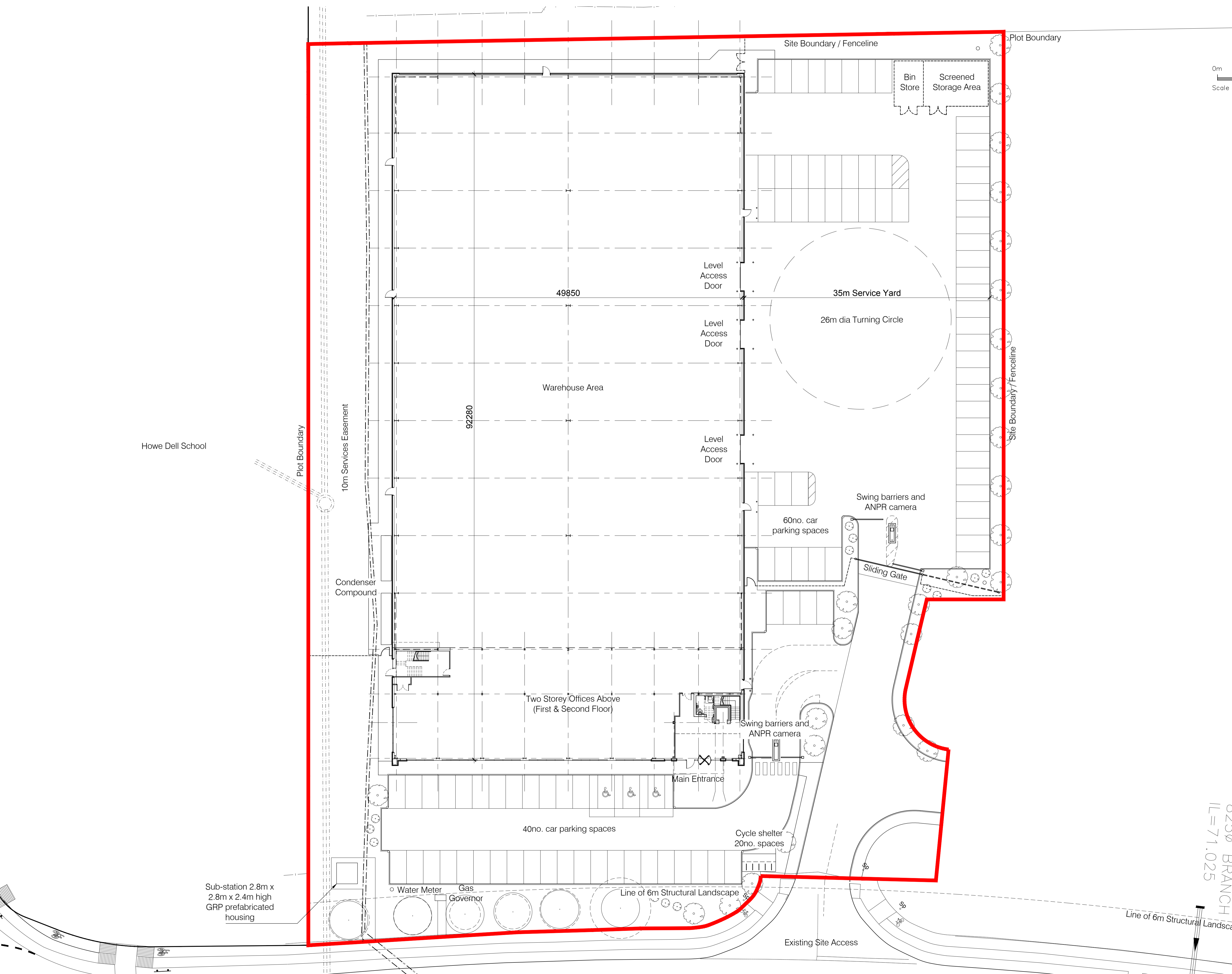
project
Proposed Unit
Plot 5000
Hatfield Business Park

drawing

Proposed Site Layout Plan

scale	1:250 @ A1	drawn up
checked	aro	date 16/03/18

no
6050 - 107 Rev A
PLANNING



0230 BRANCH
 IL=71.025

Howe Dell School

Sub-station 2.8m x 2.4m high GRP prefabricated housing

Water Meter Gas Governor

Line of 6m Structural Landscape

Existing Site Access

Line of 6m Structural Landscape