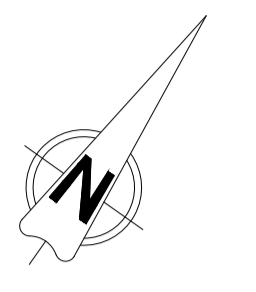
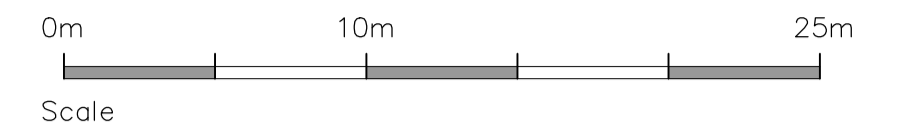
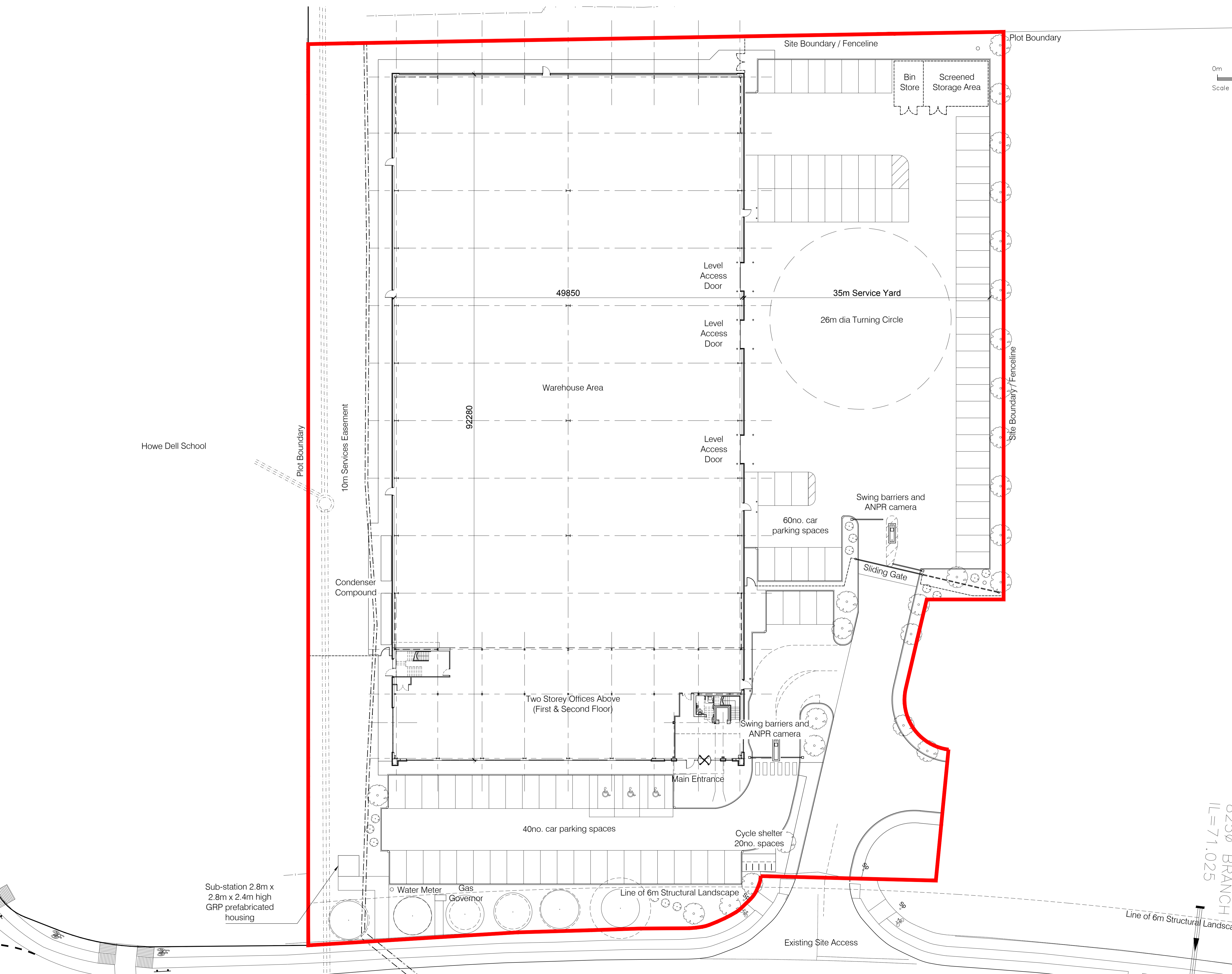


**notes**  
 this drawing and design is the copyright of aja architects llp and must not be reproduced in part or in whole without prior written consent. contractors must verify all dimensions on site before commencing work, or preparing shop drawings if in doubt ASK.  
 Where this drawing contains any Ordnance Survey mapping material, it has been reproduced under license number 100052278.  
 Ordnance Survey © Crown copyright



**SCHEDULE OF ACCOMMODATION**  
 All areas are gross internal

Ground Floor		
Production / Warehouse / Storage	51,433 sq.ft.	(4,778 sq.m.)
Stair Cores	1,081 sq.ft.	(100 sq.m.)
(Entrance Area, Stair areas and services)		
First & Second Floor Offices	16,685 sq.ft.	(1,550 sq.m.)
<b>Total</b>	<b>69,199 sq.ft.</b>	<b>(6,428 sq.m.)</b>
Total Parking	100no. car spaces	
	20no. cycle spaces	
Site Area	2.81 acres approx.	
Haunch Height	12m	



no.	date	revision	by



aja architects llp  
 1170 Elliott Court  
 Herald Avenue  
 Coventry Business Park  
 COVENTRY CV5 6UB  
 T: 024 7625 3200  
 F: 024 7625 3210  
 E: aja@aja-architects.com  
 W: www.aja-architects.com

aja architects llp is a limited liability partnership registered in England No. OC326721  
 client



project  
**Proposed Unit**  
**Plot 5000**  
**Hatfield Business Park**

drawing  
**Proposed Site Layout Plan**

scale	1:250 @ A1	drawn up
checked	aro	date 16/03/18

no  
**6050 - 107**  
**PLANNING**

02300 BRANCH  
 IL=71.025