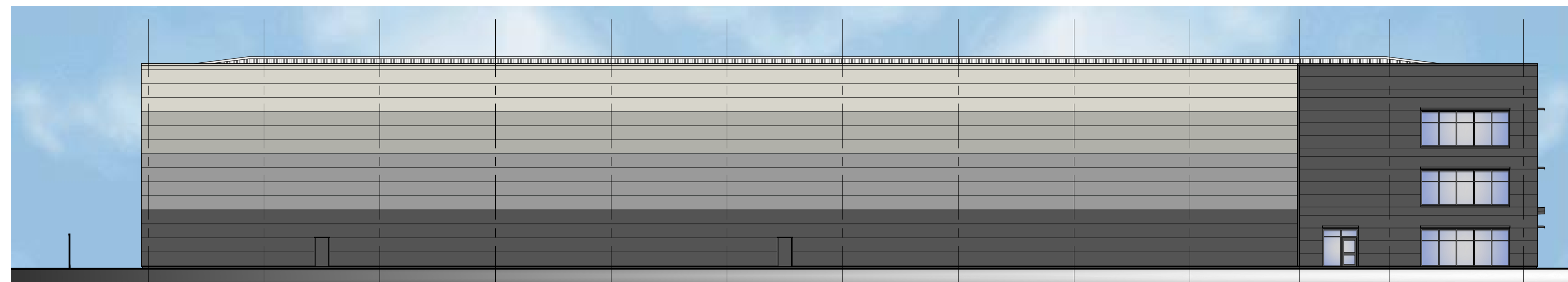
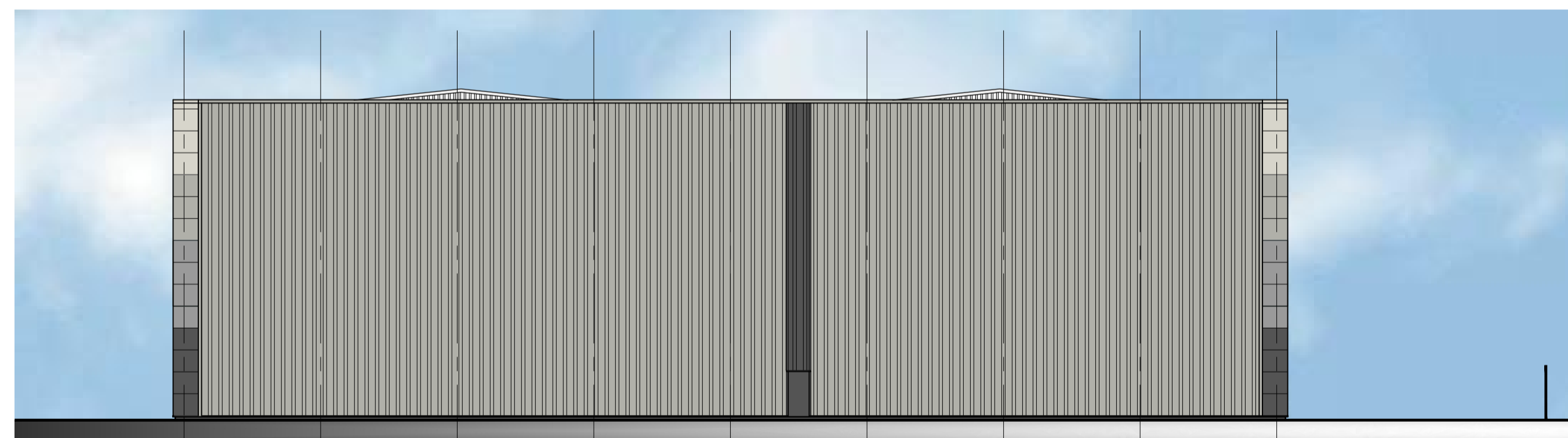


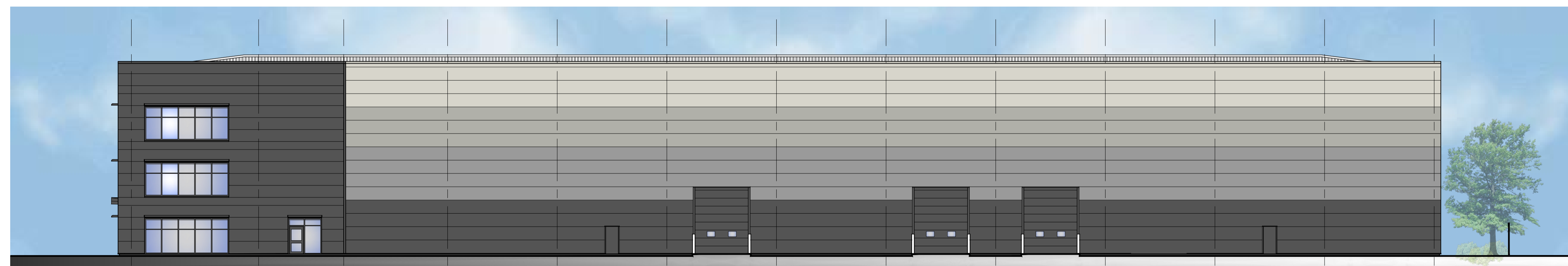
South Elevation  
(Front Elevation)



West Elevation  
(Side Elevation)

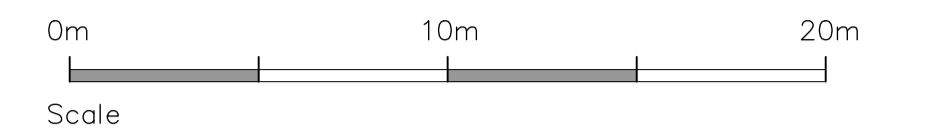


North Elevation  
(Rear Elevation)



East Elevation  
(Side Elevation)

**notes**  
this drawing and design is the copyright of aja architects llp and must not be reproduced in part or in whole without prior written consent. contractors must verify all dimensions on site before commencing work or preparing shop drawings if in doubt ASK.  
Where this drawing contains any Ordnance Survey mapping material, it has been reproduced under license number 100052278.  
Ordnance Survey © Crown copyright



**Schedule of Materials**

- Offices Elevation**
- 1 - Preformed Flat Composite Cladding to projecting building outline, Colour - Anthracite RAL 7016
  - 2 - Flat Horizontal Composite Cladding, Colour - Anthracite RAL 7016
  - 3 - Flat Horizontal Composite Cladding System to Front Elevation, Colour - Merlin Grey RAL 180 40 05
  - 5 - Polyester Powder Coated Aluminium DG Windows  
Curtain Walling & Doors, Frame Colour - Anthracite RAL 7016
  - 6 - Glazed Entrance Canopy, Colour - Anthracite RAL 7016
  - 7 - Polyester Powder Coated Brise Soleil Colour - Anthracite RAL 7016
  - 8 - External Louvres - Colour to match cladding
- Side Elevations - Warehouse (low to high horizontally spanning panels)**
- 9 - Microrib composite panel - Colour Dark Grey Anthracite RAL 7016
  - 10 - Microrib composite panel - Colour Merlin grey RAL 180 40 05
  - 11 - Microrib composite panel - Colour Goosewing Grey RAL 7038
  - 12 - Microrib composite panel - Colour Grey White/Hamlet RAL 9002
- Rear Elevation - Warehouse**
- 13 - Vertically Spanning Built Up Trapezoidal Cladding  
Colour: Goosewing Grey RAL 7038 & Anthracite RAL 7016
  - 14 - Built up Roof Cladding Colour - Albatross RAL 240 80 05
  - 15 - Painted Steel FE Doors - Anthracite RAL 7016
  - 16 - Insulated electrically operated Loading Doors  
Colour - Anthracite RAL 7016

no.	date	revision	by
-----	------	----------	----



aja architects llp  
1170 Elliott Court  
Herald Avenue  
Coventry Business Park  
COVENTRY CV5 6UB  
T: 024 7625 3200  
F: 024 7625 3210  
E: aja@aja-architects.com  
W: www.aja-architects.com

aja architects llp is a limited liability partnership registered in England No. OC326721

client



project

**Proposed Unit**  
**Plot 5000**  
**Hatfield Business Park**

drawing

**Proposed Elevations**

scale 1:200 @ A1 drawn up

checked aro date 31/07/17

no

**6050 - 104**