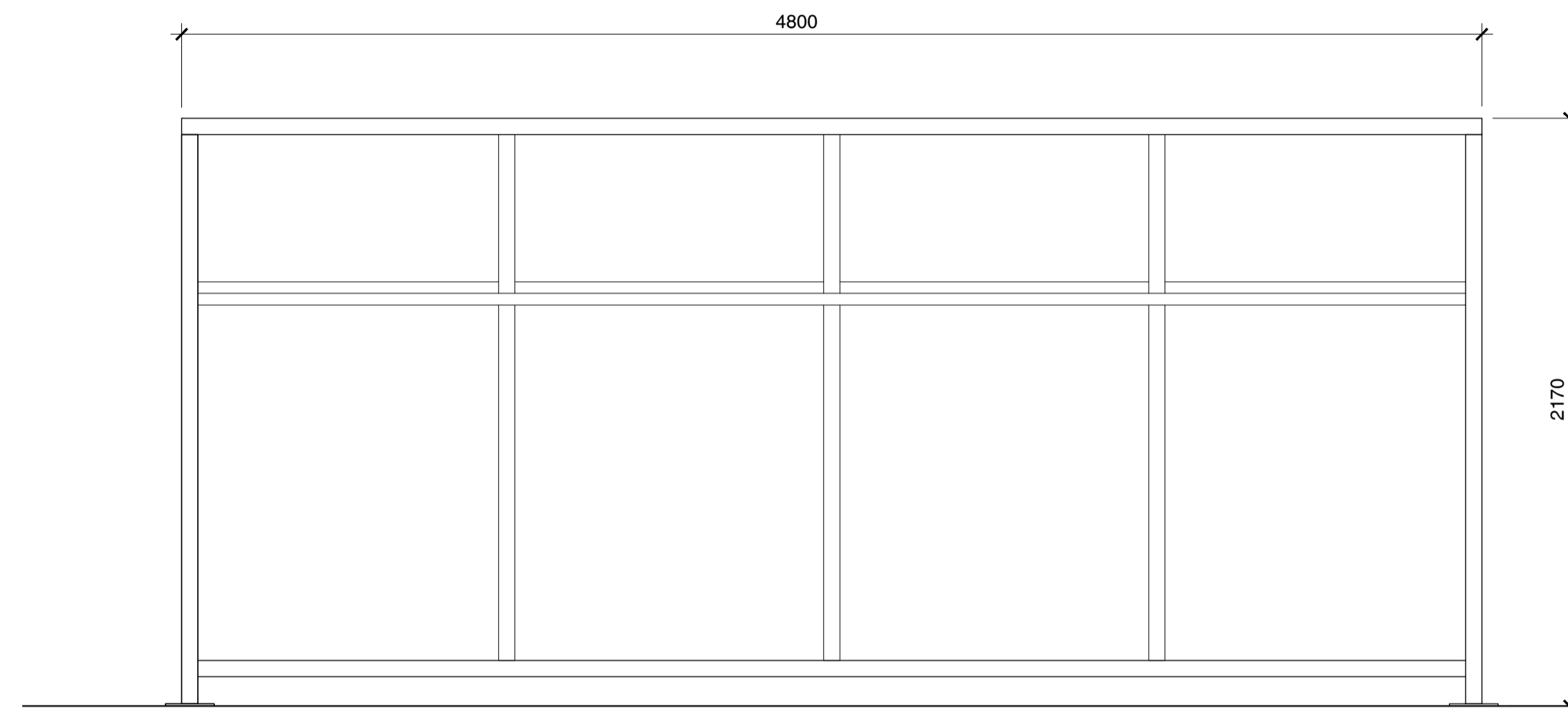
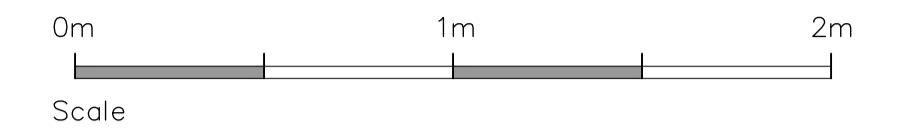
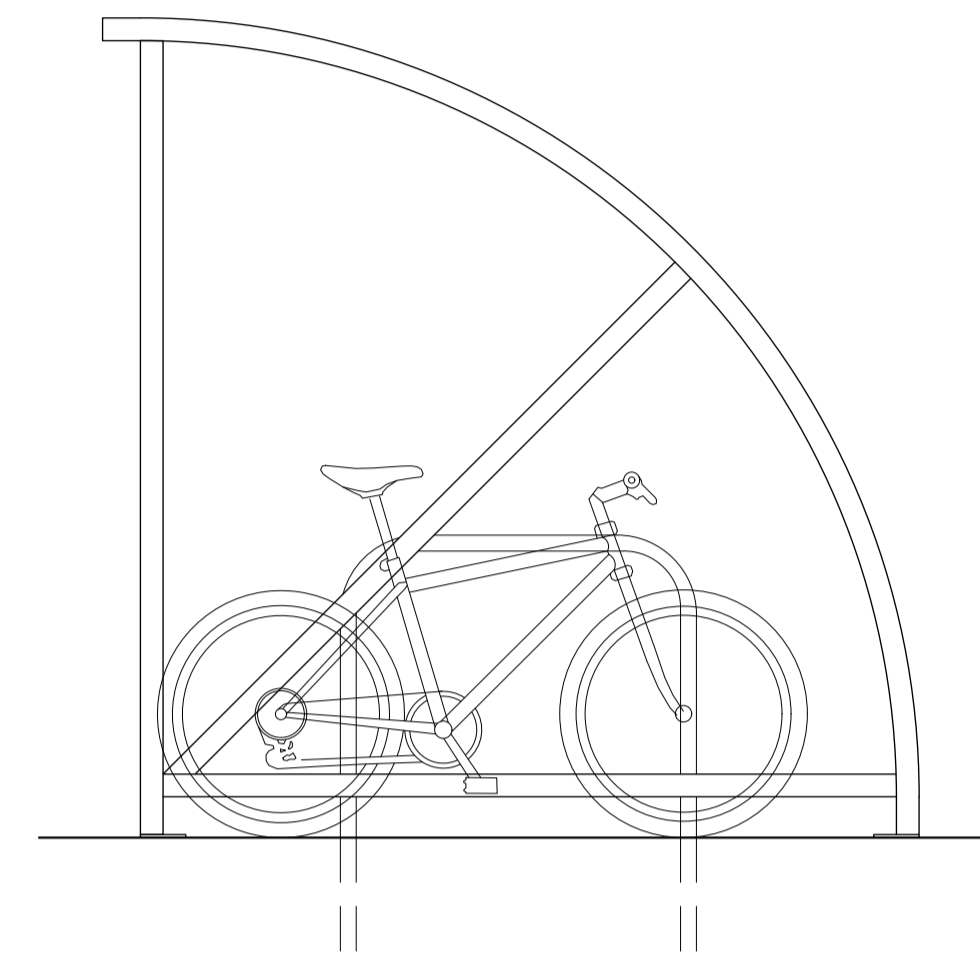


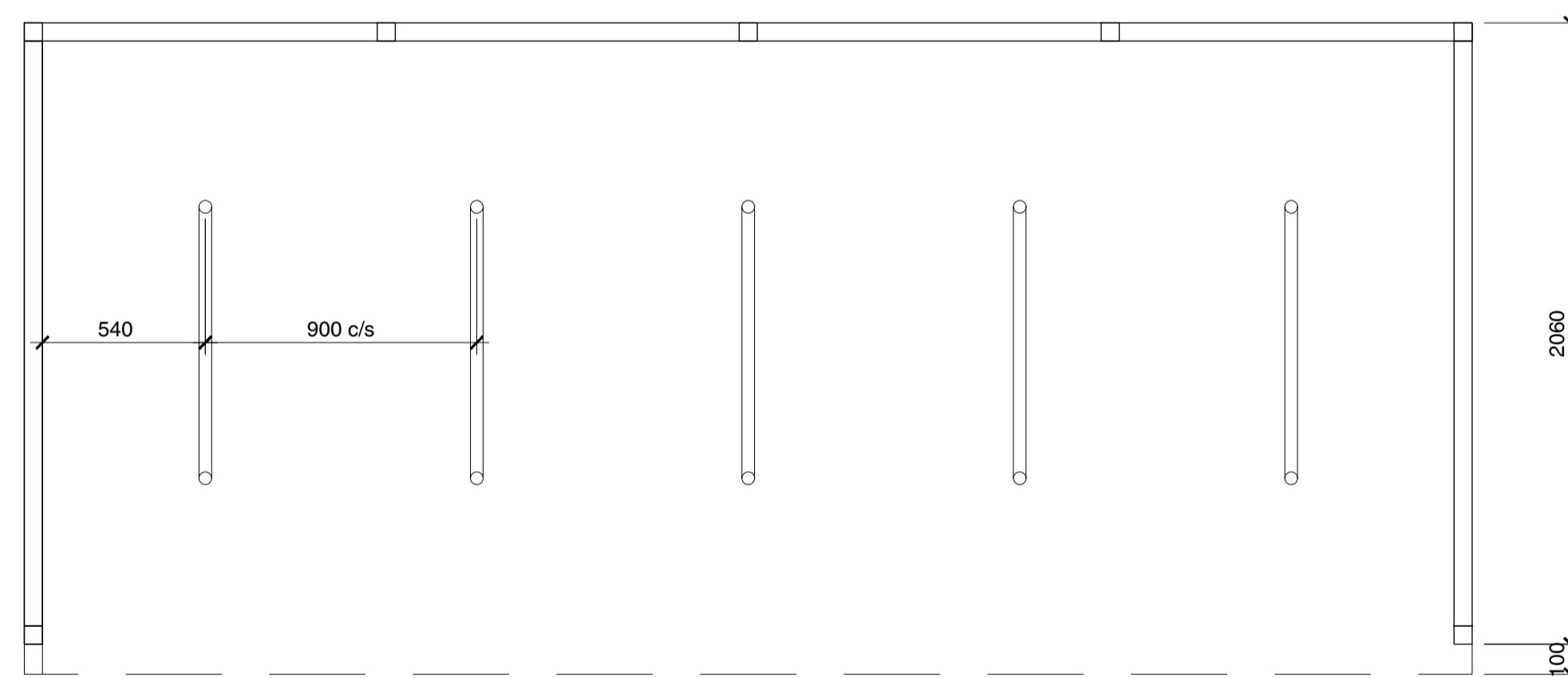
notes  
 this drawing and design is the copyright of aja architects llp and must not be reproduced in part or in whole without prior written consent. contractors must verify all dimensions on site before commencing work or preparing shop drawings. If in doubt! ASK.  
 Where this drawing contains any Ordnance Survey mapping material, it has been reproduced under license number 100052276. Ordnance Survey © Crown copyright!



FRONT ELEVATION



END ELEVATION



PLAN

Standard Hoop Layout (10 No. Cycles)

**CYCLE SHELTERS**

(1no. shelter required for 10no. cycles in total)

**SPECIFICATION FOR SHELTER:**

Frame of heavy duty galv SHS steel frame with clear polycarbonate glazing to roof and ends.

Sheffield cycle stand size 41.5 mmØ x 900mm long x 800mm high plus 300mm set below ground. Stands set out as indicated.

Cycle shelters to be adequately lit in accordance with BS 5489 Pt 1 - Lighting of Roads and Amenity Areas

| no. | date     | revision        | by |
|-----|----------|-----------------|----|
| A   | 06/04/17 | Scale bar added | up |



aja architects llp  
 1170 Elliott Court  
 Herald Avenue  
 Coventry Business Park  
 COVENTRY CV5 6UB  
 T: 024 7625 3200  
 F: 024 7625 3210  
 E: aja@aja-architects.com  
 W: www.aja-architects.com

aja architects llp is a limited liability partnership registered in England No. OC326721

client



project

Proposed Unit  
 Plot 5000  
 Hatfield Business Park

drawing

Proposed Cycle Shelter

scale 1:20 @ A1 drawn up

checked spp date 24/03/17

no

6050 - 095 Rev A  
 PLANNING