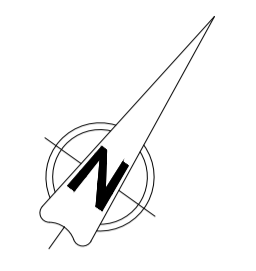
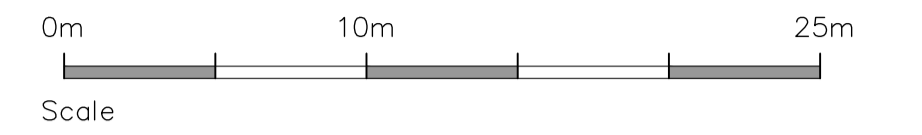


notes  
 this drawing and design is the copyright of aja architects lp and must not be reproduced in part or in whole without prior written consent. contractors must verify all dimensions on site before commencing work or preparing shop drawings if in doubt ASK.  
 Where this drawing contains any Ordnance Survey mapping material, it has been reproduced under license number 10052278.  
 Ordnance Survey © Crown copyright



SCHEDULE OF ACCOMMODATION  
 All areas are gross internal

Ground Floor		
Production / Warehouse / Storage	51,433 sq.ft.	(4,778 sq.m.)
Stair Cores		
(Entrance Area, Stair areas and services)	1,081 sq.ft.	(100 sq.m.)
First & Second Floor Offices	16,685 sq.ft.	(1,550 sq.m.)
<b>Total</b>	<b>69,199 sq.ft.</b>	<b>(6,428 sq.m.)</b>
Total Parking	100no. car spaces	
	20no. cycle spaces	
Site Area	2.98 acres approx.	
Haunch Height	12m	

B	31/07/17	Number of cycles spaces revised	up
A	06/04/17	Scale bar added	up
no.	date	revision	by



aja architects lp  
 1170 Elliott Court  
 Herald Avenue  
 Coventry Business Park  
 COVENTRY CV5 6UB  
 T: 024 7625 3200  
 F: 024 7625 3210  
 E: aja@aja-architects.com  
 W: www.aja-architects.com

aja architects lp is a limited liability partnership registered in England No. OC326721  
 client

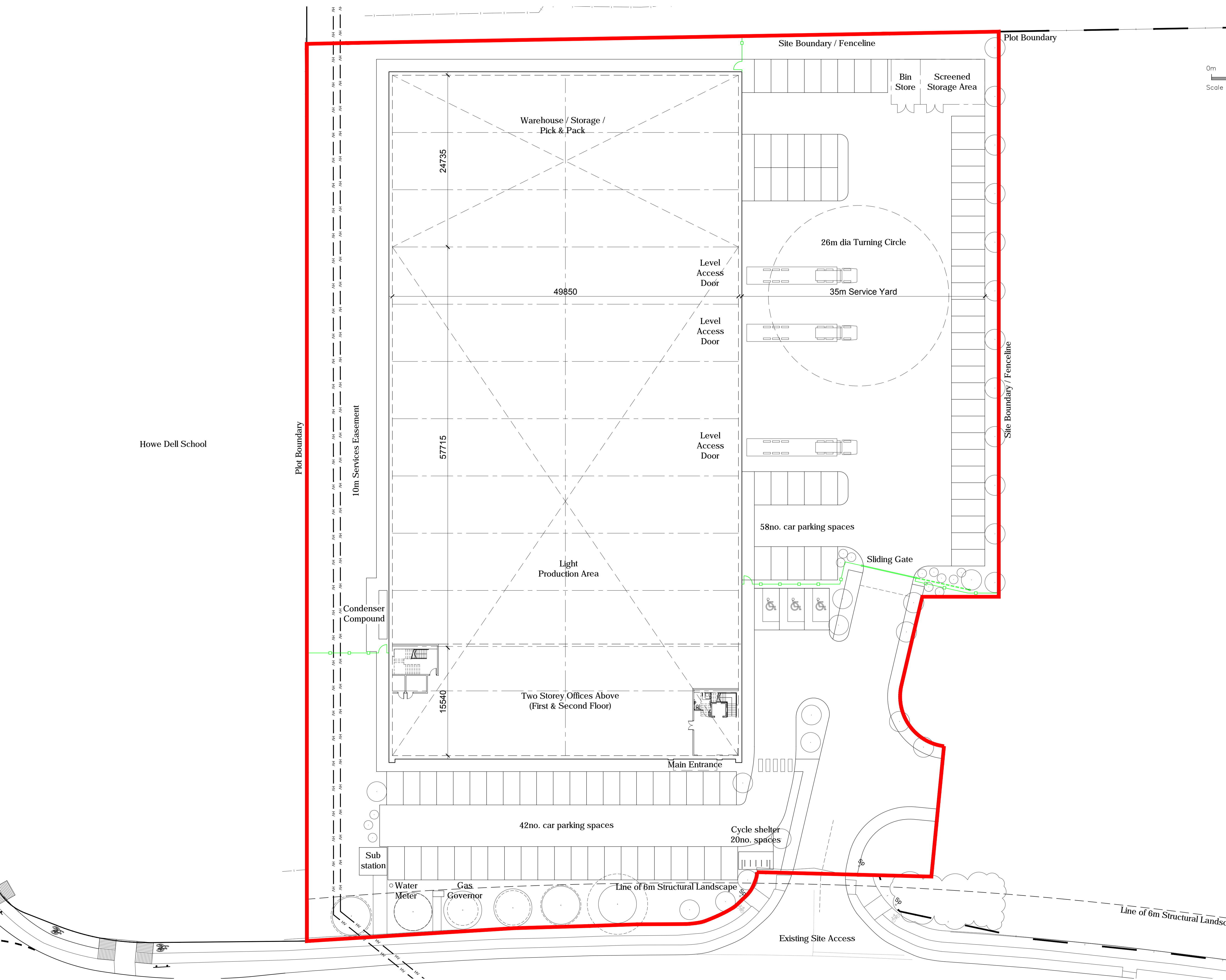


project  
**Proposed Unit**  
**Plot 5000**  
**Hatfield Business Park**

drawing  
**Proposed Site Layout Plan**

scale 1:250 @ A1 drawn up  
 checked spp date 24/03/17

no  
**6050 - 087 Rev B**  
**PLANNING**



Howe Dell School

Plot Boundary

10m Services Easement

Site Boundary / Fenceline

Plot Boundary

Site Boundary / Fenceline

Existing Site Access

Line of 6m Structural Landsc