

| TREE SCHEDULE | | | | |
|---------------|---------|--------|--------|----------------|
| No. | DIAM. | SPREAD | HEIGHT | TYPE |
| 1 | 0.15 | 6 | 8 | SYCAMORE |
| 2 | 0.15 | 6 | 8 | SYCAMORE |
| 3 | 0.15 | 4 | 10 | ASH |
| 4 | 0.65 | 10 | 18 | SYCAMORE |
| 5 | 0.2 | 8 | 15 | SYCAMORE |
| 6 | 0.25 2B | 10 | 16 | SYCAMORE |
| 7 | 0.15 | 8 | 12 | SYCAMORE |
| 8 | 0.2 | 6 | 18 | ASH |
| 9 | 0.15 | 8 | 16 | ASH |
| 10 | 0.25 | 8 | 15 | BEECH |
| 11 | 0.15 | 6 | 12 | SYCAMORE |
| 12 | 0.2 | 7 | 13 | SYCAMORE |
| 13 | 0.2 | 7 | 13 | SYCAMORE |
| 14 | 0.8 | 16 | 17 | BEECH |
| 15 | 0.15 | 10 | 12 | SYCAMORE |
| 16 | 0.15 | 8 | 12 | SYCAMORE |
| 17 | 0.15 2B | 8 | 12 | SYCAMORE |
| 18 | 0.3 | 8 | 17 | ASH |
| 19 | 0.25 | 12 | 17 | HORNBEAM |
| 20 | 0.25 | 9 | 15 | ASH |
| 21 | 0.7 | 15 | 16 | SYCAMORE |
| 22 | 0.25 | 9 | 12 | ASH |
| 23 | 0.3 | 15 | 17 | HORSE CHESTNUT |
| 24 | 0.8 | 14 | 18 | HORSE CHESTNUT |
| 25 | 0.25 | 8 | 15 | HORSE CHESTNUT |
| 26 | 0.25 2B | 10 | 12 | SYCAMORE |
| 27 | 0.7 | 14 | 17 | BEECH |
| 28 | 0.35 | 5 | 20 | PINE |
| 29 | 0.6 | 6 | 20 | PINE |
| 30 | 0.6 | 6 | 20 | PINE |
| 31 | 0.25 3B | 10 | 12 | SYCAMORE |
| 32 | 0.5 4B | 18 | 20 | ASH |
| 33 | 0.3 | 10 | 10 | SYCAMORE |
| 34 | 0.4 | 10 | 20 | ASH |
| 35 | 0.45 2B | 18 | 20 | SYCAMORE |
| 36 | 0.9 | 18 | 20 | ASH |
| 37 | 0.6 | 14 | 20 | SYCAMORE |
| 38 | 0.6 | 15 | 20 | SYCAMORE |
| 39 | 0.7 | 17 | 22 | SYCAMORE |
| 40 | 0.6 | 16 | 20 | SYCAMORE |
| 41 | 0.4 | 10 | 12 | SYCAMORE |
| 42 | 0.6 2B | 20 | 20 | SYCAMORE |
| 43 | 0.4 2B | 20 | 20 | SYCAMORE |
| 44 | 0.5 2B | 16 | 22 | SYCAMORE |
| 45 | 0.8 | 15 | 20 | HORSE CHESTNUT |
| 46 | 0.4 | 6 | 15 | SPRUCE TPO 113 |
| 47 | 0.35 | 7 | 18 | FIR TPO 112 |
| 48 | 1.5 | 15 | 22 | HORSE CHESTNUT |
| 49 | 1.0 | 18 | 20 | HORSE CHESTNUT |
| 50 | 0.4 | 8 | 10 | ASH |
| 51 | 0.2 | 7 | 12 | ASH |

ZONE A

Due to the high risk to public health and or structural damage all trees marked upon the plan for exclusion are to be removed from the site prior to building work commencing.

These are:

Trees's no 3,8,9,18,20 & 22 Ash, 4,5,6,7,15,16,17&21 Sycamore,10, 14&27 beech, 19,23,24,25 &45 horse chestnut.

Following removal of the tree and root debris from the site the remaining trees are to be selectively thinned to improve canopy space and structure. any open areas are to be planted at close spacing using a mixture of local sourced trees. species to include; Hornbeam, Rowan, Field maple, Hazel, Holly, Crab Apple& Blackthorn. approximate number of trees to be planted:minimum 40/max 50. The site is to have a number of bird and bat boxes erected and will receive an annual programme of maintenance work from then on.

ZONE B

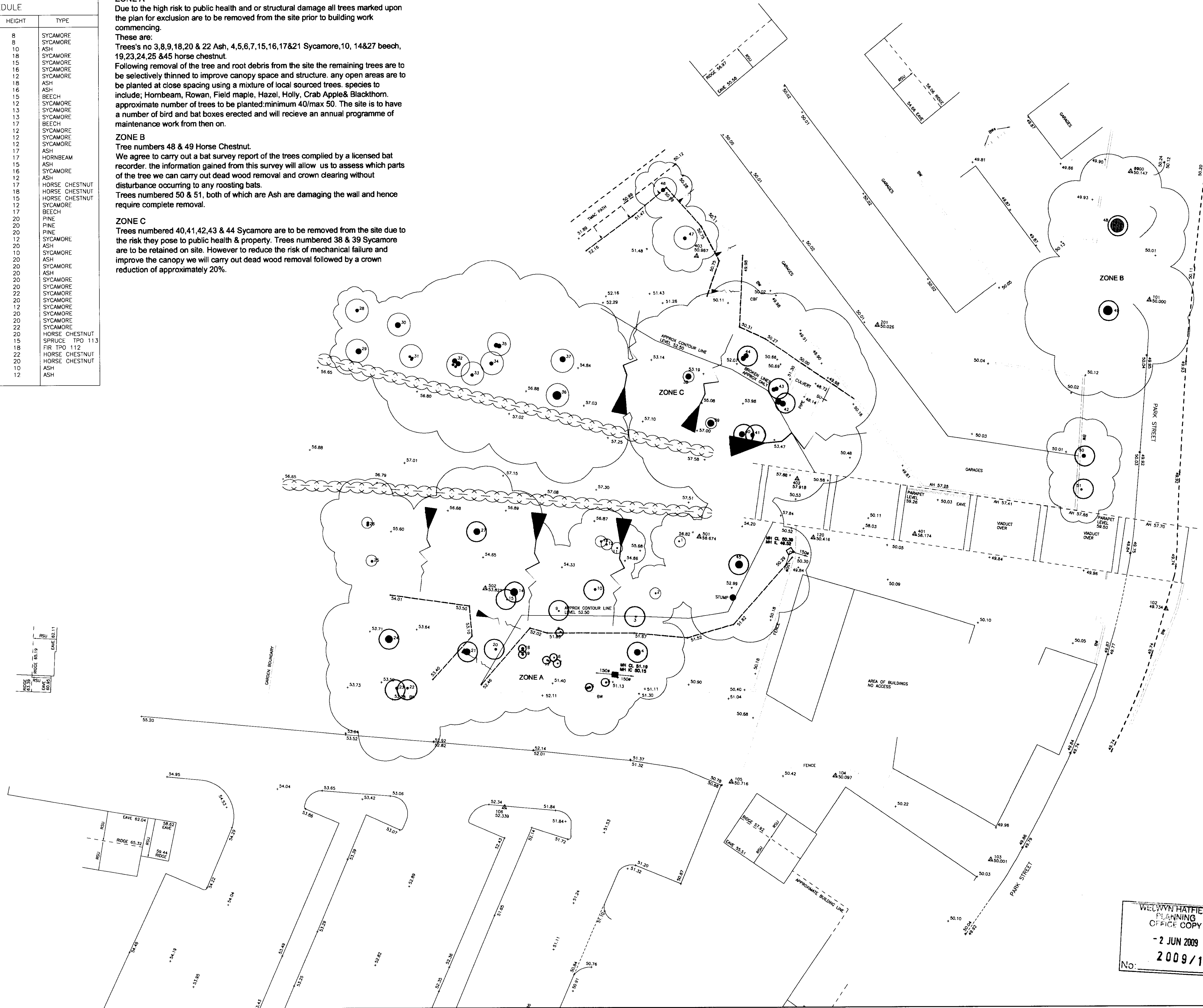
Tree numbers 48 & 49 Horse Chestnut.

We agree to carry out a bat survey report of the trees compiled by a licensed bat recorder. the information gained from this survey will allow us to assess which parts of the tree we can carry out dead wood removal and crown clearing without disturbance occurring to any roosting bats.

Trees numbered 50 & 51, both of which are Ash are damaging the wall and hence require complete removal.

ZONE C

Trees numbered 40,41,42,43 & 44 Sycamore are to be removed from the site due to the risk they pose to public health & property. Trees numbered 38 & 39 Sycamore are to be retained on site. However to reduce the risk of mechanical failure and improve the canopy we will carry out dead wood removal followed by a crown reduction of approximately 20%.



USE FIGURED DIMENSIONS ONLY
DO NOT SCALE FROM THIS DRAWING
ALL DIMENSIONS MUST BE CHECKED ON SITE ANY
INCONSISTENCIES MUST BE REPORTED BACK TO THE ARCHITECT
THIS DRAWING AND ANY DESIGNS INDICATED THEREON ARE THE
COPYRIGHT OF BROOKS / MURRAY ARCHITECTS
ALL RIGHTS ARE RESERVED
NO PART OF THIS WORK MAY BE PRODUCED WITHOUT PRIOR
PERMISSION IN WRITING FROM BROOKS / MURRAY ARCHITECTS

B Zones added 28.05.09
A tree plan added 04.03.09
Rev amendment Date

BROOKS / MURRAY

ARCHITECTS
8-10 NEW NORTH PLACE
LONDON EC2A 4JA
TEL 020 7739 9865
FAX 020 7739 9844
architects@brooksmurray.com

CLIENT:
GASCOYNE CECIL ESTATES

JOB:
DUNHAMS COURTYARD

DATE: Feb 2008 SCALE: A1/A3 1:200/1:400
DRAWING TITLE:
Existing site plan

DRAWING NUMBER:
578-BC-00 Rev B

WELWYN HATFIELD
PLANNING
OFFICE COPY
- 2 JUN 2009
2009/1123
No: