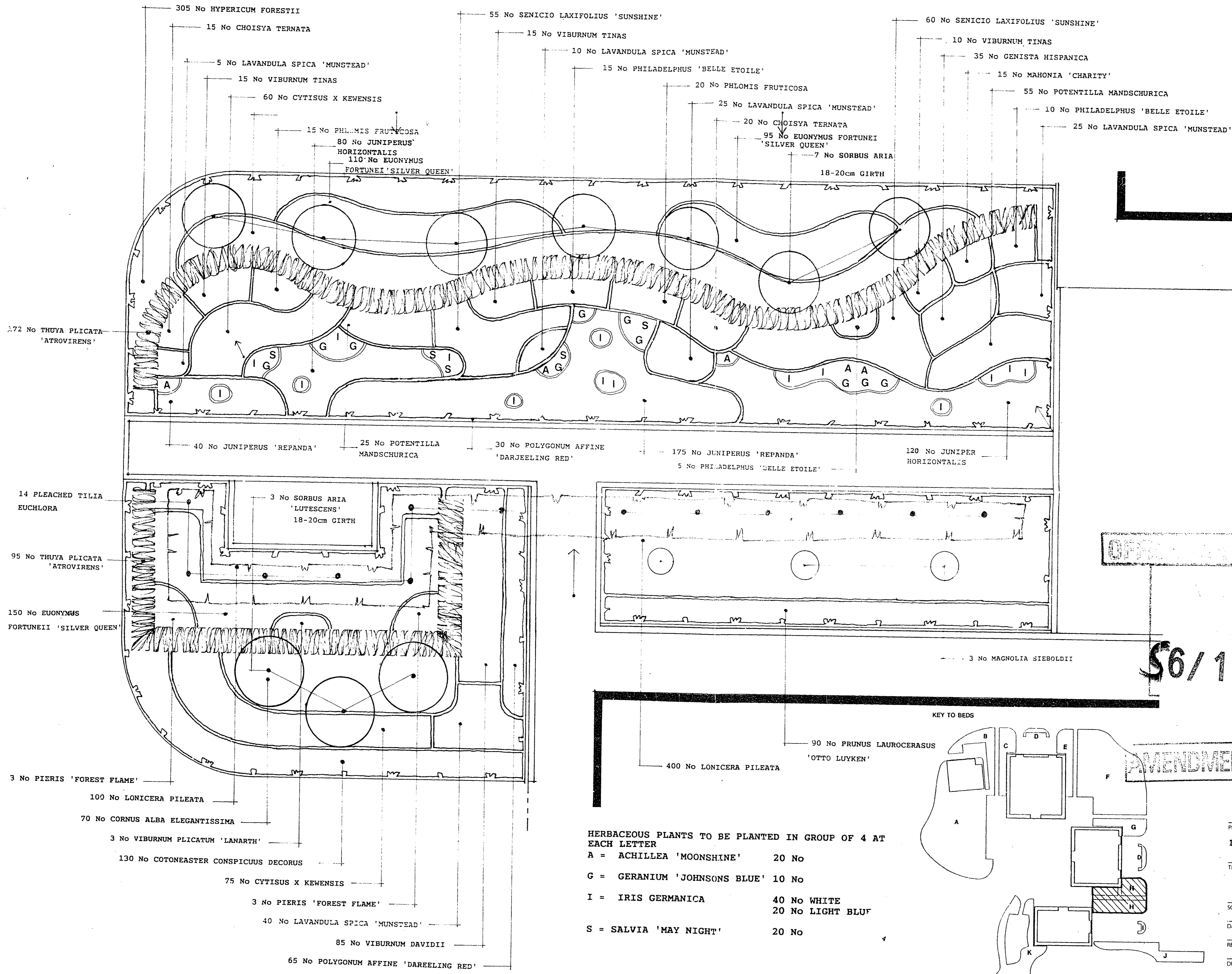


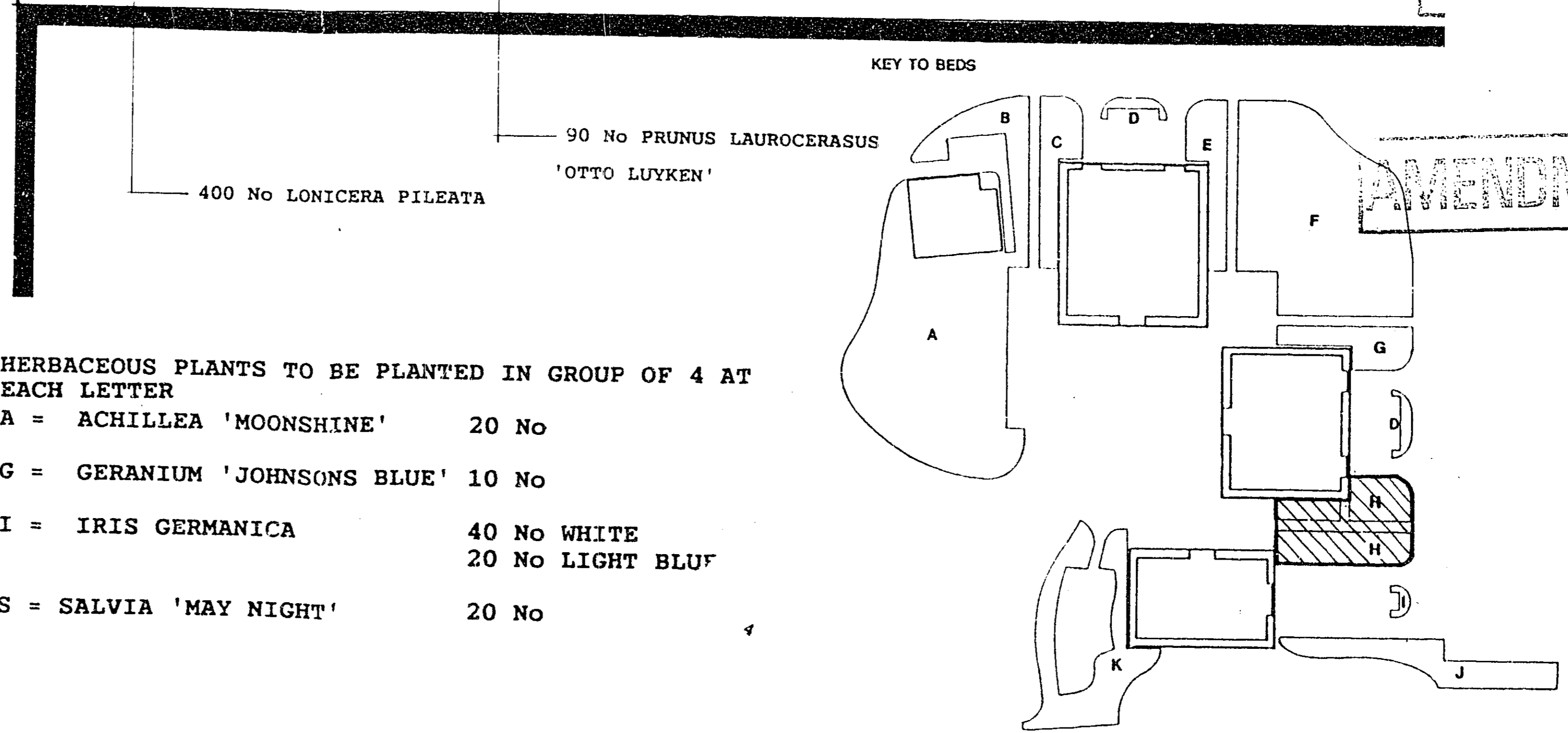
PLANNING FILES COMET WAY, HATFIELD. S6/161/89 3/7



DATE

28 JUL 1989

\$6/161/89



- HERBACEOUS PLANTS TO BE PLANTED IN GROUP OF 4 AT EACH LETTER
- A = ACHILLEA 'MOONSHINE' 20 No
  - G = GERANIUM 'JOHNSONS BLUE' 10 No
  - I = IRIS GERMANICA 40 No WHITE  
20 No LIGHT BLUE
  - S = SALVIA 'MAY NIGHT' 20 No



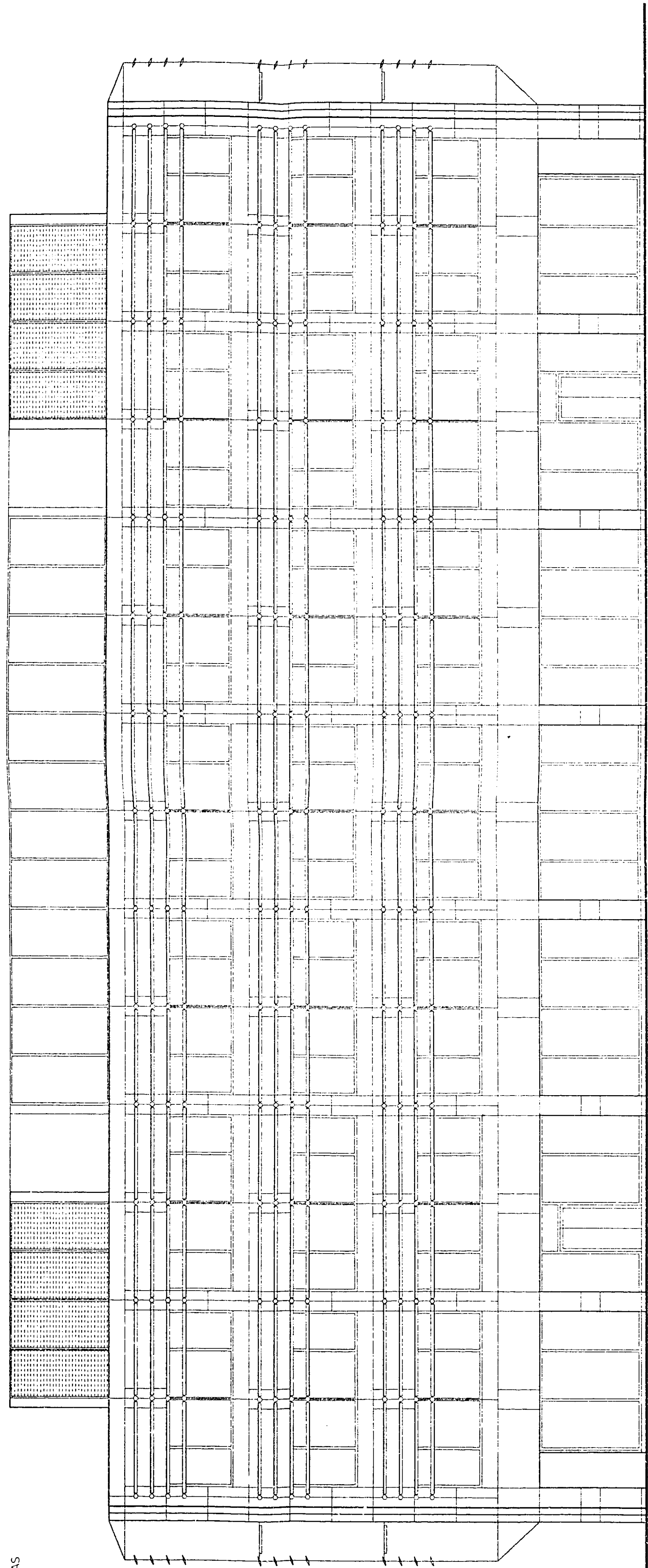
LANDSCAPE ARCHITECTS · ARCHITECTS · PLANNING CONSULTANTS  
 BUSH HOUSE · 72 PRINCE STREET · BRISTOL BS1 4RJ  
 TELEPHONE 0272 290651 · TELEX 449205 BUSHG · FACSIMILE 0272 226661

PROJECT  
 Bae COMET DEVELOPMENT HATFIELD

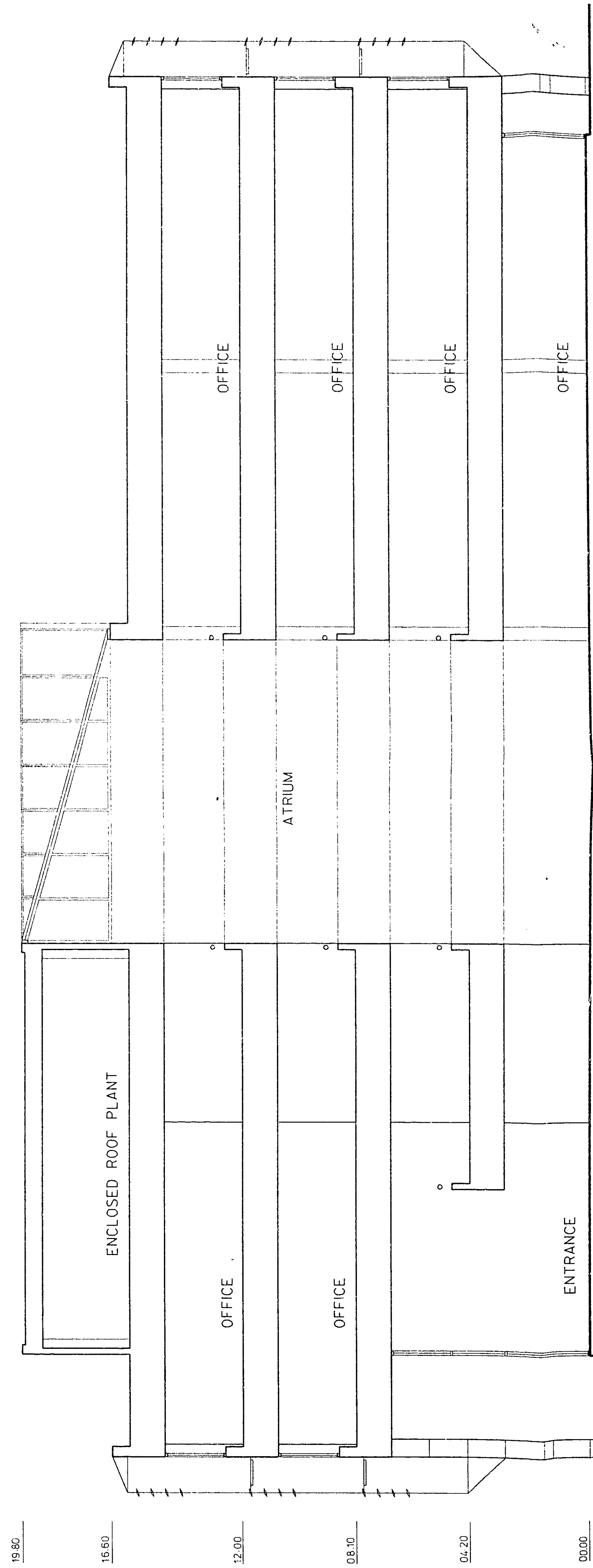
TITLE  
**BED H PLANTING PLAN**

SCALE 1:100 DRAWN BY  
 DATE JULY 1989 CHECKED  
 REVISION  
 DRAWING NUMBER  
 B86 C108

MATERIAL NOTES AS EAST ELEVATION



W E S T E L E V A T I O N



OFFICE COPY

15 FEB 1989

18/09/89

E A S T W E S T S E C T I O N

B U I L D I N G C

C O M M E N T D E V E L O P M E N T

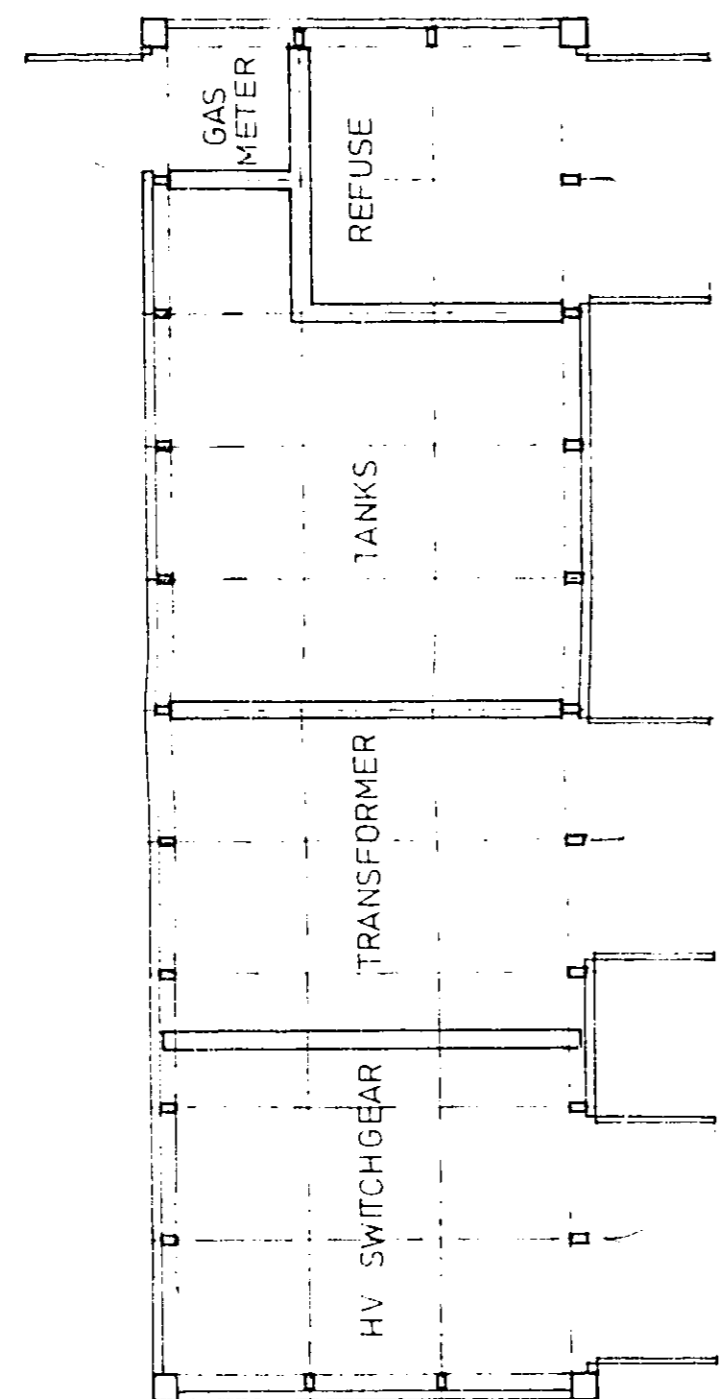
B Y A R M

A R C H I T E C T S A N D P L A N N E R S  
F E B R U A R Y 1 9 8 9

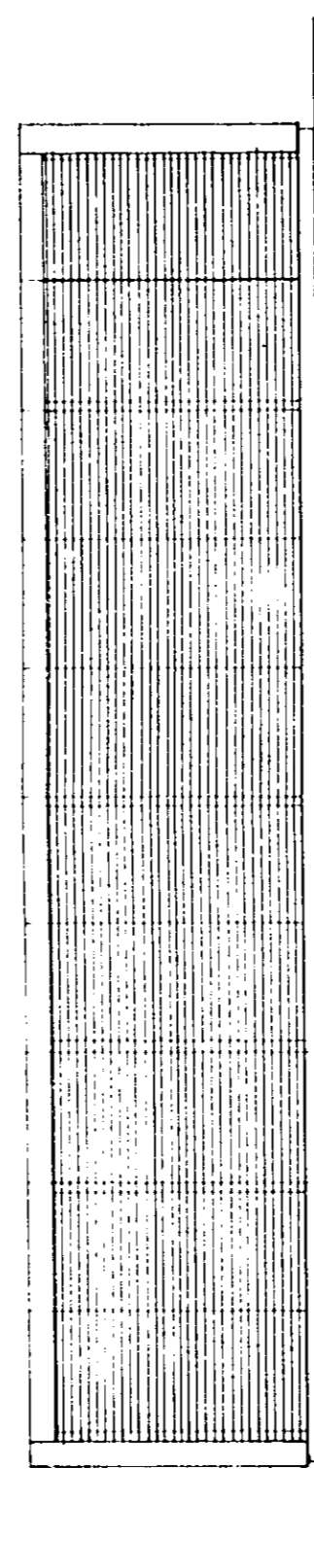
POB 08/02/89

WELWYN HATFIELD DC  
26 MAY 1989

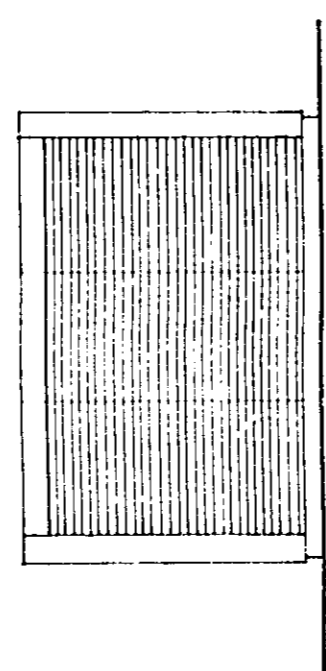
1:00



P L A N



E L E V A T I O N S



E X T E R N A L S E R V I C E M O D U L E

C O M M E N T D E V E L O P M E N T  
 B Y A E M  
 A R C H I T E C T S A N D P L A N N E R S  
 F E B R U A R Y 1 9 8 9

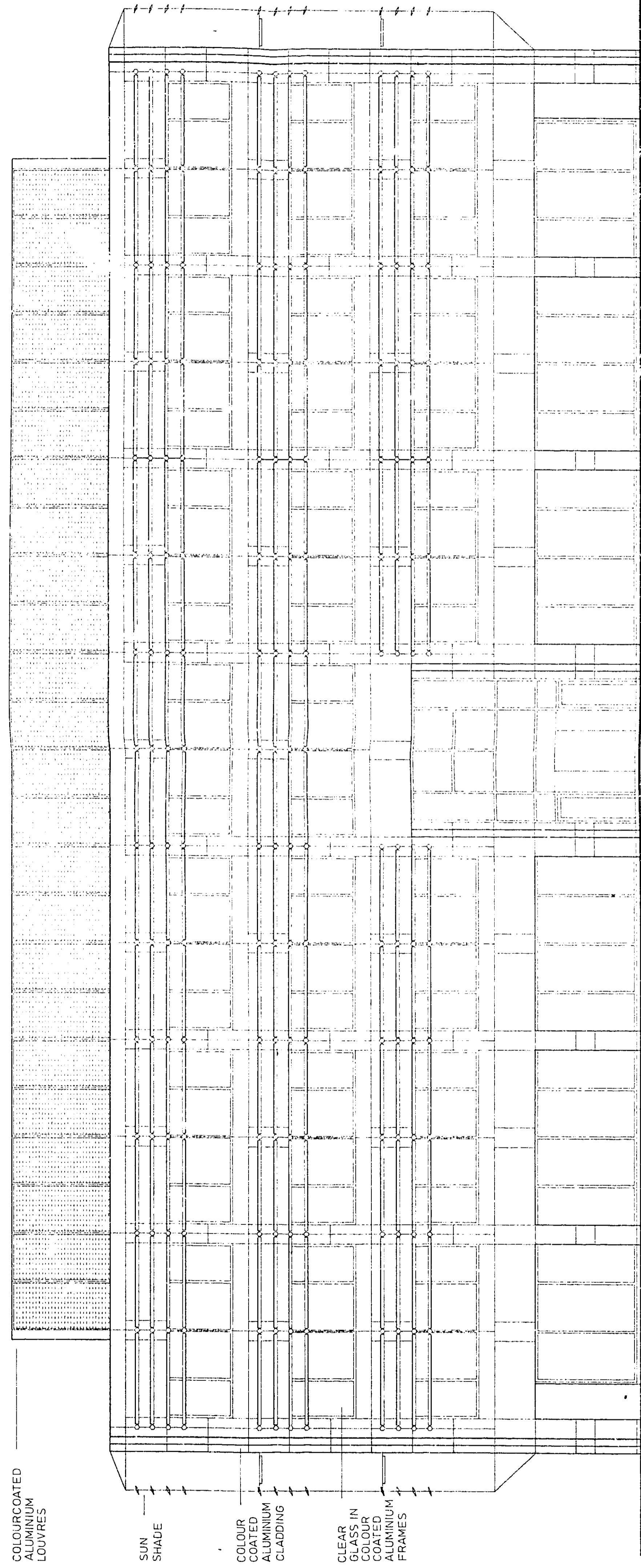
OFFICE COPY

15 FEB 1989  
 6/161/89

WELVIN HARTLEY D.C.  
 96 MAY 1989

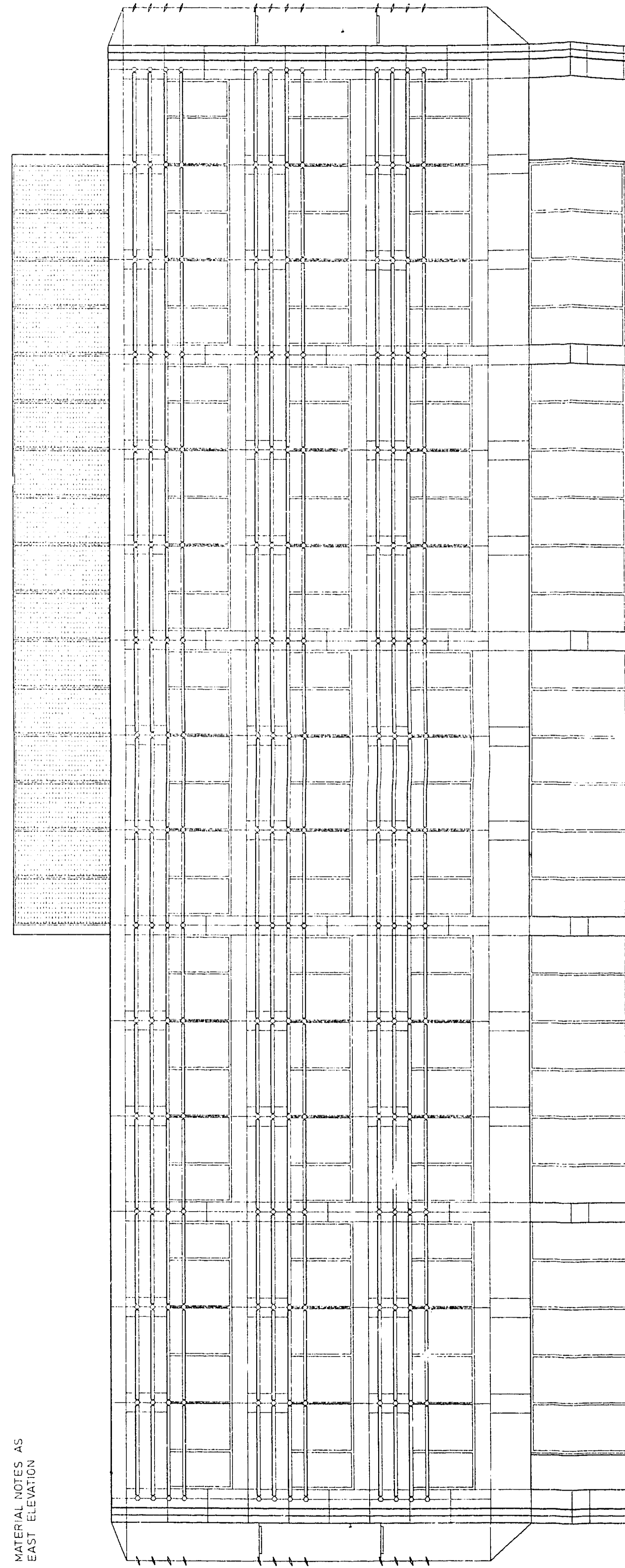
P022  
 08.02.89

H100



E A S T E L E V A T I O N

MATERIAL NOTES AS EAST ELEVATION



OFFICE COPY

105 FEB 1989

07101/89

MELVIN HATFIELD DC  
26 JAN 1989

PO20  
08/02/89

S O U T H E L E V A T I O N  
N O R T H E L E V A T I O N S I M I L A R

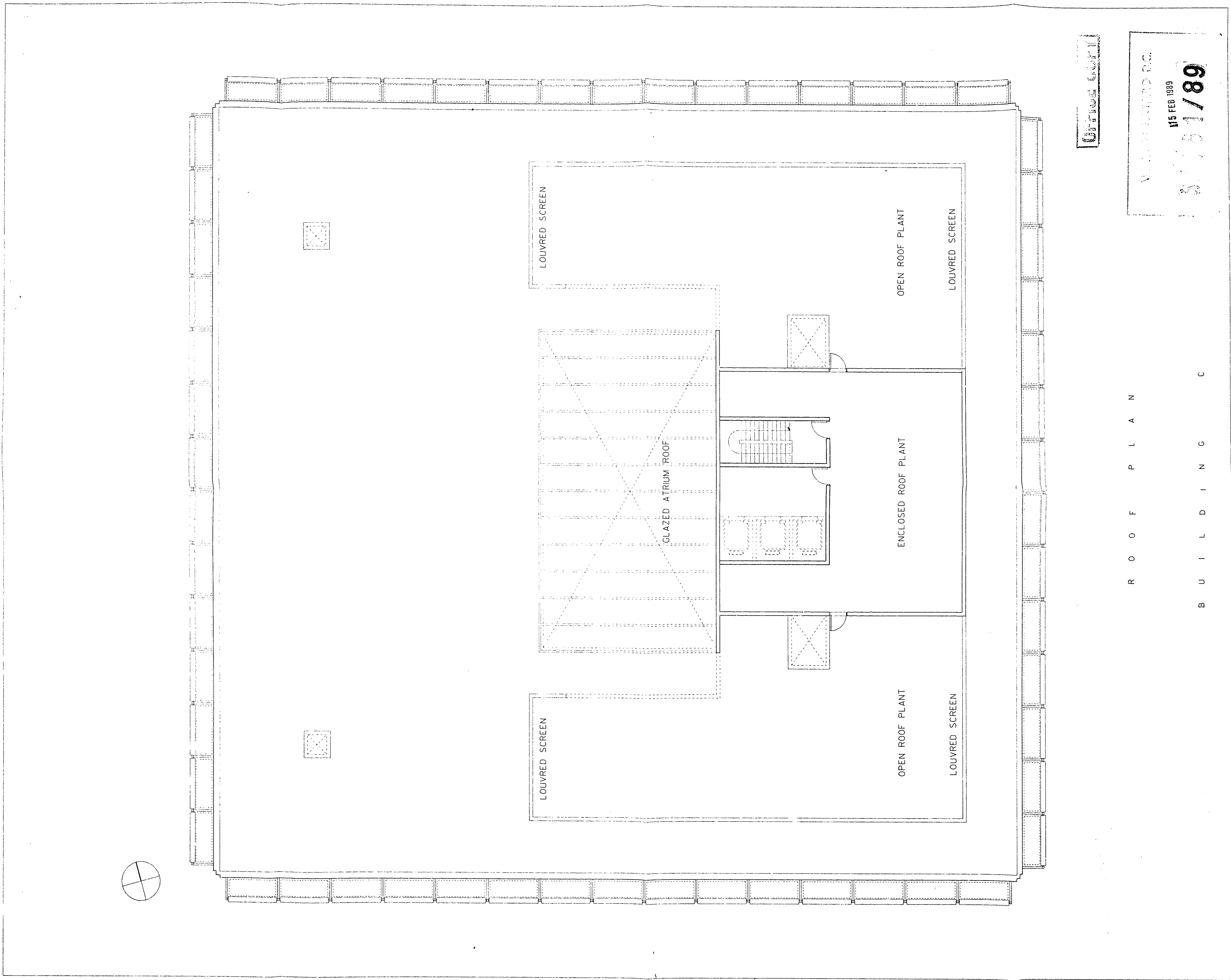
B U I L D I N G C

C O M E T D E V E L O P M E N T

B A E M

A R C H I T E C T S A N D P L A N N E R S  
F E B R U A R Y 1 9 8 9

1/00



DRIVE COPY

WILSON HATFIELD DC  
 115 FEB 1989  
 8701/89

R O O F P L A N  
 B U I L D I N G C

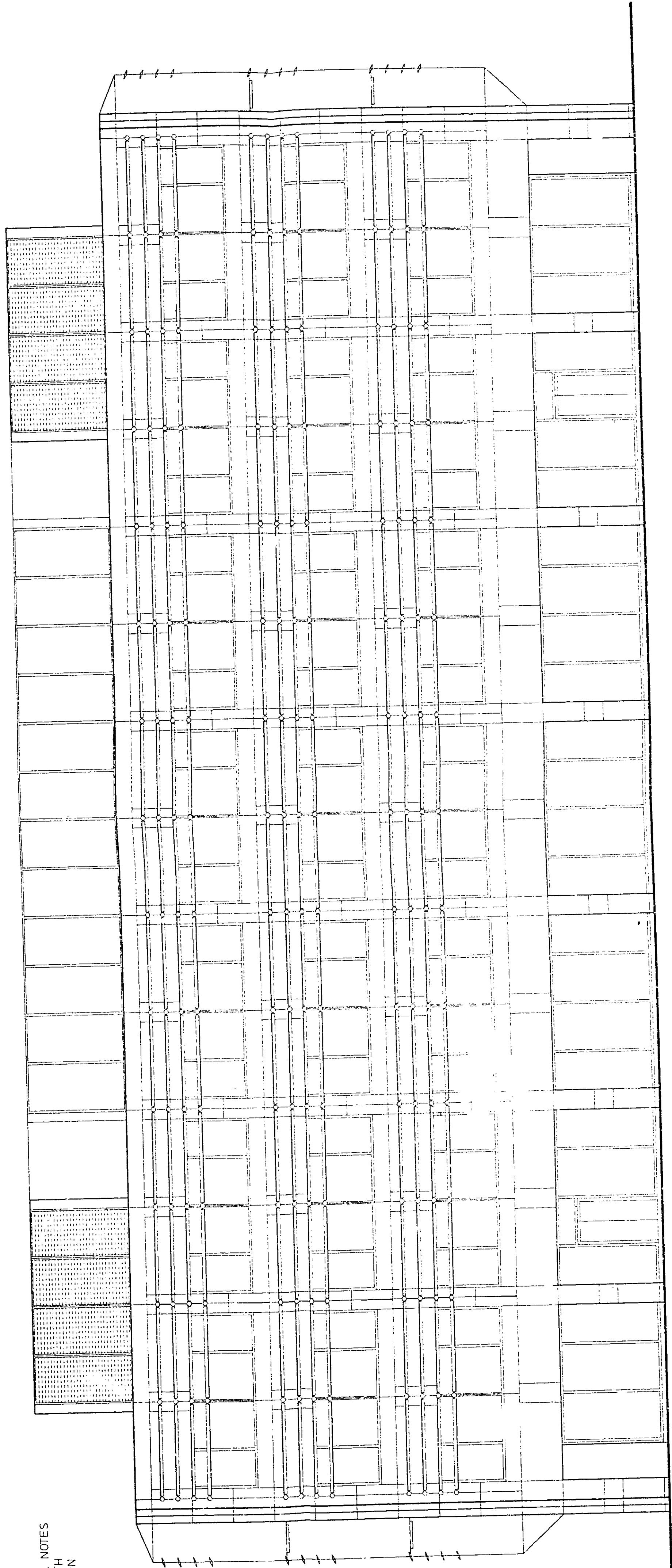
C O M M E N T D E V E L O P M E N T  
 B Y A R M  
 Y R A N D P L A N N E R  
 F E B R U A R Y I 9 8 9

P09  
 08.02.89

WILSON HATFIELD DC  
 26 MAR 1989

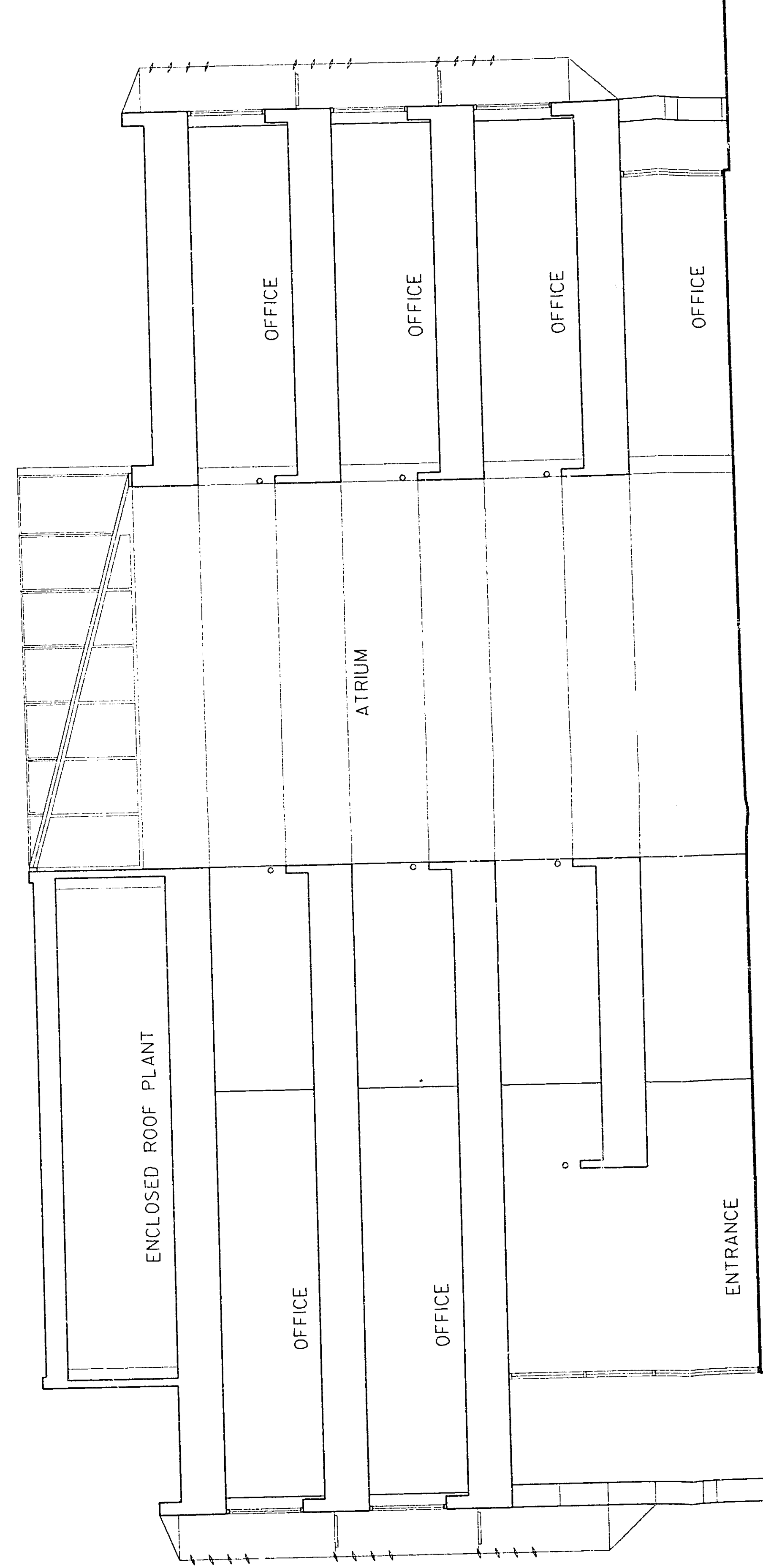
H00

23 22 ▲A1 20 19. 18 17 16 ▲A2 14 13 12 11 ▲A3 9 8 ▲A4 + - mter A4 ▲ 8 9 A3 ▲ 11 12 13 14 A2 ▲ 16 17 18 19 20 A1 ▲ 22 23



MATERIAL NOTES  
AS SOUTH  
ELEVATION

N O R T H  
E L E V A T I O N



PLANT ROOF  
ROOF  
19.80

PARAPET  
16.60

THIRD  
FLOOR  
12.00

SECOND  
FLOOR  
08.10

FIRST  
FLOOR  
04.20

GROUND  
FLOOR  
00.00

N O R T H  
S O U T H  
S E C T I O N

Office 6000

115 FEB 1989  
6/161/89

B U I L D I N G  
B

C O M M E N T  
D E V E L O P M E N T  
B Y  
A R C H I T E C T S  
F E B R U A R Y  
A N D  
P L A N N E R S  
I 9 8 9

POS  
08.02.89

Stamp with illegible text and a date.

H100