

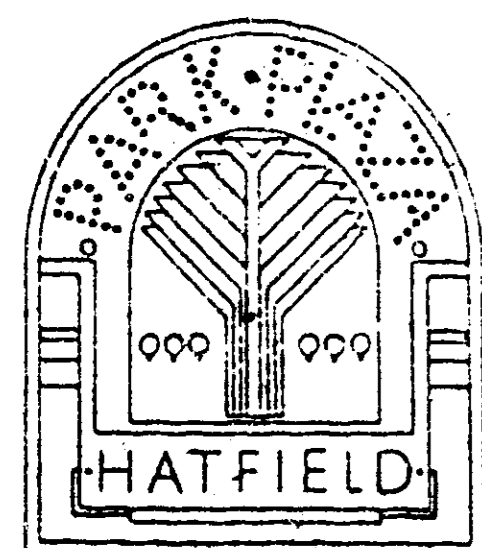
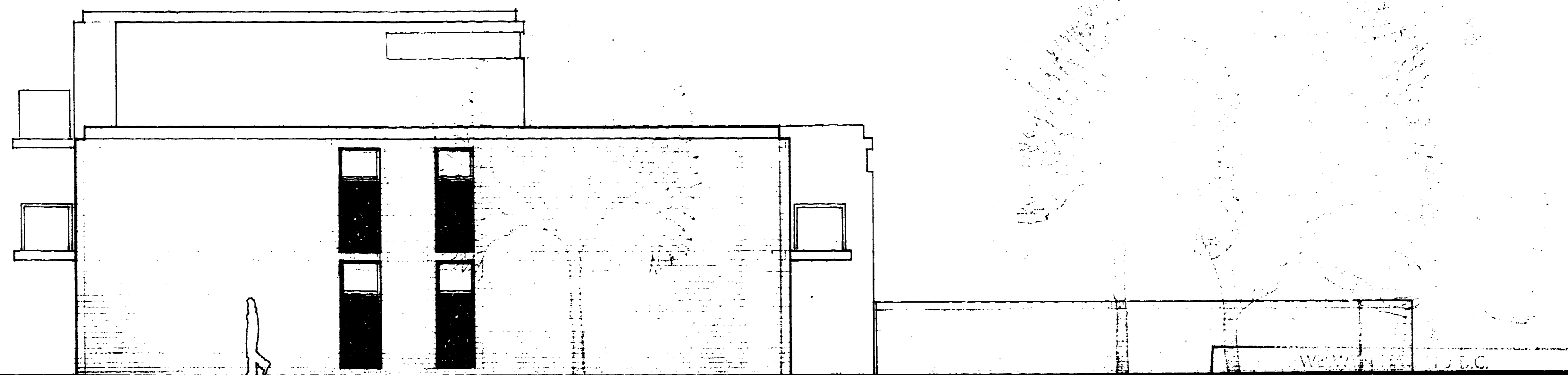
PLANNING FILES

A1 (M) HATFIELD/LEMSEFORD RD

S6/392/87

PART 1 OF 2

9/9



SOUTH ELEVATION

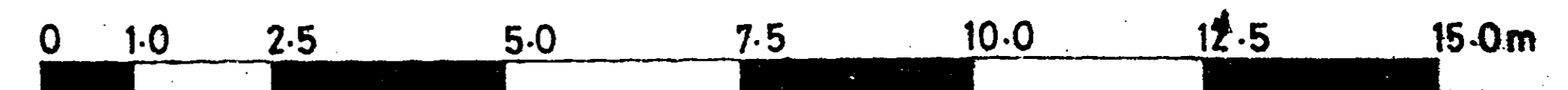
BLOCK D

WELWYN HATFIELD D.C.
RECEIVED..... 8 JUL 1987

6/392/87

AMENDMENT

OFFICE COPY



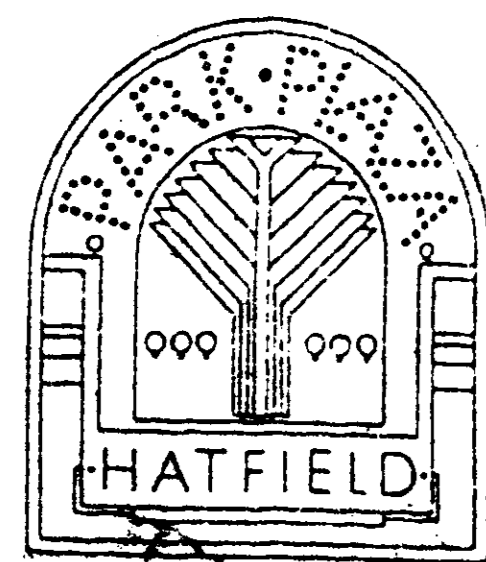
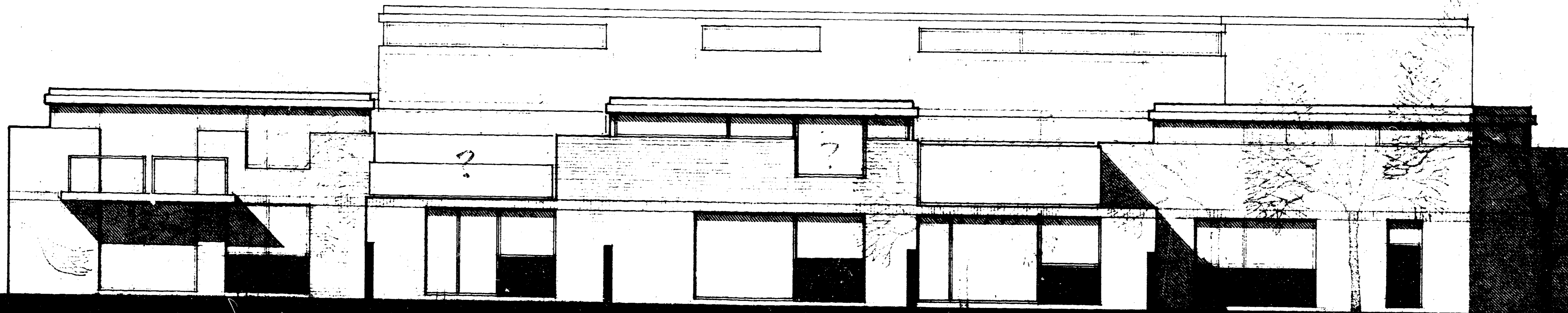
Michael Aukett Associates
Architects and designers
17 Chelsea Embankment London SW3
Telephone 01-352-0142
Telex 895342

RESIDENTIAL BLOCK D
SOUTH ELEVATION
PARK PLAZA HATFIELD

8 MAY 87
87/13/2
1346



PC



EAST ELEVATION

BLOCK D

WELWYN HATFIELD D.C.
RECEIVED.....
9 JUL 1987

6/392/87

AMENDMENT

30 JUL 1987

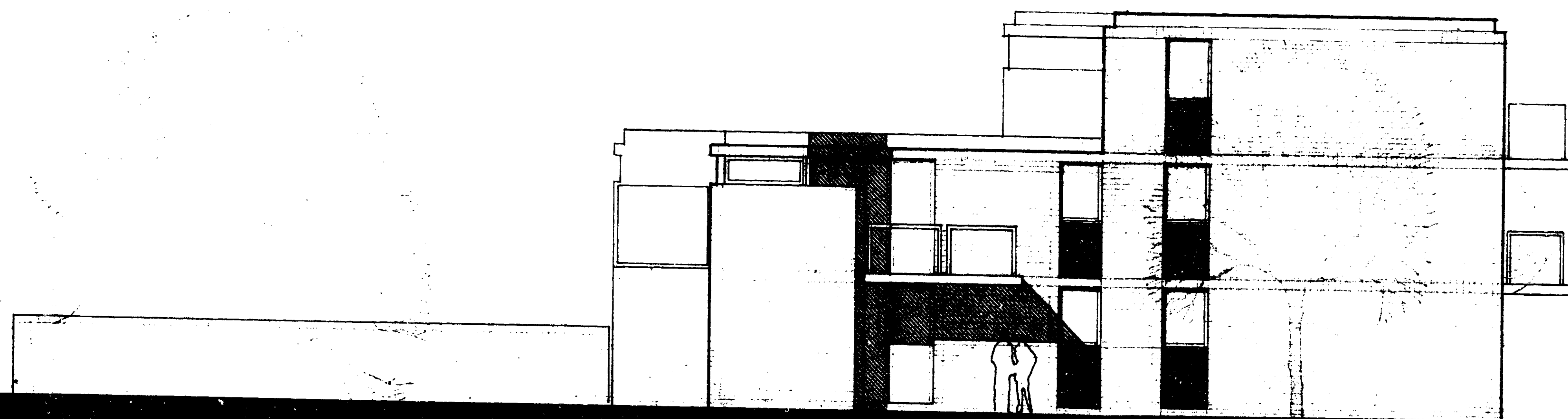
OFFICE COPY

0 1.0 2.5 5.0 7.5 10.0 12.5 15.0m

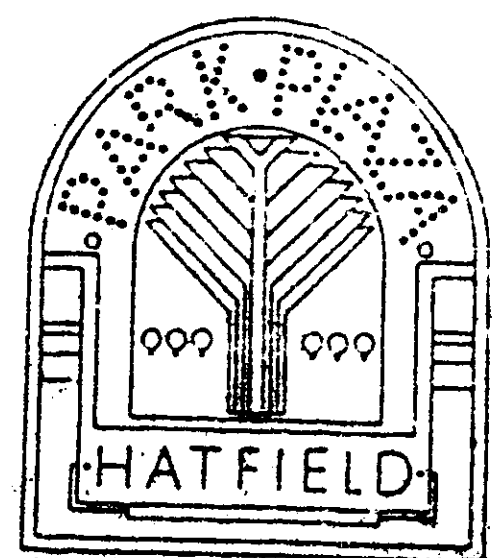
Michael Aukett Associates
Architects and Designers
17 Chelsea Embankment London SW3
Telephone 01-363-6142
Telex 8063482

RESIDENTIAL BLOCK D
EAST ELEVATION
PARK PLAZA HATFIELD

8 MAY 87
6713/2
1347



Date 30 JUL 1987



NORTH ELEVATION

BLOCK D

WELWYN HATFIELD D.C.
RECEIVED..... 5 JUL 1987
6/392/87

AMENDMENT

OFFICE COPY



Michael Aukett Associates
Architects and designers
17 Chelsea Embankment London SW3
Telephone 01-352-6142
Telex 8853482

RESIDENTIAL BLOCK D
NORTH ELEVATION
PARK PLAZA HATFIELD 1348
8 MAY 87
8713/2
A