

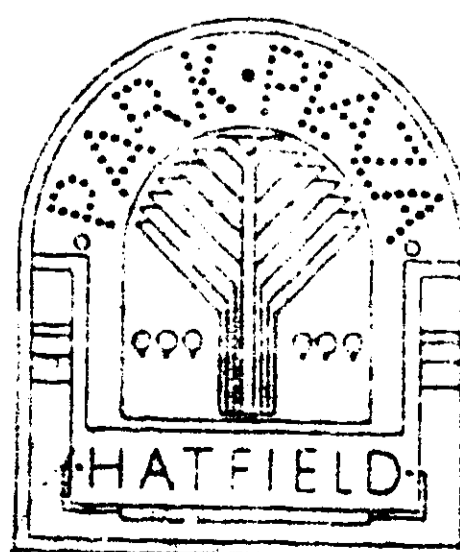
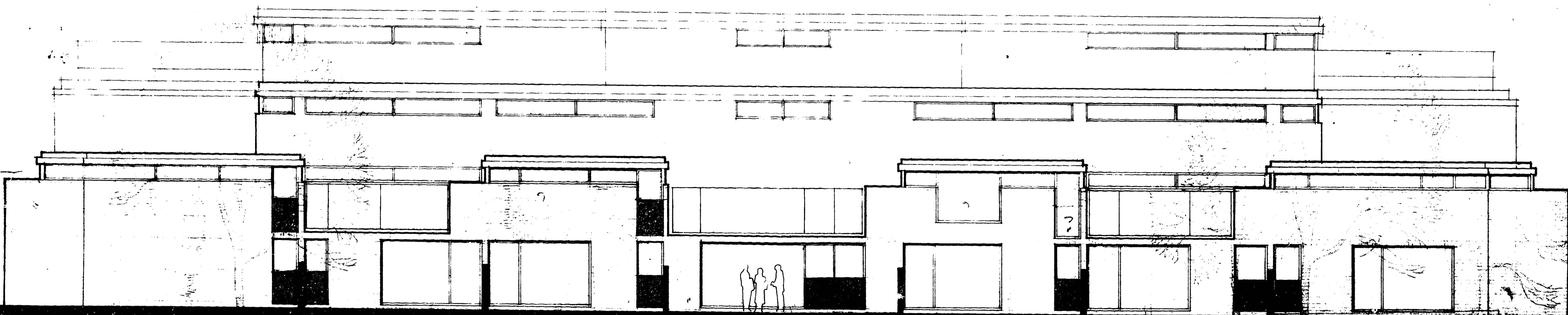
PLANNING FILES

A1 (M) HATFIELD/LEMSEFORD RD

S6/392/87

PART 1 OF 2

8/9



**EAST ELEVATION**

**BLOCK C**

WELWYN HATFIELD D.C.  
RECEIVED 30 JUL 1987  
**6/392/87**

**AMENDMENT**

**OFFICE COPY**

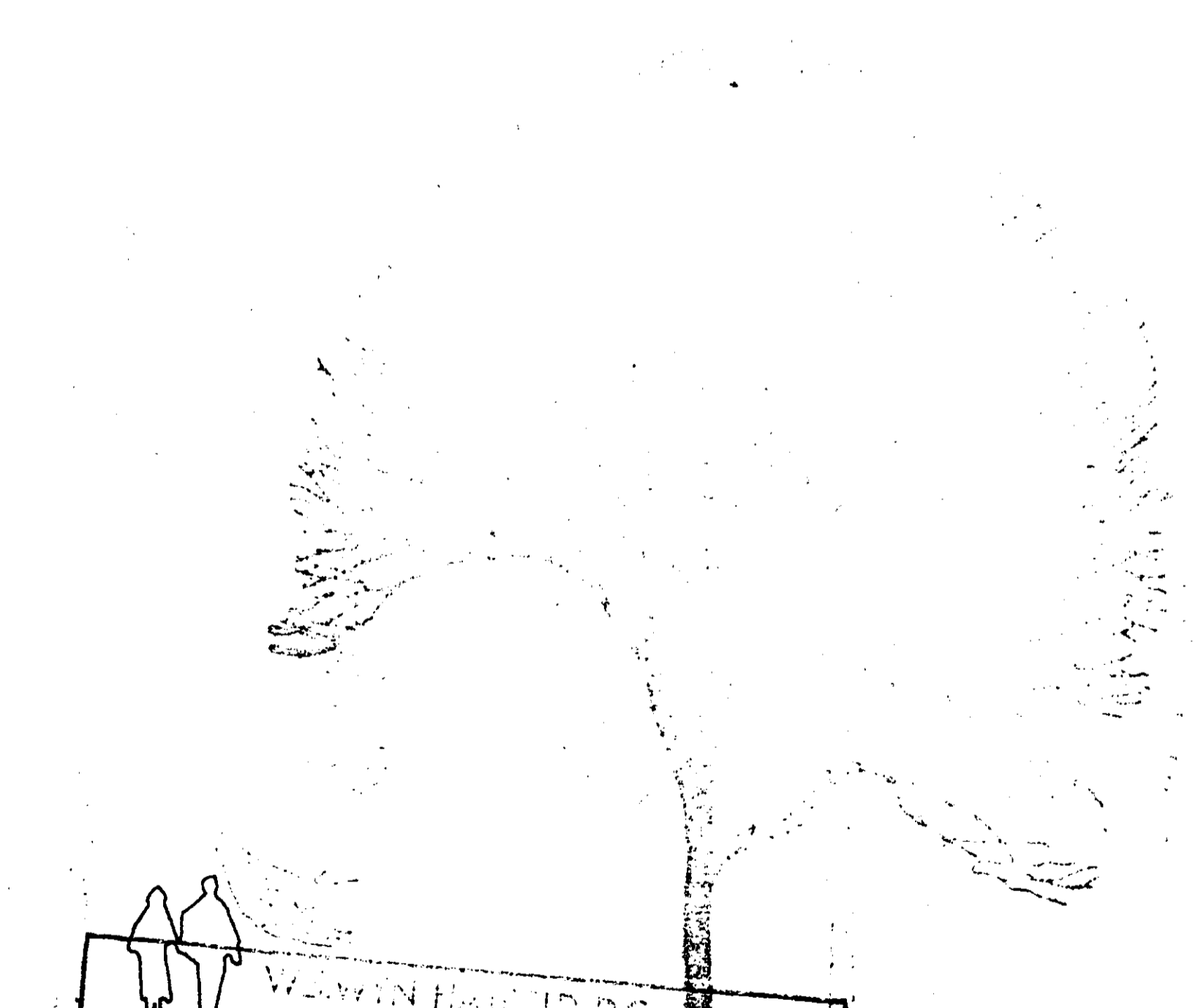
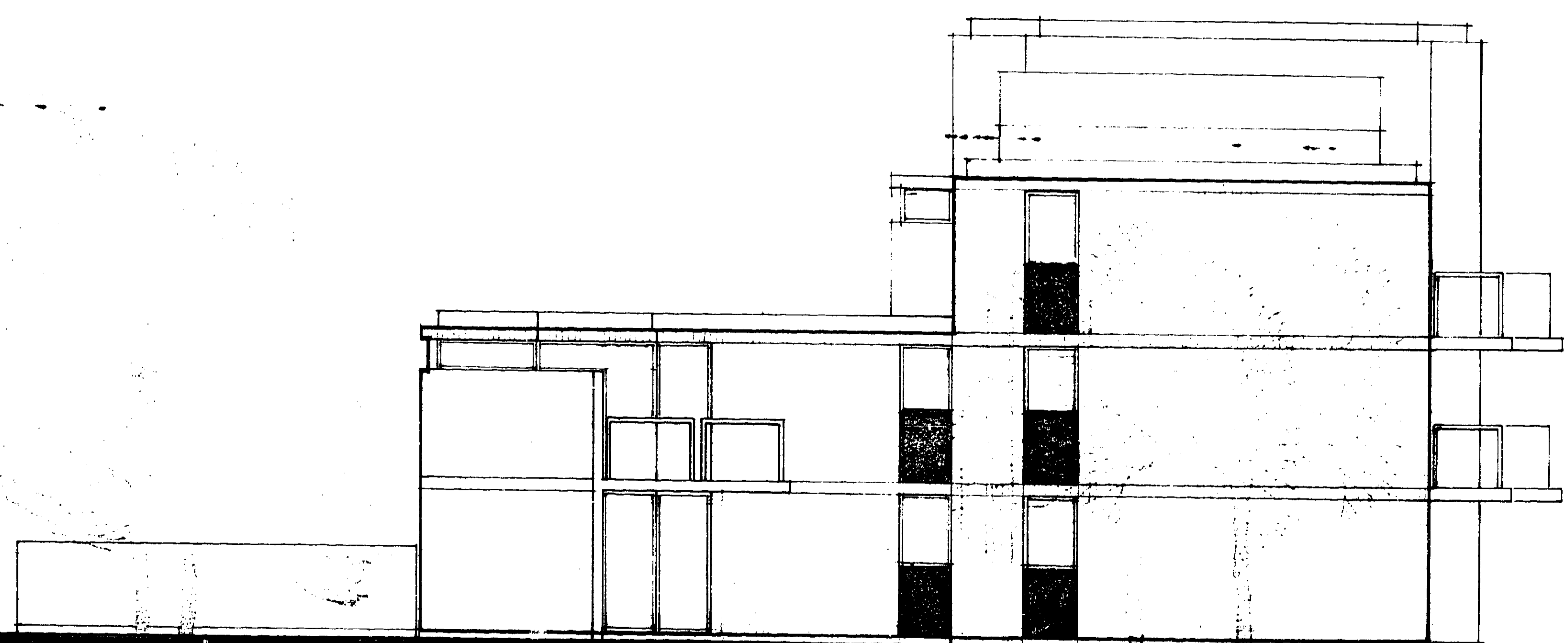


Michael Ashott Associates  
Architects and designers  
17 Chelsea Embankment London SW3  
Telephone 01-352-9142  
Telex 885348Z

RESIDENTIAL BLOCK C  
EAST ELEVATION  
PARK PLAZA HATFIELD 1339

8 MAY 87  
0713/2

30 JUL 1987



Date... 8.0 JUL 1987

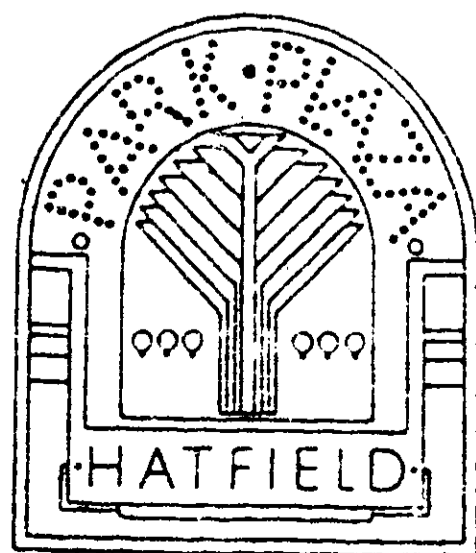
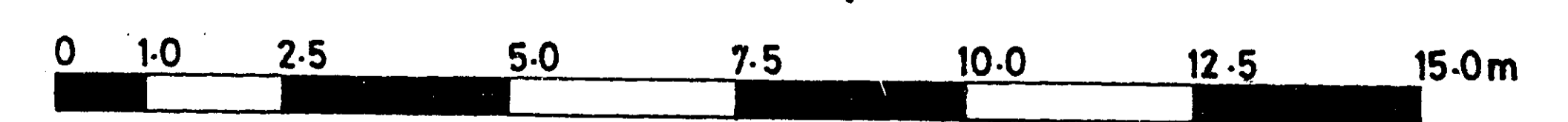
WELWYN HATFIELD D.C.

RECEIVED... 8 JUL 1987

6/392/87

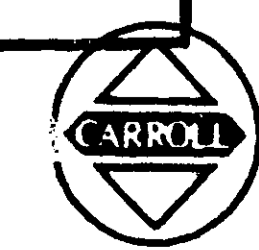
AMENDMENT

OFFICE COPY



NORTH ELEVATION

BLOCK C



Michael Aukett Associates  
Architects and designers  
17 Chelsea Embankment London SW3  
Telephone 01-352-0142  
Telex 8853482

RESIDENTIAL BLOCK C  
NORTH ELEVATION  
PARK PLAZA HATFIELD

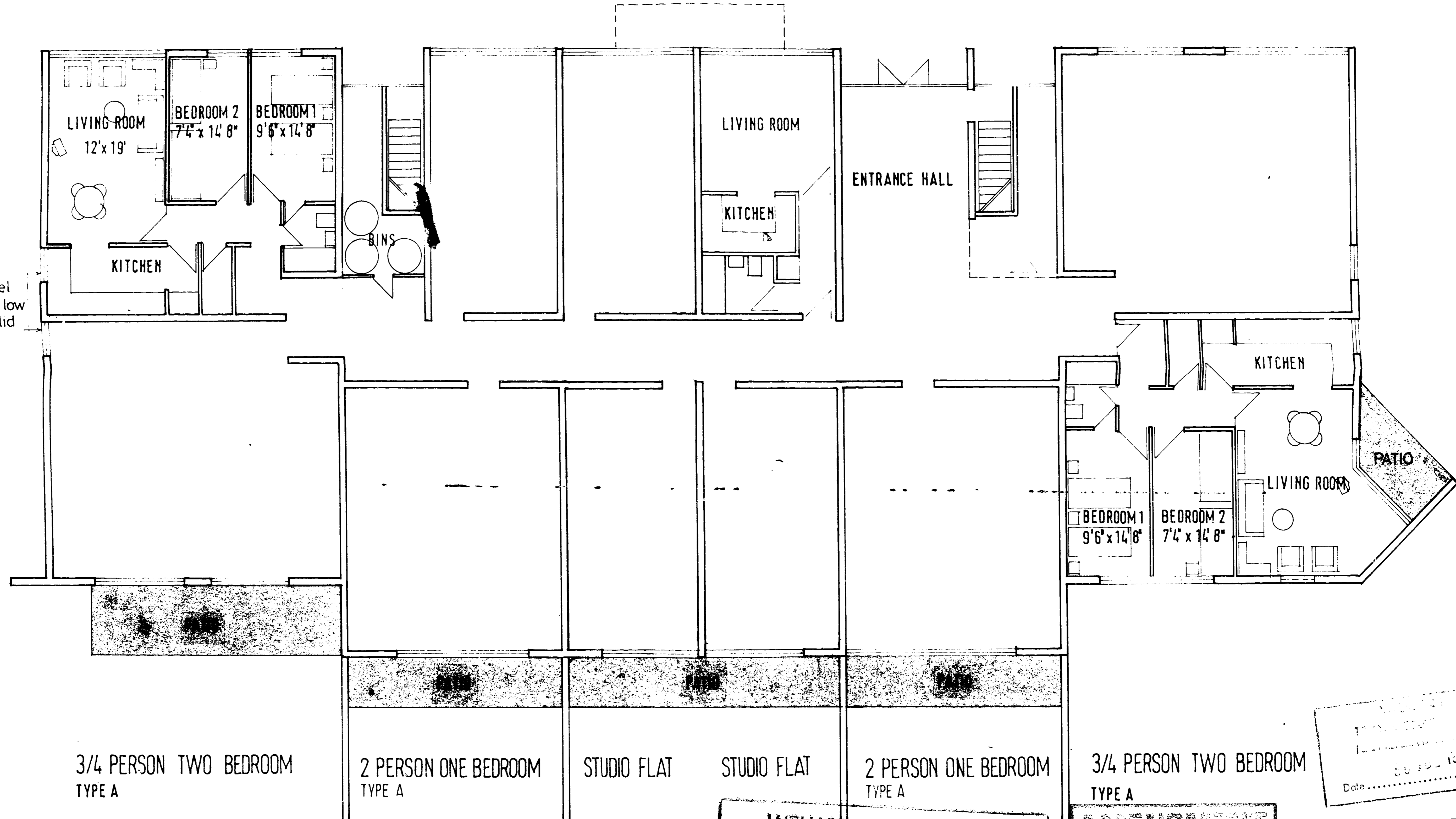
8 MAY 87  
8713/2  
1340

A

3/4 PERSON TWO BEDROOM  
TYPE A

STUDIO FLAT    STUDIO FLAT    STUDIO FLAT

3/4 PERSON TWO BEDROOM  
TYPE A



High level window, low level solid panel.

NOTE: Dotted lines within walls denotes high level windows.

3/4 PERSON TWO BEDROOM  
TYPE A

2 PERSON ONE BEDROOM  
TYPE A

STUDIO FLAT

STUDIO FLAT

2 PERSON ONE BEDROOM  
TYPE A

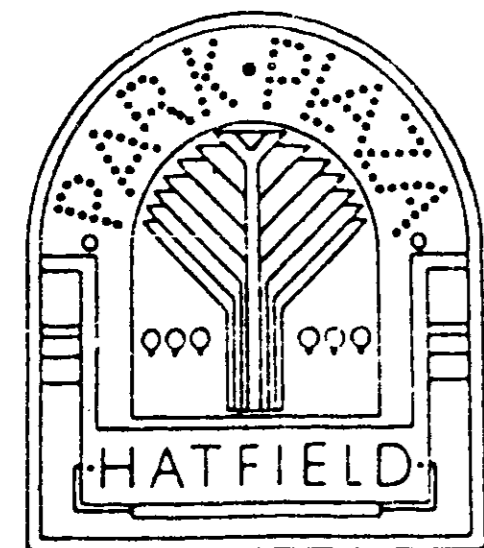
3/4 PERSON TWO BEDROOM  
TYPE A

RECEIVED  
DATE 30 JUL 1987

WELWYN HATFIELD D.C.  
RECEIVED... 8 JUL 1987  
6/392/87

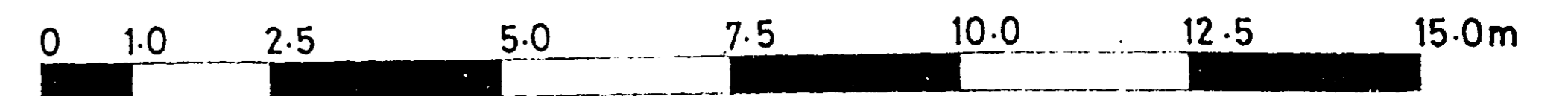
AMENDMENT

OFFICE COPY



GROUND FLOOR PLAN

BLOCK D



Michael Aukett Associates  
Architects and designers  
17 Chelsea Embankment London SW3  
Telephone 01-352-0142  
Telex 8853482

RESIDENTIAL BLOCK D	8 MAY 87
GROUND FLOOR	8713/2
PARK PLAZA HATFIELD	1341 A

3/4 PERSON TWO BEDROOM  
TYPE A

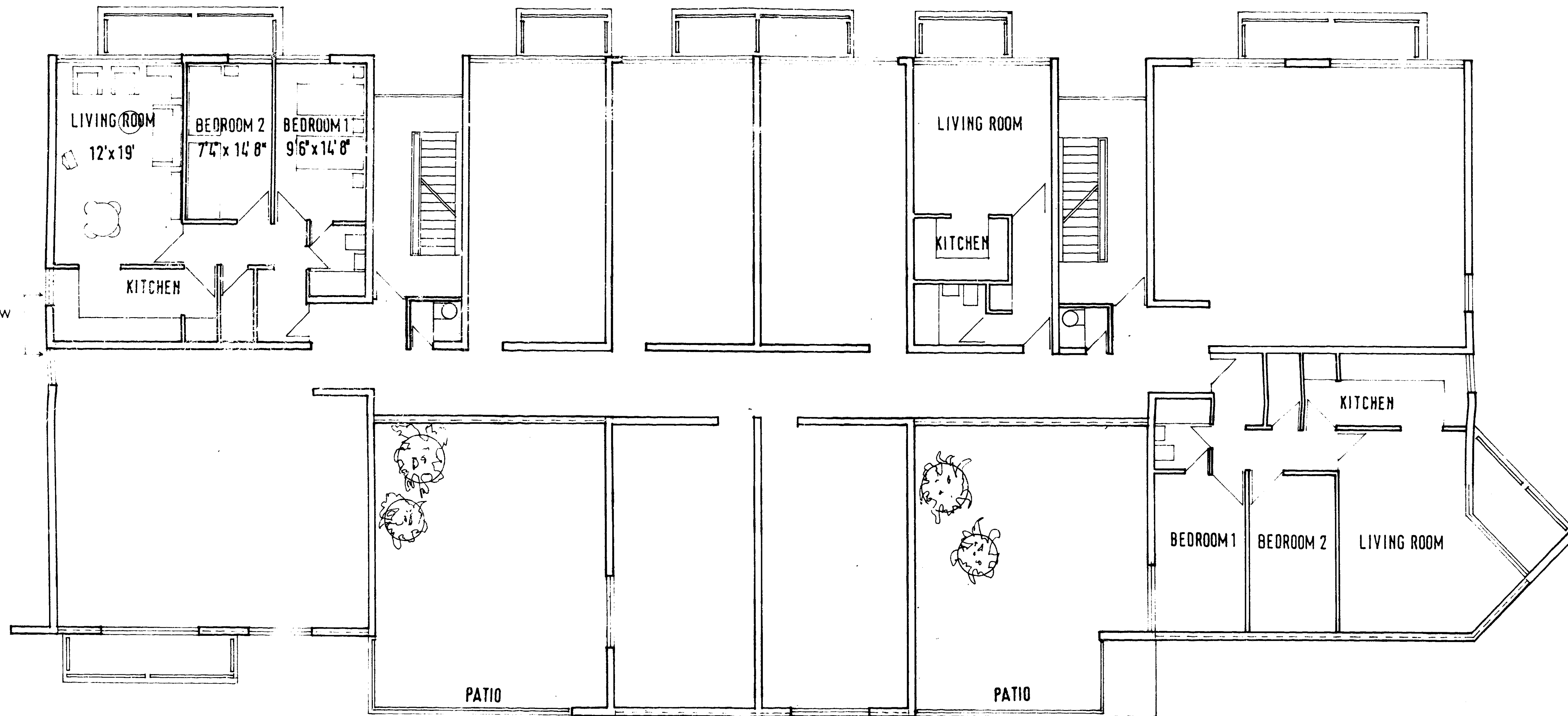
STUDIO FLAT

STUDIO FLAT

STUDIO FLAT

STUDIO FLAT

3/4 PERSON TWO BEDROOM  
TYPE A

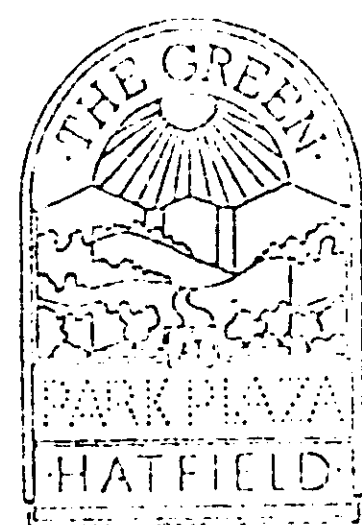
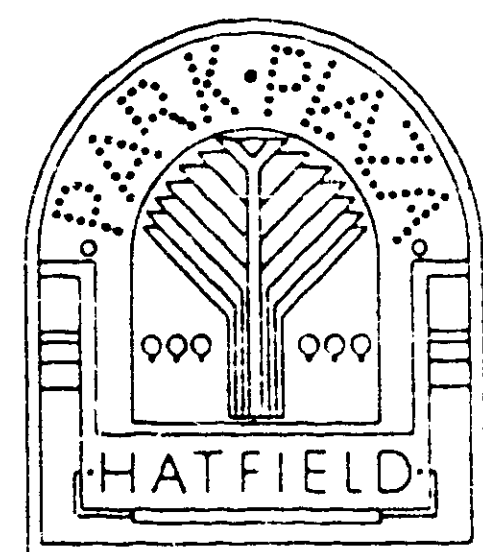


3/4 PERSON TWO BEDROOM  
TYPE A

STUDIO FLAT

STUDIO FLAT

3/4 PERSON TWO BEDROOM  
TYPE C



FIRST FLOOR PLAN

BLOCK D

WELWYN HATFIELD D.C.

RECEIVED... 30 JUL 1987

6/392/87

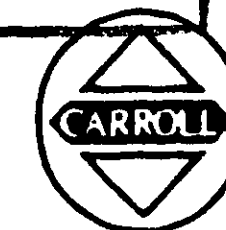
AMENDMENT

OFFICE COPY

0 1.0 2.5 5.0 7.5 10.0 12.5 15.0m

Michael Aukett Associates  
Architects and designers  
17 Chelsea Embankment London SW3  
Telephone 01-352-0142  
Telex 895348Z

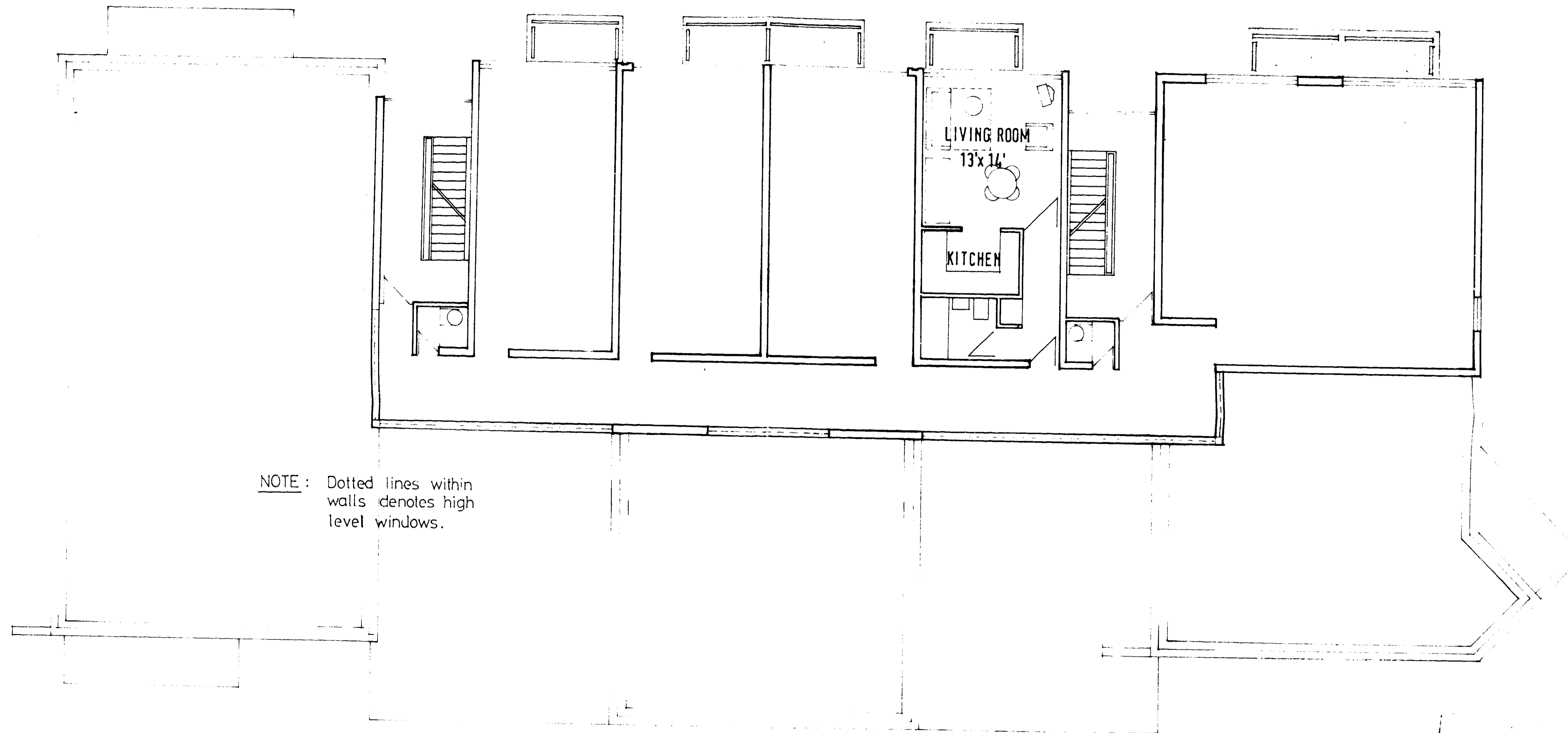
RESIDENTIAL BLOCK D	8 MAY 87
FIRST FLOOR	0713/2
PARK PLAZA HATFIELD	1342



PO2

STUDIO FLAT    STUDIO FLAT    STUDIO FLAT    STUDIO FLAT

3/4 PERSON TWO BEDROOM  
TYPE A



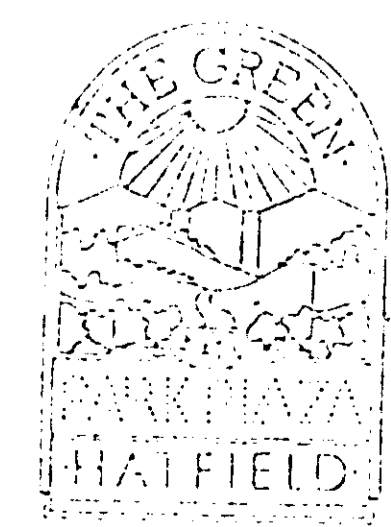
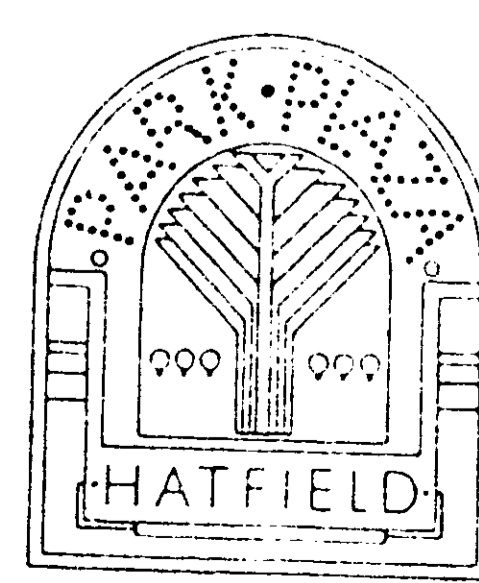
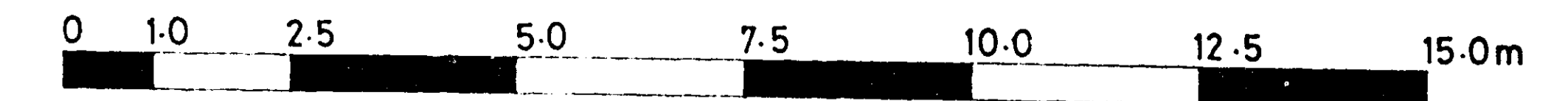
NOTE: Dotted lines within walls denotes high level windows.

RECEIVED  
DATE 30 JUL 1987

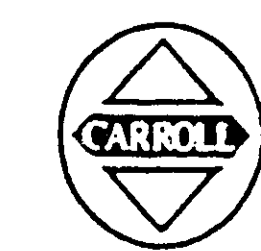
WELWYN HATFIELD D.C.  
RECEIVED... 30 JUL 1987  
6/392/87

AMENDMENT

OFFICE COPY

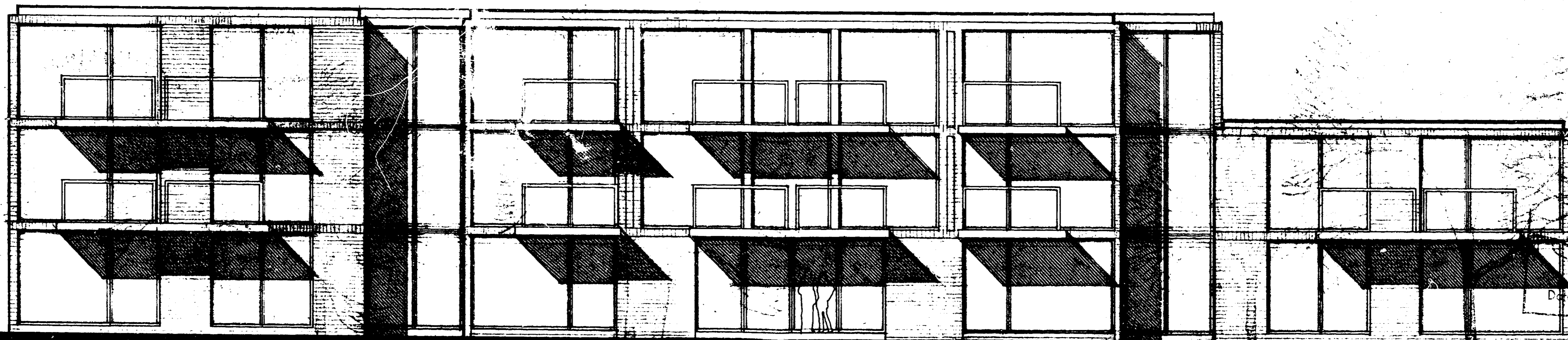


SECOND FLOOR PLAN      BLOCK D



Michael Aukett Associates  
Architects and designers  
17 Chelsea Embankment London SW3  
Telephone 01-352-0142  
Telex 8953482

RESIDENTIAL BLOCK D	8 MAY 87
SECOND FLOOR	8713/2
PARK PLAZA HATFIELD	1343    A



30 JUL 1987

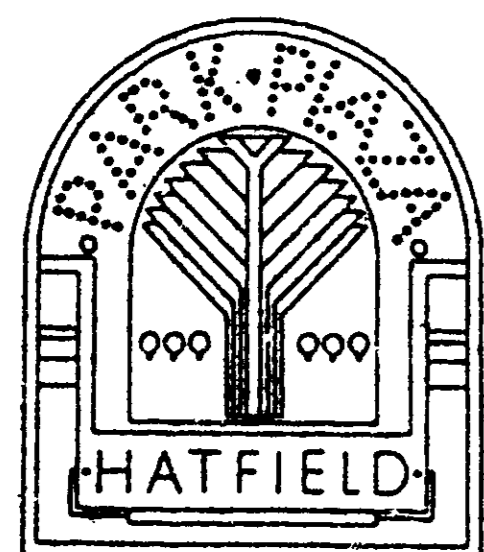
WELWYN HATFIELD D.C.

RECEIVED... 18 JUL 1987

6/392/87

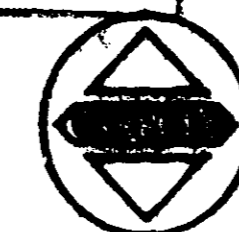
AMENDMENT

OFFICE COPY



WEST ELEVATION

BLOCK D



Michael Aukett Associates  
Architects and designers  
17 Gresham Embankment London SW3  
Telephone 01-262-0142  
Telex 8023482

RESIDENTIAL BLOCK D  
WEST ELEVATION  
PARK PLAZA HATFIELD  
MAY 87  
6/392  
1365 A