

PLANNING FILES

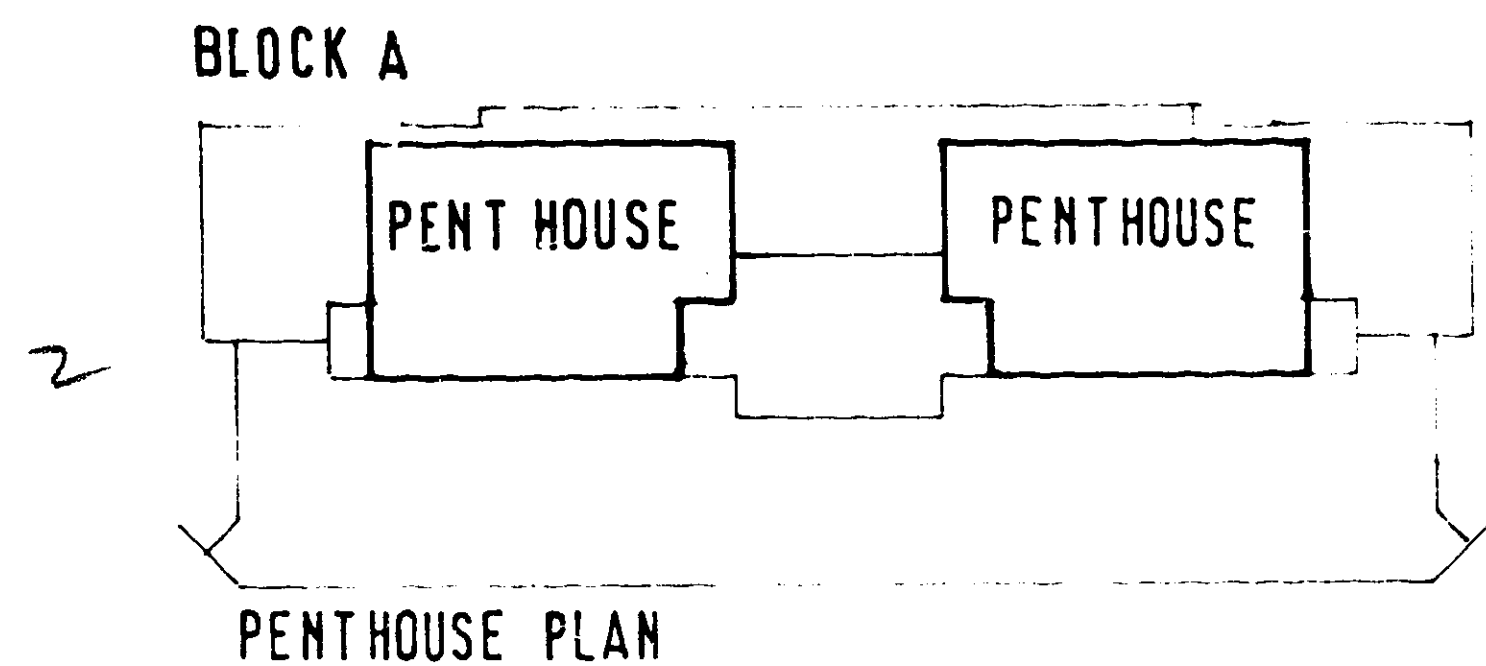
A1 (M) HATEFIELD/LEMSEFORD RD

S6/392/87

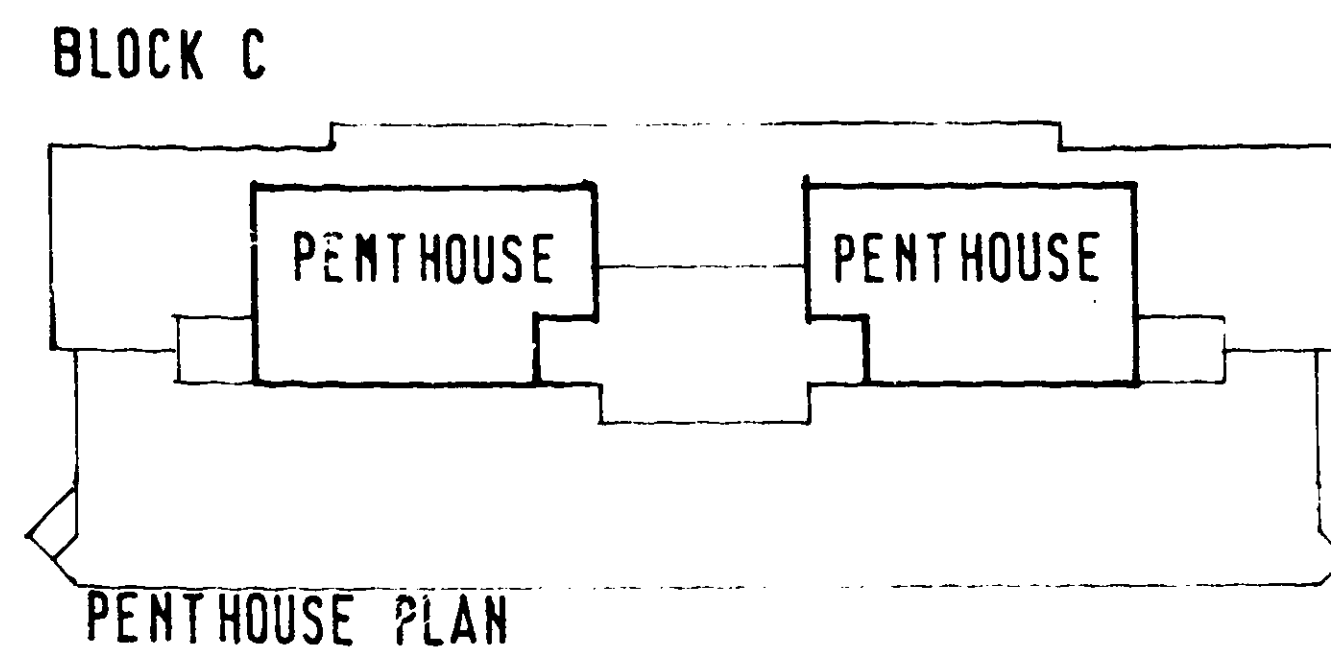
PART 1 OF 2

7/9

# BLOCK A



# BLOCK C



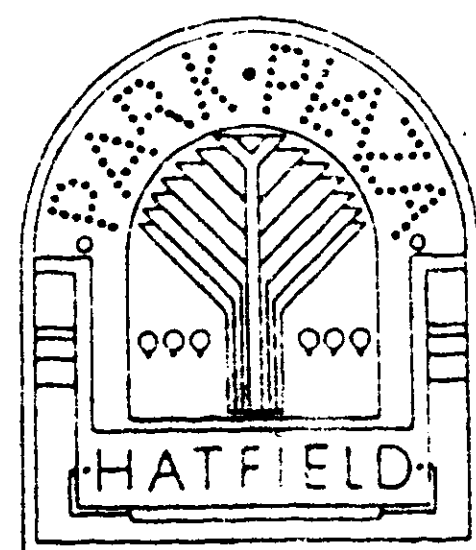
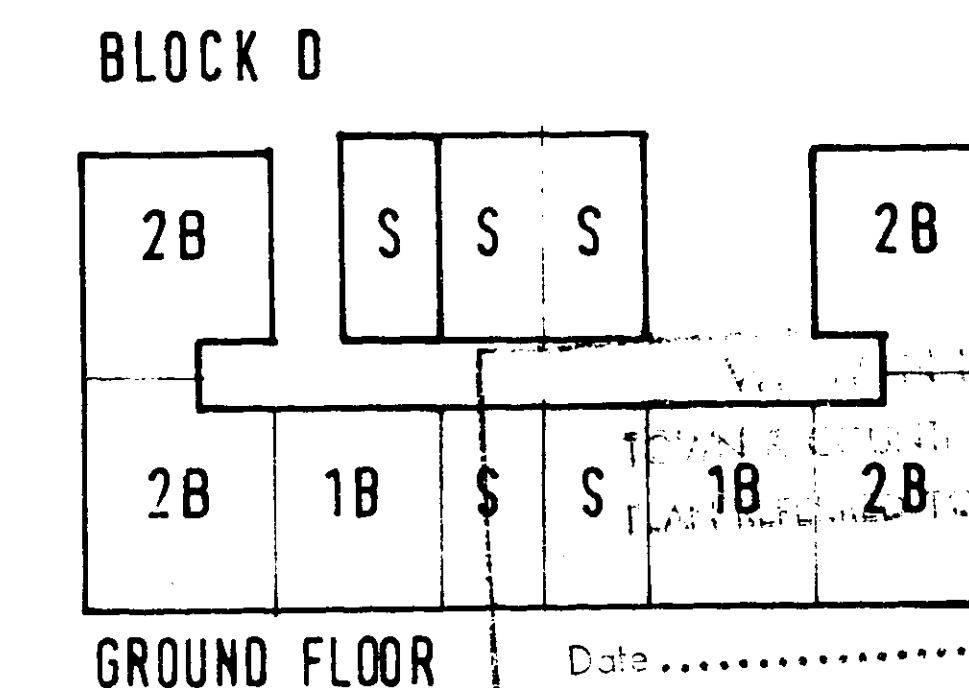
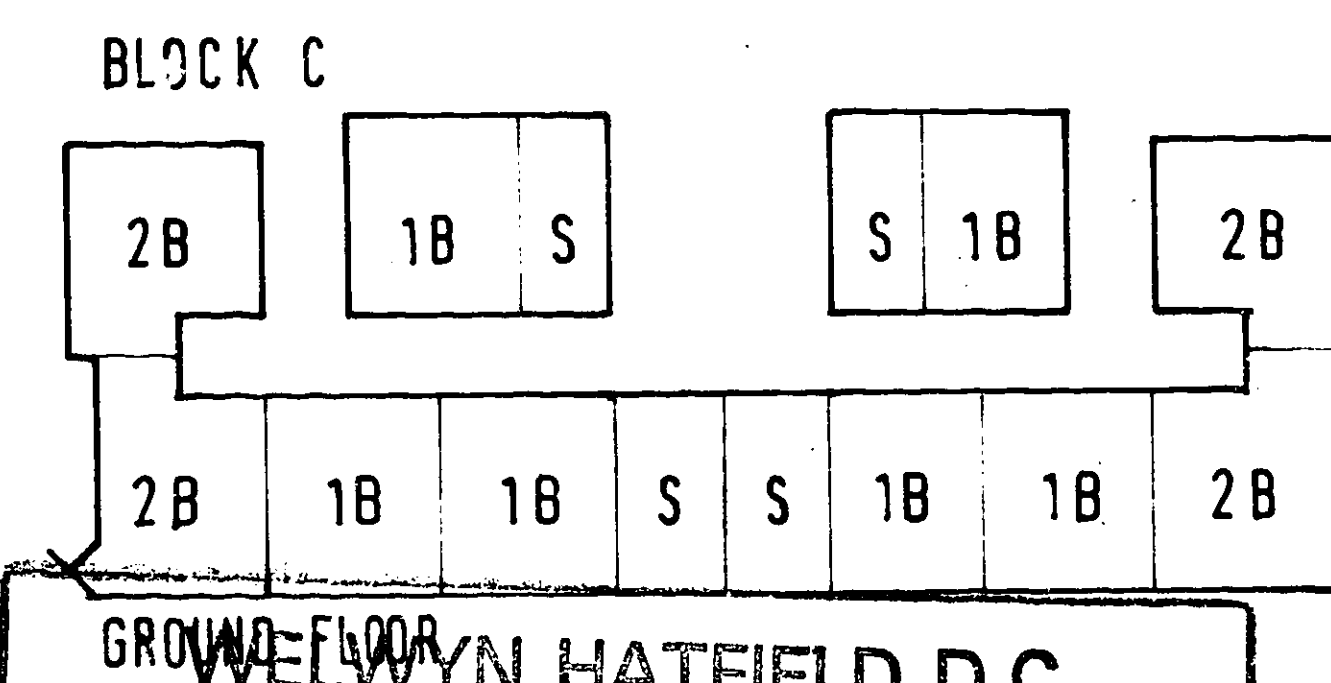
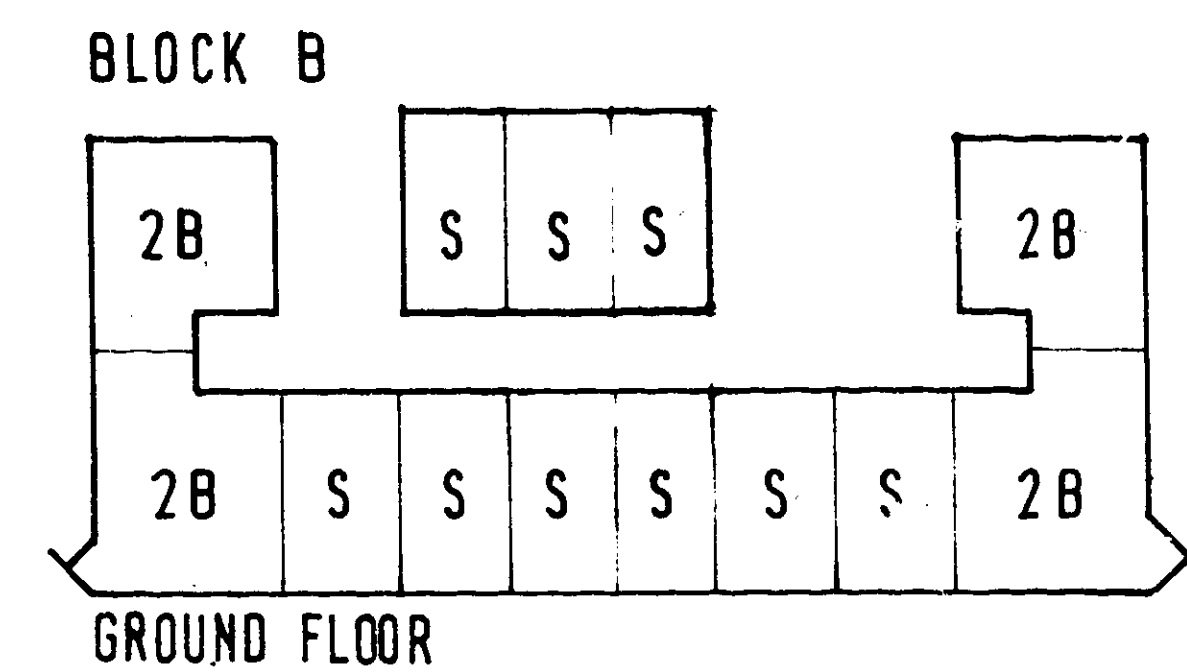
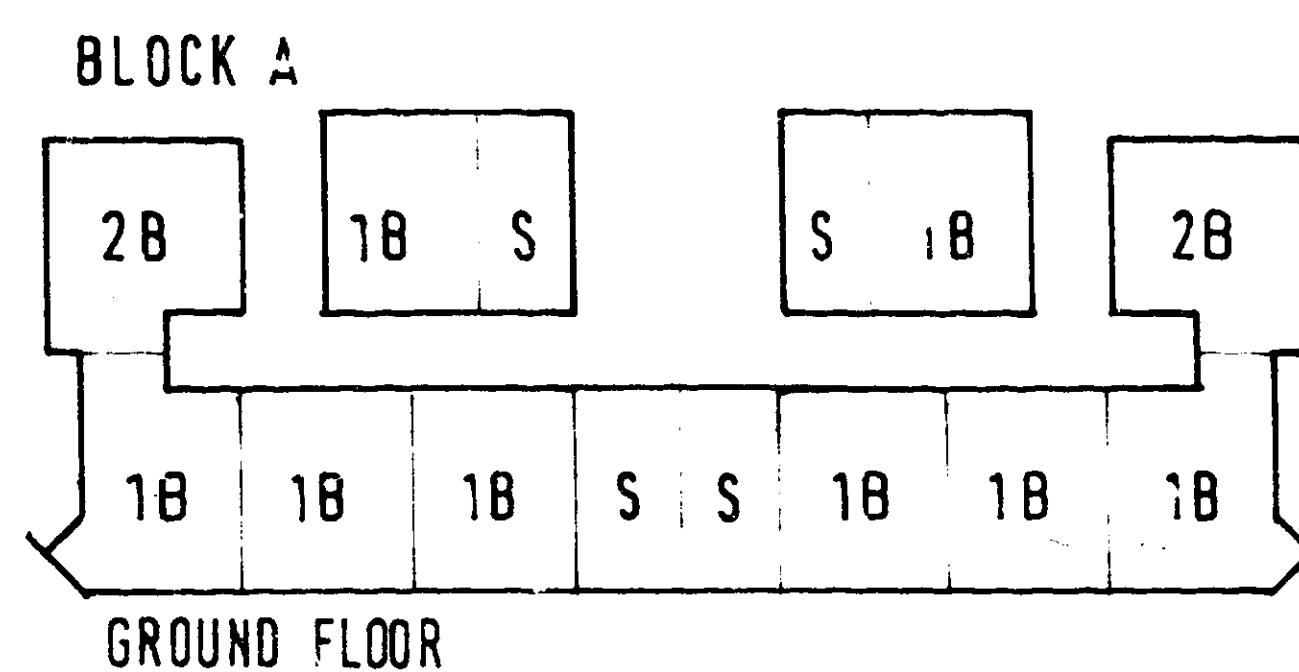
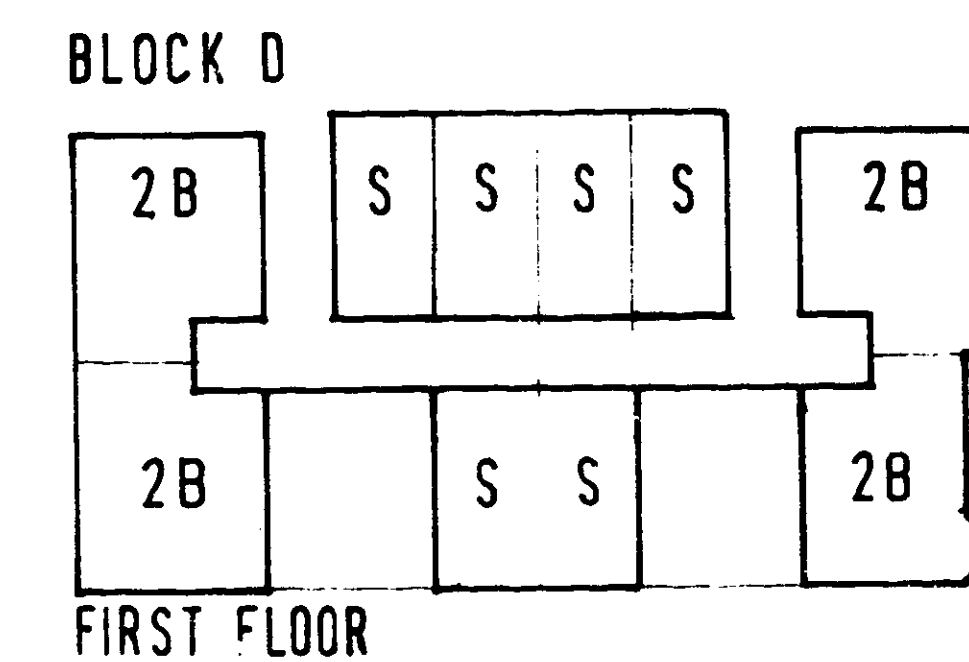
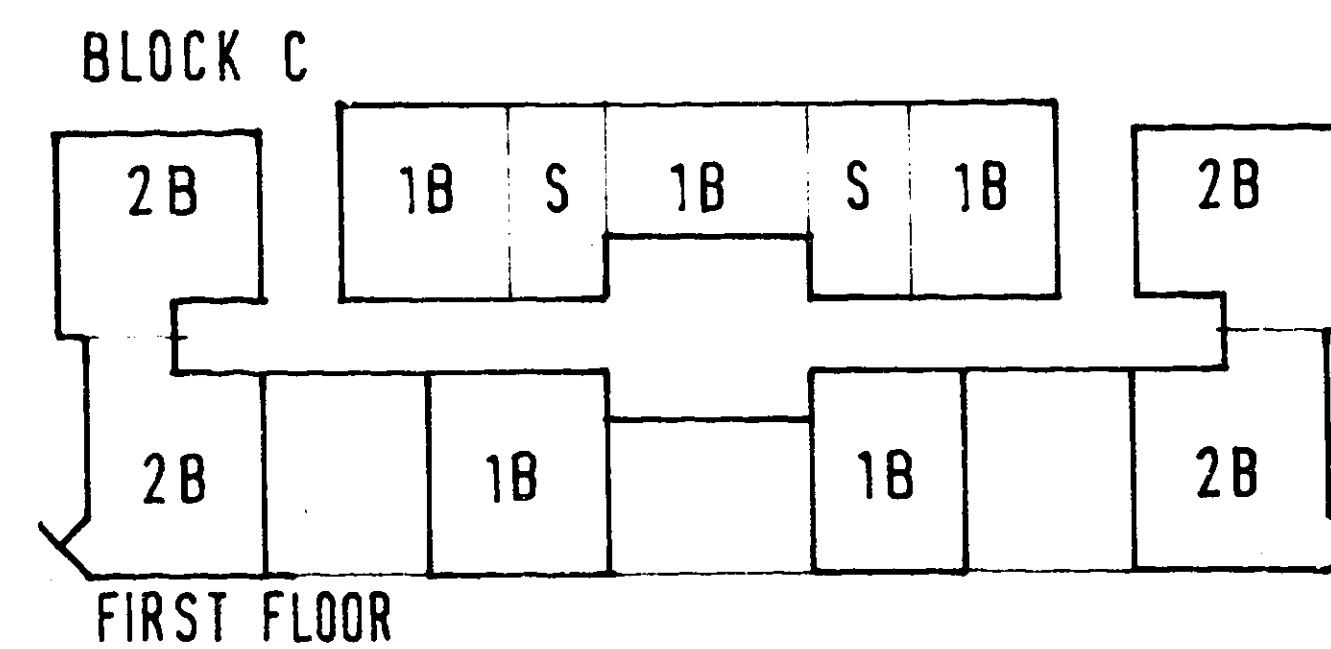
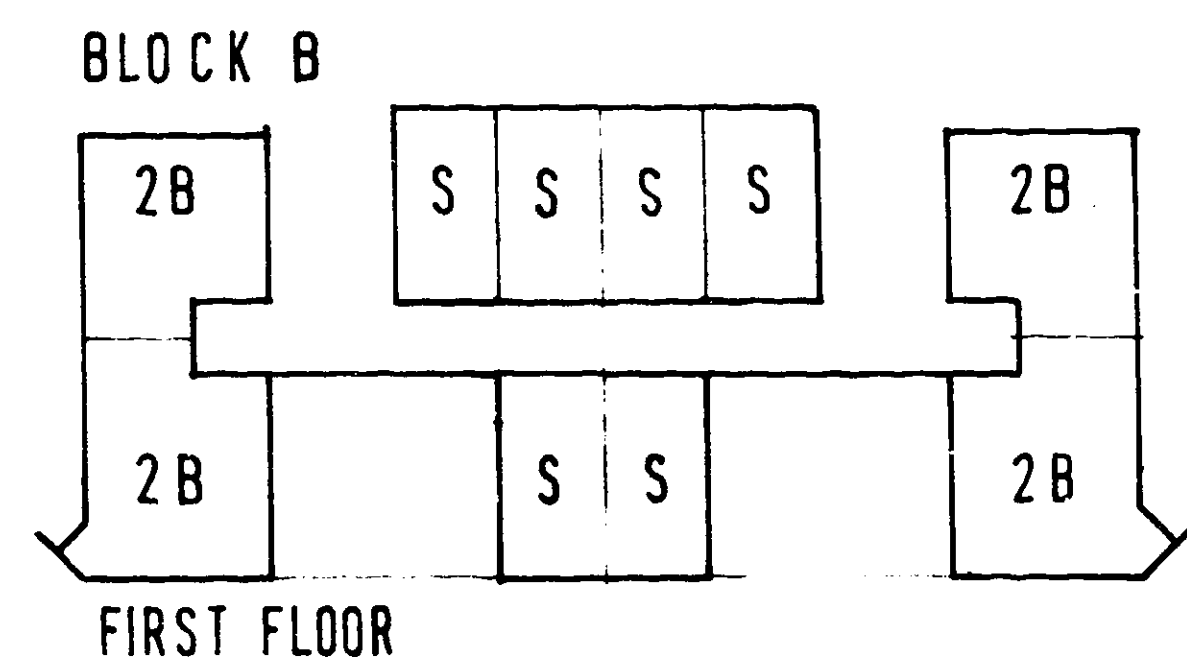
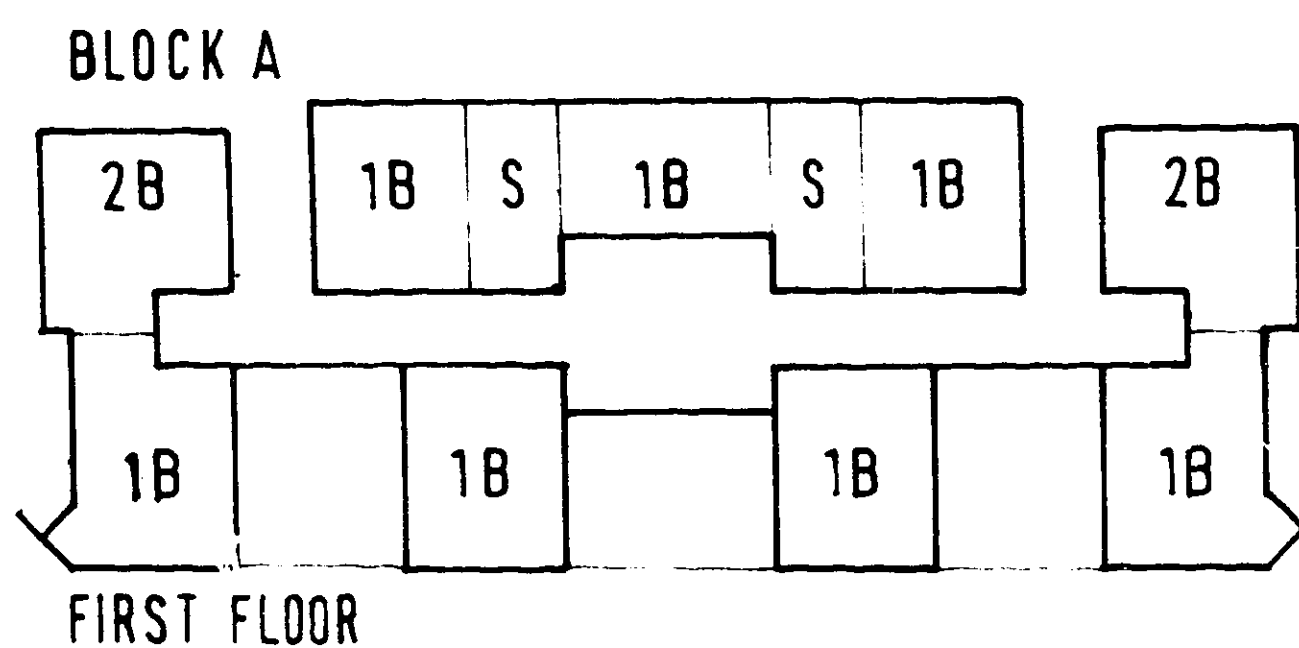
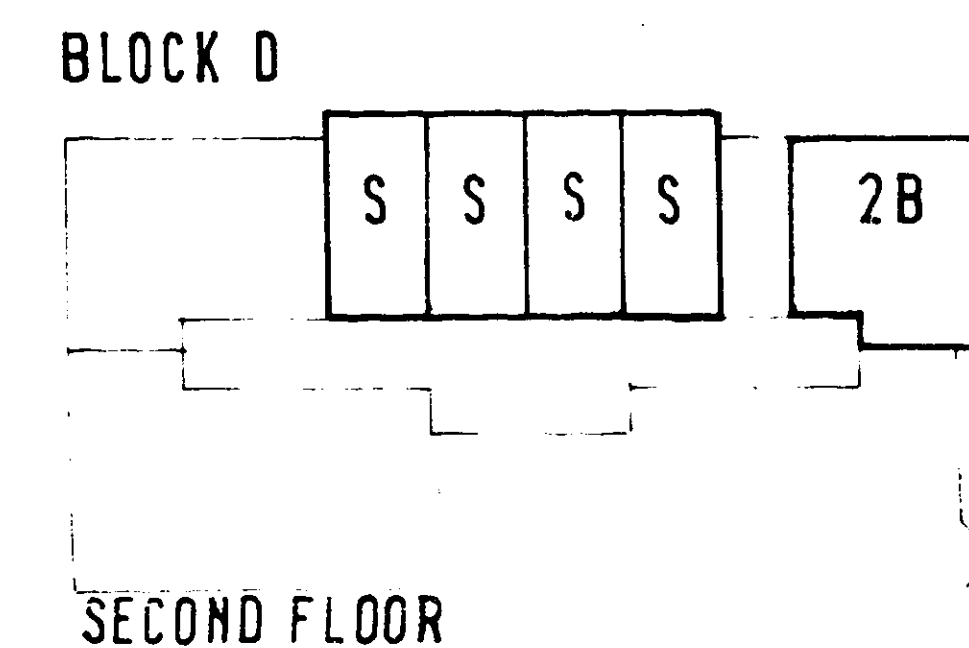
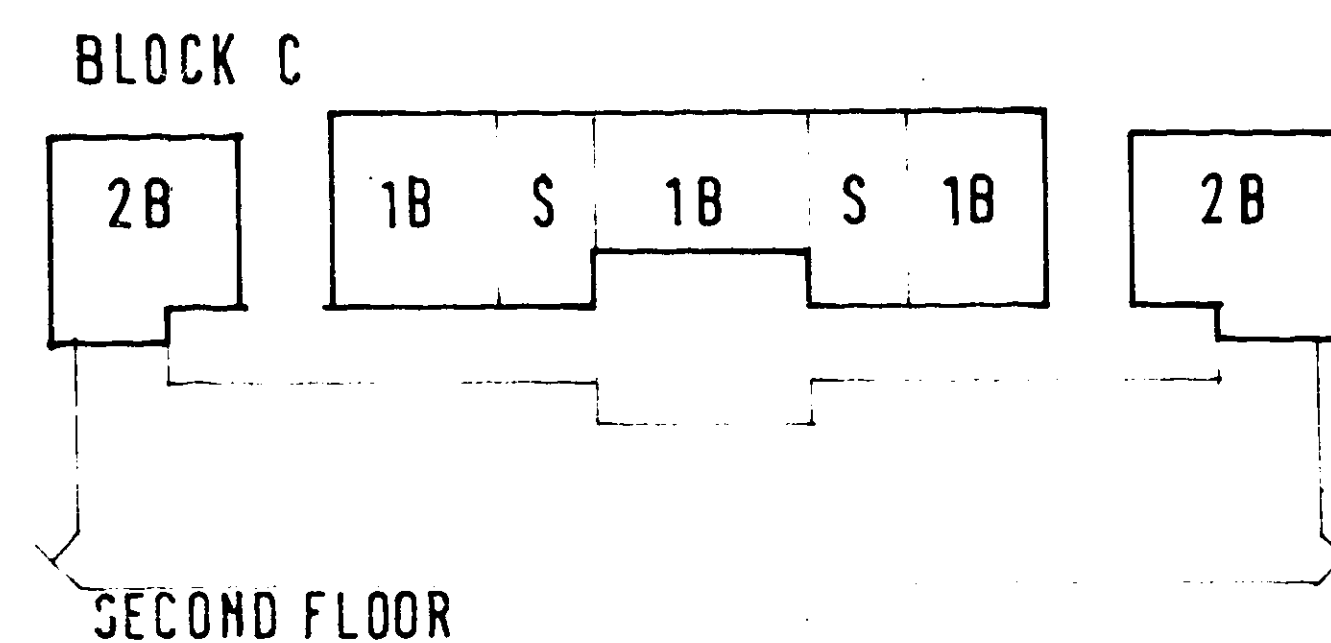
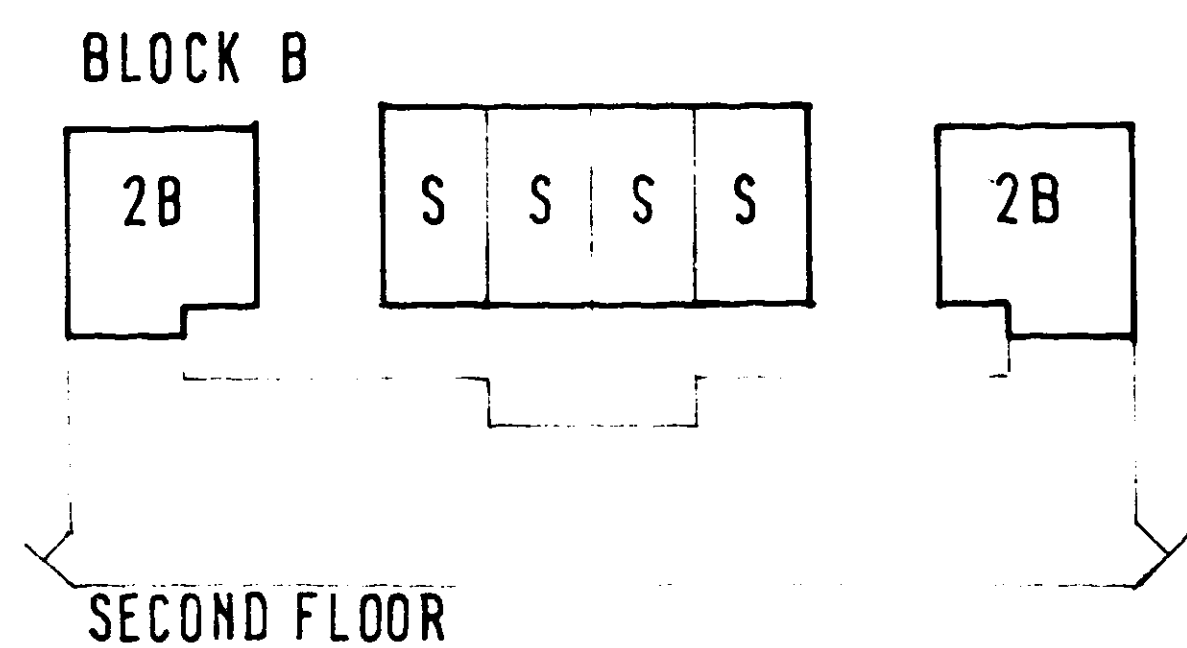
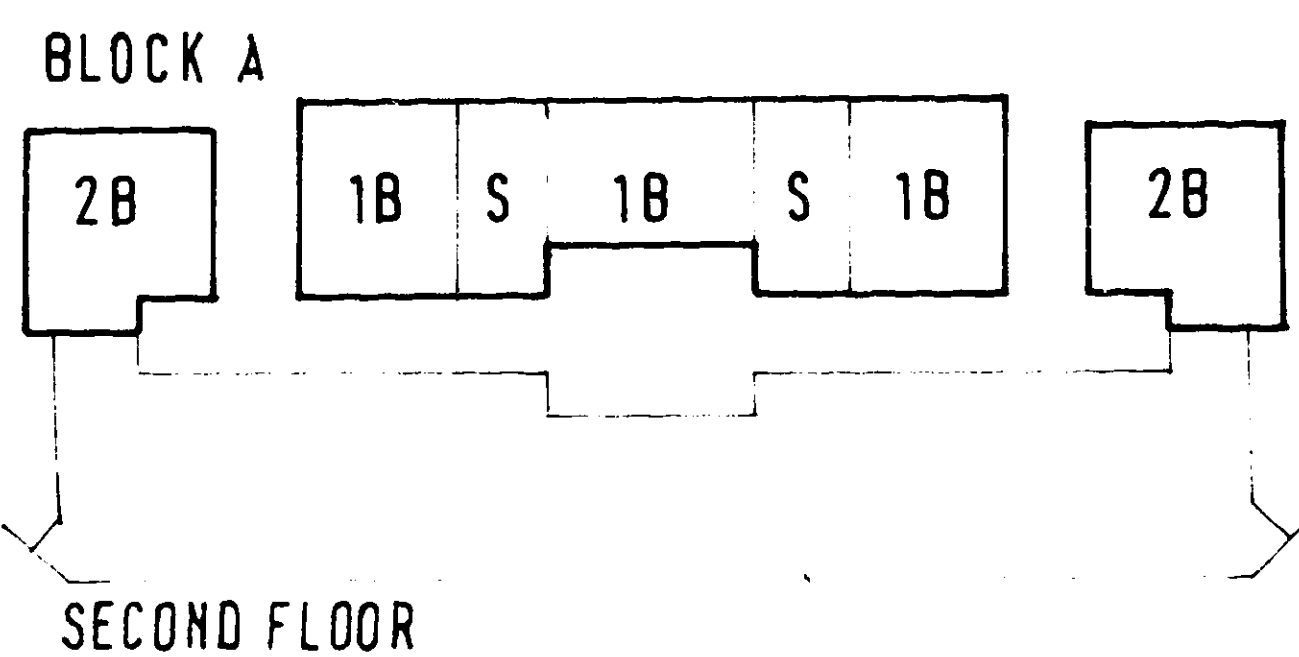
# BLOCK B

# BLOCK D

21  
5846  
-29

16  
24  
25

S  
50 = 16 10 20 10 10



## UNIT TYPES / LOCATION

RECEIVED..... 4 JUL 1987

6/392/

WELWYN HATFIELD D.C.

AMENDMENT

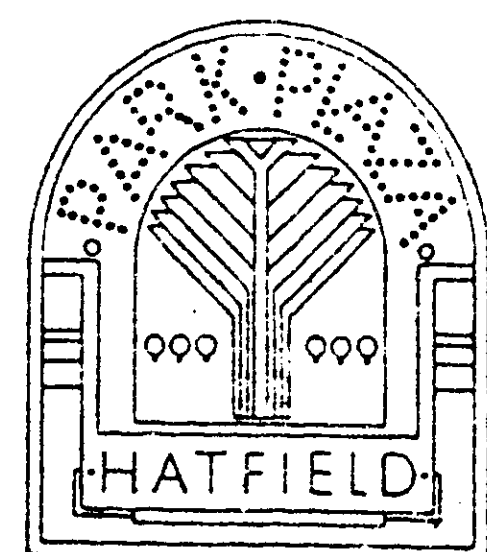
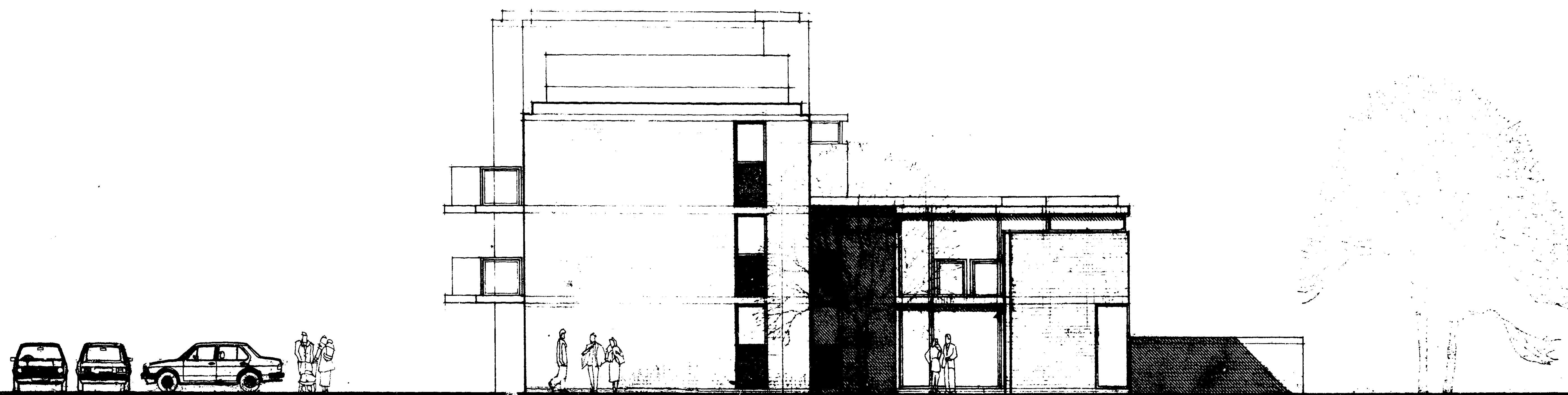
OFFICE COPY

Michael Aukett Associates  
Architects and designers  
17 Chelsea Embankment London SW3  
Telephone 01-352-0142  
Telex 8953482

RESIDENTIAL BLOCK  
UNIT / LOCATION  
PARK PLAZA HATFIELD

8 MAY 87  
0713/2  
1349

30 JUL 1987



**SOUTH ELEVATION**

**BLOCK A**

**AMENDMENT**

**WELWYN HATFIELD D.C.**

RECEIVED 9 JUL 1987

01592/87

**OFFICE COPY**

WELWYN HATFIELD D.C.  
TOWN & COUNCIL PLANNING ACT 1971  
PLAN REFERRED TO IN PLANNING PERMIT  
Date 30 JUL 1987

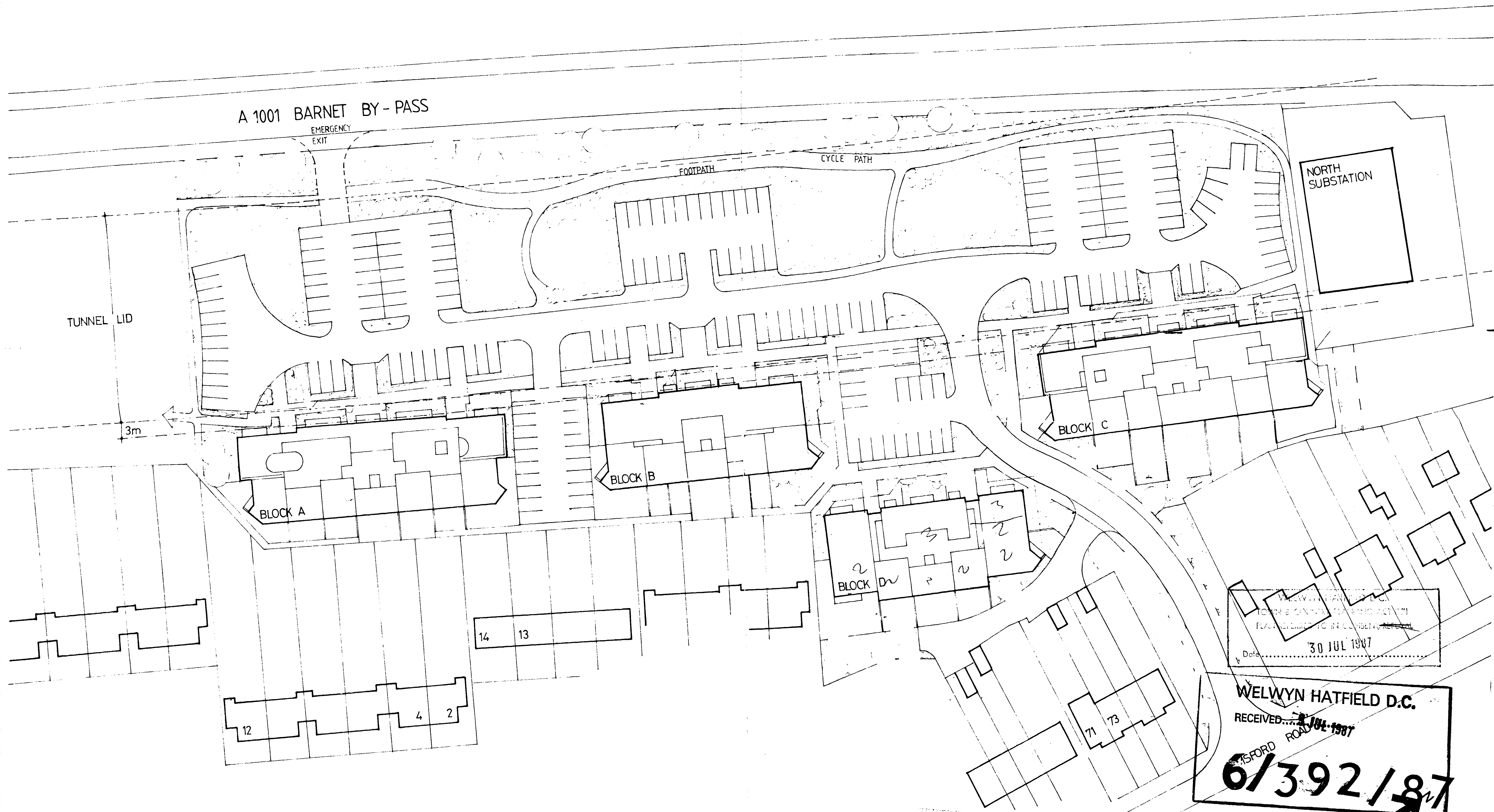
SCALE 1:100



Michael Aukett Associates  
Architects and designers  
17 Chelsea Embankment London SW3  
Telephone 01-252-0142  
Telex 895348Z

**RESIDENTIAL BLOCK A**  
**SOUTH ELEVATION**  
**PARK PLAZA HATFIELD 1321**

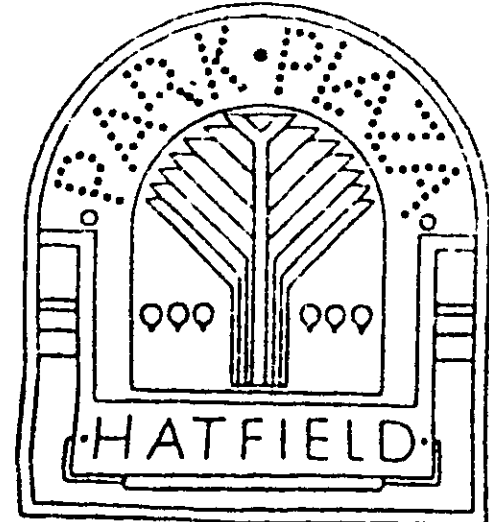
8 MAY 87  
8713/2  
A



WELWYN HATFIELD DISTRICT  
 TOWN & COUNCIL  
 PLANNING DEPARTMENT  
 Date: 30 JUL 1987

WELWYN HATFIELD D.C.  
 RECEIVED 30 JUL 1987  
 6/392/87

**AMENDMENT**



**SITE LAYOUT**

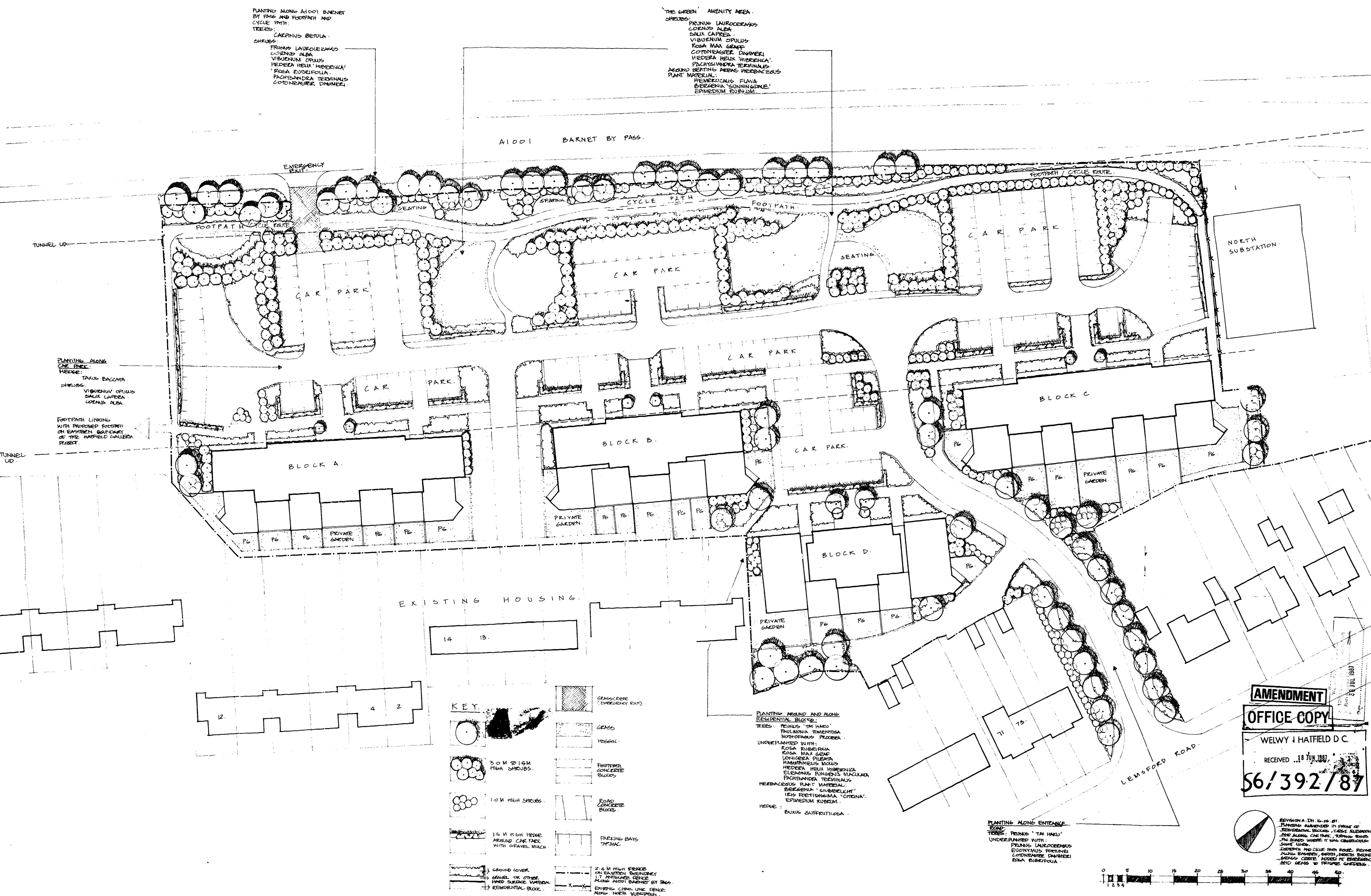
**OFFICE COPY**

Michael Aukett Associates  
 Architects and designers  
 17 Chelsea Embankment London SW3  
 Telephone 01-352-0142  
 Telex 8953482

RESIDENTIAL BLOCK	8 MAY 87
SITE LAYOUT	8713/2
PARK PLAZA HATFIELD	1314

PLANTING ALONG A1001 BARNET BY PASS BY PASS AND FOOTPATH AND CYCLE PATH:  
 TREES: CARPINUS BETULA  
 SHRUBS: PRUNUS LAUROCERASUS, COENOS ALBA, VIBURNUM OPULUS, HEDEERA HELIX 'HIBERNICA', 'ROSEA EUSEIFOLIA', PACHYRANDRA TERMINALIS, COTONEASTER DAMMERI

THE GREEN AMENITY AREA:  
 SHRUBS: PRUNUS LAUROCERASUS, COENOS ALBA, SALIX CAPREA, VIBURNUM OPULUS, ROSA MAX GRACE, COTONEASTER DAMMERI, HEDEERA HELIX 'HIBERNICA', PACHYRANDRA TERMINALIS, JESQU' BERTINGI, HEBEA HEEDACEOUS, PLANT WATERLILY, HEVERICALLIS FLAVA, BERBERIS 'SUNNINGDALE', EPIMEDIUM 'SUNSHINE'



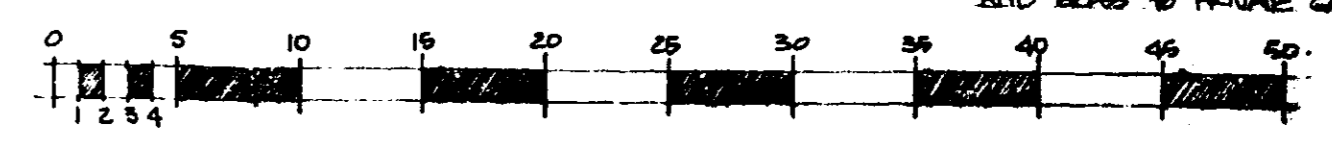
**KEY**

	GRASSCRETE EMERGENCY EXIT
	GRASS
	HEDGE
	3.0 M HIGH SHRUBS
	1.0 M HIGH SHRUBS
	1.5 M HIGH HEDGE AROUND CAR PARKS WITH GRAVEL MULCH
	GROUND COVER
	GROUND COVER WITH WATERLILY PLANT MATERIAL
	CONCRETE BLOCK PAVING
	PARKING BAYS
	2.4 M HIGH FENCE ON EASTERN BOUNDARY OF RESIDENTIAL BLOCKS
	2.4 M HIGH FENCE ALONG A1001 BARNET BY PASS
	EXISTING CHAIN LINE FENCE ALONG NORTH SUBSTATION
	TIMBER PRIVATE GARDEN FENCES

PLANTING AROUND AND ALONG RESIDENTIAL BLOCKS:  
 TREES: PRUNUS 'TAI HAKU', PAULOWNIA TERNSTEDTII, NOTOPANUS FLOREDA  
 UNDERPLANTED WITH:  
 ROSA RUBRIFOLIA, ROSA MAX GRACE, LONICERA PLURIFLORA, RHAMNUS NOLLIUS, HEDEERA HELIX 'HIBERNICA', ELEMENS 'SILBERLICHT', PACHYRANDRA TERMINALIS, HEBERICALLIS FLAVA, BERBERIS 'SUNNINGDALE', HEBEA HEEDACEOUS, EPIMEDIUM 'SUNSHINE', ERIVERNUM KUBIKUM  
 HEDGE: BUXTUS SUFFRUTICOSA

PLANTING ALONG ENTRANCE ROAD:  
 TREES: PRUNUS 'TAI HAKU'  
 UNDERPLANTED WITH:  
 PRUNUS LAUROCERASUS, EUCONYMIUS FORTUNII, COTONEASTER DAMMERI, ROSA RUBRIFOLIA

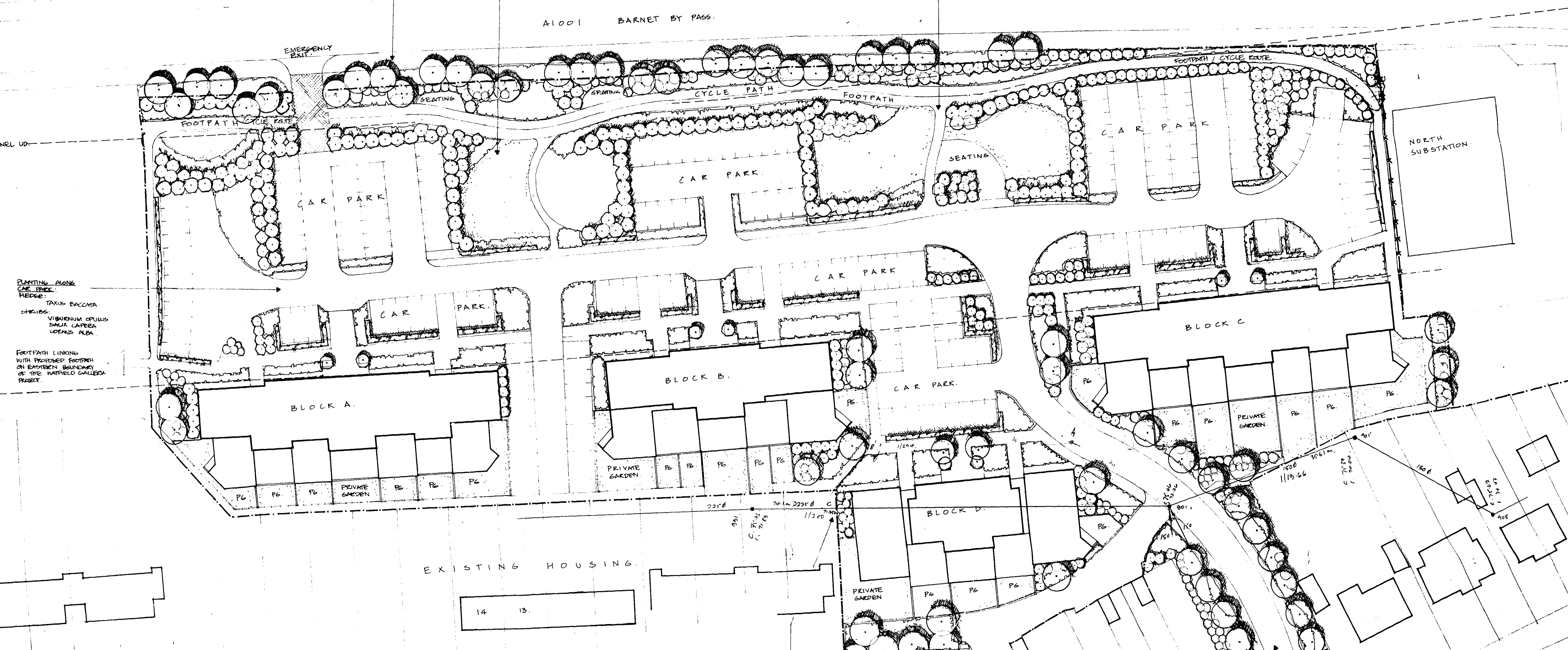
**AMENDMENT**  
**OFFICE COPY**  
 WELWY 4 HATFIELD D.C.  
 RECEIVED 18 JUN 1987  
**56/392/87**



REVISION A: 14.10.87  
 PLANTING AMENDED IN ORDER OF RESIDENTIAL BLOCKS, EXIST. ELEMENS AND ALONG CAR PARKS, 'ROSEA EUSEIFOLIA' IN BLOCKS, 'HEBEA HEEDACEOUS' SHORT LINES.  
 'ERIVERNUM KUBIKUM' AND 'COTONEASTER DAMMERI' PLANTING ALONG ENTRANCE ROAD, NORTH, SOUTH BOUNDARY, 'BERBERIS' CORNER ACROSS THE SUBSTATION, AND ALONG TO PRIVATE GARDENS.

PLANTING ALONG A1001 BARNET BY PASS BY 1985 AND FOOTPATH AND CYCLE PATH:  
 TREES: CAERPIUS BETULA  
 SHRUBS: PRUNUS LAUROCESTRUS, CORONILLA ALBA, VIBURNUM OPULUS, HEDERA HELIX 'HIBERNICA', KOREA RUBROFOLIA, PACHYSAURA TERMINALIS, CORDONARIS DAMMERI

THE GREEN AMENITY AREA:  
 SHRUBS: PRUNUS LAUROCESTRUS, CORONILLA ALBA, SALIX CAPREA, VIBURNUM OPULUS, ROSA MAY GEMME, COTONEGARIS DAMMERI, HEDERA HELIX 'HIBERNICA', PACHYSAURA TERMINALIS, ARUNDINARIA DOUGLASSIANA  
 PLANT MATERIAL: HEMEROCALLIS FLAVA, BEZZERIA SUNNINGDALE, EPIMEDIUM RUBRUM



PLANTING ALONG CAR PARK FENCE:  
 TREES: TAXUS BACCATA  
 SHRUBS: VIBURNUM OPULUS, SALIX CAPREA, CORONILLA ALBA  
 FOOTPATH LINKING WITH PROPOSED FOOTPATH ON EASTERN BOUNDARY OF THE HATFIELD GALLERIA PROJECT

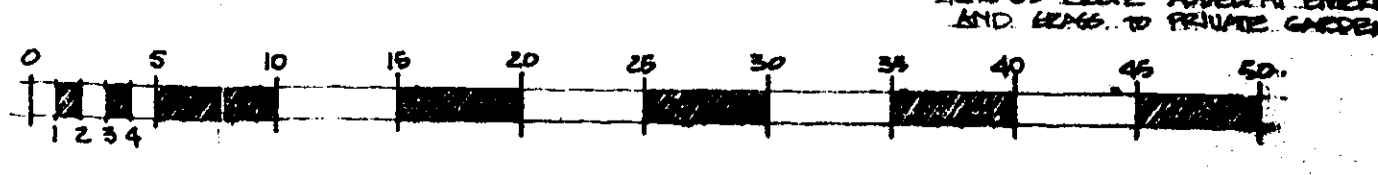
**KEY**

	3.0M HIGH SHRUBS		1.0M HIGH SHRUBS		1.5M HIGH HEDGE AROUND CAR PARK WITH GRAVEL MULCH		GROUND COVER
	2.4M HIGH FENCE OR GARDEN BOUNDARY		2.4M HIGH FENCE WITH CONCRETE BASE		GROUND COVER WITH PLANT MATERIAL		2.4M HIGH FENCE WITH CONCRETE BASE AND TIMBER FENCE
	CONCRETE BLOCK PAVING		ROAD CONCRETE PAVING		FACING BAYS PAVING		TIMBER FENCE
	EMERGENCY EXIT		GARDEN		ROAD CONCRETE PAVING		TIMBER FENCE

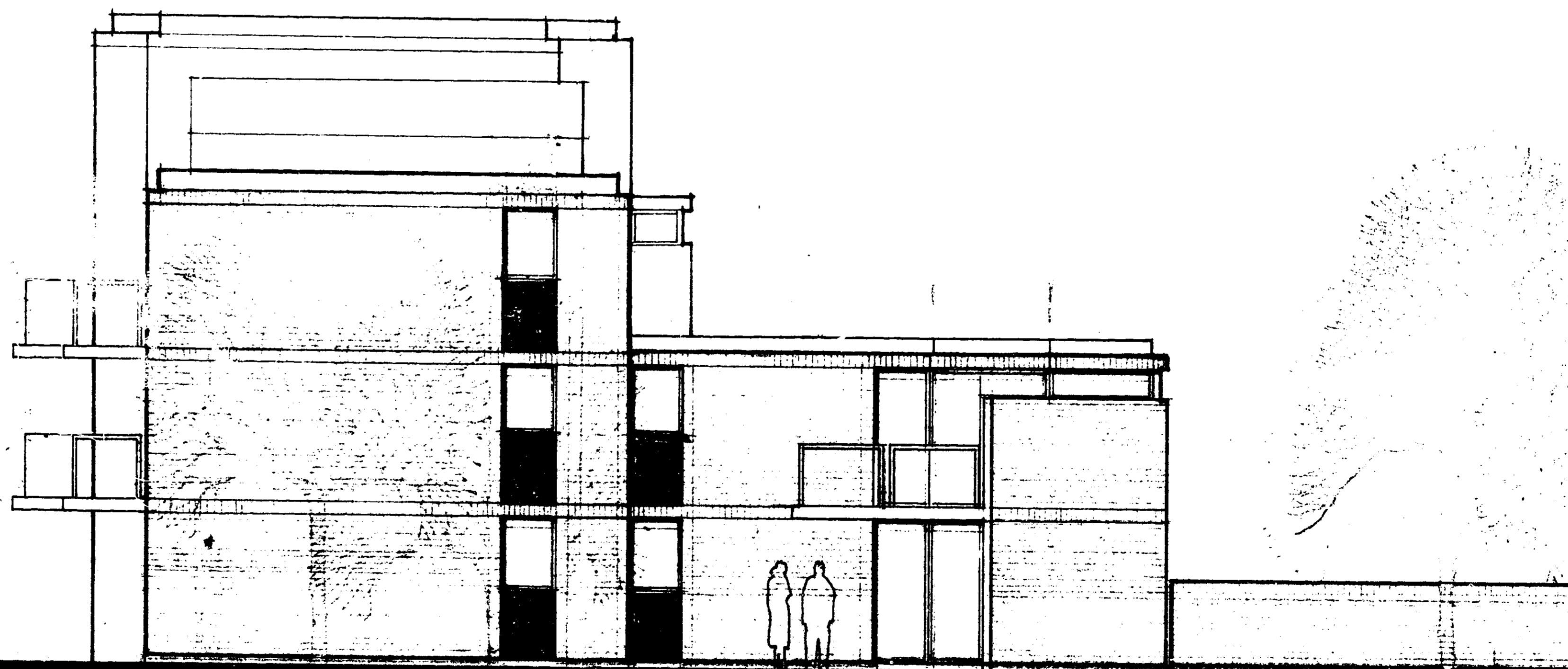
PLANTING ALONG AND AROUND RESIDENTIAL BLOCKS:  
 TREES: PRUNUS 'TAM HAU', PAULOWNIA TOmentosA, NORTHOFAKUS PROCERA  
 UNDERPLANTED WITH:  
 ROSA RUBRIFLORA, ROSA MAY GEMME, LONICERA FLEURA, PACHYSAURA TERMINALIS, HEDERA HELIX 'HIBERNICA', ELEMIS, FUNGUS MACULATA, PACHYSAURA TERMINALIS, BEZZERIA 'SUNNINGDALE', BEZZERIA 'SUNNINGDALE', IEDS FORTISSIMA 'CHINA', EPIMEDIUM RUBRUM  
 HERBES: EUMYR. SUPPILICIA

PLANTING ALONG ENTRANCE:  
 TREES: PRUNUS 'TAM HAU'  
 UNDERPLANTED WITH:  
 PRUNUS LAUROCESTRUS, EUDYMYRUS DAMMERI, CORDONARIS DAMMERI, ROSA RUBRIFLORA

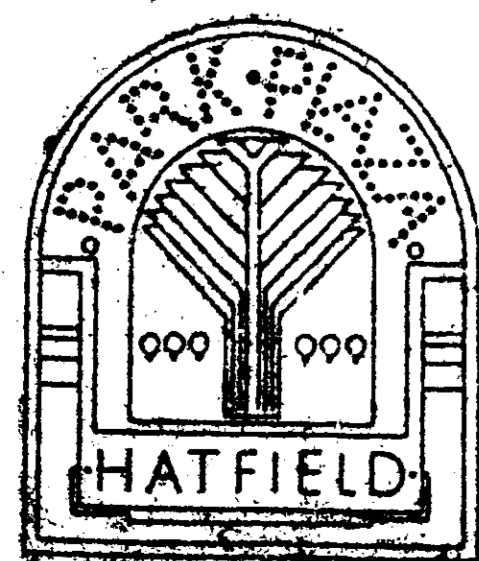
AMENDMENT 1  
 WELWY & HATFIELD D.C.  
 RECEIVED 18 JUN 1987  
 56/392/87



HATFIELD PARK  
 PLANNING STRATEGY  
 Scale: 1:250  
 Date: 12.06.87  
 Clouston



WELWYN HATFIELD D.C.  
 TOWN & COUNTRY PLANNING ACT 1971  
 FIRST REFERRED TO BY COMMITTEE  
 30 JUL 1987  
 Date .....



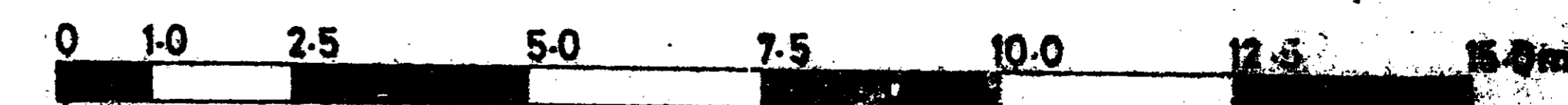
**SOUTH ELEVATION**

**BLOCK C**

WELWYN HATFIELD D.C.  
 RECEIVED.....  
 9 JUL 1987  
 6/392/87

**AMENDMENT**

**OFFICE COPY**



Michael Aukett Associates  
 Architects and designers  
 17 Chelsea Embankment London SW3  
 Telephone 01-362-0142  
 Telex 8823-422

RESIDENTIAL BLOCK C  
 SOUTH ELEVATION  
 PARK PLAZA HATFIELD 1330

MAY 87  
 07/13/87