

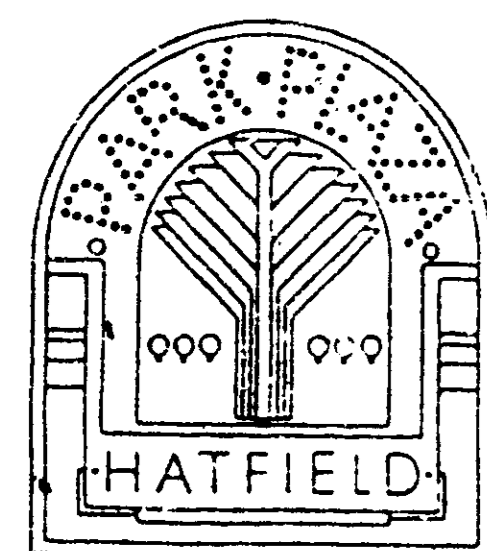
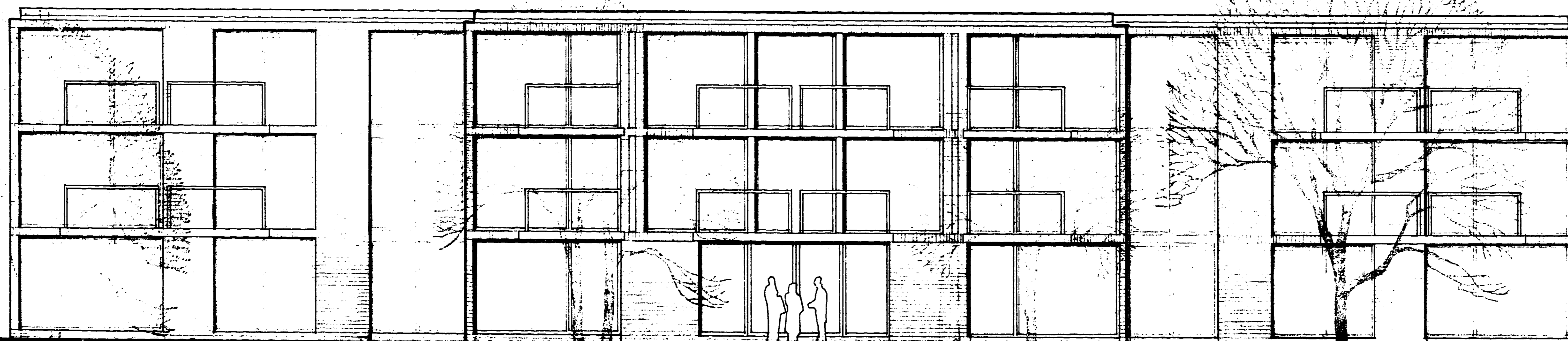
PLANNING FILES

AL (M) HATFIELD/LEMSEFORD RD

S6/392/87

PART 1 OF 2

6/9



**WEST ELEVATION**

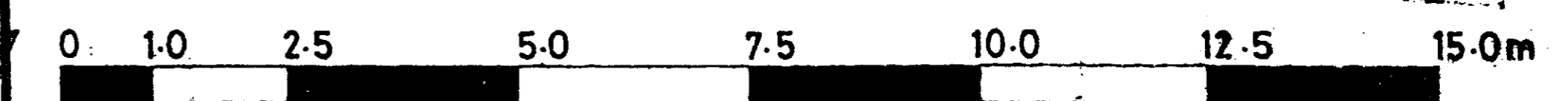
**BLOCK B**

**AMENDMENT**

**WELWYN HATFIELD D.C.**  
 RECEIVED *29 JUL 1987*  
**6/392/87**

**OFFICE COPY**

WELWYN HATFIELD D.C.  
 TOWN & COUNTRY PLANNING ACT 1971  
 PLANNING PERMISSION  
 Date *30 JUL 1987*



Michael Aukett Associates  
 Architects and designers  
 17 Chelsea Embankment London SW3  
 Telephone 01-352-0142  
 Telex 895348Z

RESIDENTIAL BLOCK B  
 WEST ELEVATION  
 PARK PLAZA HATFIELD

8 MAY 87  
 8713/2  
 132 B

3/4 PERSON TWO BEDROOM  
TYPE A

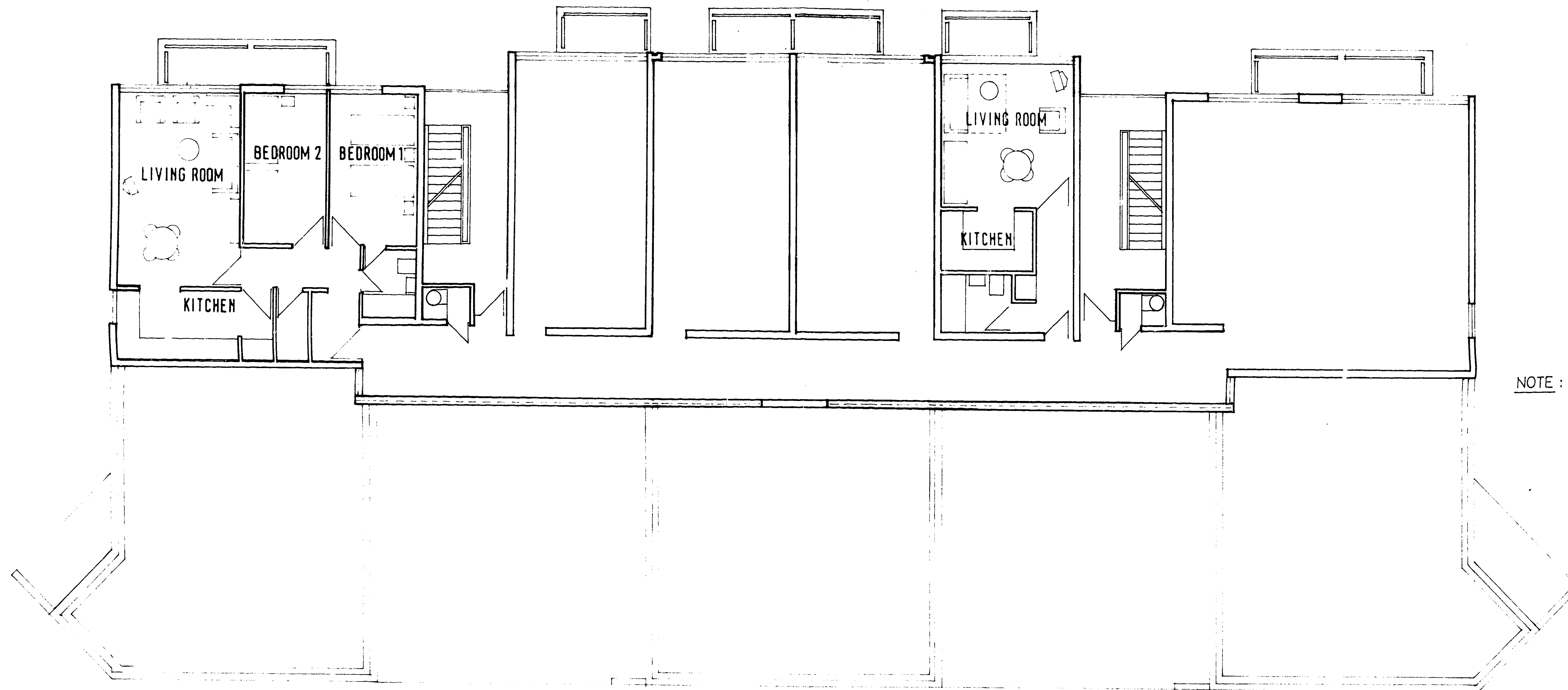
STUDIO FLAT

STUDIO FLAT

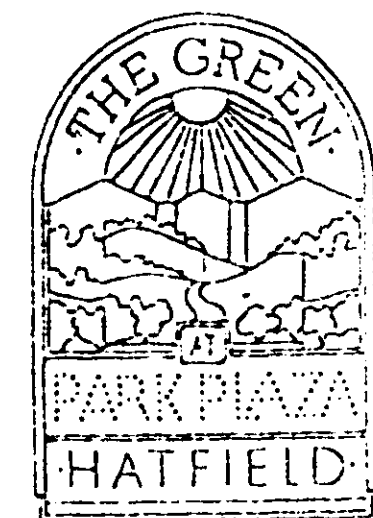
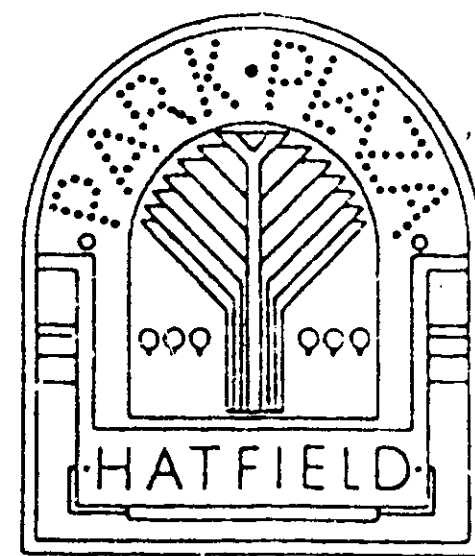
STUDIO FLAT

STUDIO FLAT

3/4 PERSON TWO BEDROOM  
TYPE A



NOTE: Dotted lines within walls denotes high level windows.



SECOND FLOOR PLAN

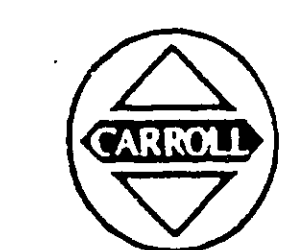
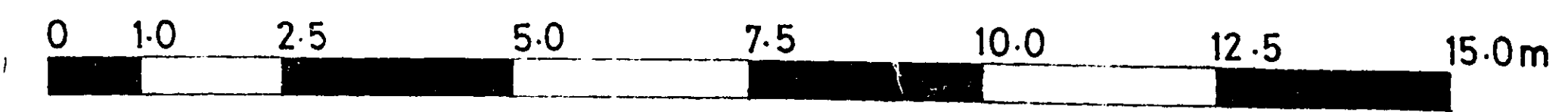
BLOCK B

WELWYN HATFIELD D.C.  
RECEIVED 18 JUL 1987  
**6/392/87**

OFFICE COPY

AMENDMENT

WELWYN HATFIELD D.C.  
TOWN & COUNTRY PLANNING ACT 1971  
PLANNING PERMISSION TO BE CONSIDERED  
Date 30 JUL 1987



Michael Aukett Associates  
Architects and designers  
17 Chelsea Embankment London SW3  
Telephone 01-352 0142  
Telex 8953482

RESIDENTIAL BLOCK B	8 MAY 87
SECOND FLOOR	8713/2
PARK PLAZA HATFIELD	1326



3/4 PERSON TWO BEDROOM  
TYPE A

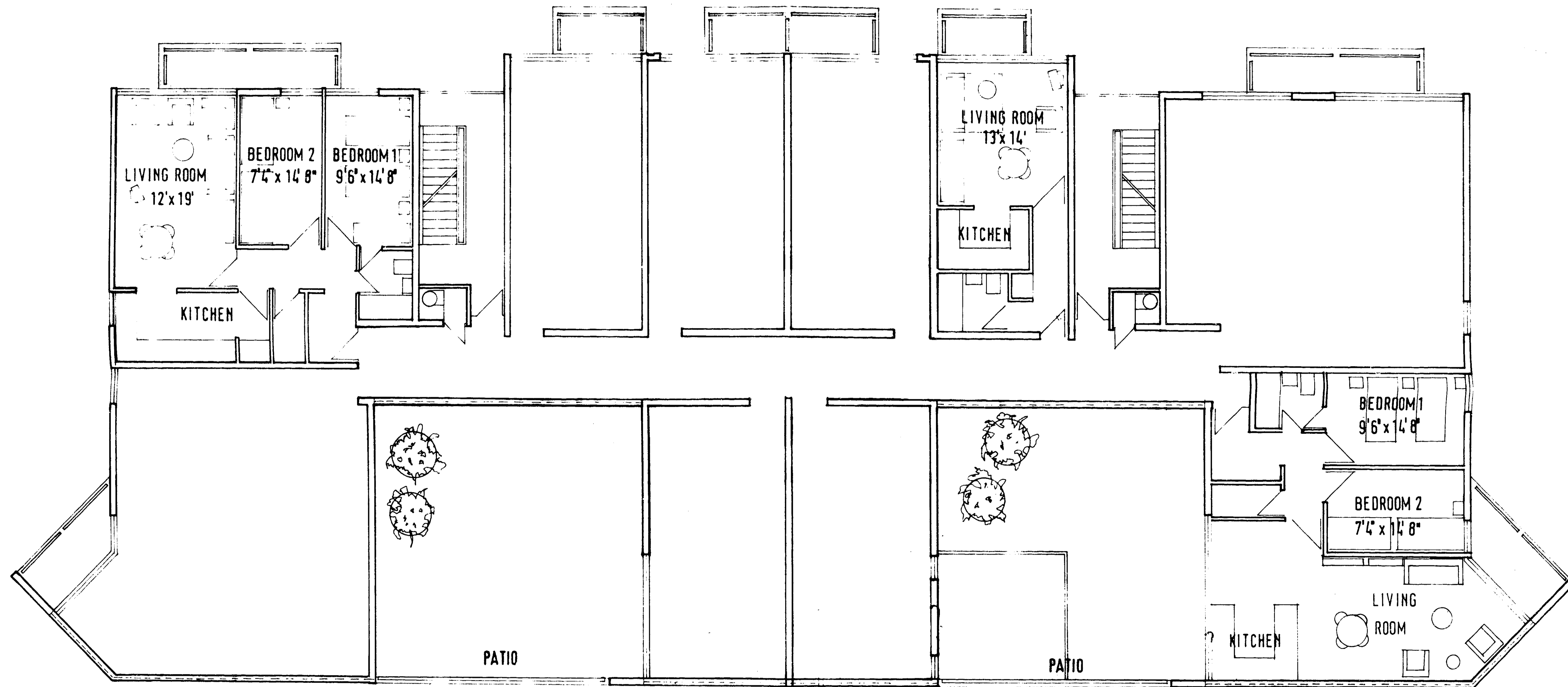
STUDIO FLAT

STUDIO FLAT

STUDIO FLAT

STUDIO FLAT

3/4 PERSON TWO BEDROOM  
TYPE A



**OFFICE COPY**

NOTE: Dotted lines within walls denotes high level windows.

3/4 PERSON TWO BEDROOM  
TYPE A

STUDIO FLAT

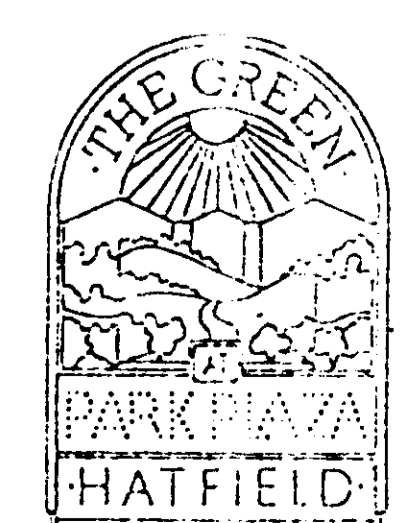
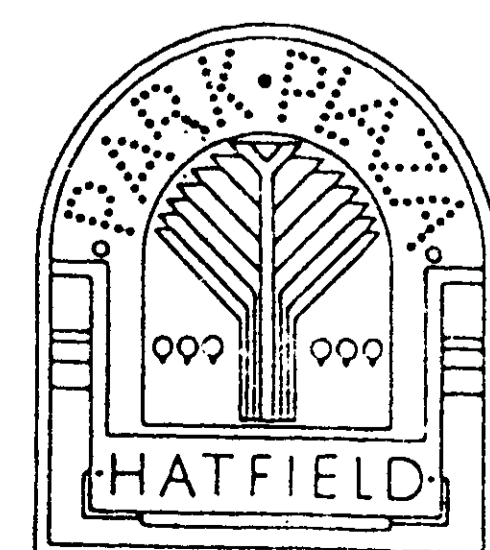
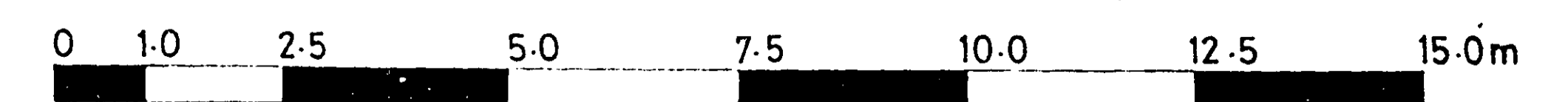
STUDIO FLAT

**AMENDMENT**

3/4 PERSON TWO BEDROOM  
TYPE B

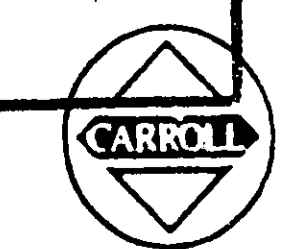
WELWYN HATFIELD D.C.  
RECEIVED: 29 JUL 1987.  
**6/392/87**

WELWYN HATFIELD D.C.  
TOWN & COUNTRY PLANNING ACT 1971  
PLANNING PERMISSION  
Date: 30 JUL 1987



**FIRST FLOOR PLAN**

**BLOCK B**



Michael Aukett Associates  
Architects and designers  
17 Chelsea Embankment London SW3  
Telephone 01-352-0142  
Telex 8953482

RESIDENTIAL BLOCK B	8 MAY 87
FIRST FLOOR	8713/2
PARK PLAZA HATFIELD	1325



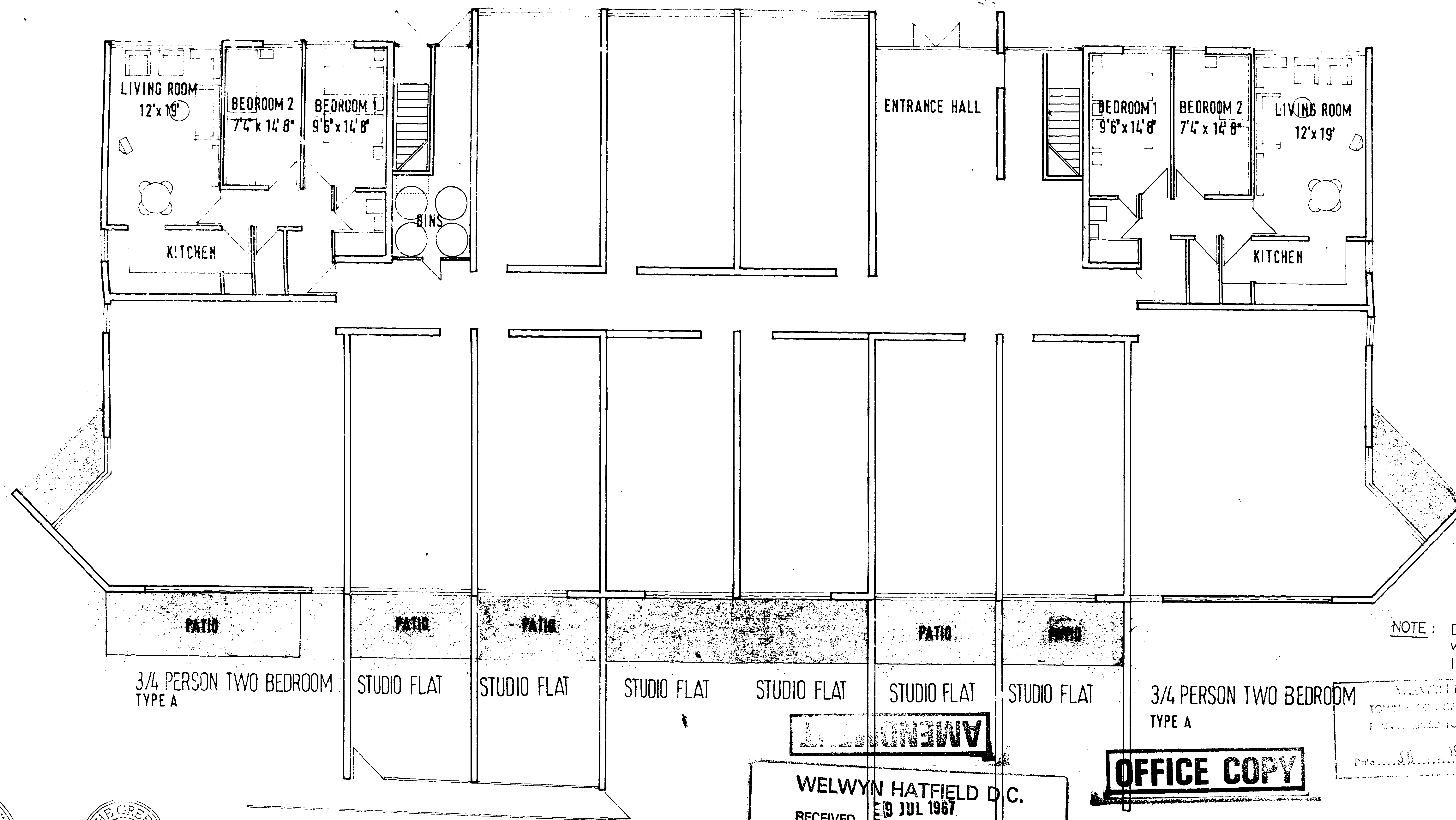
3/4 PERSON TWO BEDROOM  
TYPE A

STUDIO FLAT

STUDIO FLAT

STUDIO FLAT

3/4 PERSON TWO BEDROOM  
TYPE A



NOTE: Dotted lines within walls denotes high level windows.

3/4 PERSON TWO BEDROOM  
TYPE A

STUDIO FLAT

STUDIO FLAT

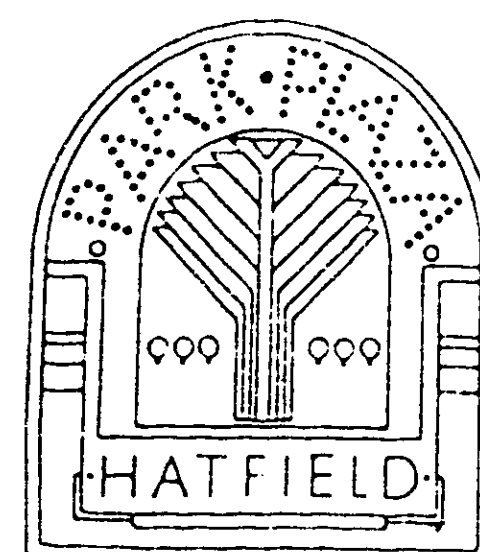
STUDIO FLAT

STUDIO FLAT

STUDIO FLAT

STUDIO FLAT

3/4 PERSON TWO BEDROOM  
TYPE A



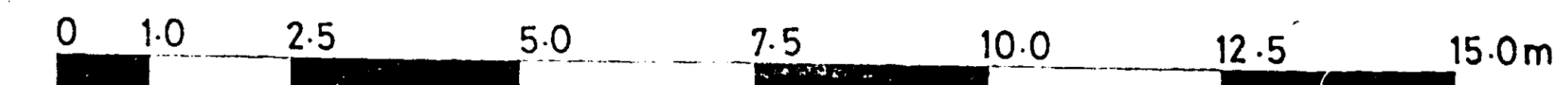
GROUND FLOOR PLAN

BLOCK B

6/392/87

AMENDMENT  
WELWYN HATFIELD D.C.  
RECEIVED... 19 JUL 1987

OFFICE COPY

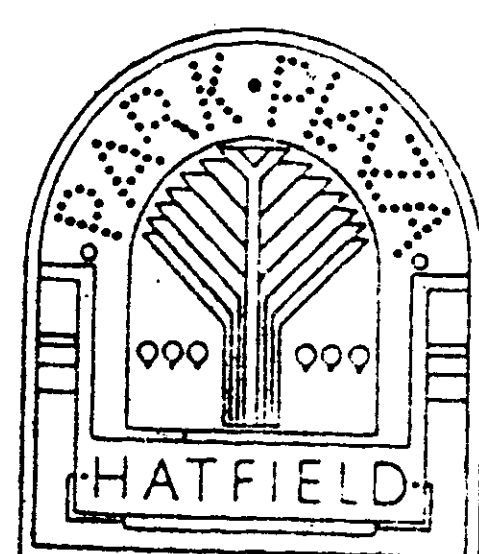
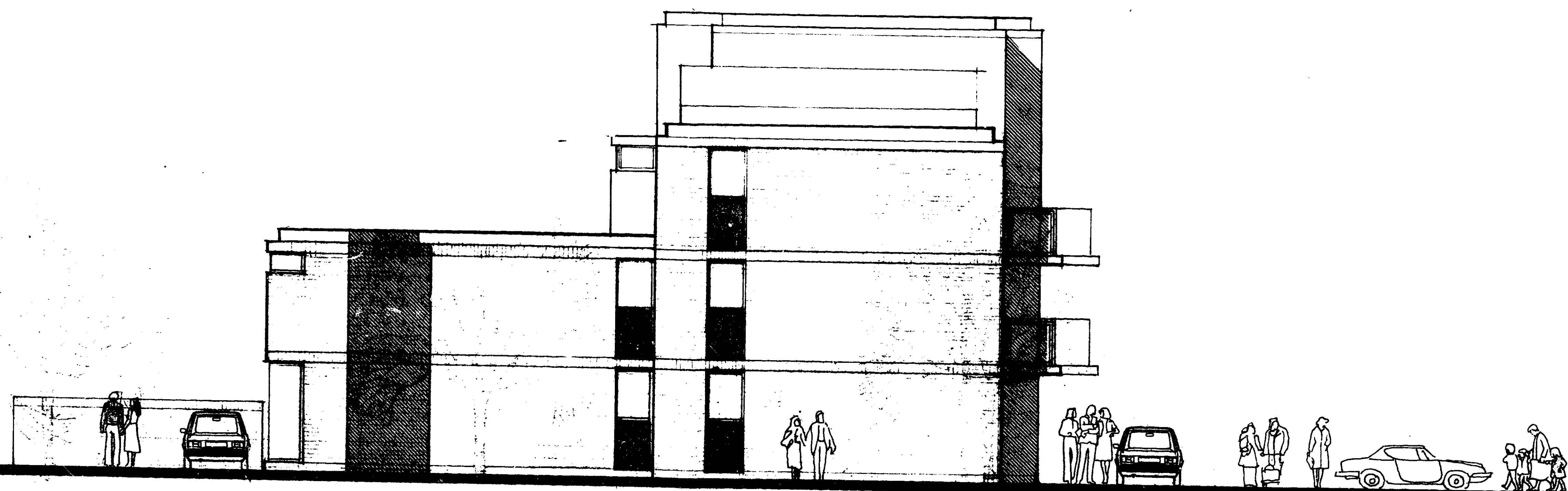


Michael Aukett Associates  
Architects and designers  
17 Chelsea Embankment London SW3  
Telephone 01-352-0142  
Telex 8953482

RESIDENTIAL BLOCK B  
GROUND FLOOR  
PARK PLAZA HATFIELD

8 MAY 87  
8713/2  
1324

WELWYN HATFIELD D.C.  
TOWN CLERK'S OFFICE  
Date 30 JUL 1987



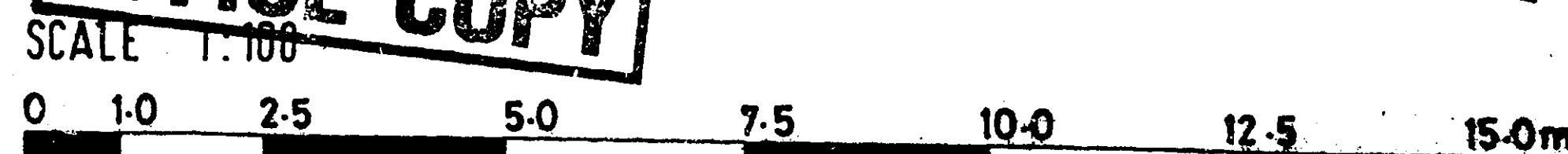
**NORTH ELEVATION      BLOCK A**

WELWYN HATFIELD D.C.  
 RECEIVED... 9 JUL 1987  
**6/392/87**

**AMENDMENT**

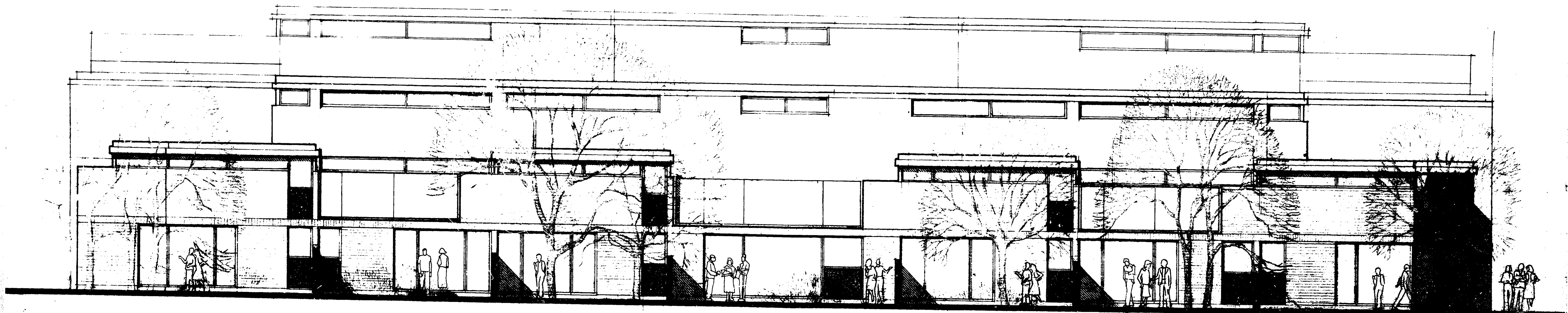
WELWYN HATFIELD D.C.  
 TOWN & COUNTRY PLANNING ACT 1971  
 REFUSED TO BE REGISTERED  
 Date... 30 JUL 1987

**OFFICE COPY**



Michael Aukett Associates  
 Architects and Designers  
 17 Chelsea Embankment London SW3  
 Telephone 01-262-0142  
 Telex 286348Z

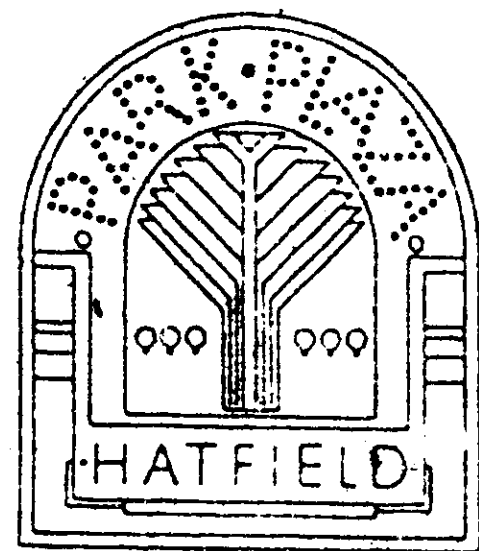
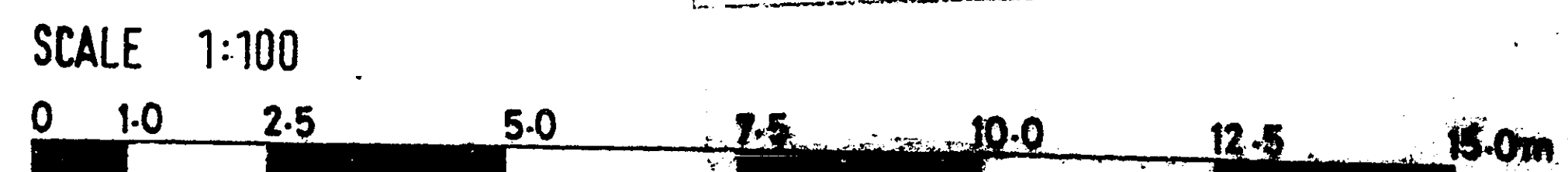
RESIDENTIAL BLOCK A	6 MAY 87
NORTH ELEVATION	6/13/2
PARK PLAZA HATFIELD 1323	A



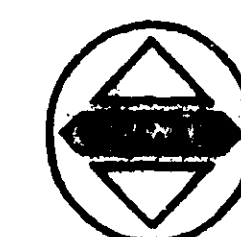
WELWYN HATFIELD D.C.  
 RECEIVED... 9 JUL 1987  
 6/392/87

**AMENDMENT**  
**OFFICE COPY**

WELWYN HATFIELD D.C.  
 TOWN & COUNCILY PLANNING ACT 1971  
 PLAN REFERRED TO IN CONSULTATION  
 30 JUL 1987  
 Date .....



**EAST ELEVATION**      **BLOCK A**



Michael Ashcott Associates  
 Architects and designers  
 17 Chelsea Embankment London SW3  
 Telephone 01-262-0142  
 Telex 8083462

RESIDENTIAL BLOCK A  
 EAST ELEVATION  
 PARK PLAZA HATFIELD 1322 A