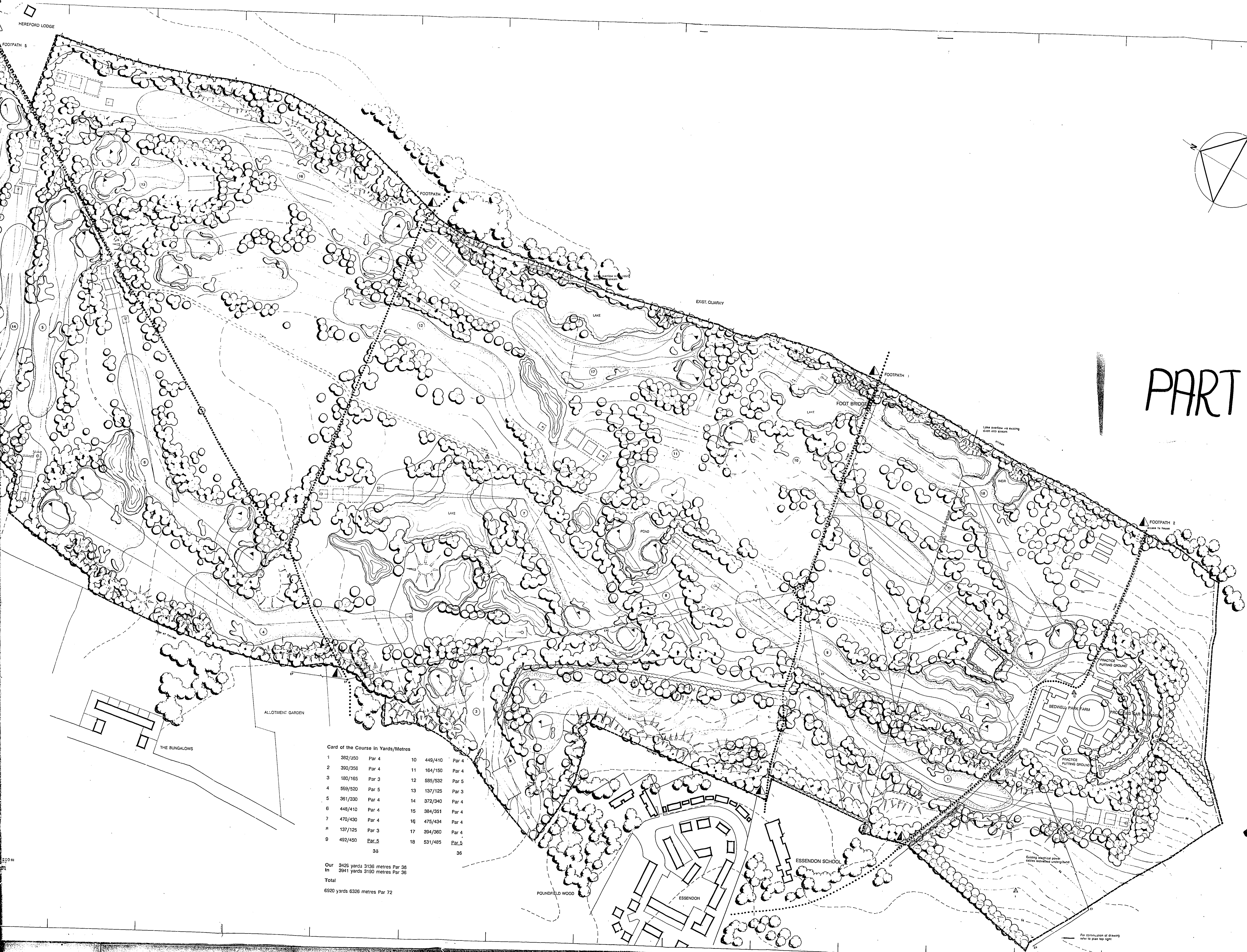


PLANNING FILES, PLANS ONLY C6/135/87 2/7



PART 2

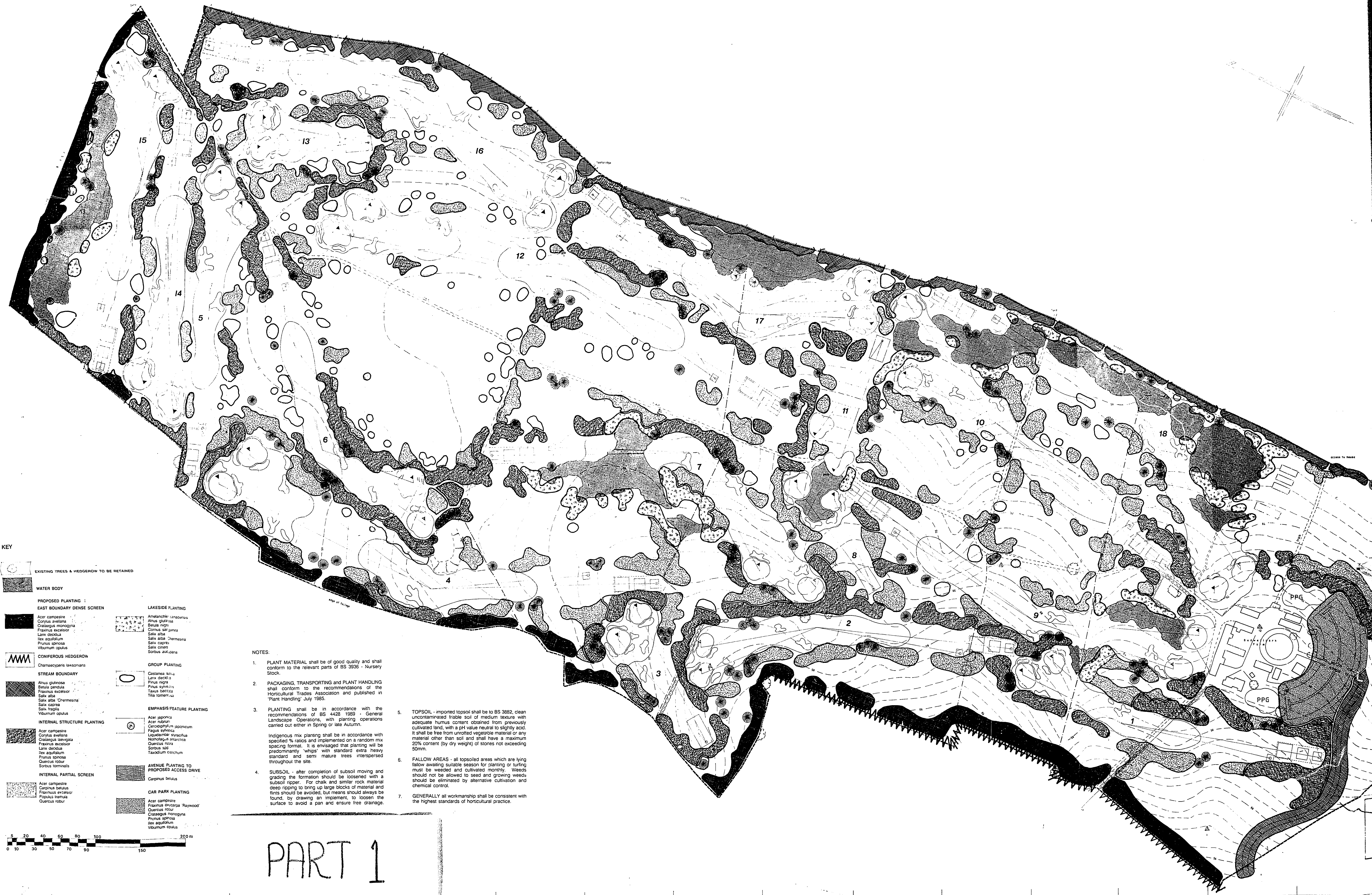
Card of the Course in Yards/Metres

1	382/350	Par 4	10	449/410	Par 4
2	390/356	Par 4	11	184/150	Par 4
3	180/165	Par 3	12	585/532	Par 5
4	589/520	Par 5	13	137/125	Par 3
5	361/330	Par 4	14	372/340	Par 4
6	448/410	Par 4	15	384/351	Par 4
7	470/430	Par 4	16	475/434	Par 4
8	137/125	Par 3	17	394/360	Par 4
9	492/450	Par 5	18	531/485	Par 5
		35			35

Our 3425 yards 3136 metres Par 35  
 In 3941 yards 3590 metres Par 36  
 Total 6920 yards 6326 metres Par 72

C	100-50 LAYOUT LAYERS P. 2
B	APPROXIMATE GREENS TO BE LAYED
A	PAN 90 LAYOUT CHANGE
	Date: _____
Client: TOKYO LEISURE	
JOB Title: <b>AMENLA</b>	
HATFIELD LONDON COUNTRY CLUB	
COURSE EXTENSION	
Drawing Title: MASTER PLAN	
<b>6/135/87</b>	
Scale:	1:1250
Date:	7.83
Drawn by:	
Dwg. No.	096.001.002
Rev.	C

A0 A1 A2 A3 A4 A5 A6 A7 A8 A9 A0

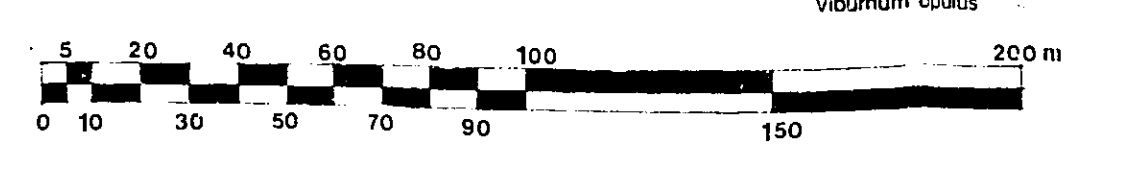


**KEY**

- EXISTING TREES & HEDGEROW TO BE RETAINED
- WATER BODY
- PROPOSED PLANTING :**
- EAST BOUNDARY DENSE SCREEN
  - Acer campestre
  - Corylus avellana
  - Crataegus monogyna
  - Fraxinus excelsior
  - Larix decidua
  - Ilex aquifolium
  - Prunus spinosa
  - Viburnum opulus
- CONIFEROUS HEDGEROW
  - Chamaecyparis lasiocarpa
- STREAM BOUNDARY
  - Alnus glutinosa
  - Betula pendula
  - Fraxinus excelsior
  - Salix alba
  - Salix alba 'Chrysantha'
  - Salix caprea
  - Salix nigra
  - Viburnum opulus
- INTERNAL STRUCTURE PLANTING
  - Acer campestre
  - Corylus avellana
  - Fraxinus excelsior
  - Prunus spinosa
  - Ilex aquifolium
  - Quercus robur
  - Sorbus tormalis
- INTERNAL PARTIAL SCREEN
  - Acer campestre
  - Carpinus betulus
  - Fraxinus excelsior
  - Quercus robur
- LAKESIDE PLANTING
  - Amelanchier canadensis
  - Betula nigra
  - Cornus stolonifera
  - Salix alba
  - Salix alba 'Nana'
  - Salix caprea
  - Salix cinerea
  - Sorbus alba
- GROUP PLANTING
  - Castanea sativa
  - Larix decidua
  - Pinus nigra
  - Pinus sylvestris
  - Taxus baccata
  - Tilia tomentosa
- EMPHASIS FEATURE PLANTING
  - Acer platanoides
  - Acer rubrum
  - Caracanthus japonicum
  - Fagus sylvatica
  - Liquidambar styraciflua
  - Nyctaginia aquatica
  - Quercus robur
  - Sorbus aucuparia
  - Taxodium distichum
- AVENUE PLANTING TO PROPOSED ACCESS DRIVE
  - Carpinus betulus
- CAR PARK PLANTING
  - Acer campestre
  - Fraxinus excelsior
  - Crataegus monogyna
  - Prunus spinosa
  - Ilex aquifolium
  - Viburnum opulus

**NOTES**

1. PLANT MATERIAL shall be of good quality and shall conform to the relevant parts of BS 3936 - Nursery Stock.
2. PACKAGING, TRANSPORTING and PLANT HANDLING shall conform to the recommendations of the Horticultural Trades Association and published in 'Plant Handling' July 1985.
3. PLANTING shall be in accordance with the recommendations of BS 4428 1989 - General Landscape Operations, with planting operations carried out either in Spring or late Autumn.  
Indigenous mix planting shall be in accordance with specified % ratios and implemented on a random mix spacing format. It is envisaged that planting will be predominantly 'whips' with standard extra heavy standard and semi mature trees interspersed throughout the site.
4. SUBSOIL - after completion of subsoil moving and grading the formation should be loosened with a subsoil ripper. For chalk and similar rock material deep ripping to bring up large blocks of material and fins should be avoided, but means should always be found, by drawing an implement, to loosen the surface to avoid a pan and ensure free drainage.
5. TOPSOIL - imported topsoil shall be to BS 3882, clean uncontaminated friable soil of medium texture with adequate humus content obtained from previously cultivated land, with a pH value neutral to slightly acid. It shall be free from unrotted vegetable material or any material other than soil and shall have a maximum 20% content (by dry weight) of stones not exceeding 50mm.
6. FALLOW AREAS - all topsoiled areas which are lying fallow awaiting suitable season for planting or turfing must be weeded and cultivated monthly. Weeds should not be allowed to seed and growing weeds should be eliminated by alternative cultivation and chemical control.
7. GENERALLY all workmanship shall be consistent with the highest standards of horticultural practice.



PART 1

# PART 2



### NOTES:

1. PLANT MATERIAL shall be of good quality and shall conform to the relevant parts of BS 3335 - Nursery Stock.
2. PACKAGING, TRANSPORTING and PLANT HANDLING shall conform to the recommendations of the Horticultural Trades Association and published in 'Plant Handling' July 1985.
3. PLANTING shall be in accordance with the recommendations of BS 4428 1989 - General Landscape Operations, with planting operations carried out either in Spring or late Autumn.  
Indigenous mix planting shall be in accordance with specified % ratios and implemented on a random mix spacing format. It is envisaged that planting will be predominantly 'wet' with standard extra heavy standard and semi mature trees interspersed throughout the site.
4. SUBSOIL - after completion of subsoil moving and grading the formation should be loosened with a subsoil ripper. For chalk and similar rock material deep ripping to bring up large blocks of material and firms should be avoided, but means should always be found, by drawing an implement, to loosen the surface to avoid a pan and ensure free drainage.
5. TOPSOIL - imported topsoil shall be to BS 3882, clean uncontaminated friable soil of medium texture with adequate humus content obtained from previously cultivated land, with a pH value neutral to slightly acid. It shall be free from unrotted vegetable material or any material other than soil and shall have a maximum 20% content (by dry weight) of stones not exceeding 50mm.
6. FALLOW AREAS - all topsoiled areas which are lying fallow awaiting suitable season for planting or turfing must be weeded and cultivated monthly. Weeds should not be allowed to seed and growing weeds should be eliminated by alternative cultivation and chemical control.
7. GENERALLY all workmanship shall be consistent with the highest standards of horticultural practice.

Client	TOKYO LEISURE
Date	
Revisions	

Job Title	HATFIELD LONDON COUNTRY CLUB
Course	COURSE EXTENSION

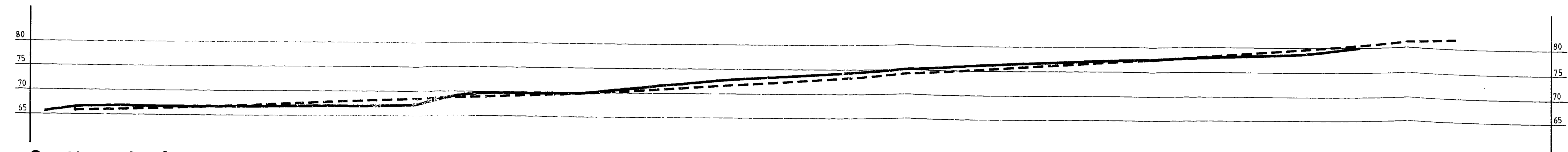
Drawing Title	LANDSCAPE STRATEGY
Scale	AS SHOWN

AMENDMENT 1/250

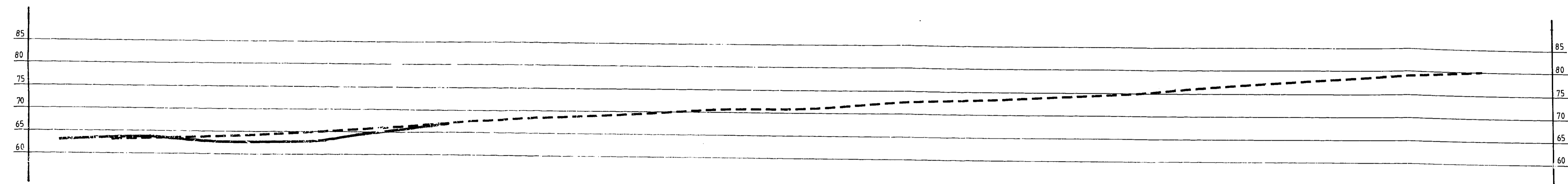
WELWYN HATFIELD  
- 3 MAY 89  
6/135/8

Drawn by	7.89	Drawn by	
Check by		Check by	
Scale	096.001.003	Scale	
Drawn by		Drawn by	

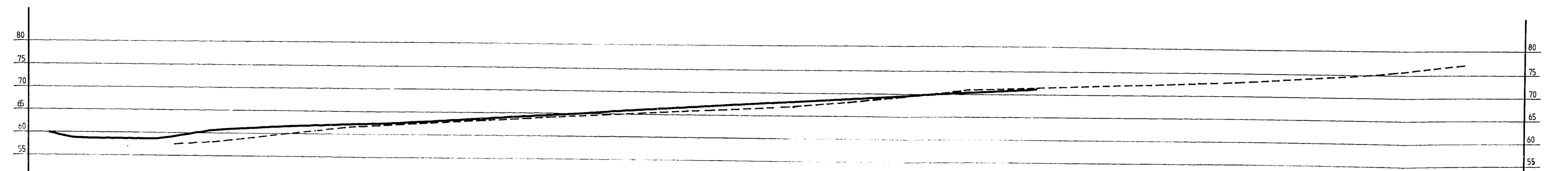
Notes:  
All dimensions must be checked on site and not scaled from this drawing.



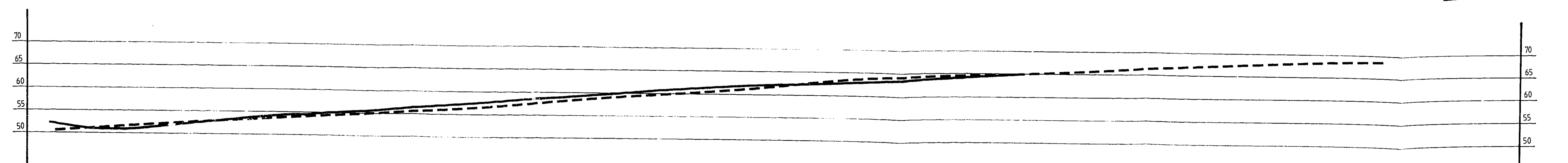
Section A-A



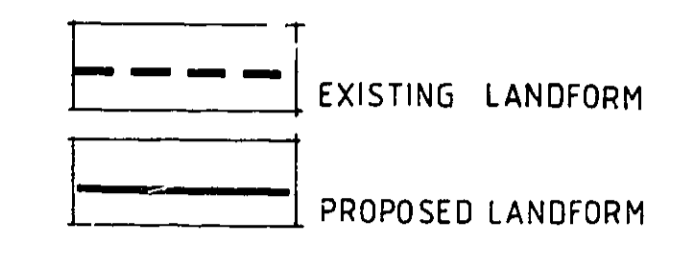
Section B-B



Section C-C



Section D-D



OFFICE COPY

AMENDMENT

A	Date	Revisions

Client  
**TOKYO LEISURE**

Job Title  
**Hatfield London Country Club Course Extension**

Drawing Title  
**Sections**

Scale  
1:500

Date  
04.90

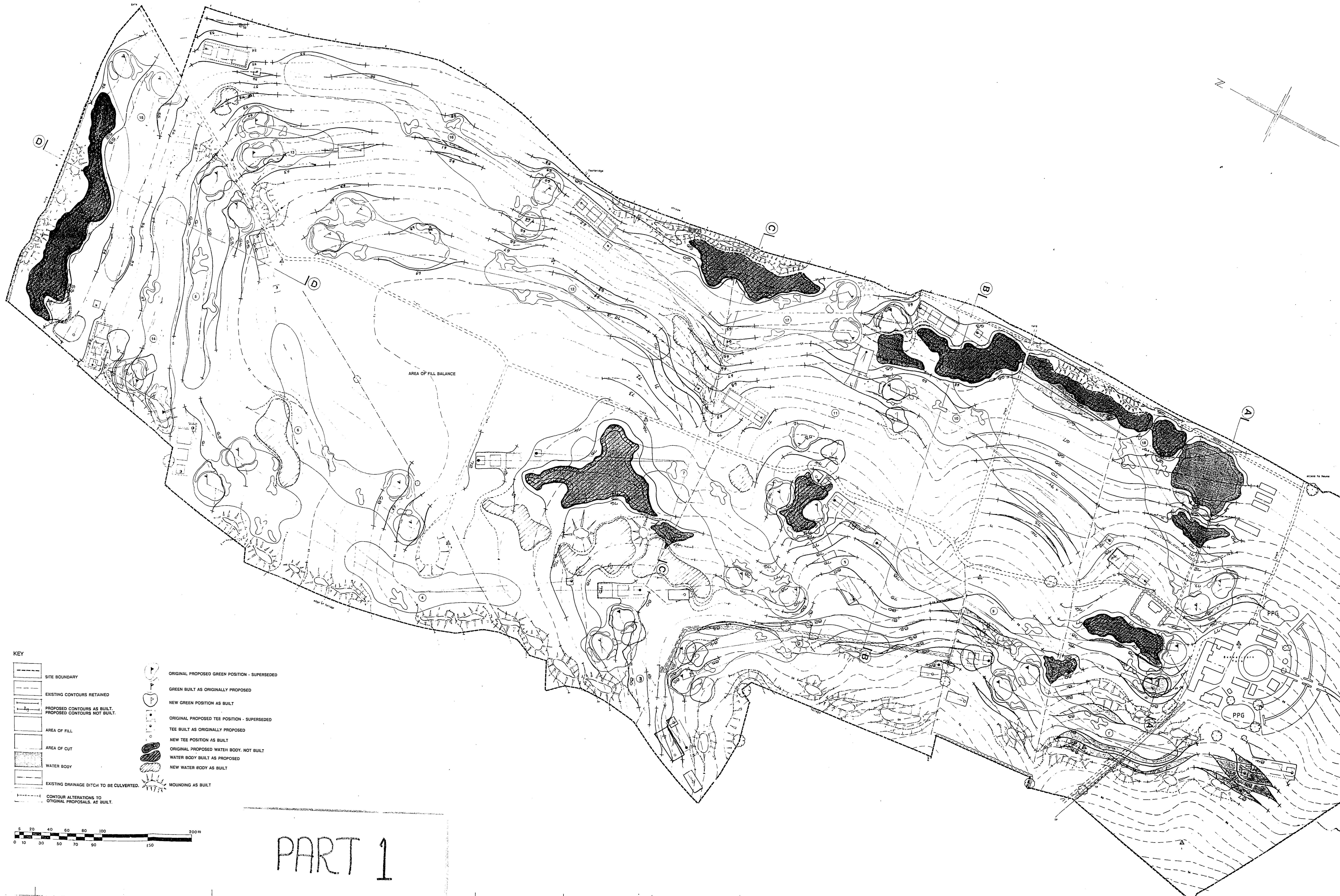
Drawn by  
RS

Orig. No.  
096 001.0 06

Rev.

WELWYN HATFIELD D.C.  
RECEIVED - 3 MAY 1990  
**6/135/87**

COPYRIGHT



- KEY**
- SITE BOUNDARY
  - EXISTING CONTOURS RETAINED
  - PROPOSED CONTOURS AS BUILT, PROPOSED CONTOURS NOT BUILT.
  - AREA OF FILL
  - AREA OF CUT
  - WATER BODY
  - EXISTING DRAINAGE DITCH TO BE CULVERTED.
  - CONTOUR ALTERATIONS TO ORIGINAL PROPOSALS, AS BUILT.
  - ORIGINAL PROPOSED GREEN POSITION - SUPERSEDED
  - GREEN BUILT AS ORIGINALLY PROPOSED
  - NEW GREEN POSITION AS BUILT
  - ORIGINAL PROPOSED TEE POSITION - SUPERSEDED
  - TEE BUILT AS ORIGINALLY PROPOSED
  - NEW TEE POSITION AS BUILT
  - ORIGINAL PROPOSED WATER BODY, NOT BUILT
  - WATER BODY BUILT AS PROPOSED
  - NEW WATER BODY AS BUILT
  - MOUNDING AS BUILT

PART 1



PART 2

- ORIGINAL PROPOSED GREEN POSITION - SUPERSEDED
- GREEN BUILT AS ORIGINALLY PROPOSED
- NEW GREEN POSITION AS BUILT
- ORIGINAL PROPOSED TEE POSITION - SUPERSEDED
- TEE BUILT AS ORIGINALLY PROPOSED
- NEW TEE POSITION AS BUILT
- ORIGINAL PROPOSED WATER BODY, NOT BUILT
- WATER BODY BUILT AS PROPOSED
- NEW WATER BODY AS BUILT
- MOUNDING AS BUILT

200 M

Client	Date	Revisions
TOKYO LEISURE		
<b>OFFICE COPY</b>		
JOB TITLE		
HATFIELD LONDON COUNTRY CLUB		
COURSE EXTENSION		
Drawing Title		
EARTHWORK/CUT & FILL		
AS BUILT		
<b>6/175/87</b>		
Scale 1:1250		
Date 11.80	Drawn by	
Orig. No. 096.001.012.	Rev.	

