

56/0368/85

NORTHAW PLACE, COOPERS LANE NORTHAW

3/4

WELWYN HATFIELD D.C.  
 22 FEB 1979

Notes  
 1. Material specified in the Bill of Materials  
 2. The above is a preliminary drawing and is subject to change without notice.  
 3. The above is a preliminary drawing and is subject to change without notice.  
 4. The above is a preliminary drawing and is subject to change without notice.  
 5. The above is a preliminary drawing and is subject to change without notice.  
 6. The above is a preliminary drawing and is subject to change without notice.  
 7. The above is a preliminary drawing and is subject to change without notice.  
 8. The above is a preliminary drawing and is subject to change without notice.  
 9. The above is a preliminary drawing and is subject to change without notice.  
 10. The above is a preliminary drawing and is subject to change without notice.

OFFICE COPY

WELWYN HATFIELD D.C.  
 RECEIVED 26 JAN 1979  
 N6/59 /79

- Amendments
- A
  - B
  - C
  - D
  - E
  - F
  - G
  - H
  - J
  - K
  - L
  - M

Louis de Soissons Partnership

Mutland Bank Chambers Welwyn Garden City Herts 23806

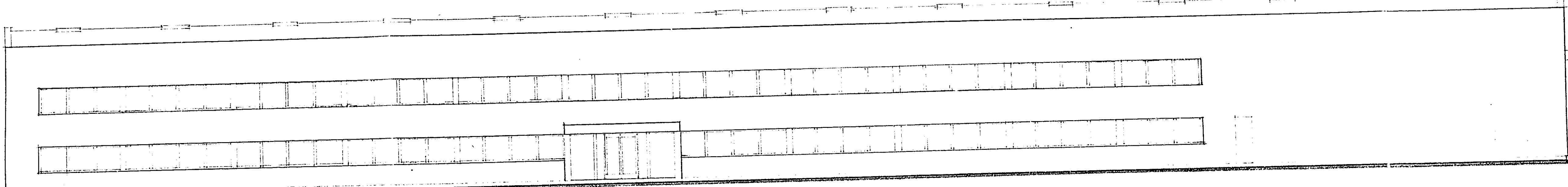
Contract  
 Loctite Distribution Centre  
 WATCHMEAD W. G. C.

Drawing  
 Elevations and Sections

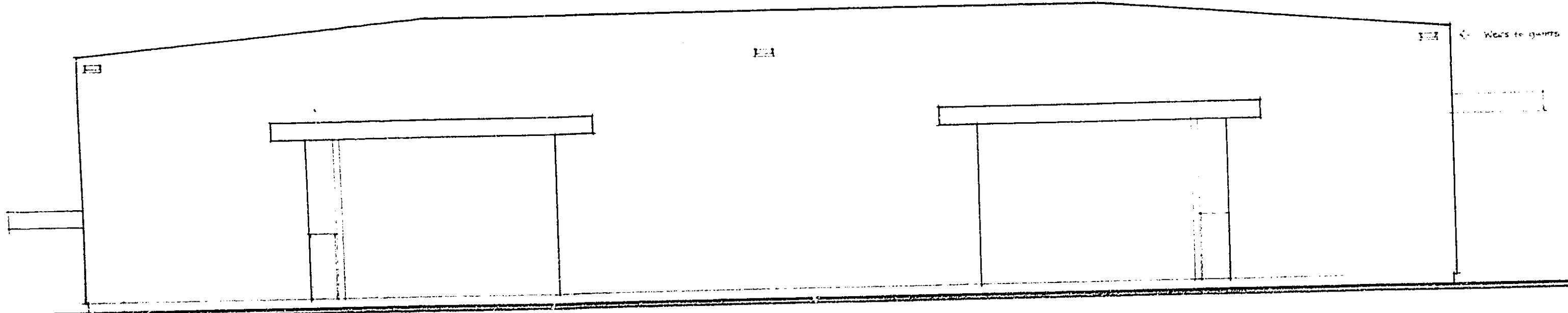
Scale 1:100 Date Jan 79

Drawn E.S.W. Checked

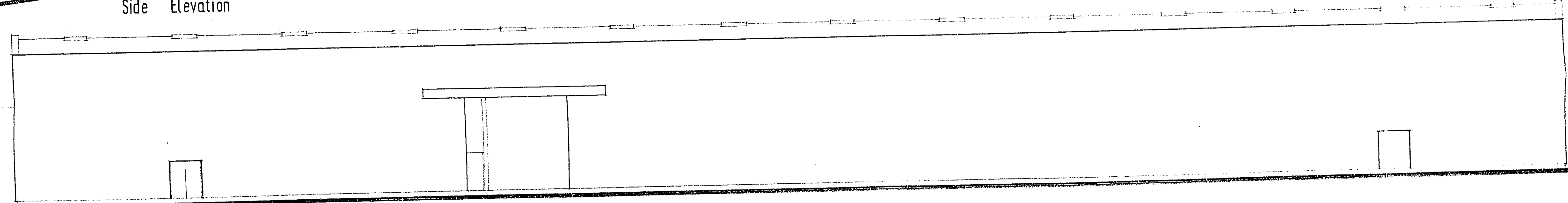
Drawing No 227 | H | 22A



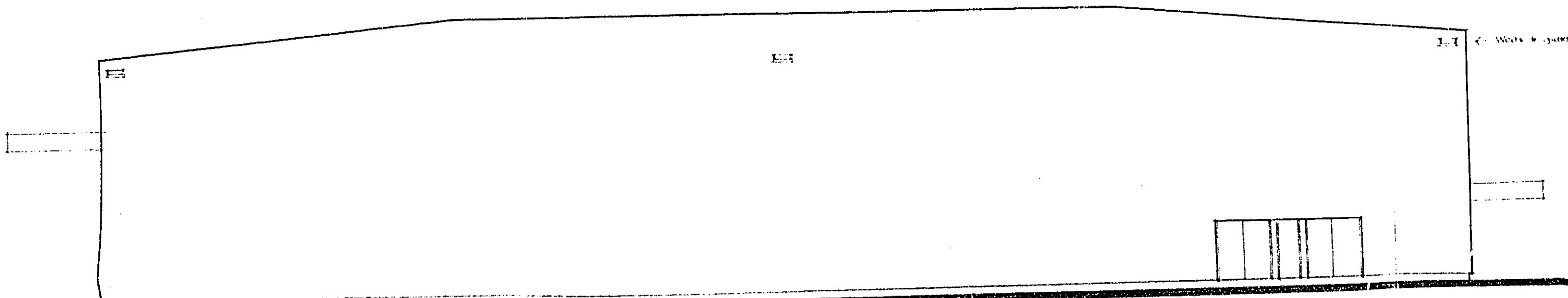
Elevation to Watchmead



Side Elevation

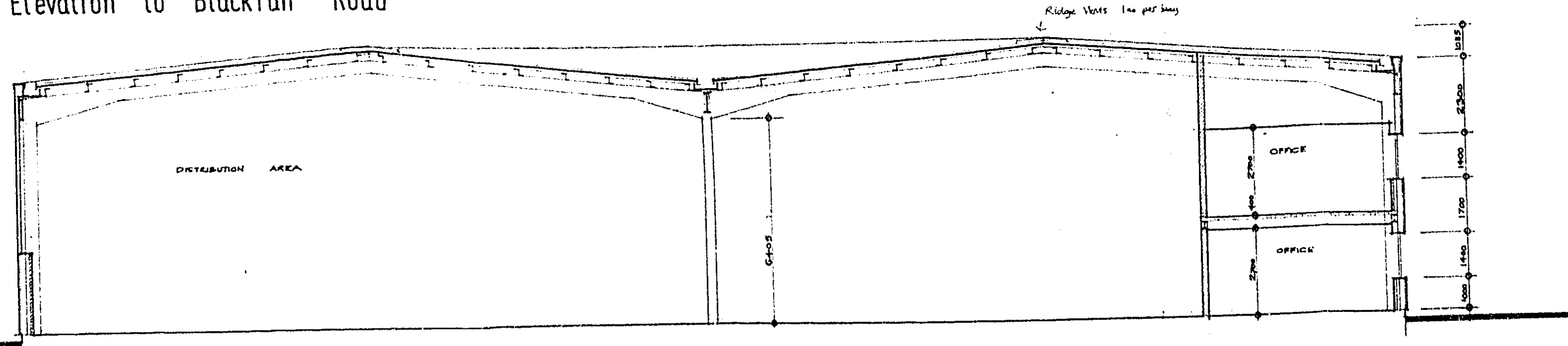


Rear Elevation



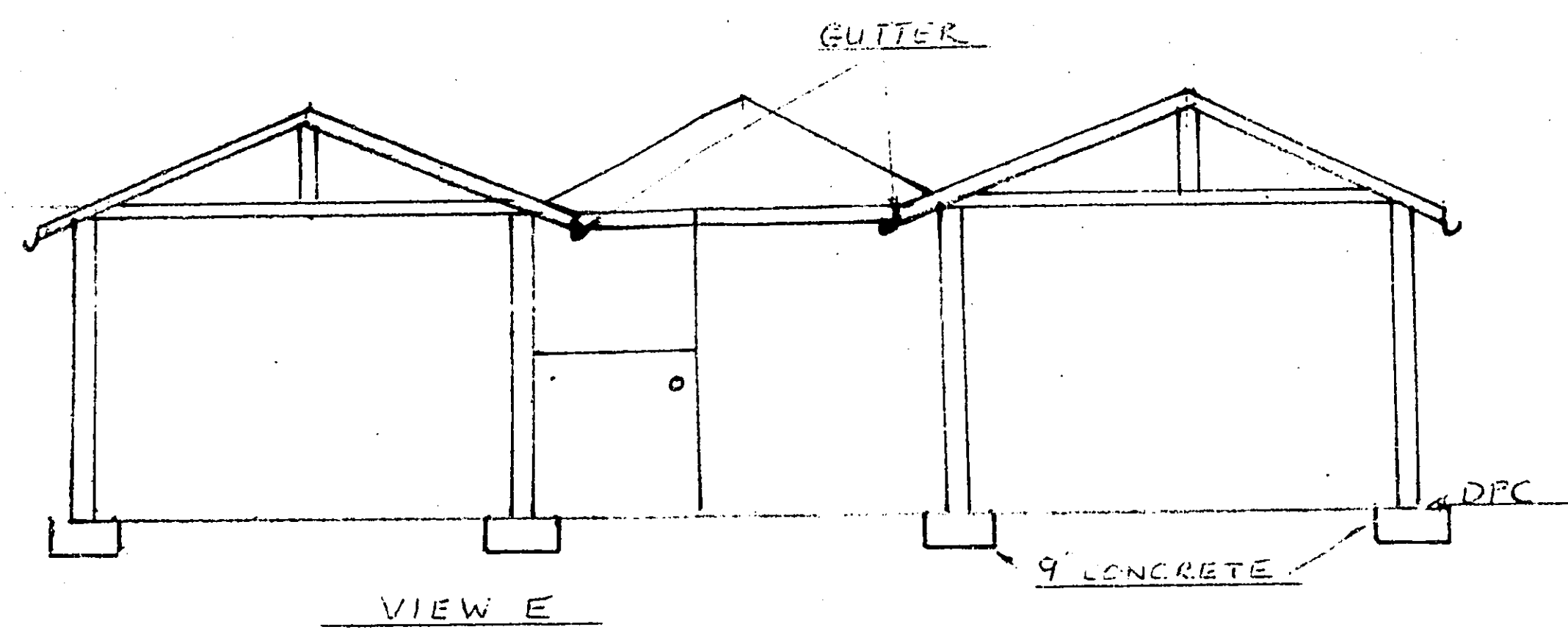
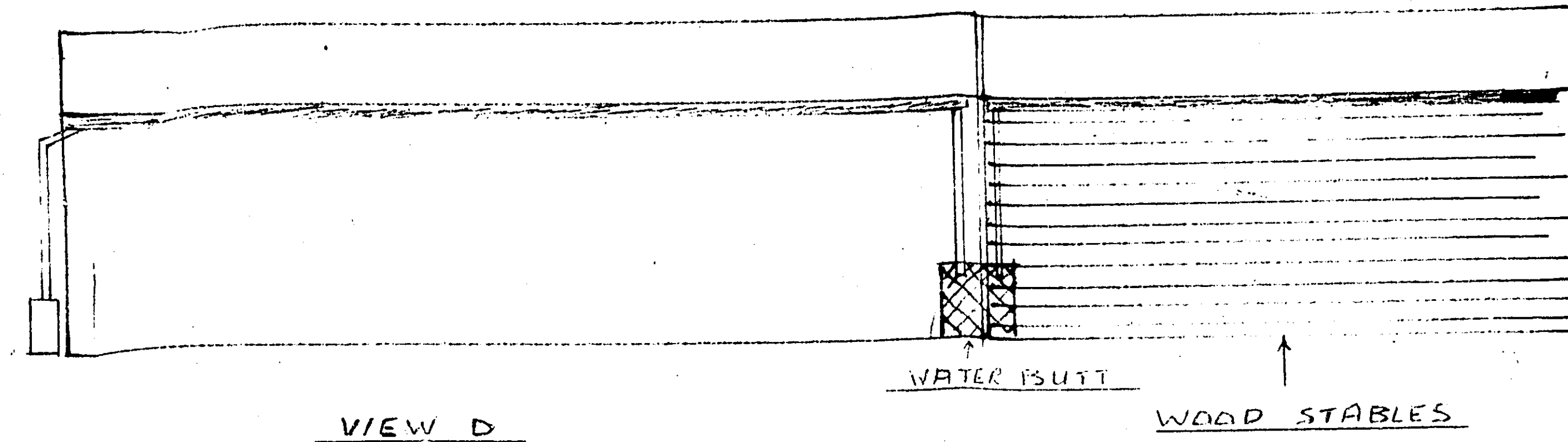
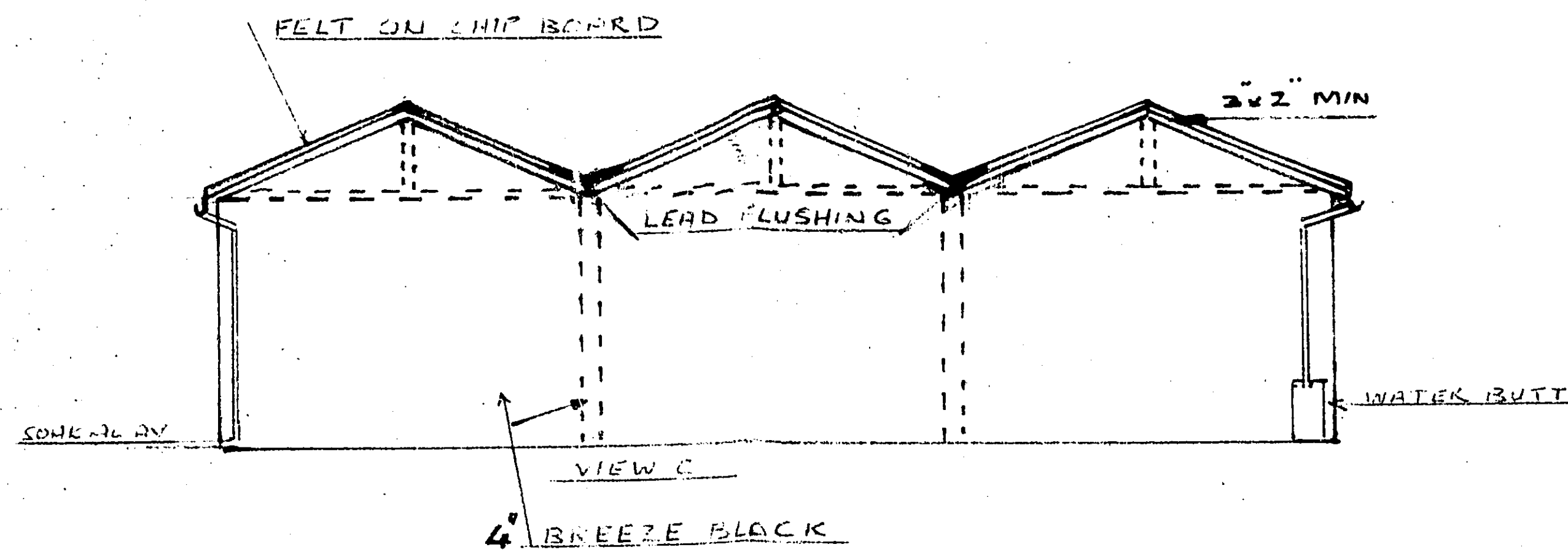
Elevation to Blackfan Road

Watchmead



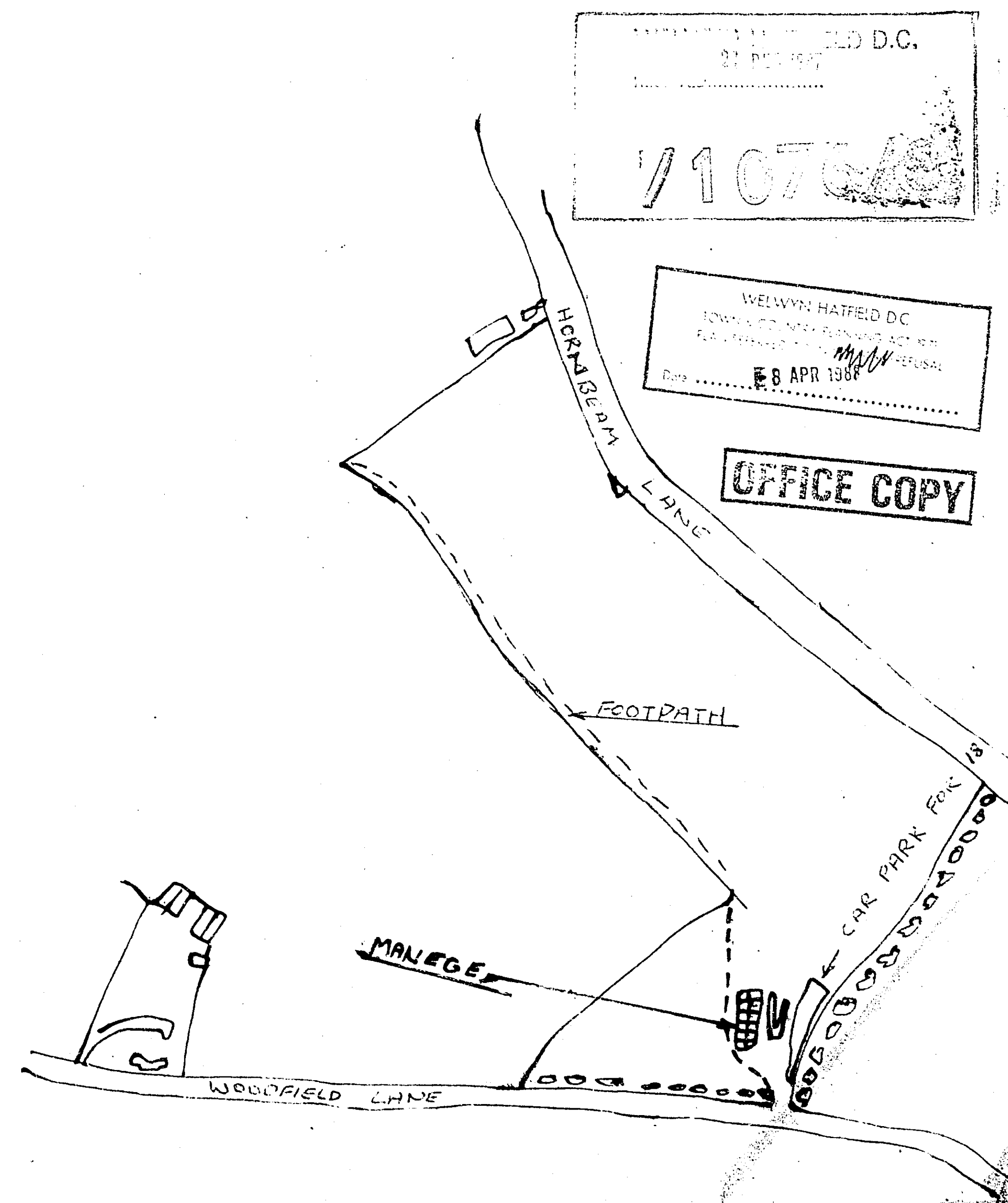
Typical Cross Section

A1 A2 A3 A4 A4 A4 A3 A2 A1



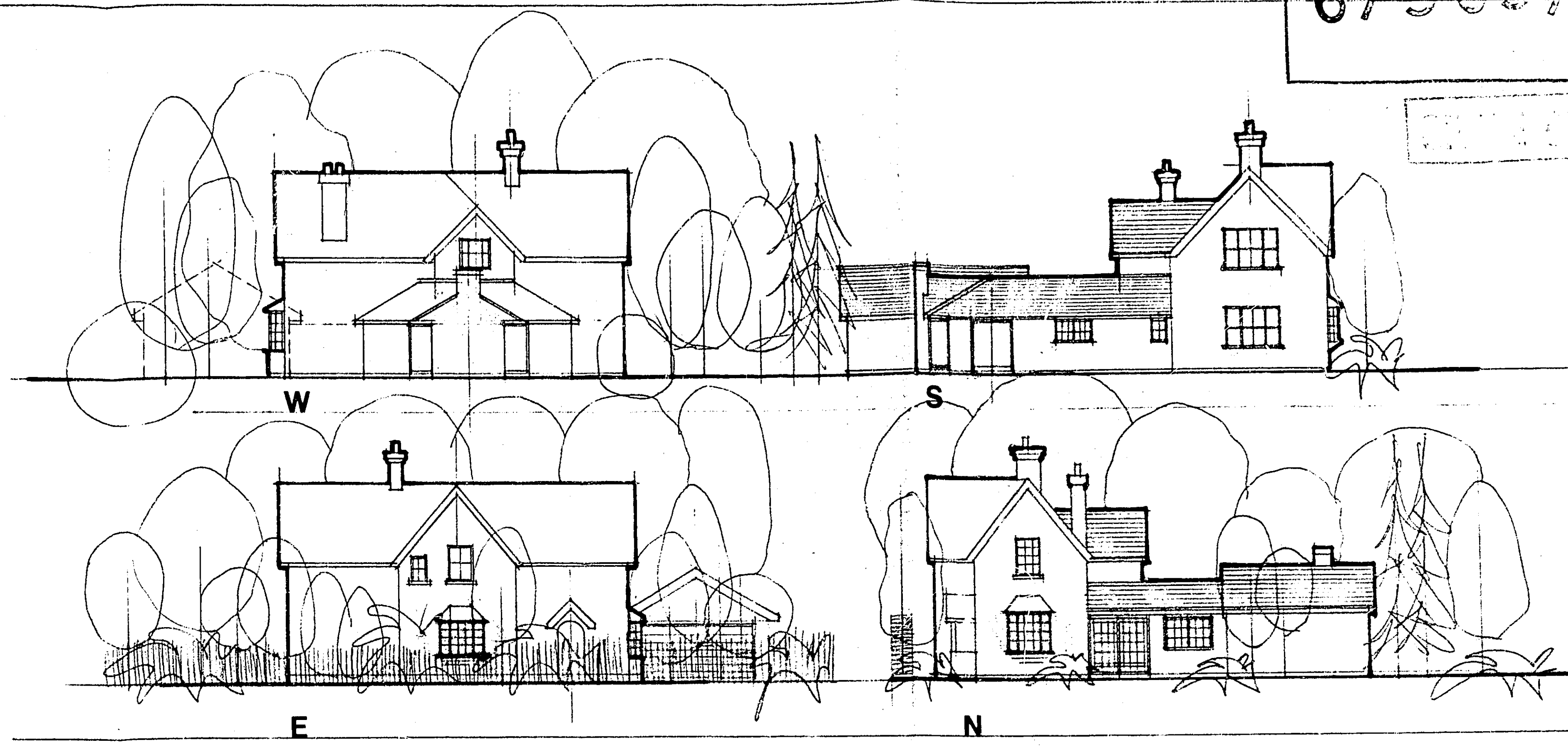
CONTINUATION DRAWING  
 FOR  
 E.D.A. RIDING  
 LIVERY MANEGE  
 AT  
 WOODFIELD LANE  
 FOR  
 M.R. CAMIS  
 ANGLEIGH FARM  
 CUCUMBER LANE  
 ESSENDON

SCALE 1-50



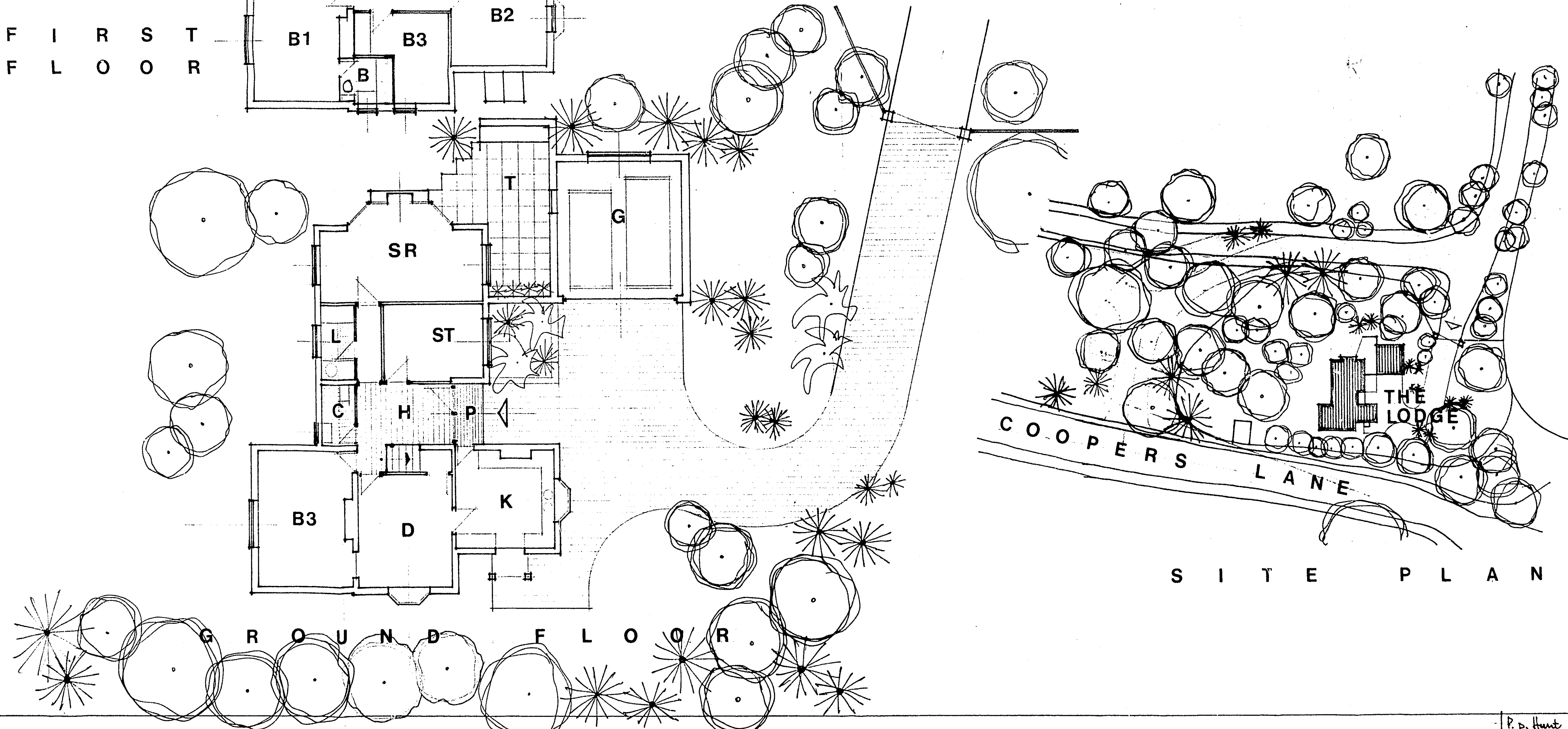
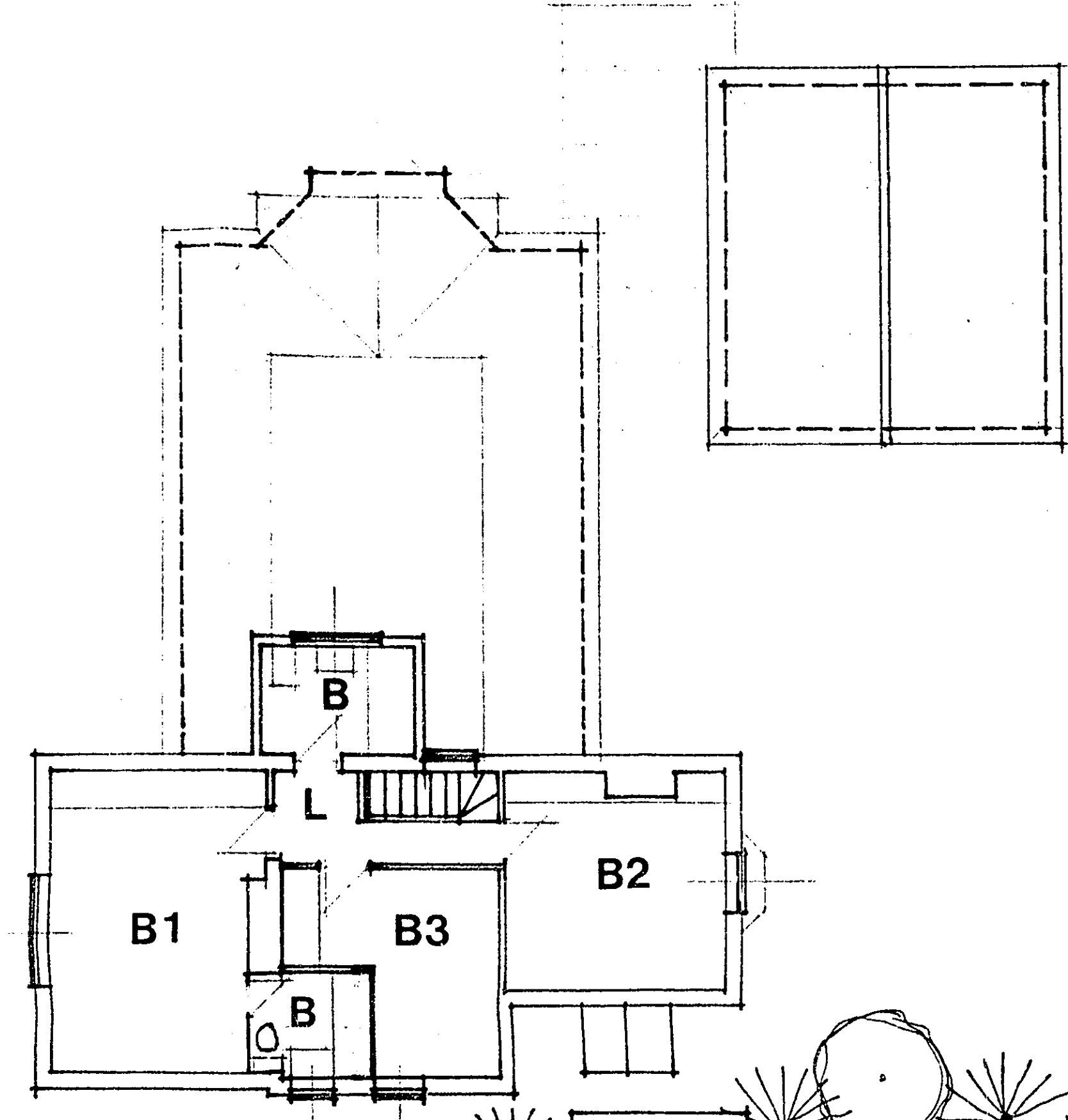
**T H E L O D G E**

WELWYN HATFIELD D.C.  
 6/562/81



**E L E V A T I O N S**

**F I R S T F L O O R**



**S I T E P L A N**

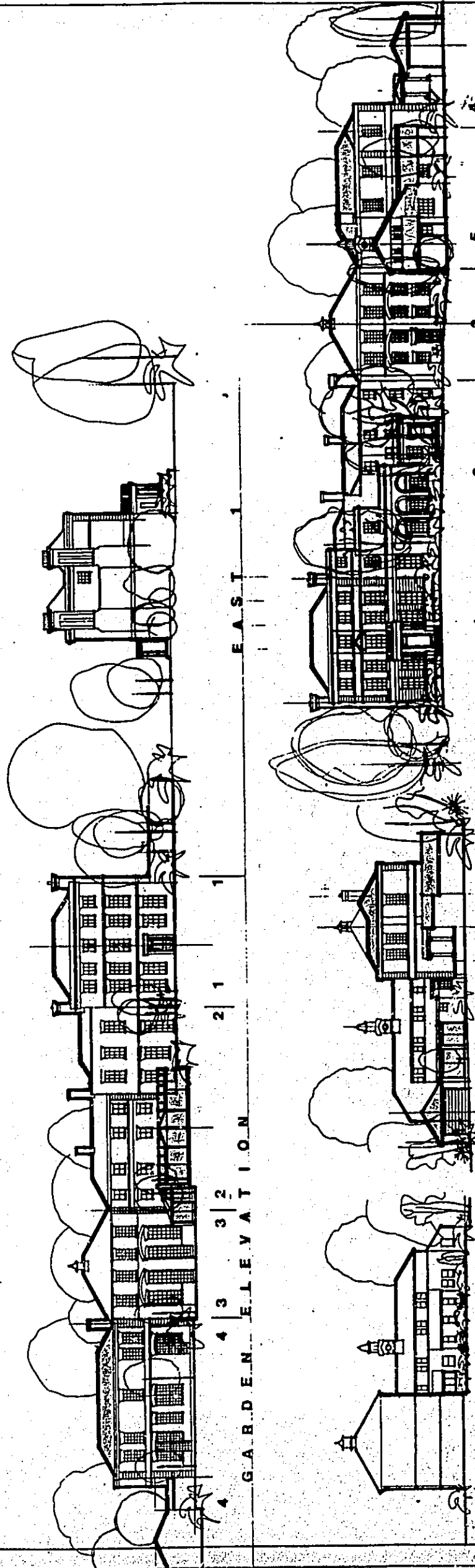
**N O R T H A W P L A C E**

P. D. Hunt & Associates.  
 Wood Close, London, E.7.  
 Date: March, 1965.  
 Scale: 1/100 = 1" = 40'  
**NP19**



OFFICE COPY

WELWYN HATFIELD D.C.  
RECEIVED ..... 2.8 MAY 1985  
6/368/85

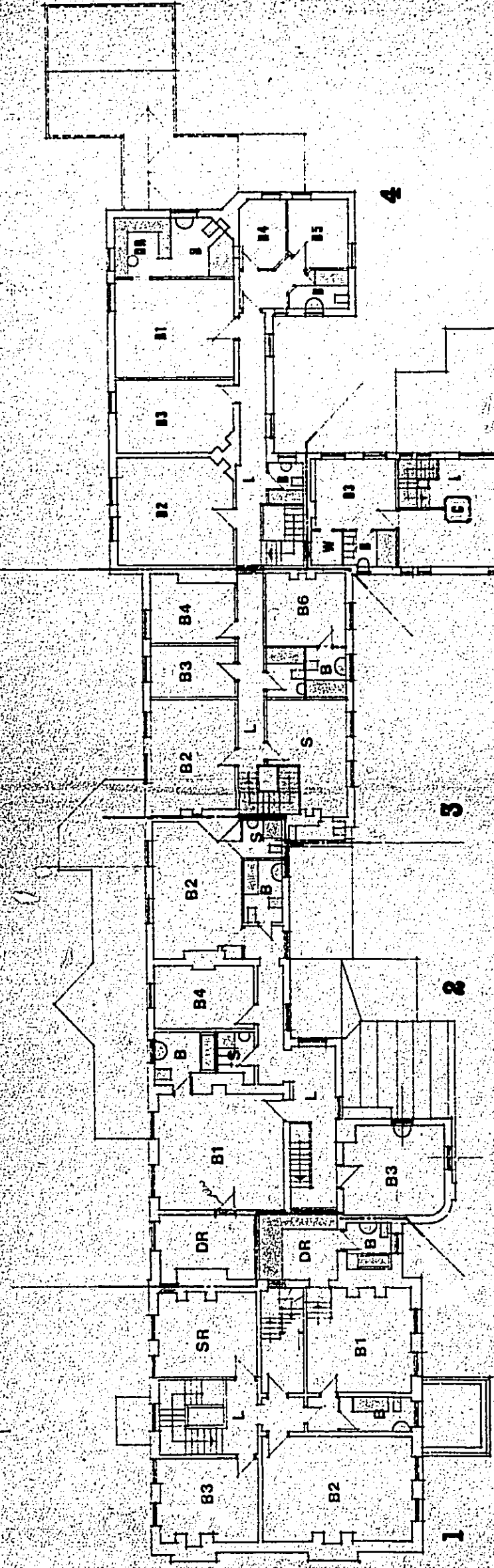


4 GARDEN ELEVATION

EAST

1 NORTH ELEVATION

3 COACH HOUSES



1

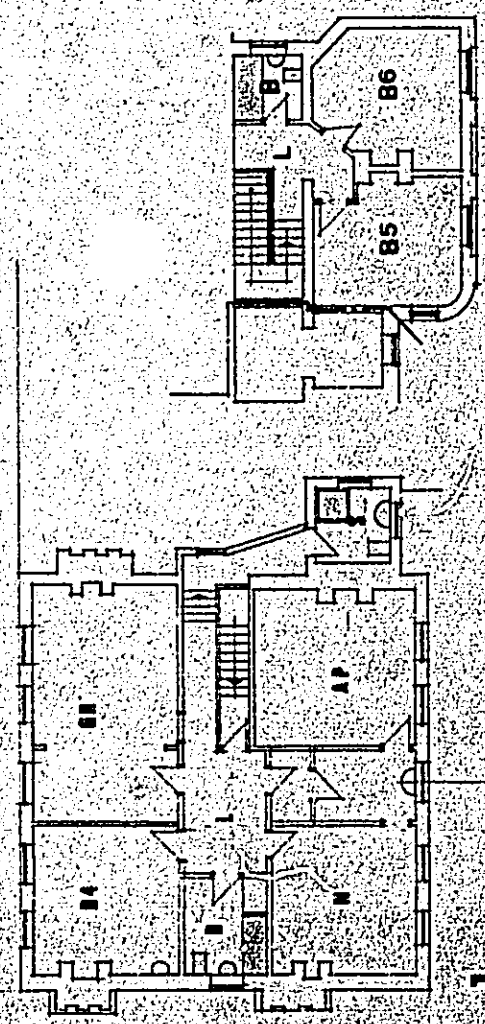
2

3

4

5

F I R S T F L O O R P L A N



1

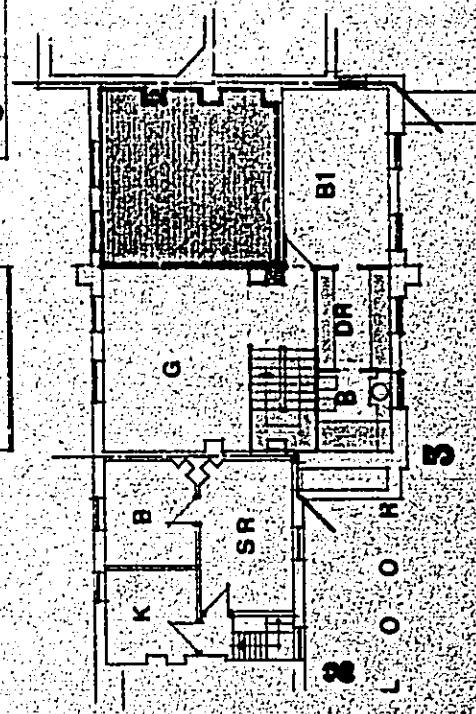
2

3

4

5

T O P F L O O R M E Z Z A N I N E F L O O R



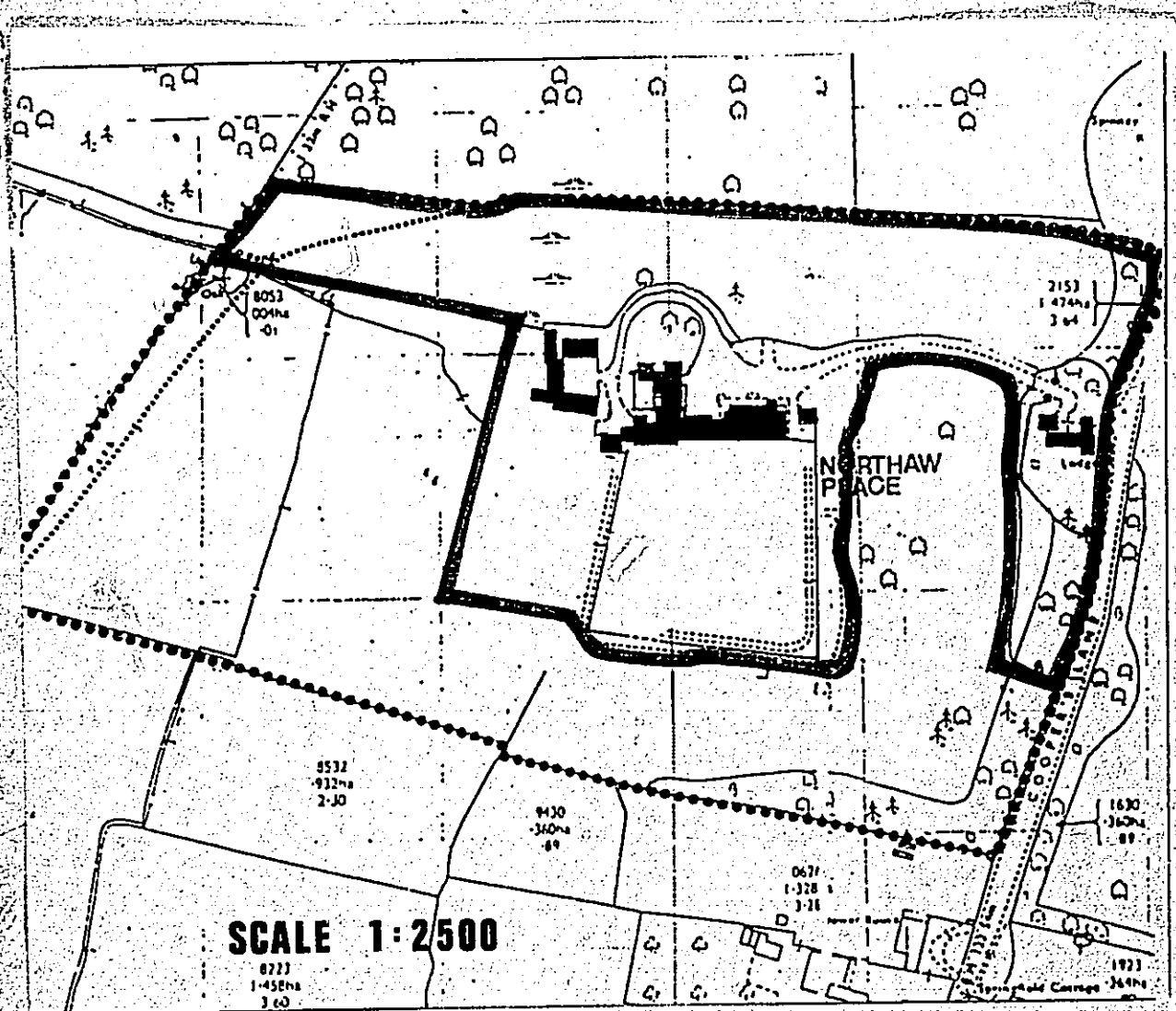
1

2

3

4

5



**SCALE 1:2500**

8727  
1-458m  
3 60

1923  
364m

H E L O D G E

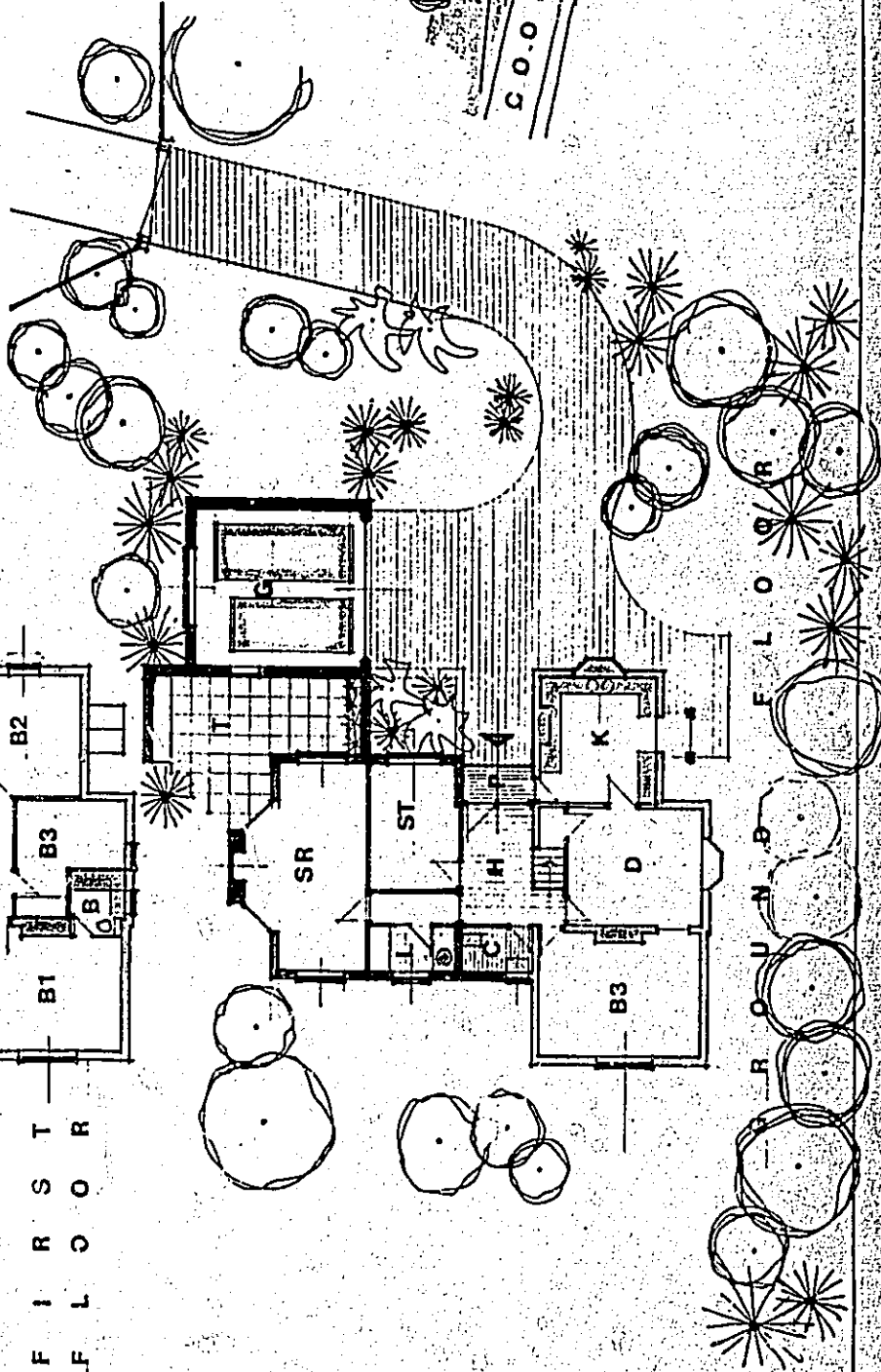
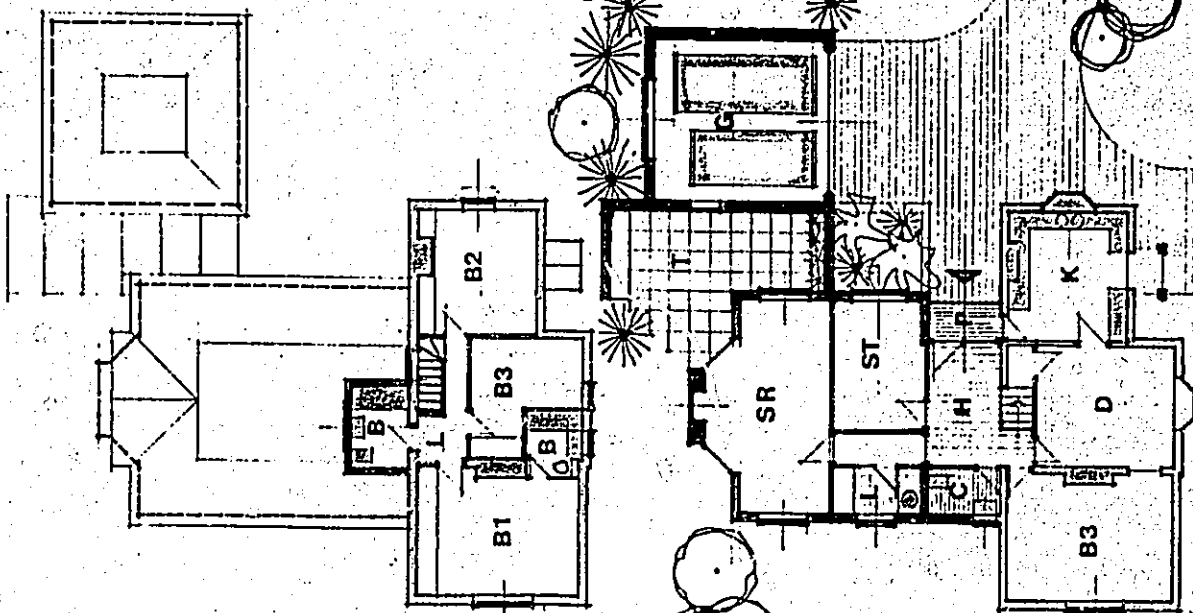
OFFICE COPY

WELWYN HATFIELD D.C.

RECEIVED...28 MAY 1985

6/368/85

F I R S T  
\_F L O O R



R O O M N O T F L O O R

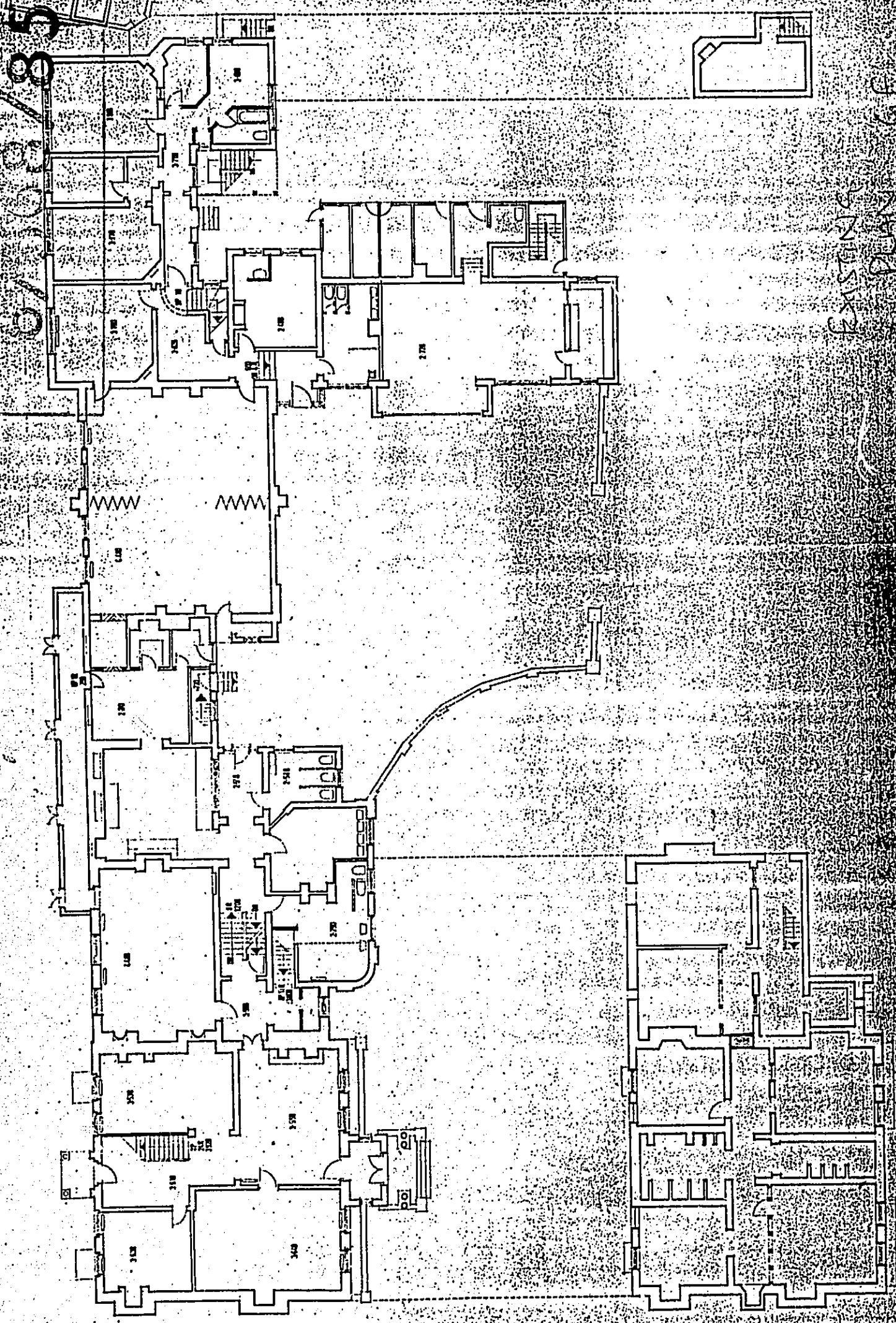
O R T H A W P L A N C E

Date: March, 1985  
P. No. 01  
Scale: 1/8" = 1'-0"



WEEHAWAN FIELD D.C.

RECEIVED ..... 28 MAY 1953



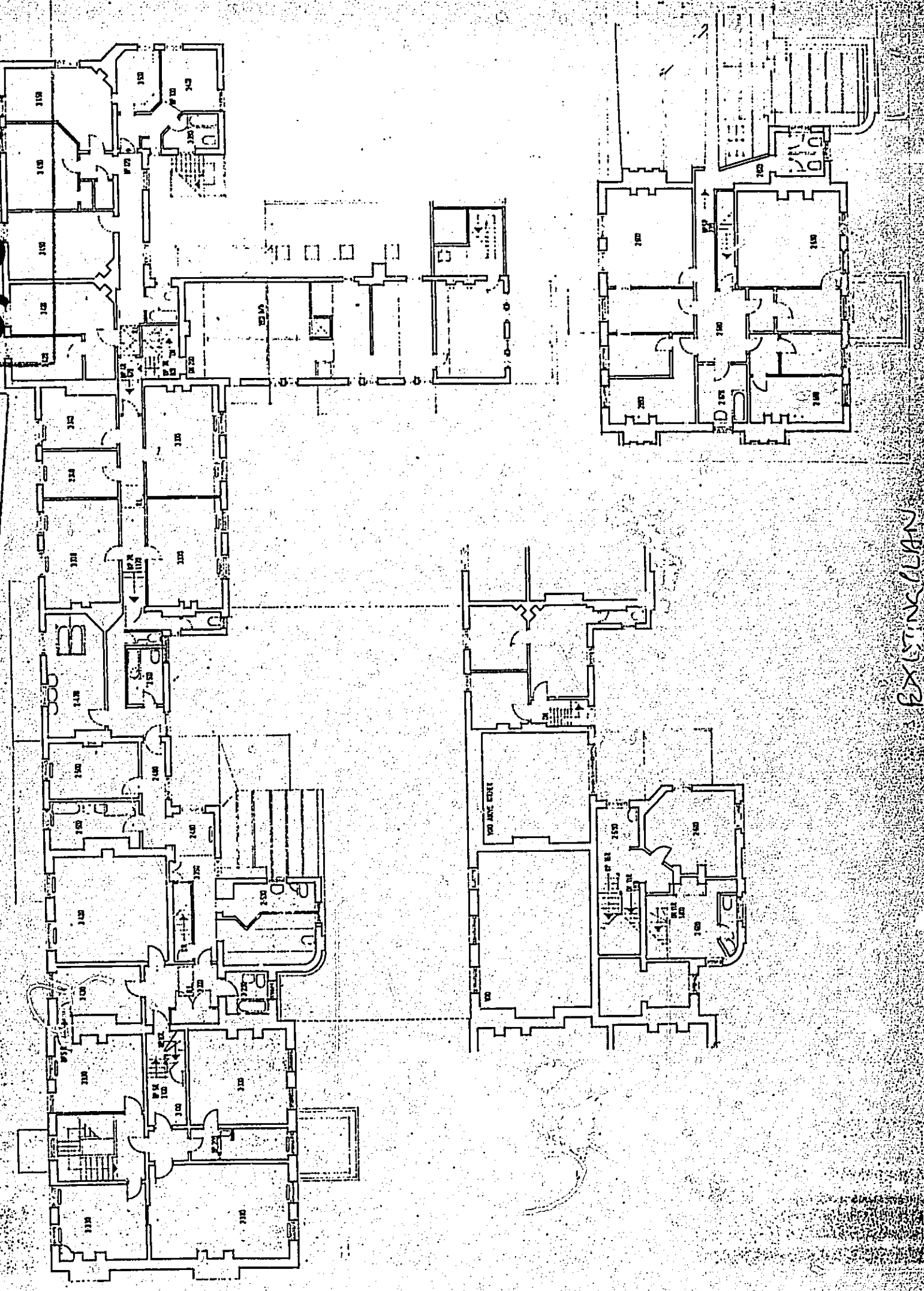
RECEIVED  
MAY 28 1953

WELWYN HATFIELD D.C.

RECEIVED 28 MAY 1968

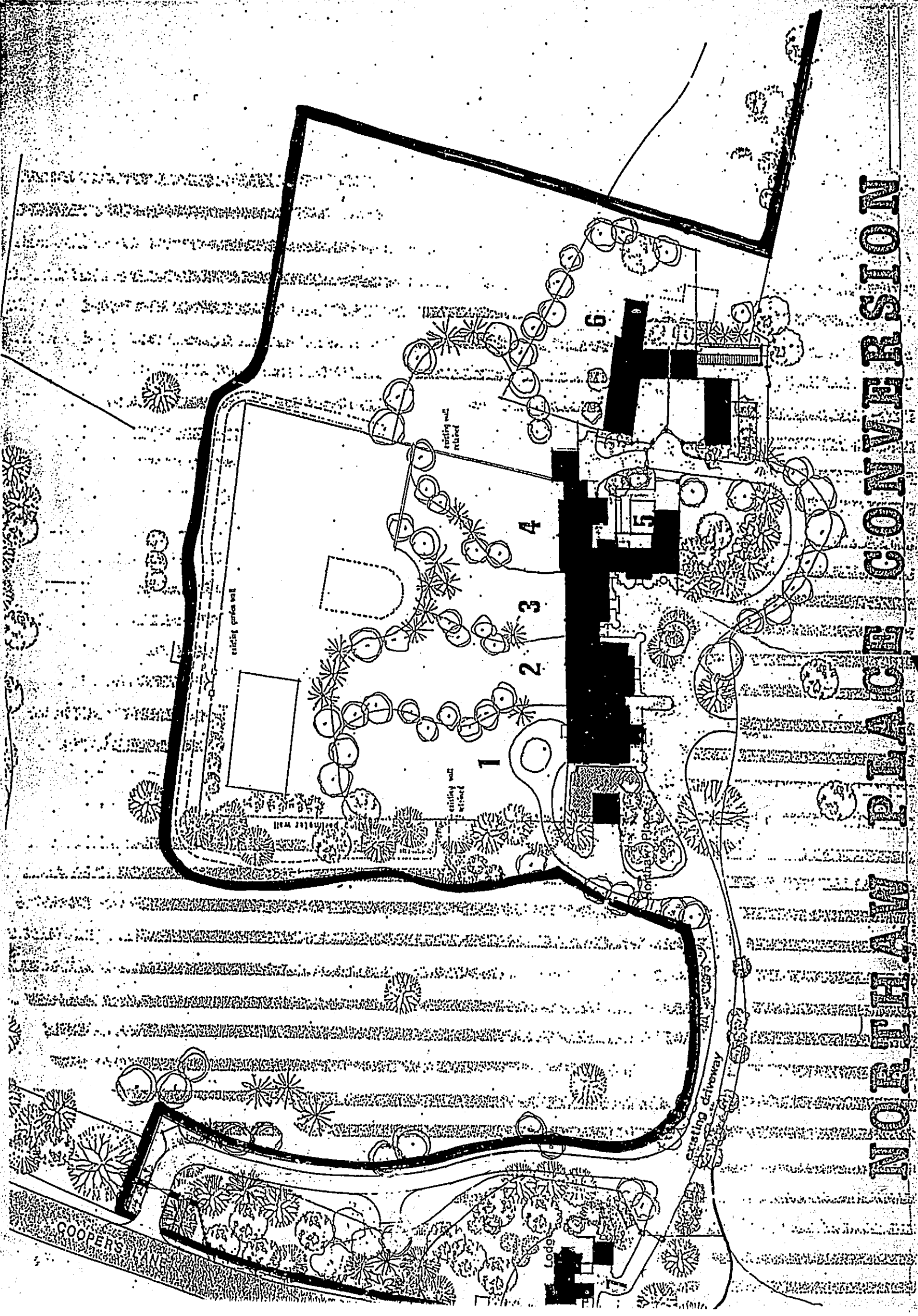
6/368/85

OFFICE COPY



EXISTING PLAN

# PLAN AND CONVERSION







6/20/82

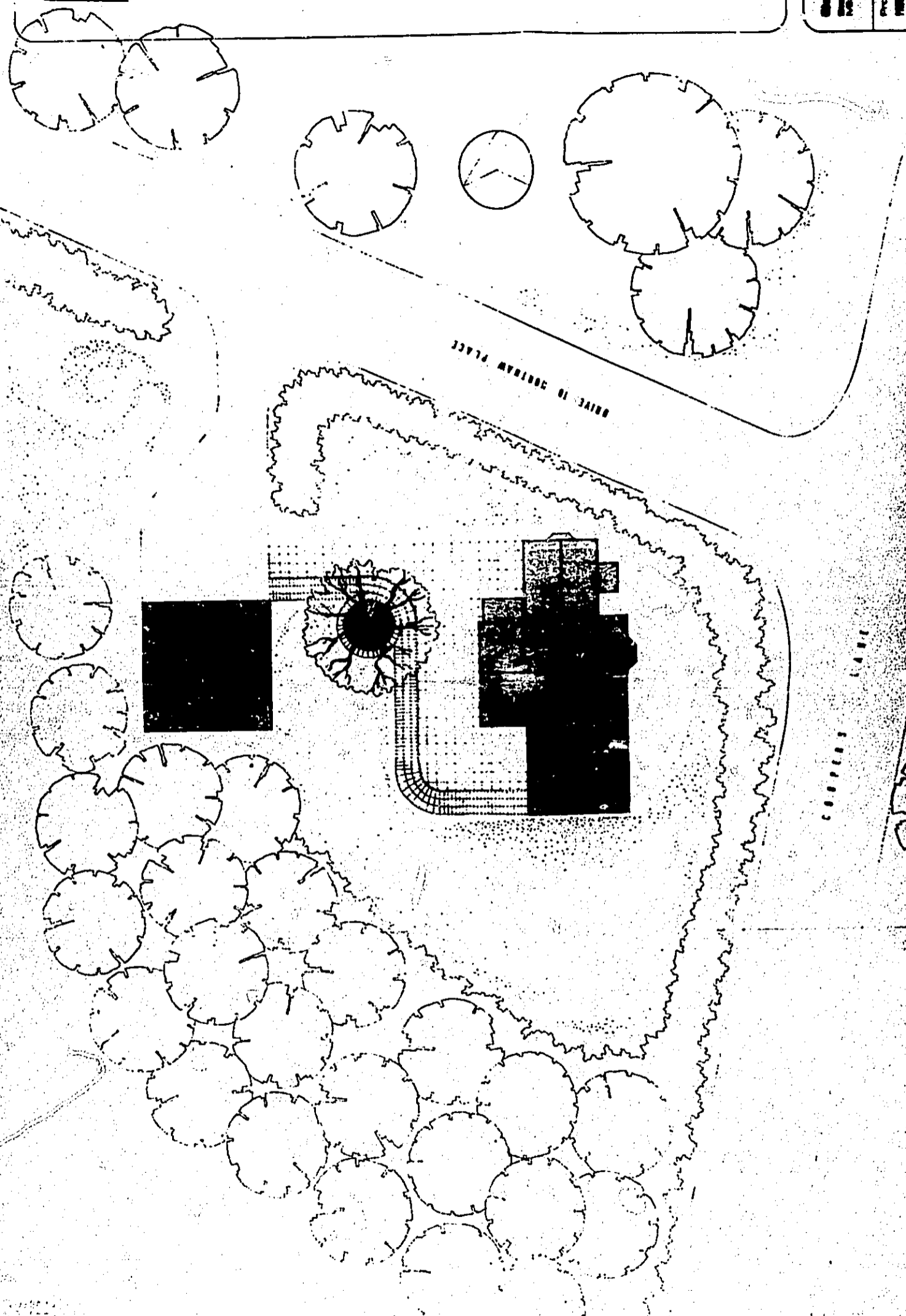
DATE

SCALE: 1/8" = 1'-0"

Jeffrey Charles  
Landscape Architect  
1800 Kuyper Place  
Berkeley, CA 94709

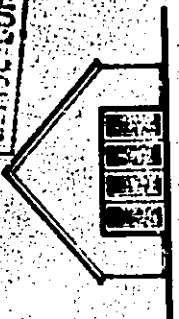
Project: [REDACTED]  
Prepared: [REDACTED]  
Title: SITE PLAN

Scale: [REDACTED]  
Date: [REDACTED]



WILSON BROTHERS, INC.  
 12345 WILSON BLVD.  
 WASHINGTON, D.C. 20004  
 36/20/82

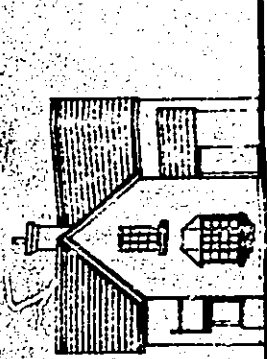
OFFICE COPY



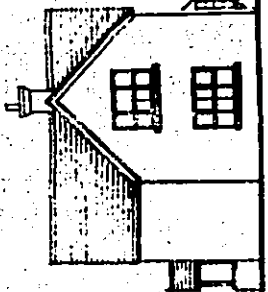
GARAGE NORTH



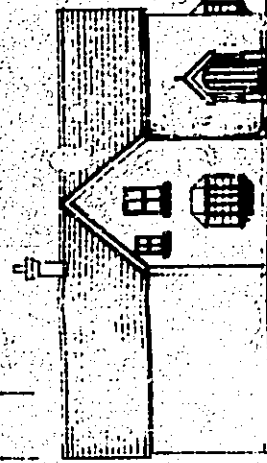
GARAGE EAST



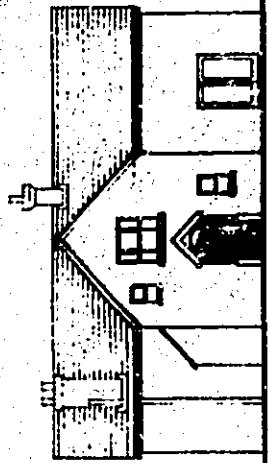
NORTH



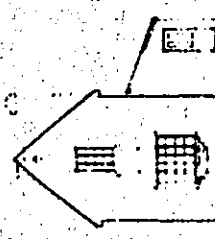
SOUTH



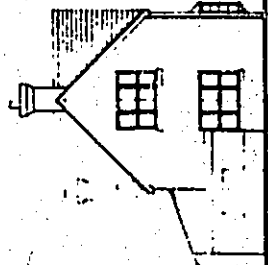
EAST



WEST

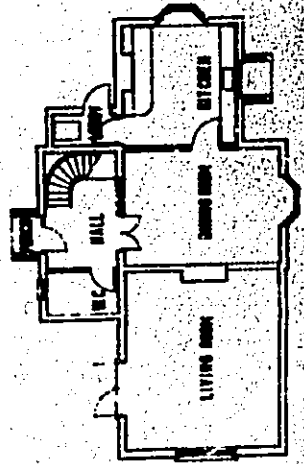
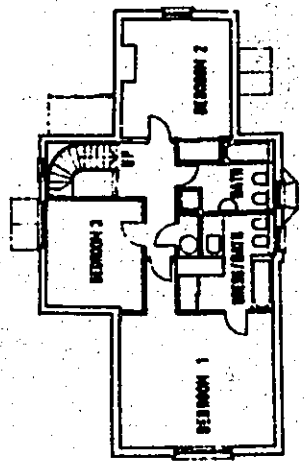


NORTH

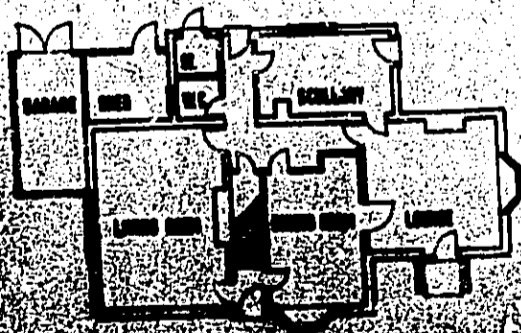
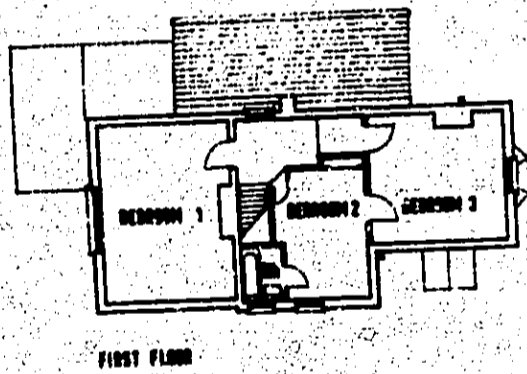


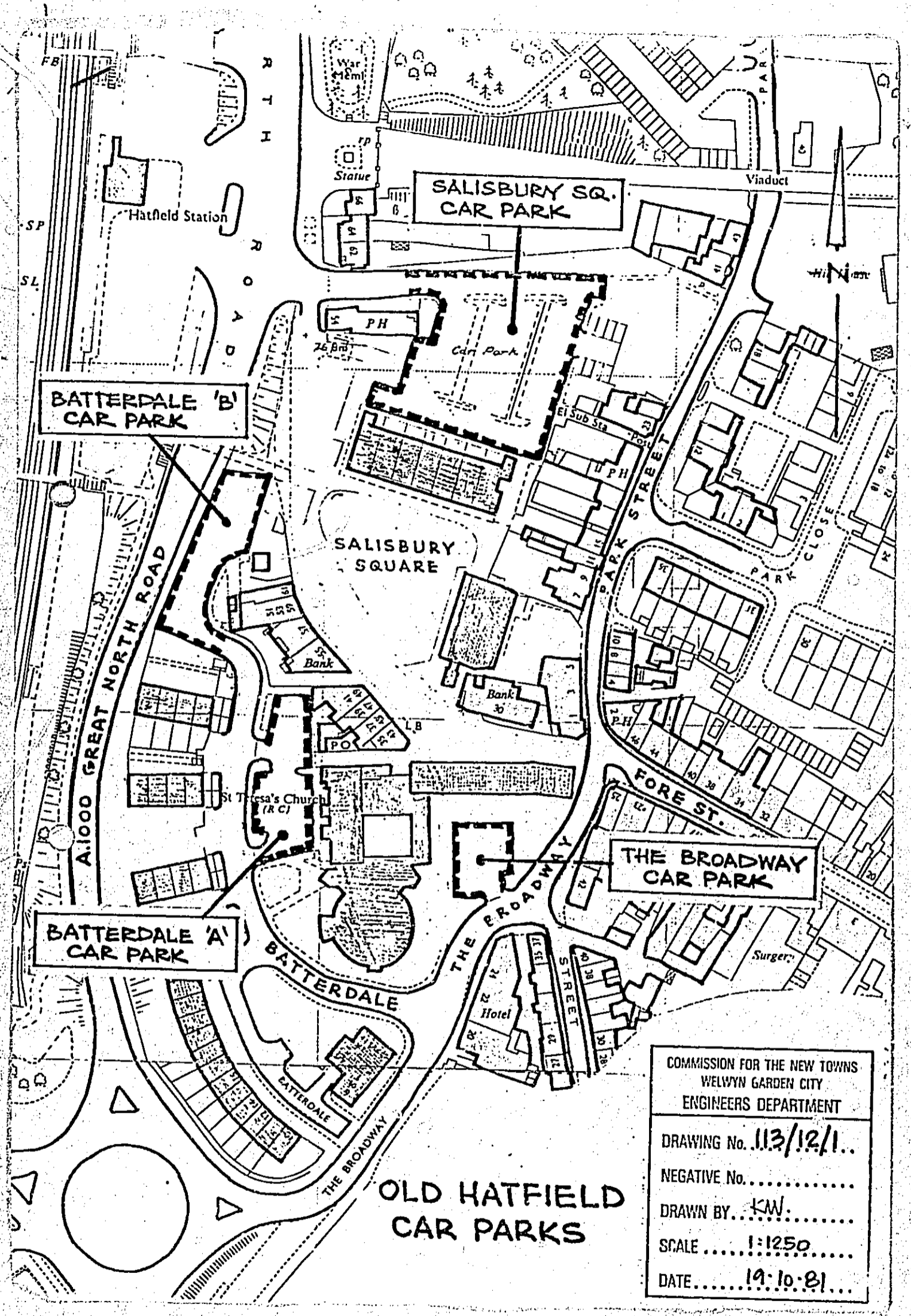
SOUTH

**EXPLANATION SHEET 1:**  
 1. STAIRS: Indicated by a solid line with arrows pointing up or down.  
 2. WALLS: Indicated by a solid line.  
 3. DOORS: Indicated by a solid line with an arc showing the swing.  
 4. WINDOWS: Indicated by a solid line with a break symbol.  
 5. CLOSET: Indicated by a solid line with a break symbol.  
 6. BATH: Indicated by a solid line with a break symbol.  
 7. KITCHEN: Indicated by a solid line with a break symbol.  
 8. LIVING ROOM: Indicated by a solid line with a break symbol.  
 9. BEDROOM: Indicated by a solid line with a break symbol.  
 10. HALL: Indicated by a solid line with a break symbol.  
 11. ENTRY: Indicated by a solid line with a break symbol.  
 12. PORCH: Indicated by a solid line with a break symbol.  
 13. TERRACE: Indicated by a solid line with a break symbol.  
 14. DRIVEWAY: Indicated by a solid line with a break symbol.  
 15. GARAGE: Indicated by a solid line with a break symbol.  
 16. PATIO: Indicated by a solid line with a break symbol.  
 17. DECK: Indicated by a solid line with a break symbol.  
 18. STAIRS (UP): Indicated by a solid line with an arrow pointing up.  
 19. STAIRS (DOWN): Indicated by a solid line with an arrow pointing down.  
 20. WALL (THICK): Indicated by a solid line with a break symbol and a thick line.  
 21. WALL (THIN): Indicated by a solid line with a break symbol and a thin line.  
 22. DOOR (SWING): Indicated by a solid line with an arc showing the swing.  
 23. WINDOW (DOUBLE): Indicated by a solid line with a break symbol and two panes.  
 24. WINDOW (SINGLE): Indicated by a solid line with a break symbol and one pane.  
 25. CLOSET (CLO): Indicated by a solid line with a break symbol and the letters CLO.  
 26. BATH (BATH): Indicated by a solid line with a break symbol and the word BATH.  
 27. KITCHEN (KITCHEN): Indicated by a solid line with a break symbol and the word KITCHEN.  
 28. LIVING ROOM (LIVING ROOM): Indicated by a solid line with a break symbol and the words LIVING ROOM.  
 29. BEDROOM (BEDROOM): Indicated by a solid line with a break symbol and the word BEDROOM.  
 30. HALL (HALL): Indicated by a solid line with a break symbol and the word HALL.  
 31. ENTRY (ENTRY): Indicated by a solid line with a break symbol and the word ENTRY.  
 32. PORCH (PORCH): Indicated by a solid line with a break symbol and the word PORCH.  
 33. TERRACE (TERRACE): Indicated by a solid line with a break symbol and the word TERRACE.  
 34. DRIVEWAY (DRIVEWAY): Indicated by a solid line with a break symbol and the word DRIVEWAY.  
 35. GARAGE (GARAGE): Indicated by a solid line with a break symbol and the word GARAGE.  
 36. PATIO (PATIO): Indicated by a solid line with a break symbol and the word PATIO.  
 37. DECK (DECK): Indicated by a solid line with a break symbol and the word DECK.



EXISTING





**OLD HATFIELD  
CAR PARKS**

COMMISSION FOR THE NEW TOWNS  
WELWYN GARDEN CITY  
ENGINEERS DEPARTMENT

DRAWING No. 113/12/11..

NEGATIVE No. ....

DRAWN BY... K.W. ....

SCALE ..... 1:1250 .....

DATE..... 19.10.81.....