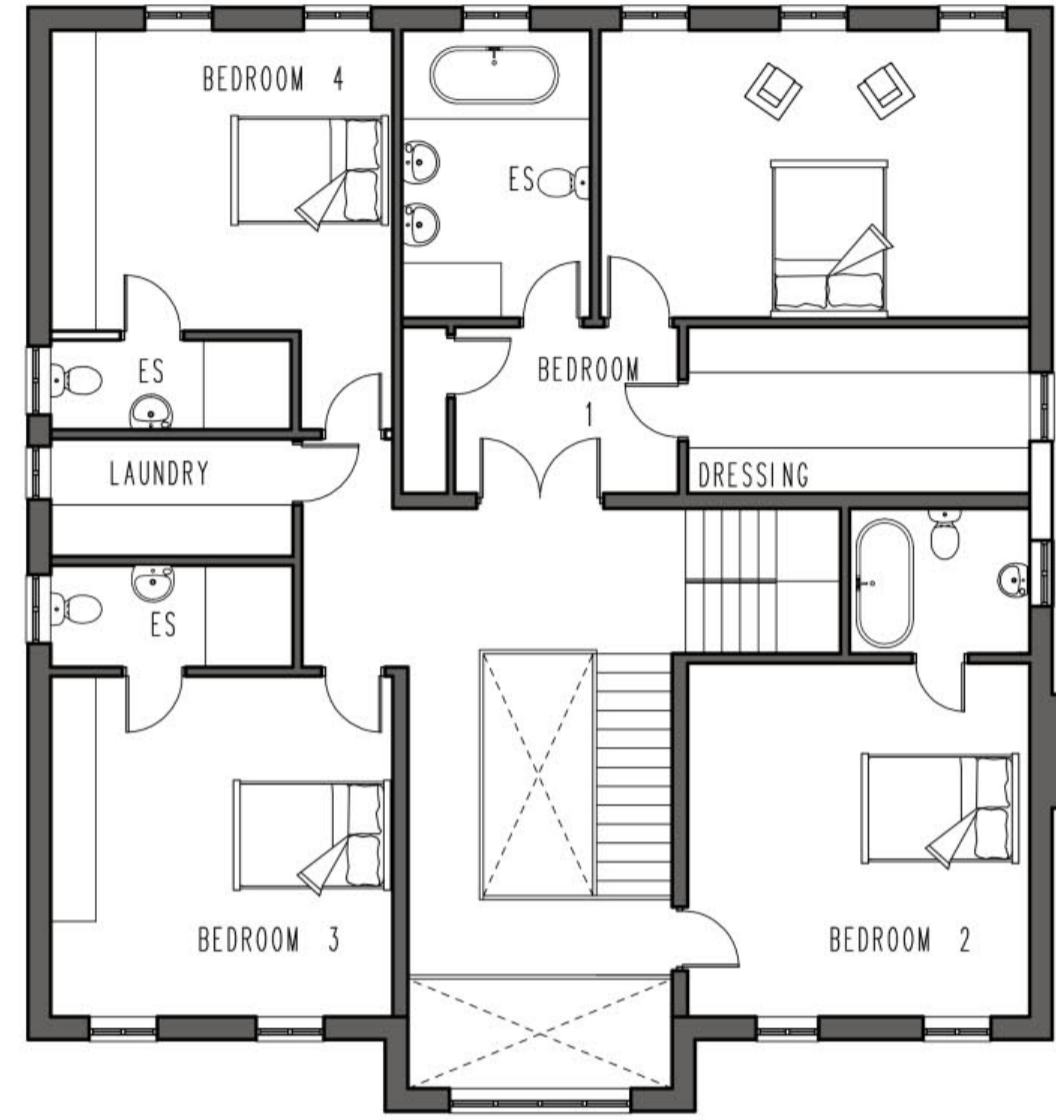
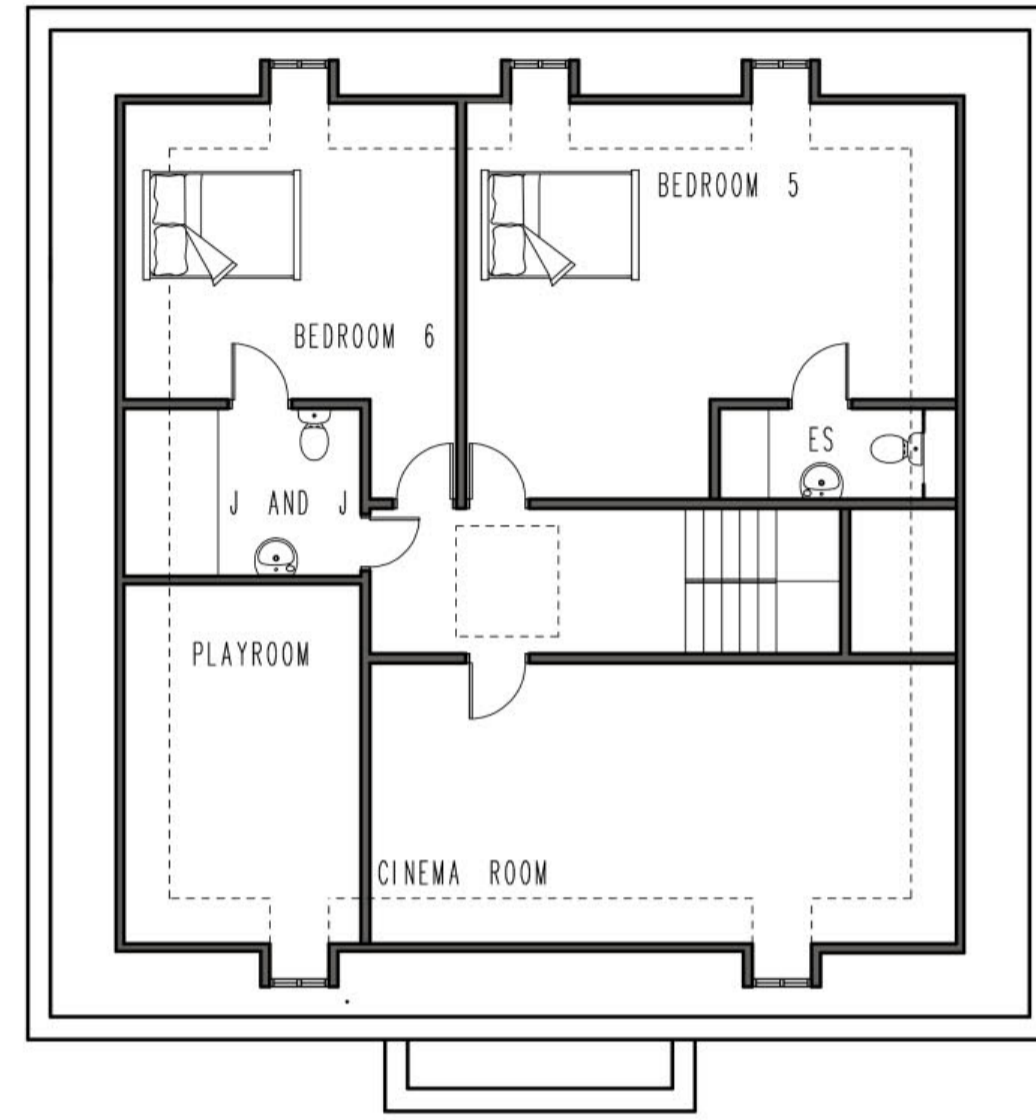


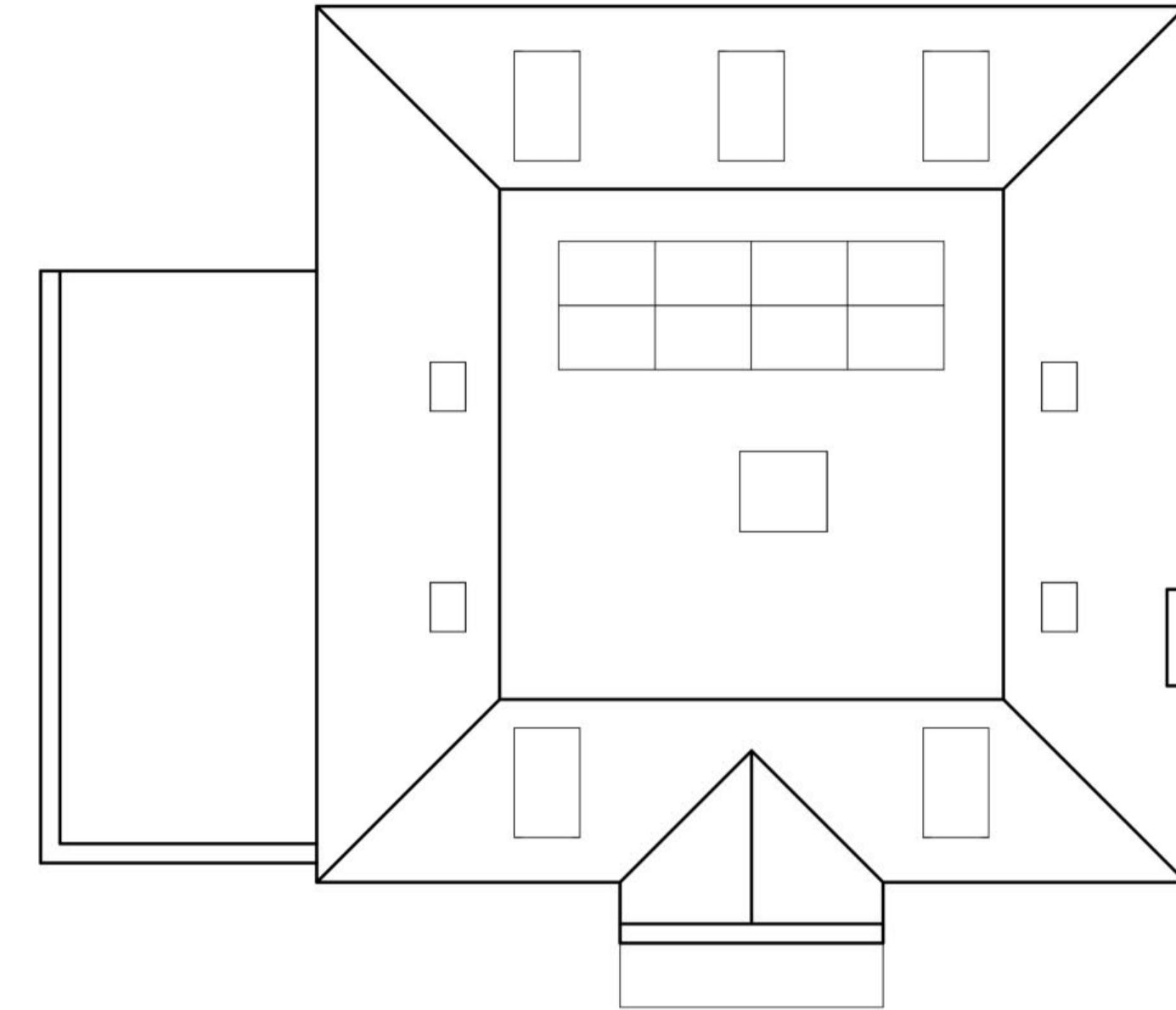
GROUND FLOOR PLAN 210M2



FIRST FLOOR PLAN 164M2
(EXC VOIDS)

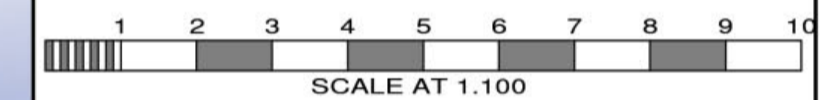


SECOND FLOOR PLAN 102M2
@ 1.5M HIGH



ROOF PLAN

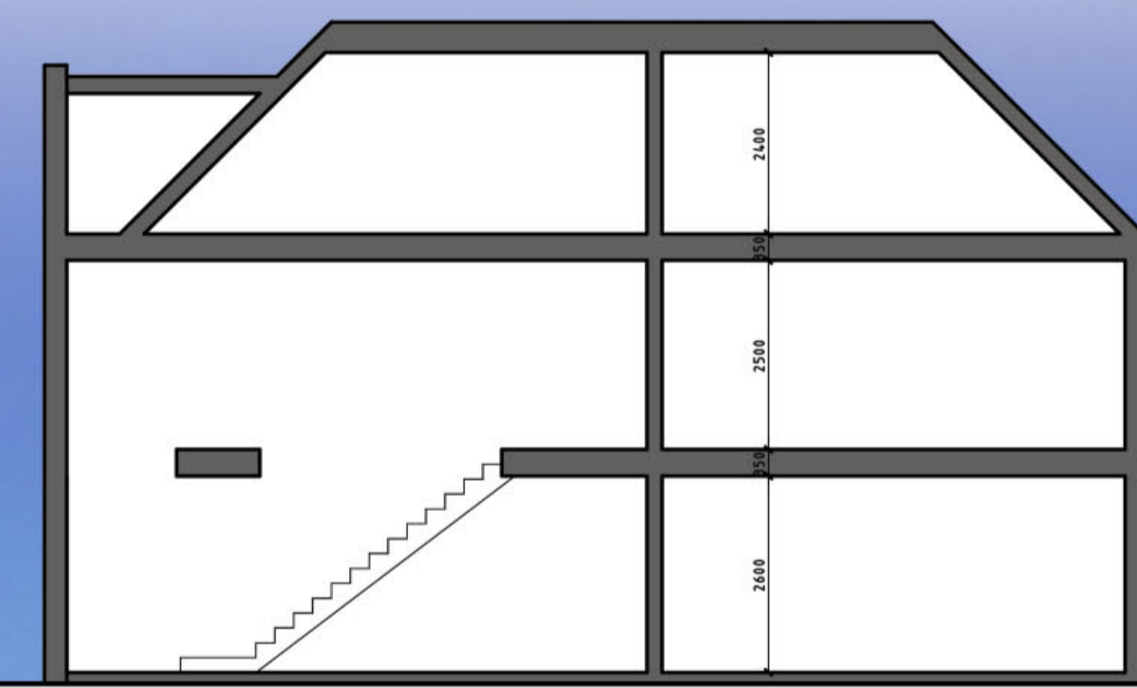
GIFA- 476M2



FRONT ELEVATION



REAR ELEVATION



SECTION

No.	Date	By	Contents
Revisions			

Site Address
 101 BROOKMANS AVE
 BROOKMANS PARK
 AL9 7QG

Job Title
 DEMOLITION OF EXG
 HOUSE AND
 ERECTION OF 5 HOUSES

Drawing Title
 PROPOSED HOUSE 1

Scale 1:100 @ a1 Date 01/19 Drawn by AJC

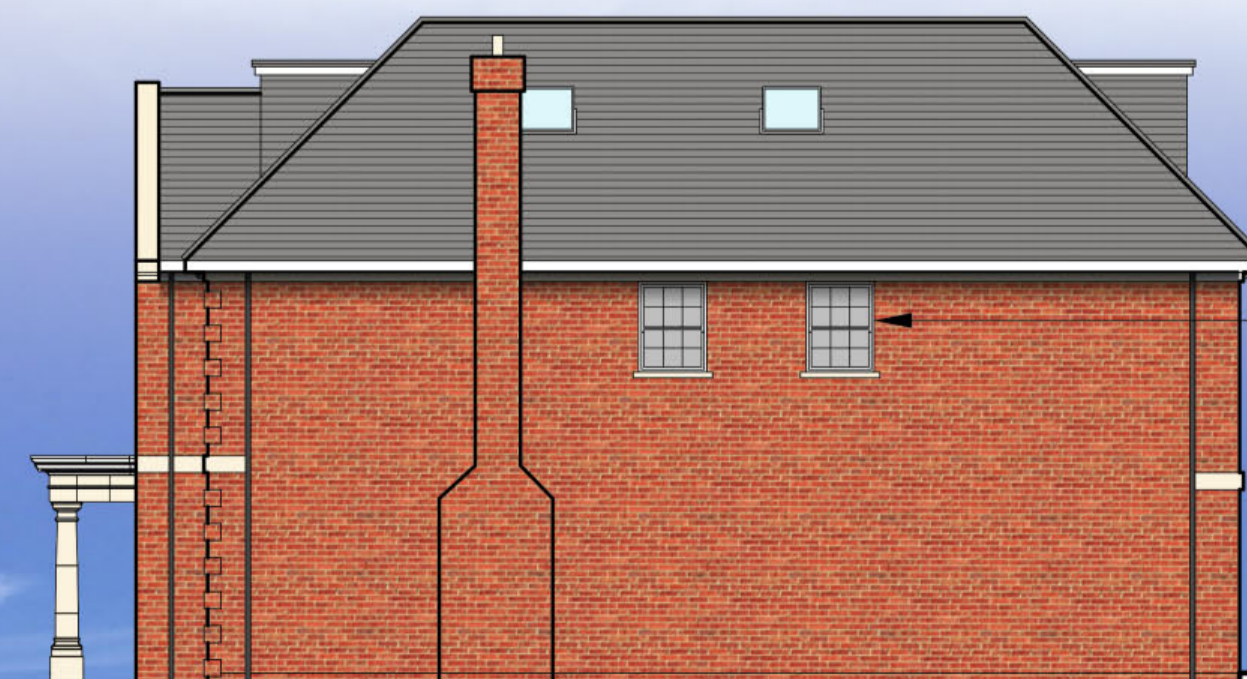
Alan Cox
 associates
 Architectural & Planning Consultants
 TEL: 020 - 8440 - 7777
 FAX: 020 - 8364 - 9556

Dwg. No. 485018-5 Rev.



SIDE ELEVATION

SIDE WINDOWS TO BE
 OBSCURED AND
 OPENABLE BY 100MM
 MAX



SIDE ELEVATION

SIDE WINDOWS TO BE
 OBSCURED AND
 OPENABLE BY 100MM
 MAX