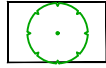



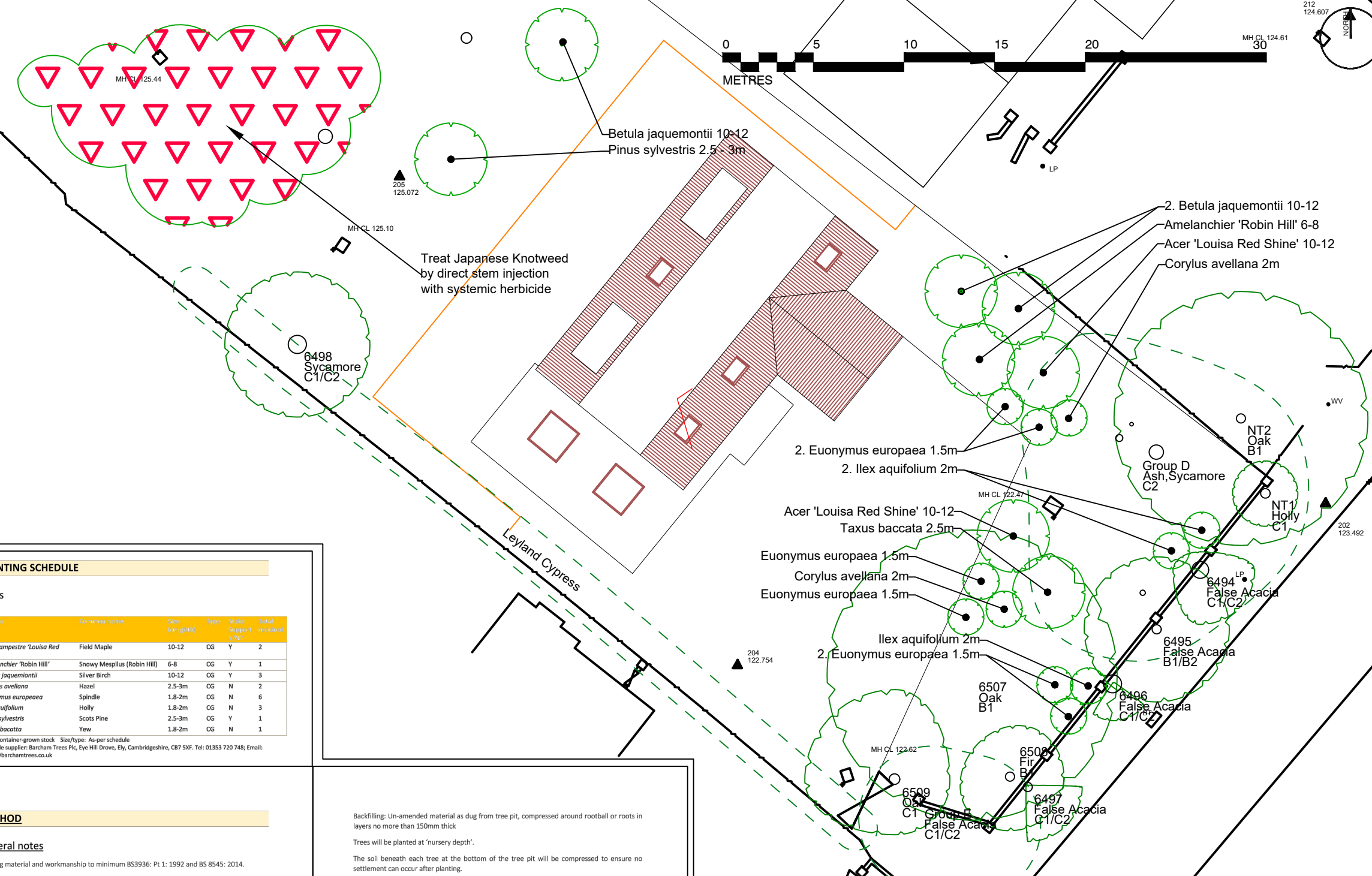
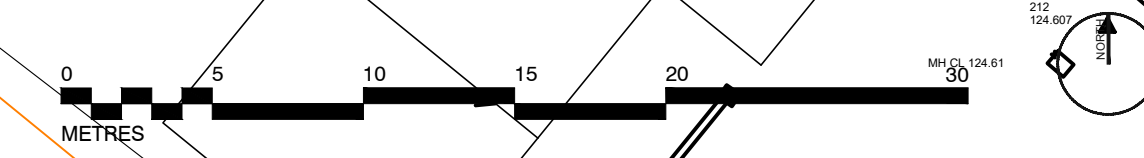


This drawing is the property of Andrew Belson Arbicultural Consultant. Copyright is reserved by him and the drawing is issued on the condition that it is not copied, reproduced, retained nor disclosed to any unauthorized person either wholly or in part without the consent of Andrew Belson.

NOTES: Based on drawing TDC043/PL/001
The original of this drawing was produced in colour – a monochrome copy should not be relied upon

KEY

-  PROPOSED TREE OR LARGE SHRUB
-  CANOPY OUTLINE - EXISTING TREE
-  CANOPY OUTLINE - EXISTING GROUPS
-  AREA CONTAINING JAPANESE KNOTWEED



PLANTING SCHEDULE

Trees

| Species | Common name | Size (cm girth) | Type | Stake Support Y/N/T | Total required |
|--|-----------------------------|-----------------|------|---------------------|----------------|
| <i>Acer campestre</i> 'Louisa Red Shine' | Field Maple | 10-12 | CG | Y | 2 |
| <i>Amelanchier</i> 'Robin Hill' | Snowy Mesplius (Robin Hill) | 6-8 | CG | Y | 1 |
| <i>Betula jaquemontii</i> | Silver Birch | 10-12 | CG | Y | 3 |
| <i>Corylus avellana</i> | Hazel | 2.5-3m | CG | N | 2 |
| <i>Euonymus europaea</i> | Spindle | 1.8-2m | CG | N | 6 |
| <i>Ilex aquifolium</i> | Holly | 1.8-2m | CG | N | 3 |
| <i>Pinus sylvestris</i> | Scots Pine | 2.5-3m | CG | Y | 1 |
| <i>Taxus baccata</i> | Yew | 1.8-2m | CG | N | 1 |

CG = Container-grown stock Size/type: As-per schedule
Possible supplier: Barcham Trees Plc, Eye Hill Drive, Ely, Cambridgeshire, CB7 5XF. Tel: 01353 720 748; Email: sales@barchamtrees.co.uk

METHOD

General notes

Planting material and workmanship to minimum BS3936: Pt 1: 1992 and BS 8545: 2014.

Ground Preparation

Any areas for planting that lie within the root protection areas of retained trees will not be stripped or excavated so far as is practical in accordance with the Approved engineering drawings for the development

Where required, the sub-soil will be graded and any detritus removed

Areas for planting will receive a minimum of 300mm of topsoil.

Areas for turfing will receive a minimum of 150mm of topsoil

Topsoil will be as-dug from site or imported to BS3882: 2015

Topsoil will be laid and lightly consolidated in layers 150mm thick to the required finished level

Japanese Knotweed

The Japanese Knotweed to the northwest of the site will be marked with red and white barrier tape, erected on stakes set out to enclose the entire area.

The marked area will not be accessed by anyone other than those contracted to apply herbicide.

A suitable qualified specialist contractor will be engaged to apply herbicide at the appropriate growth stage of the weed.

The proposed method of application is direct stem injection.

Herbicide application will continue until there is no more growth.

No plant material will be moved off site.

Setting-out

As-per the landscape proposal drawing but adjusted on site to take account of the actual situation presented at the end of the main development phase.

Planting

Tree pits will be dug to the depth of the container or root spread plus 150mm in each dimension.

Backfilling: Un-amended material as dug from tree pit, compressed around rootball or roots in layers no more than 150mm thick

Trees will be planted at 'nursery depth'.

The soil beneath each tree at the bottom of the tree pit will be compressed to ensure no settlement can occur after planting.

Fertiliser

60g of Slow release compound fertiliser such as ICL 'Enmag' will be incorporated into the backfill material.

Irrigation

Each tree will have a watering tube such as 'Root Rain Urban' installed in accordance with the supplier's instructions as back-filling progresses.

Tree support

Trees with a single clear stem will be supported with stakes and a crosspiece.

Multi stemmed plants will not require staking.

Stakes will be softwood, free from projections and large or edge knots and with pointed lower end.

Two stakes will be driven vertically into bottom of the tree pit on either side of tree position before planting.

Soil will be consolidated around the stakes during backfilling.

Stakes will be cut off to 150mm above ground level and a timber crosspiece ex 100mm x 25mm sawn timber will be fixed to the top of the stakes using galvanized clout nails.

The trees will be secured to the cross piece using 'Toms Big block' and rubber tree belt. Backfilling: Un-amended material as dug from tree pit or shrub hole, compressed around roots in layers no more than 150mm thick

Season

All plant material is available container-grown therefore planting can be completed as soon as the ground becomes available.

Planting will not be carried out during frosty weather or when the ground is waterlogged.

MAINTENANCE

Trees will be maintained for a period of five years in accordance with the following table:

| Year/Operation | 1 | 2 | 3 | 4 | 5 |
|----------------|--------------------------------------|--------------------------------------|------------------------------------|------------------------------------|------------------------------------|
| Watering | Every three weeks from May to August | Every three weeks from May to August | Only if drought conditions persist | Only if drought conditions persist | Only if drought conditions persist |
| Weeding | Every three weeks from May to August | Every three weeks from May to August | Three visits | Three visits | Three visits |
| Pruning | None | Formative, if required | None | None | Formative, if required |
| Check | September | September | September | September | September |

Definitions

Watering means bringing the ground to field capacity. Do not water if waterlogging or anaerobic conditions are suspected.

Weeding means the removal of all competing plants to a radius of 1m from the centre of the tree or plant.

Pruning will be to the minimum standard of BS3998: 2010 'TreeWork' and all arisings will be removed from site and recycled or sent to an approved tip.

Check will include the security of support, the presence of pests or disease, crown dieback, vandalism, accidental damage or death. Any findings will be noted and appropriate action taken following advice from a horticultural professional.

Replacement

Trees that fall within 5 years of planting will be replaced and maintained in accordance with the original specification.

| Rev | Description | Date |
|-----|-------------|------|
| | | |

Purpose of Issue
Planning



Andrew Belson
Arbicultural Consultant
The Tree House, 1a First End
Station Road, Uppingham
Oakham LE15 9EU
t: 01572 823637
e: info@belsontreesurvey.co.uk

Client
Mr M Vignali

Project
Land at 45 Kentish Lane, Brookmans Park

Drawing Title
Soft Landscape Plan

| Drawn | Checked | Reviewed | Date |
|-------|---------|----------|------------|
| AMB | -- | -- | 17/04/2020 |

| Job No. | Scale | Sheet Size | Revision |
|---------|-------|------------|----------|
| 4024 | 1:250 | A3 | |

Drawing Number
4024.Brookmans.TD.LSP