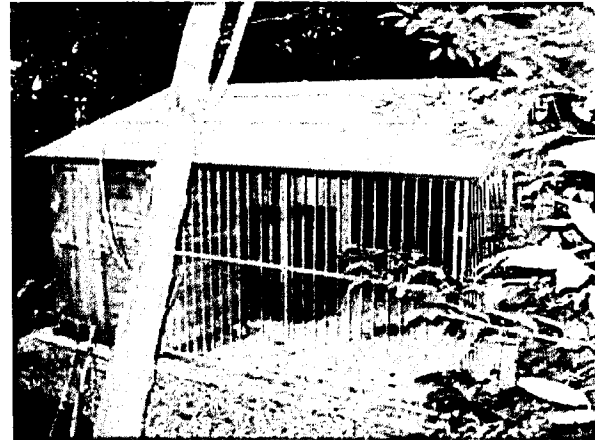


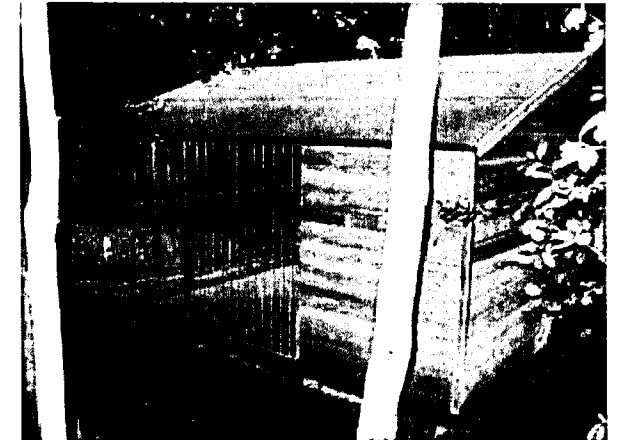
P1



P2



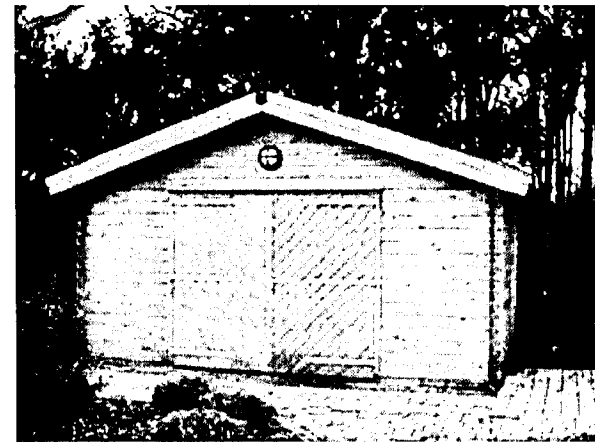
P3



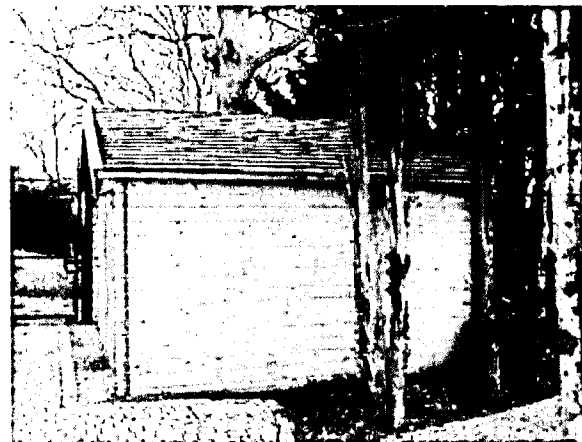
P4



P5



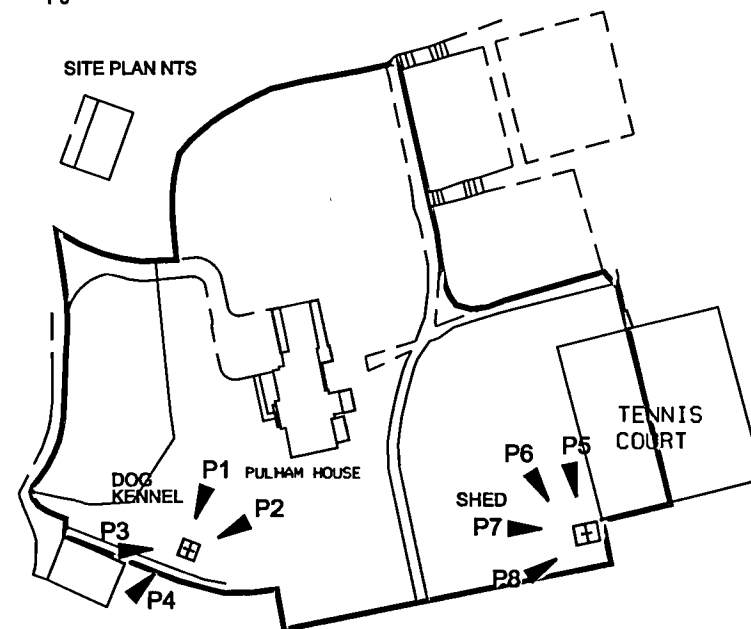
P6



P7



P8



PLANNING  
DEPARTMENT  
OFFICE COPY

11 MAY 2009

NO S: 2009/0697/AP

<b>GML Architects</b>	
40 Featherstone Street London EC1Y 8RE	Tel 020 7490 4299 Fax 020 7490 4084 info@gmlarchitects.co.uk
3338 PULHAM HOUSE CUCUMBER LANE HERTS AL9 6GJ	MAR 2009
	NTS
PHOTO SHEET	3338-02