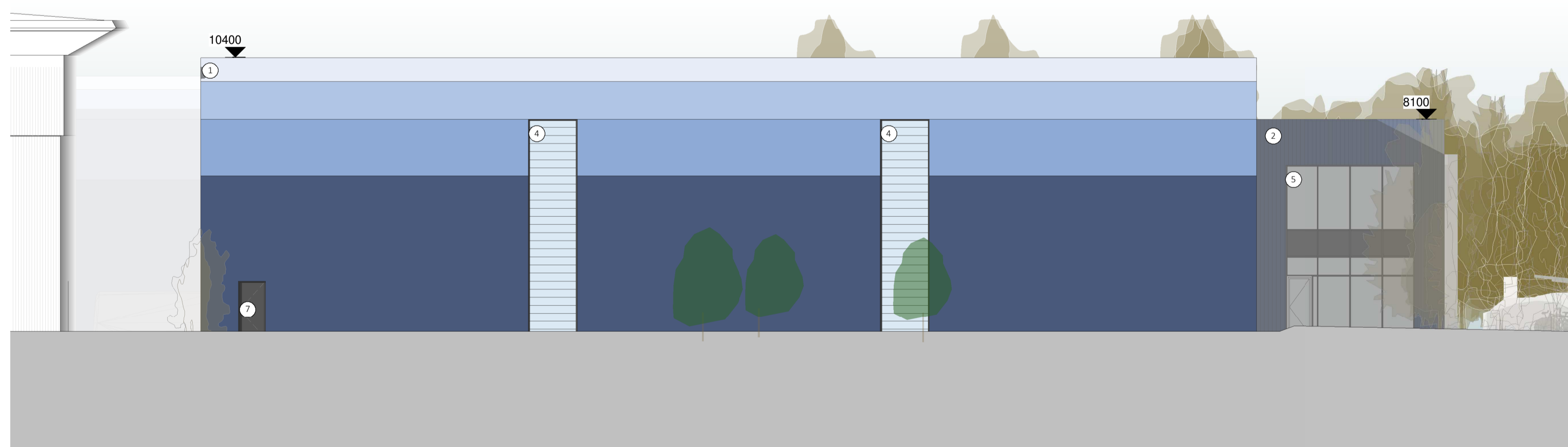


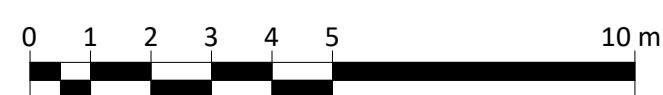
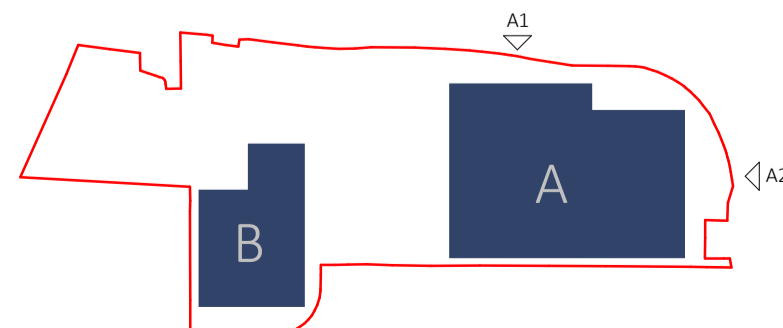
1 - Building A - Proposed North Elevation  
1 : 125



2 - Building A - Proposed East Elevation  
1 : 125

**Elevation Key**

- 1. Wall Cladding - Composite cladding laid horizontally (Various Shades)
- 2. Wall Cladding - Sinusoidal cladding laid vertically (Dark Blue)
- 3. Wall Cladding - Sinusoidal cladding laid vertically (Dark Blue)
- 4. Wall Cladding - Polycarbonate translucent cladding
- 5. Glazed Curtain Walling - PPC aluminium with PPC aluminium insulated spandrel panels
- 6. Entrance Door - Colour to match surrounding frame system
- 7. Personnel Door - Colour to match adjacent cladding
- 8. PPC metal canopy (RAL 7021 Dark Grey)
- 9. Loading Bay Doors - Colour to match surrounding canopy (RAL 7021 Dark Grey)
- 10. Wall Cladding - Colour to match adjacent loading bay doors (RAL 7021 Dark Grey)
- 11. Entrance Canopy - Colour to match adjacent curtain walling (RAL 7021 Dark Grey)
- 12. Bin / Plant Store - Hit and miss timber cladding
- 13. Bike shelter - Galvenised steel frame



**Note**

Building signage will be subject to a separate application  
Proposed trees are indicated at approximate install height but are intended to grow to maturity.

**Plot 5610 Hatfield**

Drawing title: **Building A - Proposed Elevations 1**      Amendments: **Planning Issue**  
 Drawing No.: **3502-SRA-XX-XX-D-A-PL-040**      Revision: **E**

Drawn by	Checked by	Approved by	A1 Scale	Date	Reason for Issue
RL	EM	-	As indicated	30/11/2022 16:54:39	Planning

**SRA ARCHITECTS**

Station House, Ashley Avenue Bath BA1 3DS | 01225 827444 | www.sra-architects.co.uk      © (UK 2021) SRA Architects LLP

**Notes**  
 SRA ARCHITECTS LLP accepts no liability for use of this drawing by parties other than the party for whom it was prepared, or for purposes other than those for which it was prepared.  
 When the above drawing is issued in DWG format it is an uncontrolled version issued to enable the recipient to prepare their own documents/ models/drawings for which they are solely responsible. It is based on background information current at the time of issue. SRA ARCHITECTS LLP accepts no liability for any such alterations or additions to or discrepancies arising out of changes to such background information which occur to that information after it is issued by SRA ARCHITECTS LLP.  
 Responsibility is not accepted for errors made by others in scaling from this drawing.