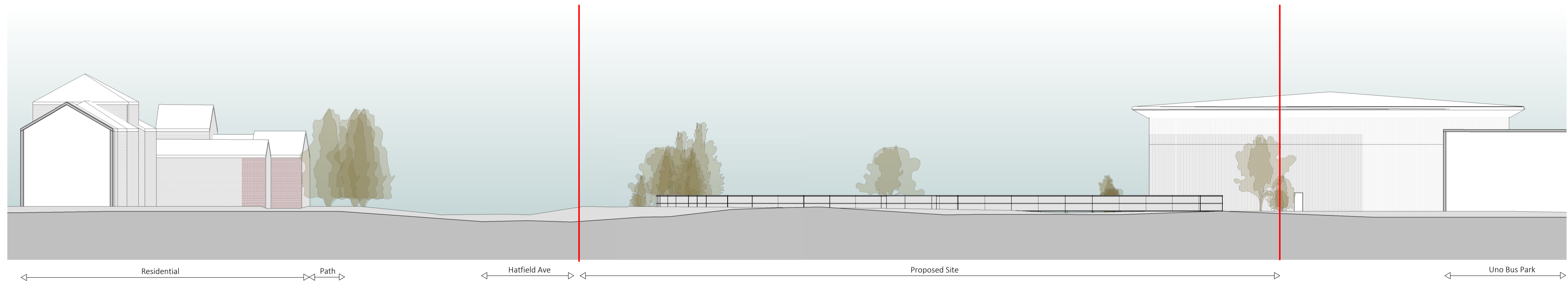
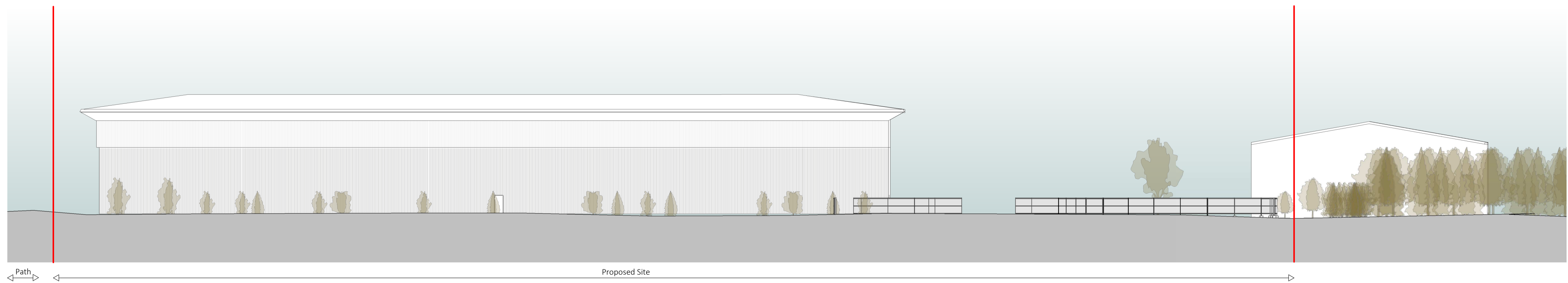




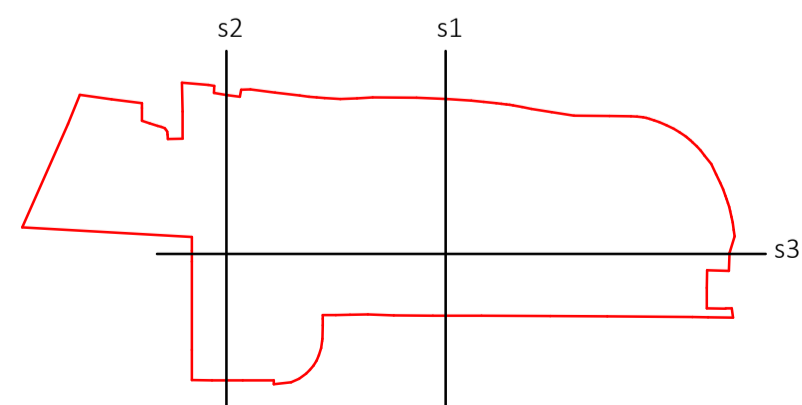
1 - Existing Site Section 1  
1 : 250



2 - Existing Site Section 2  
1 : 250



3 - Existing Site Section 3  
1 : 250



## Plot 5610 Hatfield

Drawing title  
**Existing Site Sections**

Amendments  
**Planning Issue**

Drawing No.  
**3502-SRA-XX-XX-D-A-PL-011**

Revision  
**C**

Drawn by	Checked by	Approved by	A1 Scale	Date	Reason for Issue
RL	EM	-	As indicated	17/11/2022 18:10:55	Planning

# SRA | ARCHITECTS

Station House, Ashley Avenue Bath BA1 3DS | 01225 827444 | [www.sra-architects.co.uk](http://www.sra-architects.co.uk) © (UK 2021) SRA Architects LLP.

**Notes**  
SRA ARCHITECTS LLP accepts no liability for use of this drawing by parties other than the party for whom it was prepared, or for purposes other than those for which it was prepared.  
When the above drawing is issued in DWG format it is an uncontrolled version issued to enable the recipient to prepare their own documents/ models/drawings for which they are solely responsible. It is based on background information current at the time of issue. SRA ARCHITECTS LLP accepts no liability for any such alterations or additions to or discrepancies arising out of changes to such background information which occur to that information after it is issued by SRA ARCHITECTS LLP.  
Responsibility is not accepted for errors made by others in scaling from this drawing.