
Lightning Packaging Services Hatfield AL10 9TY

Planning Document

December 2020

pb arc
Potters Bar Architects



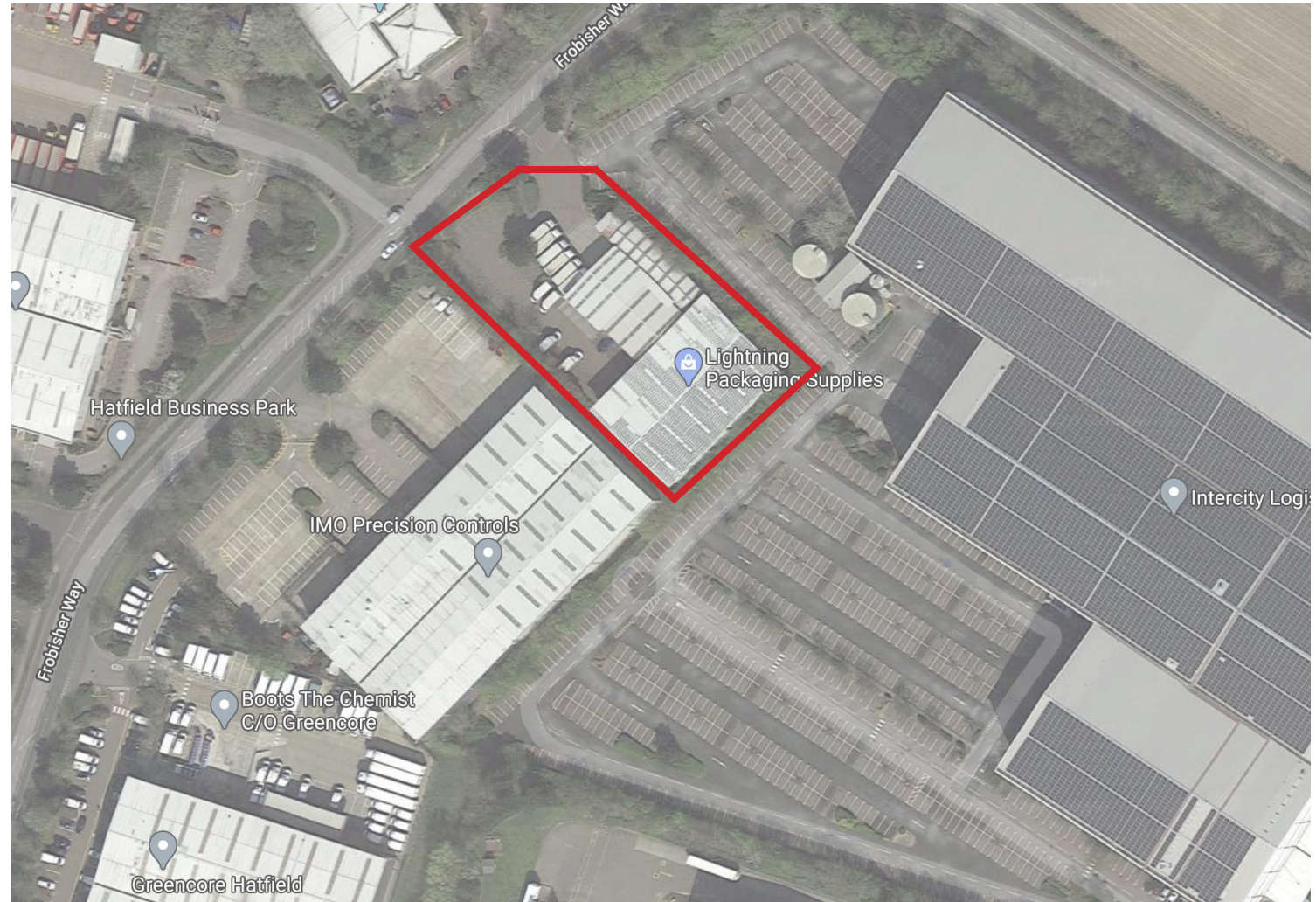
SITE LOCATION

The site occupies close to 2000m² of B8 warehouse space within Hatfield's industrial area.

Compared to neighbouring warehouse sites, the existing complex is relatively small and it is sought to extend the protected canopy space in order to safely house commercial supplies.



Site map



Location map

SITE PHOTOS



Site panorama



Warehouse interior



SW side elevation

SITE CONTEXT

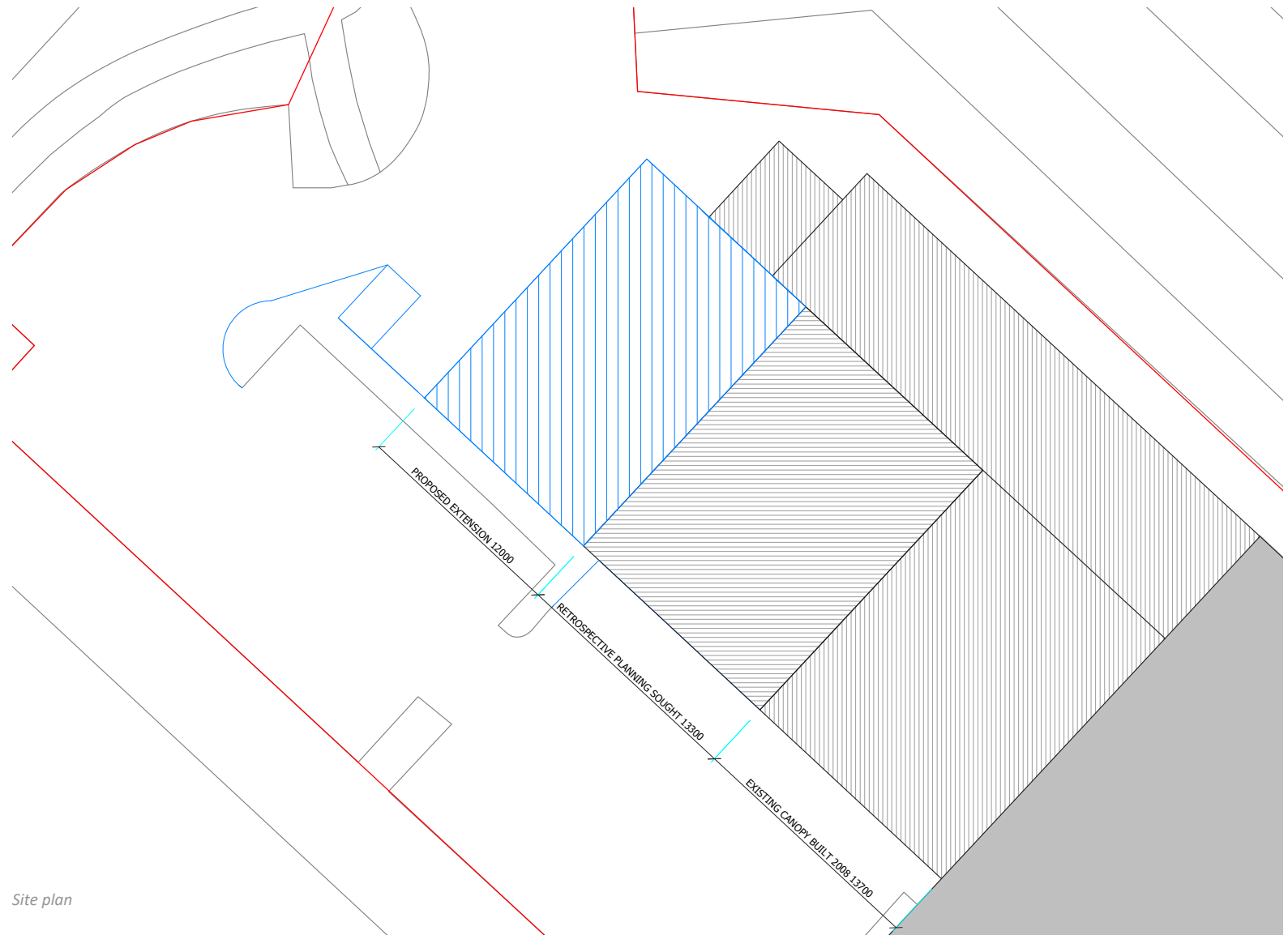
The existing warehouse was extended with a canopy over in 2008.

This was extended 3 years ago in 2017, without planning permission.

Retrospective permission is sought for this extension.

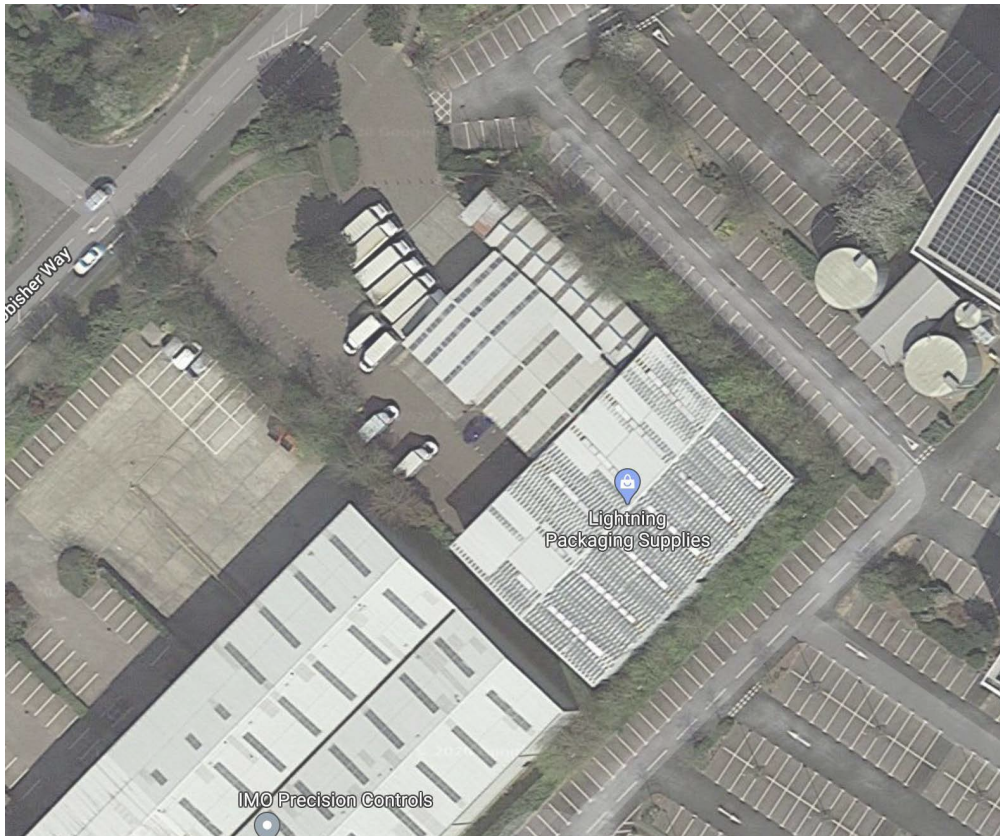
Planning consent is also sought for a new extension, which will replicated the style, scale and massing of the existing canopy.

This will ensure sufficient protection of commercial equipment and supplies, without having an adverse impact on vehicle turning circles or car parking arrangements.



Site plan

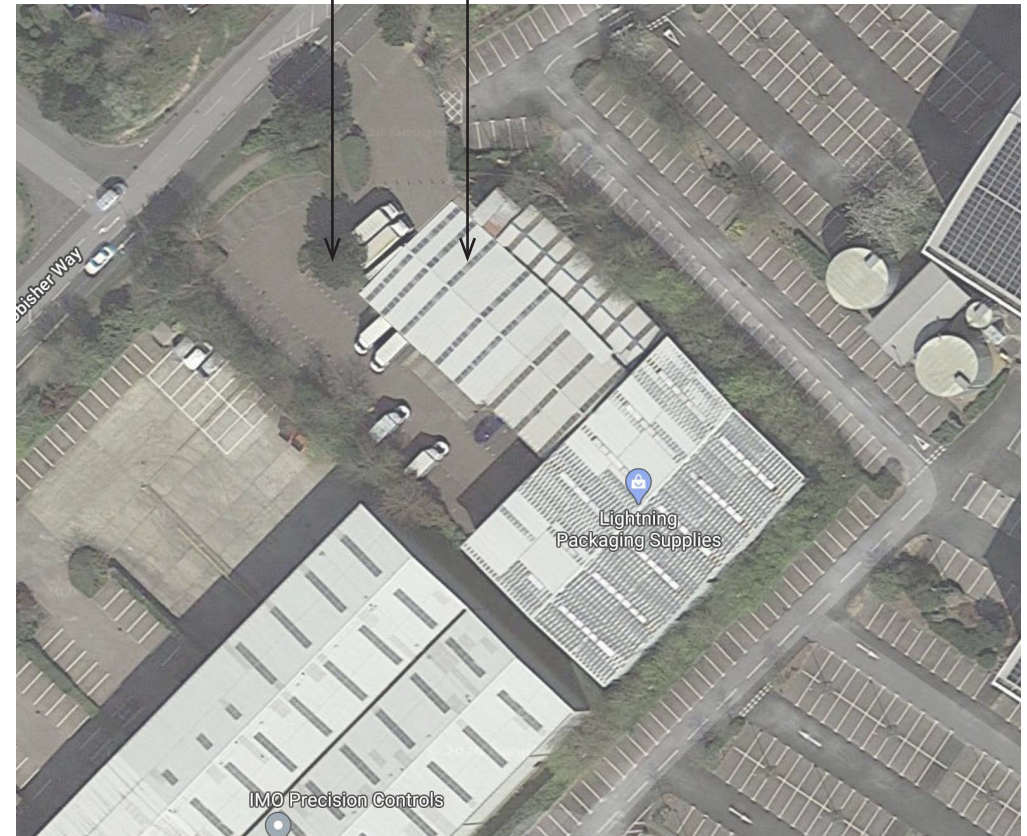
OVERVIEW



Existing warehouse

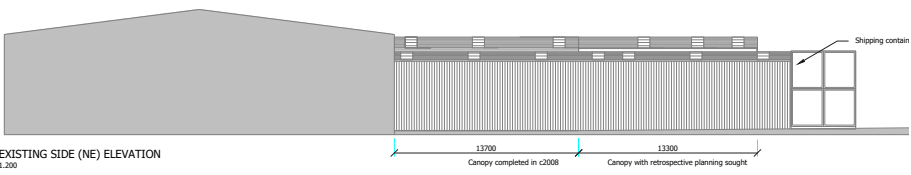
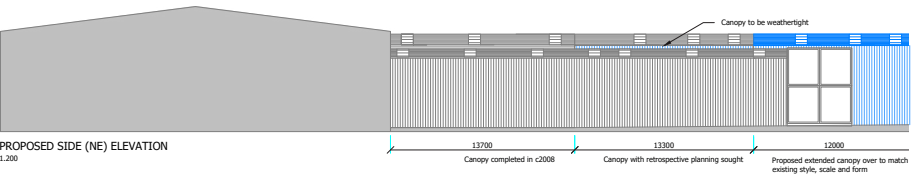
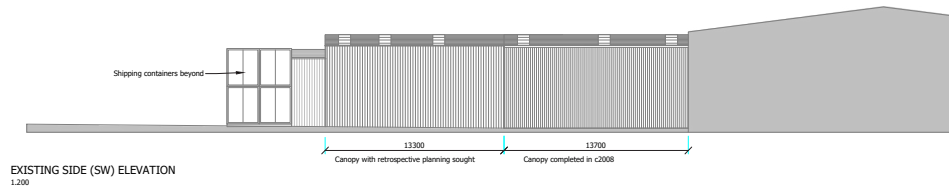
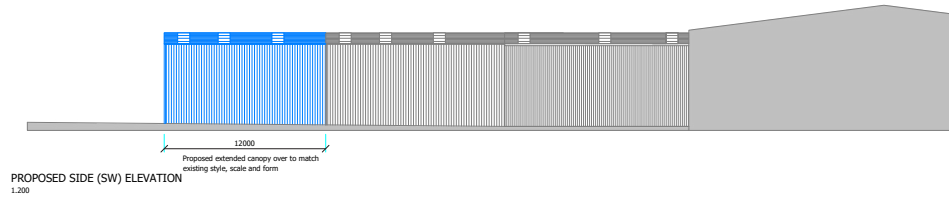
Bushes and tree cleared and armco barrier installed for safety measures

Canopy extended to replicated scale and massing of existing



Proposed extension

PROPOSALS



Elevations

