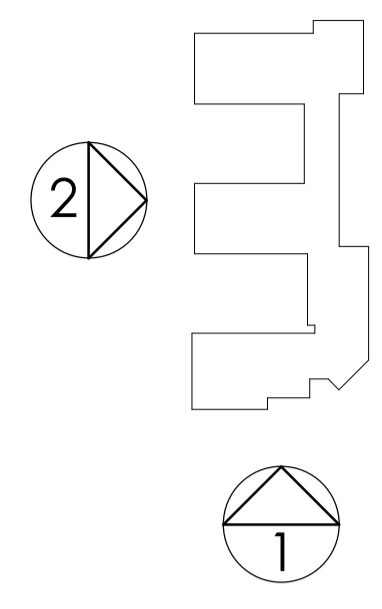
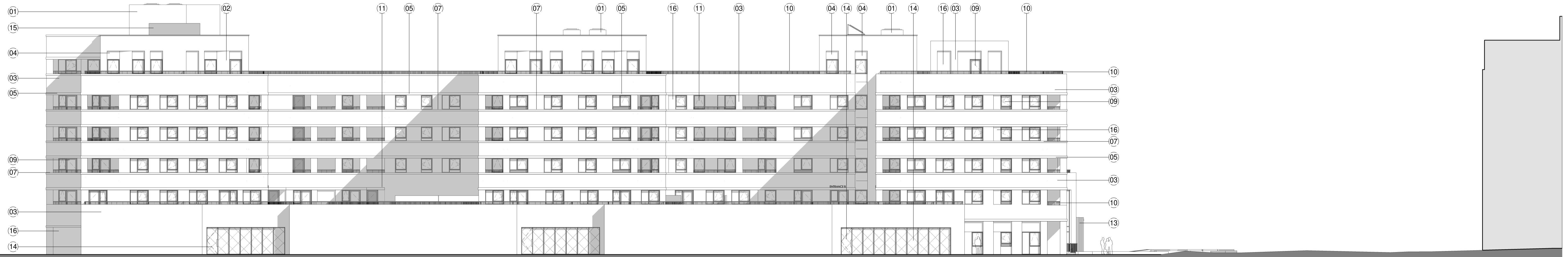


| rev  | date       | description                                 | drawn | check |
|------|------------|---|-------|-------|
| PL01 | 27.05.2022 | Issued for Planning Application             | PL    | SC    |
| PL02 | 04.11.22   | Proposal reduced to 6 storeys/141 dwellings | PL    | SC    |
| PL03 | 24.04.23   | Revised elevations with the reduced mass    | PL    | SC    |



**1 - Front Elevation (South)**  
 1 : 200

| KEY       |  |
|-----------|--|
| Key Value | Keynote Text                               |
| 01        | Yellow brick                               |
| 02        | Angled panel Yellow brick                  |
| 03        | White brick                                |
| 04        | Recessed panel Yellow brick                |
| 05        | White brick soldier course                 |
| 07        | Concrete banding                           |
| 08        | Green glazed brick                         |
| 09        | Dark grey aluminium window/door            |
| 10        | Dark grey steel balcony/terrace balustrade |
| 11        | Dark grey steel canopy                     |
| 12        | Dark grey steel signage                    |
| 13        | Dark grey steel frame                      |
| 14        | Dark grey mesh panel/door                  |
| 15        | Dark grey louvered panel/door              |
| 16        | Recessed panel White brick                 |



**2 - Side Elevation (West)**  
 1 : 200

