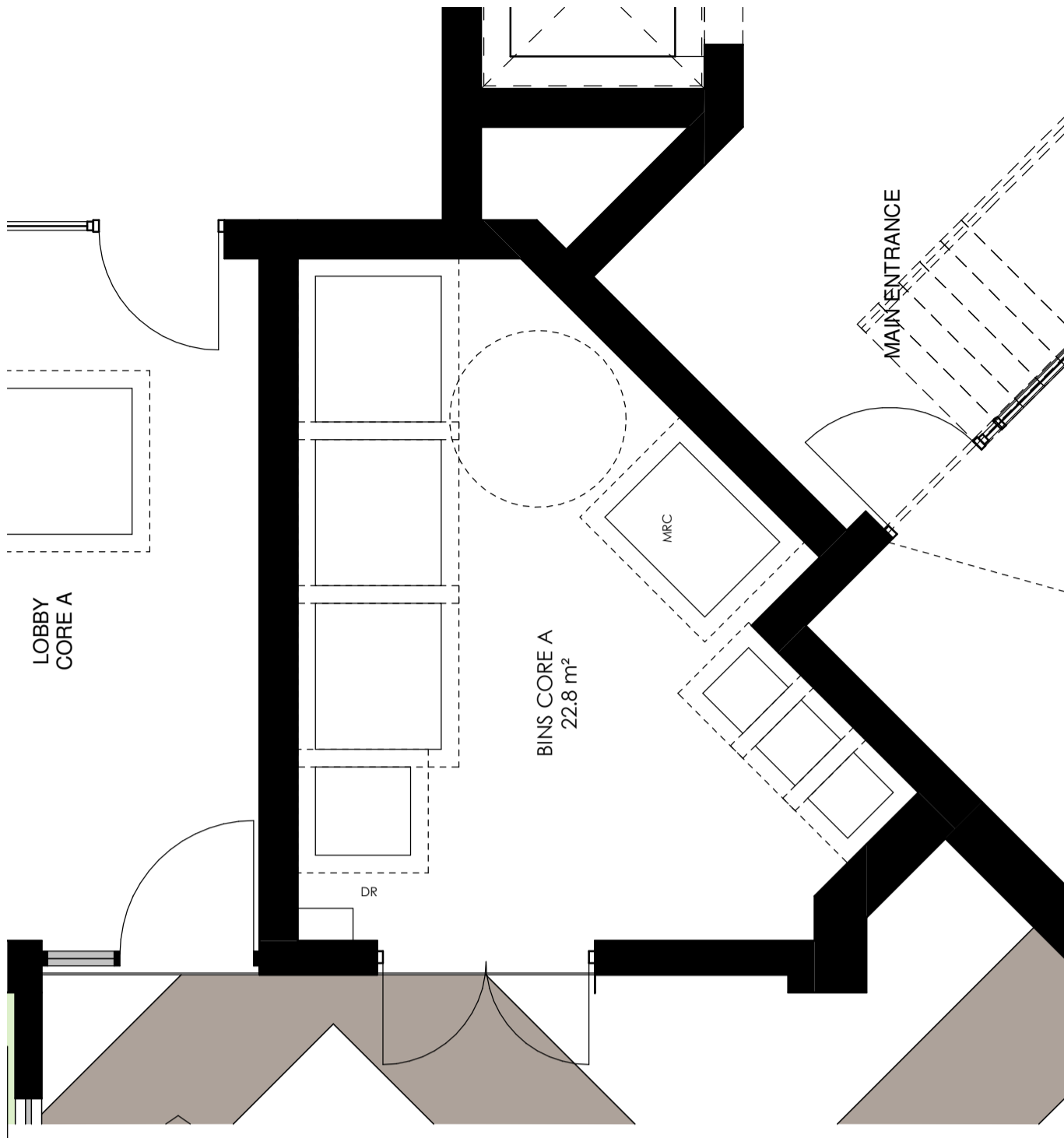
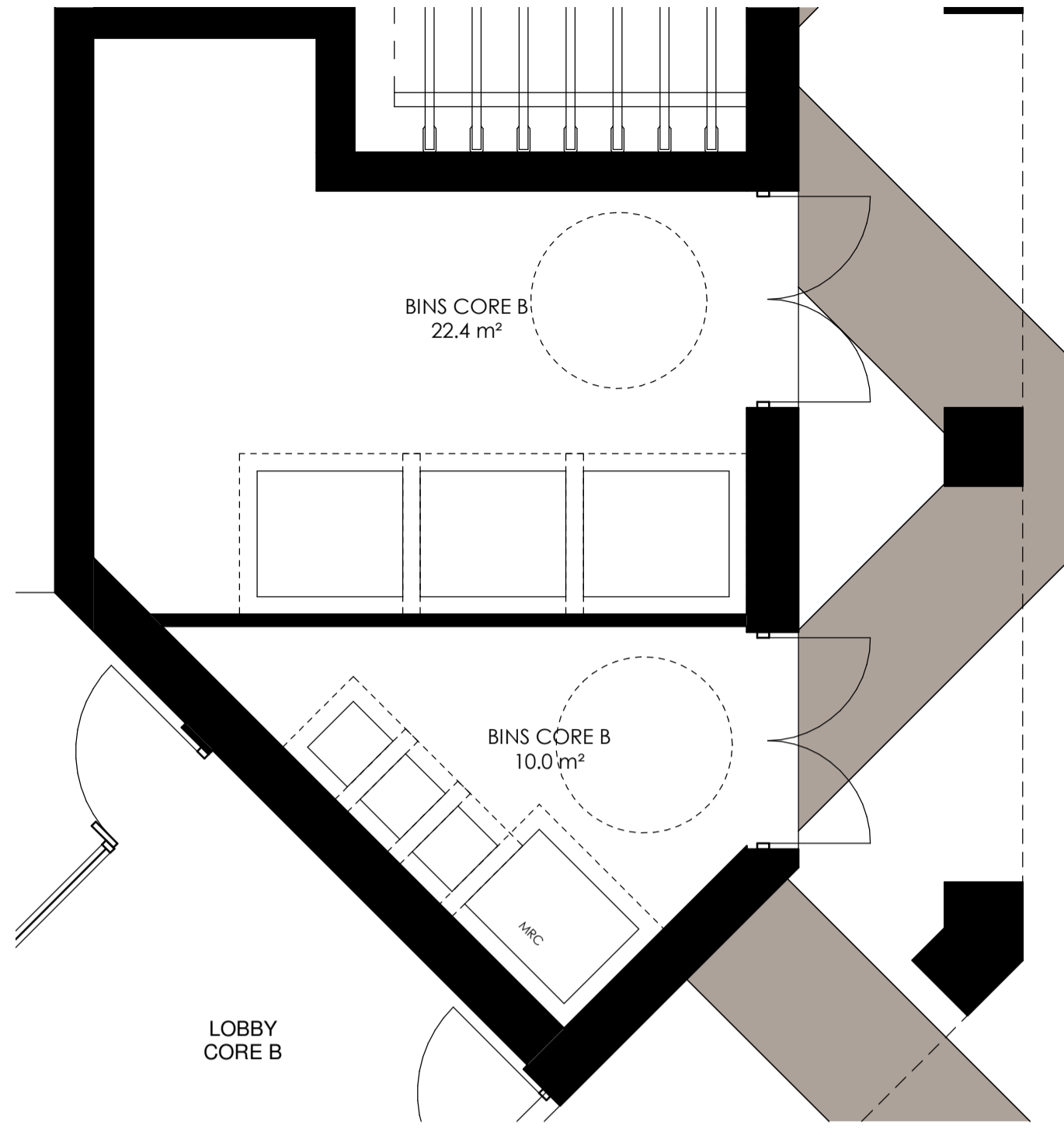


| rev | date | description | drawn | check |
|------|----------|--|-------|-------|
| PL01 | 24.04.23 | Revised plans with the reduced mass | PL | SC |
| PL02 | 23.06.05 | Additional 360 L bin added to the refuse store A&D | PL | SC |



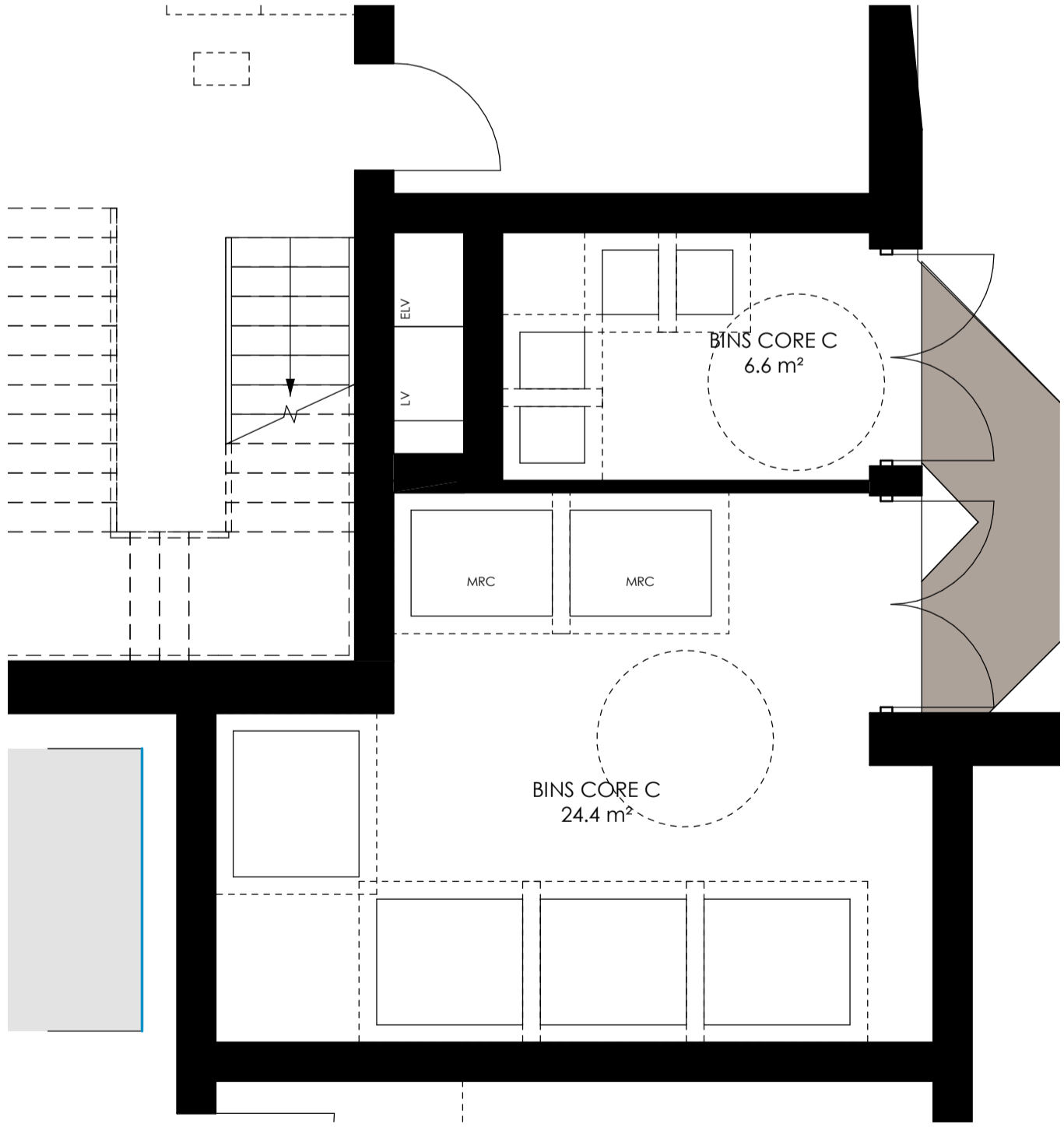
L00_50 BINS_CORE_A
1 : 50

| Dwelling Schedule - ALL RESI by CORE_A | | | | |
|--|---------------|-------|-------|----------------|
| Unit Type | Dwelling Area | Level | Count | Dwelling Block |
| 1B2P | 50.0 m² | L02 | 1 | core A |
| 1B2P | 50.0 m² | L03 | 1 | core A |
| 1B2P | 50.0 m² | L04 | 1 | core A |
| 1B2P | 53.6 m² | L02 | 1 | core A |
| 1B2P | 53.6 m² | L03 | 1 | core A |
| 1B2P | 53.6 m² | L04 | 1 | core A |
| 1B2P | 50.0 m² | L01 | 1 | core A |
| 7 | | | | |
| 1B2P WCH | 67.7 m² | L00 | 1 | core A |
| 1 | | | | |
| 2B3P | 61.5 m² | L01 | 1 | core A |
| 1 | | | | |
| 2B3P WCH | 75.0 m² | L01 | 1 | core A |
| 2B3P WCH | 75.0 m² | L02 | 1 | core A |
| 2B3P WCH | 75.0 m² | L03 | 1 | core A |
| 2B3P WCH | 75.0 m² | L04 | 1 | core A |
| 2B3P WCH | 83.5 m² | L00 | 1 | core A |
| 5 | | | | |
| 2B4P | 72.2 m² | L01 | 1 | core A |
| 2B4P | 72.2 m² | L02 | 1 | core A |
| 2B4P | 72.8 m² | L02 | 1 | core A |
| 2B4P | 74.5 m² | L02 | 1 | core A |
| 2B4P | 72.2 m² | L03 | 1 | core A |
| 2B4P | 72.8 m² | L04 | 1 | core A |
| 2B4P | 72.2 m² | L04 | 1 | core A |
| 2B4P | 74.4 m² | L01 | 1 | core A |
| 2B4P | 74.5 m² | L03 | 1 | core A |
| 2B4P | 72.8 m² | L03 | 1 | core A |
| 2B4P | 74.5 m² | L04 | 1 | core A |
| 11 | | | | |
| core A: 25 | | | 25 | |
| Grand total: | | | 25 | |



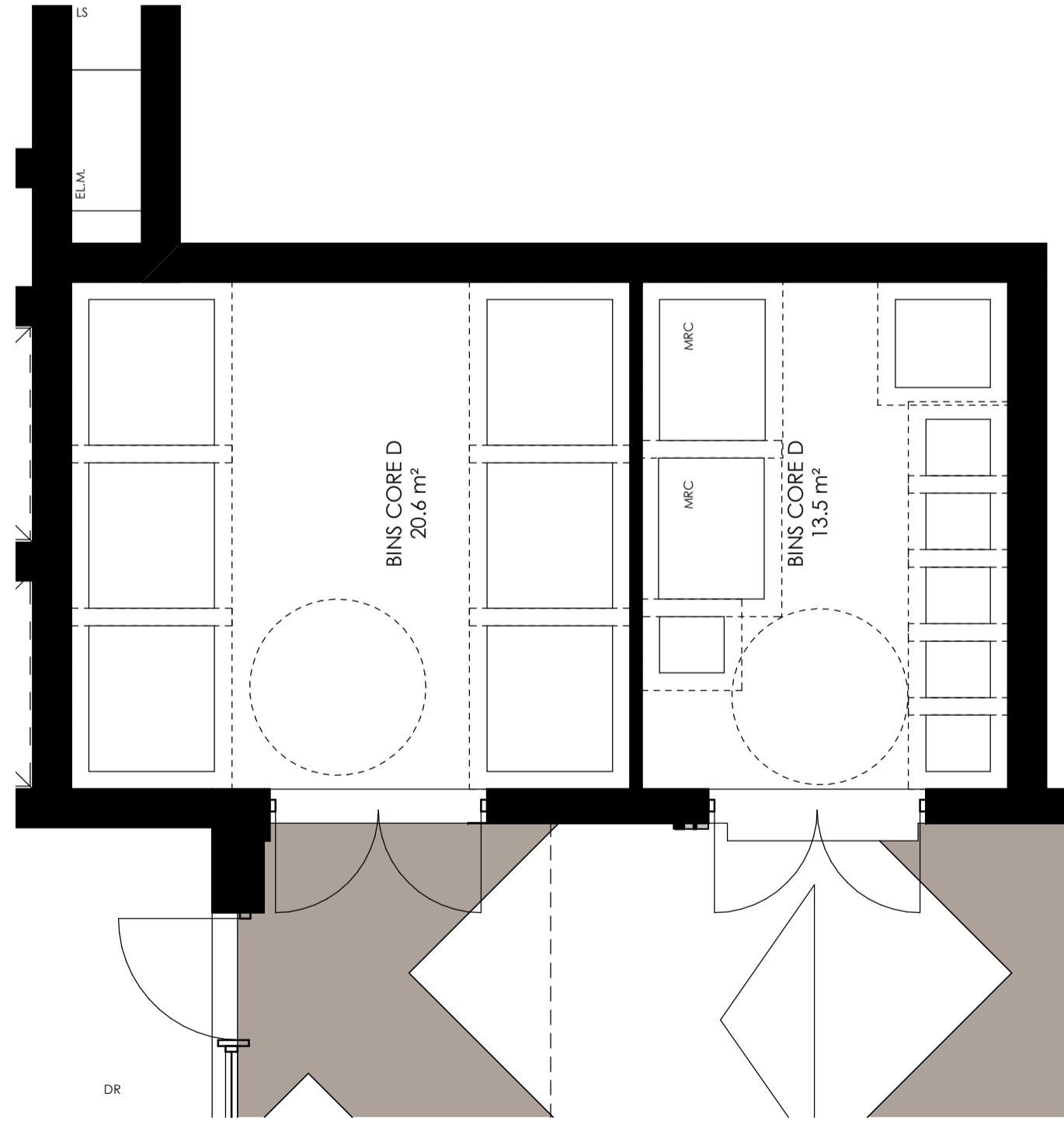
L00_50 BINS_CORE_B
1 : 50

| Dwelling Schedule - ALL RESI by CORE_B | | | | |
|--|---------------|-------|-------|----------------|
| Unit Type | Dwelling Area | Level | Count | Dwelling Block |
| 1B2P | 58.9 m² | L01 | 1 | core B |
| 1B2P | 58.9 m² | L02 | 1 | core B |
| 1B2P | 51.1 m² | L02 | 1 | core B |
| 1B2P | 58.9 m² | L03 | 1 | core B |
| 1B2P | 51.0 m² | L03 | 1 | core B |
| 1B2P | 58.9 m² | L04 | 1 | core B |
| 1B2P | 50.2 m² | L04 | 1 | core B |
| 1B2P | 51.0 m² | L01 | 1 | core B |
| 1B2P | 57.3 m² | L02 | 1 | core B |
| 1B2P | 57.3 m² | L03 | 1 | core B |
| 1B2P | 50.2 m² | L03 | 1 | core B |
| 1B2P | 57.5 m² | L04 | 1 | core B |
| 1B2P | 50.0 m² | L01 | 1 | core B |
| 1B2P | 50.2 m² | L02 | 1 | core B |
| 1B2P | 50.2 m² | L04 | 1 | core B |
| 1B2P | 51.0 m² | L04 | 1 | core B |
| 1B2P | 50.2 m² | L03 | 1 | core B |
| 1B2P | 50.2 m² | L02 | 1 | core B |
| 1B2P | 50.2 m² | L01 | 1 | core B |
| 1B2P | 54.7 m² | L02 | 1 | core B |
| 1B2P | 54.7 m² | L03 | 1 | core B |
| 1B2P | 54.5 m² | L04 | 1 | core B |
| 22 | | | | |
| 2B4P | 77.4 m² | L01 | 1 | core B |
| 2B4P | 75.3 m² | L04 | 1 | core B |
| 2B4P | 75.3 m² | L02 | 1 | core B |
| 2B4P | 74.8 m² | L03 | 1 | core B |
| 4 | | | | |
| 3B5P | 94.4 m² | L01 | 1 | core B |
| 1 | | | | |
| core B: 27 | | | 27 | |
| Grand total: | | | 27 | |



L00_50 BINS_CORE_C
1 : 50

| Dwelling Schedule - ALL RESI by CORE_C | | | | |
|--|---------------|-------|-------|----------------|
| Unit Type | Dwelling Area | Level | Count | Dwelling Block |
| 1B2P | 50.0 m² | L02 | 1 | core C |
| 1B2P | 53.2 m² | L02 | 1 | core C |
| 1B2P | 50.0 m² | L02 | 1 | core C |
| 1B2P | 54.1 m² | L02 | 1 | core C |
| 1B2P | 50.0 m² | L03 | 1 | core C |
| 1B2P | 50.7 m² | L03 | 1 | core C |
| 1B2P | 50.0 m² | L03 | 1 | core C |
| 1B2P | 53.2 m² | L03 | 1 | core C |
| 1B2P | 50.0 m² | L04 | 1 | core C |
| 1B2P | 50.7 m² | L04 | 1 | core C |
| 1B2P | 50.0 m² | L04 | 1 | core C |
| 1B2P | 53.2 m² | L04 | 1 | core C |
| 1B2P | 50.0 m² | L04 | 1 | core C |
| 1B2P | 50.1 m² | L05 | 1 | core C |
| 1B2P | 50.1 m² | L05 | 1 | core C |
| 1B2P | 50.0 m² | L02 | 1 | core C |
| 1B2P | 50.0 m² | L03 | 1 | core C |
| 1B2P | 54.1 m² | L04 | 1 | core C |
| 1B2P | 54.6 m² | L03 | 1 | core C |
| 1B2P | 50.8 m² | L02 | 1 | core C |
| 1B2P | 49.9 m² | L05 | 1 | core C |
| 1B2P | 51.4 m² | L01 | 1 | core C |
| 22 | | | | |
| 1B2P WCH | 67.4 m² | L01 | 1 | core C |
| 1B2P WCH | 65.1 m² | L01 | 1 | core C |
| 2 | | | | |
| 2B3P | 63.6 m² | L05 | 1 | core C |
| 1 | | | | |
| 2B3P WCH | 82.9 m² | L02 | 1 | core C |
| 2B3P WCH | 82.9 m² | L03 | 1 | core C |
| 2B3P WCH | 82.9 m² | L04 | 1 | core C |
| 3 | | | | |
| 2B4P | 76.3 m² | L02 | 1 | core C |
| 2B4P | 76.3 m² | L03 | 1 | core C |
| 2B4P | 76.3 m² | L04 | 1 | core C |
| 3 | | | | |
| 2B4P WCH | 91.3 m² | L01 | 1 | core C |
| 2B4P WCH | 91.3 m² | L01 | 1 | core C |
| 2 | | | | |
| 3B5P | 92.3 m² | L05 | 1 | core C |
| 1 | | | | |
| core C: 34 | | | 34 | |
| Grand total: | | | 34 | |



L00_50 BINS_CORE_D
1 : 50

| Dwelling Schedule - ALL RESI by CORE_D | | | | |
|--|---------------|-------|-------|----------------|
| Unit Type | Dwelling Area | Level | Count | Dwelling Block |
| 1B1P STUDIO | 37.8 m² | L05 | 1 | core D |
| 1 | | | | |
| 1B2P | 52.0 m² | L01 | 1 | core D |
| 1B2P | 50.0 m² | L01 | 1 | core D |
| 1B2P | 51.0 m² | L01 | 1 | core D |
| 1B2P | 51.5 m² | L01 | 1 | core D |
| 1B2P | 51.5 m² | L01 | 1 | core D |
| 1B2P | 50.0 m² | L02 | 1 | core D |
| 1B2P | 50.0 m² | L02 | 1 | core D |
| 1B2P | 52.3 m² | L02 | 1 | core D |
| 1B2P | 51.0 m² | L02 | 1 | core D |
| 1B2P | 50.0 m² | L03 | 1 | core D |
| 1B2P | 50.0 m² | L03 | 1 | core D |
| 1B2P | 52.3 m² | L03 | 1 | core D |
| 1B2P | 50.0 m² | L03 | 1 | core D |
| 1B2P | 51.4 m² | L03 | 1 | core D |
| 1B2P | 50.0 m² | L04 | 1 | core D |
| 1B2P | 50.0 m² | L04 | 1 | core D |
| 1B2P | 52.3 m² | L04 | 1 | core D |
| 1B2P | 51.0 m² | L04 | 1 | core D |
| 1B2P | 51.4 m² | L04 | 1 | core D |
| 1B2P | 50.0 m² | L05 | 1 | core D |
| 1B2P | 50.0 m² | L05 | 1 | core D |
| 1B2P | 51.0 m² | L03 | 1 | core D |
| 1B2P | 51.4 m² | L02 | 1 | core D |
| 1B2P | 55.9 m² | L05 | 1 | core D |
| 1B2P | 50.4 m² | L01 | 1 | core D |
| 1B2P | 56.3 m² | L05 | 1 | core D |
| 1B2P | 50.1 m² | L05 | 1 | core D |
| 1B2P | 50.0 m² | L02 | 1 | core D |
| 1B2P | 50.0 m² | L01 | 1 | core D |
| 1B2P | 50.0 m² | L02 | 1 | core D |
| 1B2P | 50.0 m² | L03 | 1 | core D |
| 1B2P | 50.0 m² | L04 | 1 | core D |
| 1B2P | 53.0 m² | L05 | 1 | core D |
| 1B2P | 50.0 m² | L05 | 1 | core D |
| 35 | | | | |
| 2B3P | 64.3 m² | L01 | 1 | core D |
| 2B3P | 61.0 m² | L02 | 1 | core D |

| Dwelling Schedule - ALL RESI by CORE_D | | | | |
|--|---------------|-------|-------|----------------|
| Unit Type | Dwelling Area | Level | Count | Dwelling Block |
| 2B3P | 64.3 m² | L02 | 1 | core D |
| 2B3P | 61.0 m² | L03 | 1 | core D |
| 2B3P | 64.3 m² | L03 | 1 | core D |
| 2B3P | 65.1 m² | L04 | 1 | core D |
| 2B3P | 61.0 m² | L04 | 1 | core D |
| 2B3P | 64.3 m² | L04 | 1 | core D |
| 2B3P | 64.0 m² | L05 | 1 | core D |
| 2B3P | 65.1 m² | L01 | 1 | core D |
| 2B3P | 65.1 m² | L03 | 1 | core D |
| 2B3P | 65.1 m² | L02 | 1 | core D |
| 12 | | | | |
| 2B3P WCH | 83.5 m² | L01 | 1 | core D |
| 2B3P WCH | 83.8 m² | L01 | 1 | core D |
| 2 | | | | |
| 2B4P | 72.7 m² | L02 | 1 | core D |
| 2B4P | 71.4 m² | L02 | 1 | core D |
| 2B4P | 72.7 m² | L03 | 1 | core D |
| 2B4P | 71.4 m² | L03 | 1 | core D |
| 2B4P | 71.4 m² | L04 | 1 | core D |
| 2B4P | 72.7 m² | L04 | 1 | core D |
| 6 | | | | |
| core D: 56 | | | 56 | |
| Grand total: | | | 56 | |

