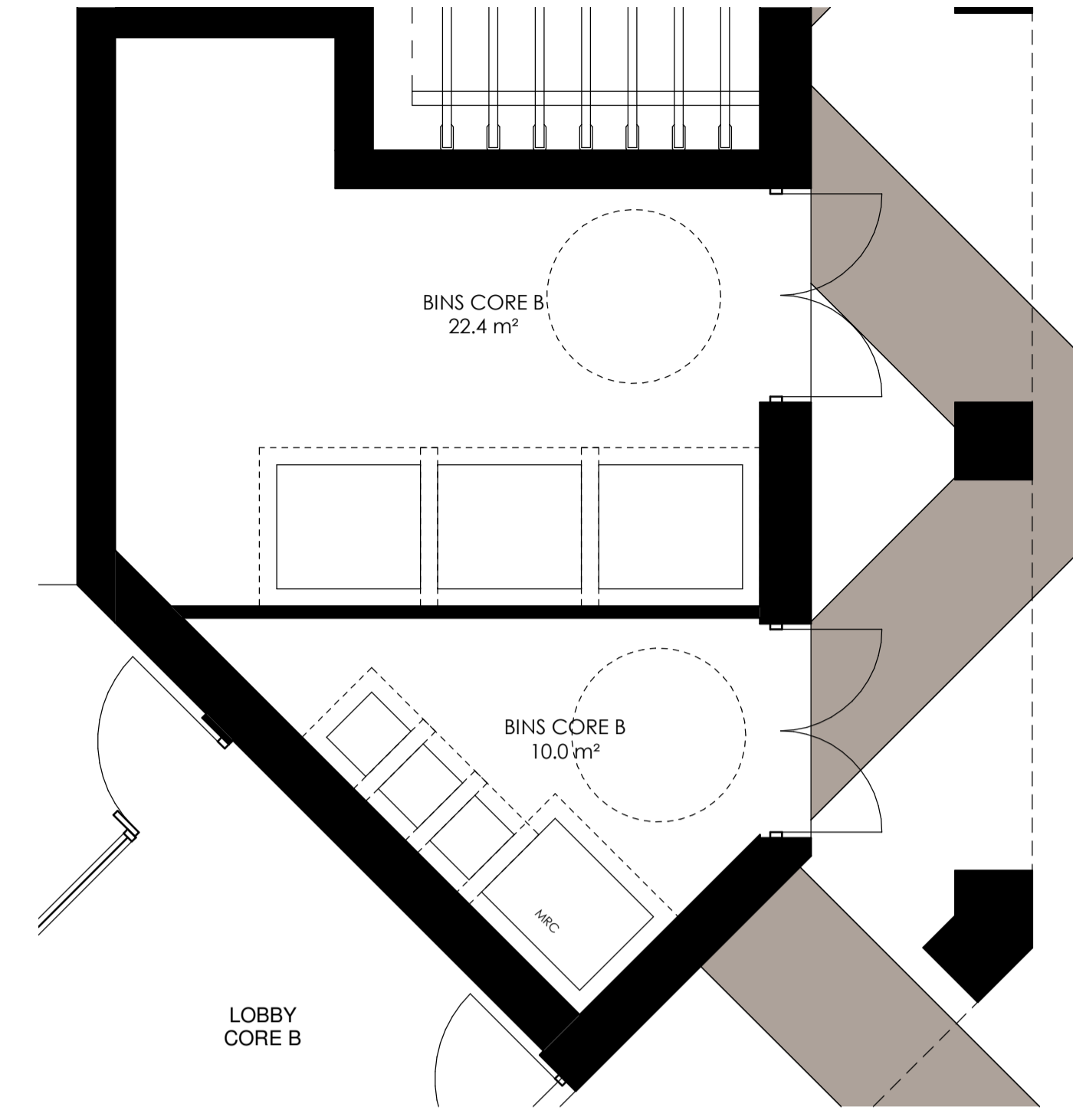


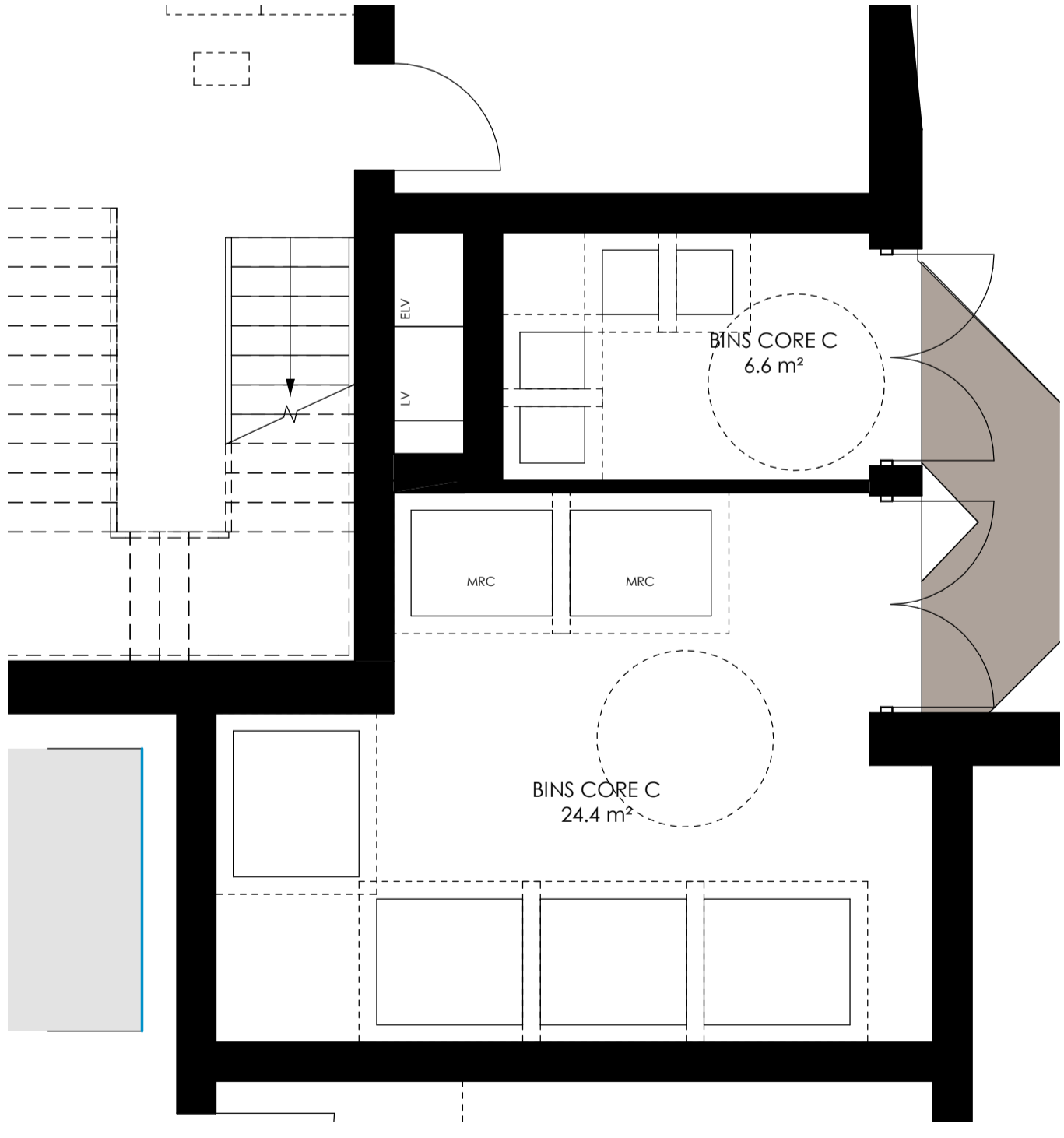
**L00\_50 BINS\_CORE\_A**  
1 : 50

Dwelling Schedule - ALL RESI by CORE_A				
Unit Type	Dwelling Area	Level	Count	Dwelling Block
1B2P	50.0 m²	L02	1	core A
1B2P	50.0 m²	L03	1	core A
1B2P	50.0 m²	L04	1	core A
1B2P	53.6 m²	L02	1	core A
1B2P	53.6 m²	L03	1	core A
1B2P	53.6 m²	L04	1	core A
1B2P	50.0 m²	L01	1	core A
7				
1B2P WCH	67.7 m²	L00	1	core A
1				
2B3P	61.5 m²	L01	1	core A
1				
2B3P WCH	75.0 m²	L01	1	core A
2B3P WCH	75.0 m²	L02	1	core A
2B3P WCH	75.0 m²	L03	1	core A
2B3P WCH	75.0 m²	L04	1	core A
2B3P WCH	83.5 m²	L00	1	core A
5				
2B4P	72.2 m²	L01	1	core A
2B4P	72.2 m²	L02	1	core A
2B4P	72.8 m²	L02	1	core A
2B4P	74.5 m²	L02	1	core A
2B4P	72.2 m²	L03	1	core A
2B4P	72.8 m²	L04	1	core A
2B4P	72.2 m²	L04	1	core A
2B4P	74.4 m²	L01	1	core A
2B4P	74.5 m²	L03	1	core A
2B4P	72.8 m²	L03	1	core A
2B4P	74.5 m²	L04	1	core A
11				
core A: 25				25
Grand total: 25				25



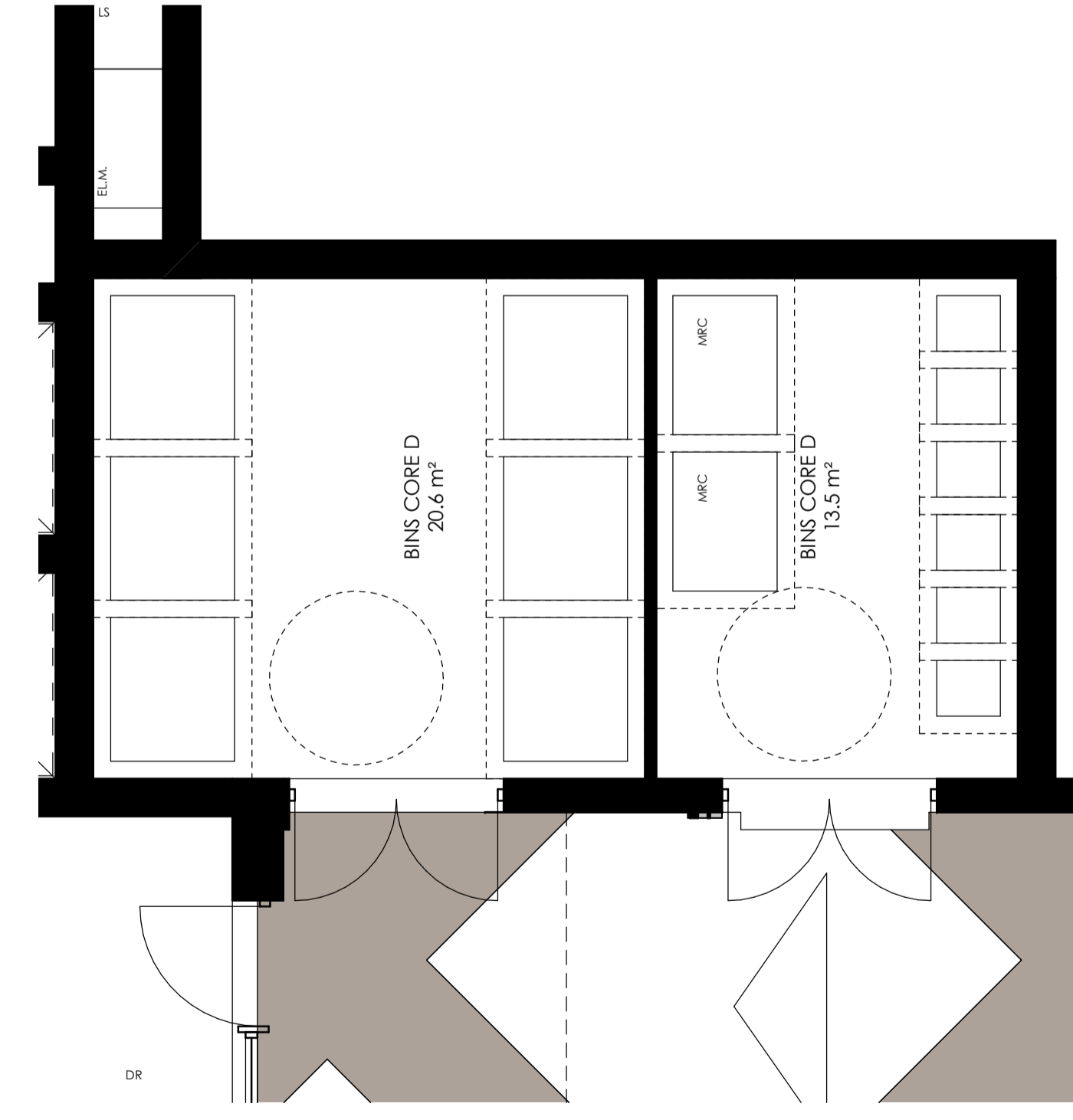
**L00\_50 BINS\_CORE\_B**  
1 : 50

Dwelling Schedule - ALL RESI by CORE_B				
Unit Type	Dwelling Area	Level	Count	Dwelling Block
1B2P	58.9 m²	L01	1	core B
1B2P	58.9 m²	L02	1	core B
1B2P	51.1 m²	L02	1	core B
1B2P	58.9 m²	L03	1	core B
1B2P	51.0 m²	L03	1	core B
1B2P	58.9 m²	L04	1	core B
1B2P	50.2 m²	L04	1	core B
1B2P	51.0 m²	L01	1	core B
1B2P	57.3 m²	L02	1	core B
1B2P	57.3 m²	L03	1	core B
1B2P	50.2 m²	L03	1	core B
1B2P	57.5 m²	L04	1	core B
1B2P	50.0 m²	L01	1	core B
1B2P	50.2 m²	L02	1	core B
1B2P	50.2 m²	L04	1	core B
1B2P	51.0 m²	L04	1	core B
1B2P	50.2 m²	L03	1	core B
1B2P	50.2 m²	L02	1	core B
1B2P	50.2 m²	L01	1	core B
1B2P	54.7 m²	L02	1	core B
1B2P	54.7 m²	L03	1	core B
1B2P	54.5 m²	L04	1	core B
22				
2B4P	77.4 m²	L01	1	core B
2B4P	75.3 m²	L04	1	core B
2B4P	75.3 m²	L02	1	core B
2B4P	74.8 m²	L03	1	core B
4				
3B5P	94.4 m²	L01	1	core B
1				
core B: 27				27
Grand total: 27				27



**L00\_50 BINS\_CORE\_C**  
1 : 50

Dwelling Schedule - ALL RESI by CORE_C				
Unit Type	Dwelling Area	Level	Count	Dwelling Block
1B2P	50.0 m²	L02	1	core C
1B2P	53.2 m²	L02	1	core C
1B2P	50.0 m²	L02	1	core C
1B2P	54.1 m²	L02	1	core C
1B2P	50.0 m²	L03	1	core C
1B2P	50.7 m²	L03	1	core C
1B2P	50.0 m²	L03	1	core C
1B2P	53.2 m²	L03	1	core C
1B2P	50.0 m²	L04	1	core C
1B2P	50.7 m²	L04	1	core C
1B2P	50.0 m²	L04	1	core C
1B2P	53.2 m²	L04	1	core C
1B2P	50.0 m²	L04	1	core C
1B2P	50.1 m²	L05	1	core C
1B2P	50.1 m²	L05	1	core C
1B2P	50.0 m²	L02	1	core C
1B2P	50.0 m²	L03	1	core C
1B2P	54.1 m²	L04	1	core C
1B2P	54.6 m²	L03	1	core C
1B2P	50.8 m²	L02	1	core C
1B2P	49.9 m²	L05	1	core C
1B2P	51.4 m²	L01	1	core C
22				
1B2P WCH	67.4 m²	L01	1	core C
1B2P WCH	65.1 m²	L01	1	core C
2				
2B3P	63.6 m²	L05	1	core C
1				
2B3P WCH	82.9 m²	L02	1	core C
2B3P WCH	82.9 m²	L03	1	core C
2B3P WCH	82.9 m²	L04	1	core C
3				
2B4P	76.3 m²	L02	1	core C
2B4P	76.3 m²	L03	1	core C
2B4P	76.3 m²	L04	1	core C
3				
2B4P WCH	91.3 m²	L01	1	core C
2B4P WCH	91.3 m²	L01	1	core C
2				
3B5P	92.3 m²	L05	1	core C
1				
core C: 34				34
Grand total: 34				34



**L00\_50 BINS\_CORE\_D**  
1 : 50

Dwelling Schedule - ALL RESI by CORE_D				
Unit Type	Dwelling Area	Level	Count	Dwelling Block
1B1P STUDIO	37.8 m²	L05	1	core D
1				
1B2P	52.0 m²	L01	1	core D
1B2P	50.0 m²	L01	1	core D
1B2P	51.0 m²	L01	1	core D
1B2P	51.5 m²	L01	1	core D
1B2P	51.5 m²	L01	1	core D
1B2P	50.0 m²	L02	1	core D
1B2P	50.0 m²	L02	1	core D
1B2P	52.3 m²	L02	1	core D
1B2P	51.0 m²	L02	1	core D
1B2P	50.0 m²	L03	1	core D
1B2P	50.0 m²	L03	1	core D
1B2P	52.3 m²	L03	1	core D
1B2P	50.0 m²	L03	1	core D
1B2P	51.4 m²	L03	1	core D
1B2P	50.0 m²	L04	1	core D
1B2P	50.0 m²	L04	1	core D
1B2P	52.3 m²	L04	1	core D
1B2P	51.0 m²	L04	1	core D
1B2P	51.4 m²	L04	1	core D
1B2P	50.0 m²	L05	1	core D
1B2P	50.0 m²	L05	1	core D
1B2P	51.0 m²	L03	1	core D
1B2P	51.4 m²	L02	1	core D
1B2P	55.9 m²	L05	1	core D
1B2P	50.4 m²	L01	1	core D
1B2P	56.3 m²	L05	1	core D
1B2P	50.1 m²	L05	1	core D
1B2P	50.0 m²	L02	1	core D
1B2P	50.0 m²	L01	1	core D
1B2P	50.0 m²	L02	1	core D
1B2P	50.0 m²	L03	1	core D
1B2P	50.0 m²	L04	1	core D
1B2P	53.0 m²	L05	1	core D
1B2P	50.0 m²	L05	1	core D
35				
2B3P	64.3 m²	L01	1	core D
2B3P	61.0 m²	L02	1	core D

Dwelling Schedule - ALL RESI by CORE_D				
Unit Type	Dwelling Area	Level	Count	Dwelling Block
2B3P	64.3 m²	L02	1	core D
2B3P	61.0 m²	L03	1	core D
2B3P	64.3 m²	L03	1	core D
2B3P	65.1 m²	L04	1	core D
2B3P	61.0 m²	L04	1	core D
2B3P	64.3 m²	L04	1	core D
2B3P	64.0 m²	L05	1	core D
2B3P	65.1 m²	L01	1	core D
2B3P	65.1 m²	L03	1	core D
2B3P	65.1 m²	L02	1	core D
12				
2B3P WCH	83.5 m²	L01	1	core D
2B3P WCH	83.8 m²	L01	1	core D
2				
2B4P	72.7 m²	L02	1	core D
2B4P	71.4 m²	L02	1	core D
2B4P	72.7 m²	L03	1	core D
2B4P	71.4 m²	L03	1	core D
2B4P	71.4 m²	L04	1	core D
2B4P	72.7 m²	L04	1	core D
6				
core D: 56				56
Grand total: 56				56

