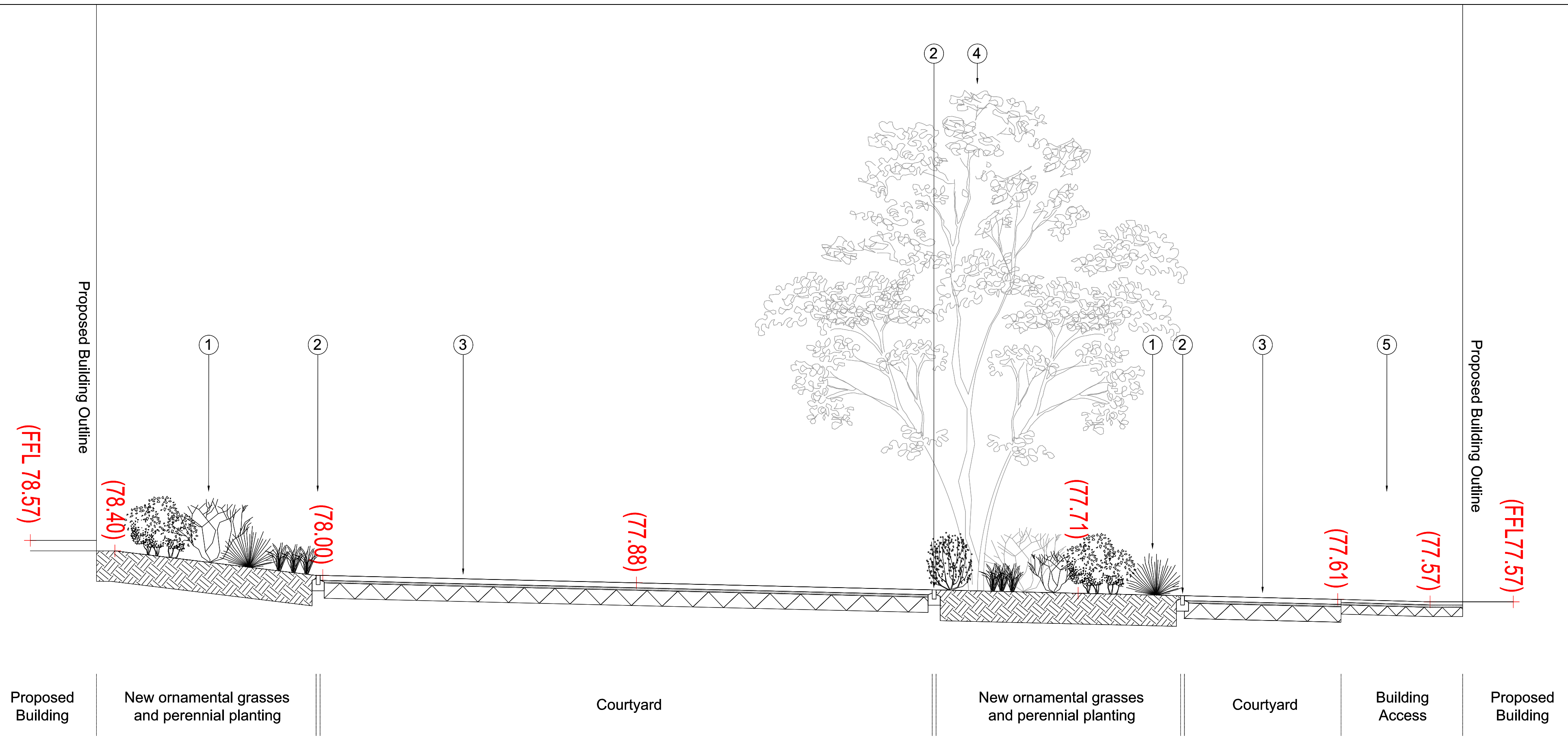


- LEGEND**
- Section C**
- Existing tree retained
 - New wildflower meadow planting to verge
 - New Clipped Beech Hedge at 1500 mm high
 - Conservation Kerb. 255 x 145 x 915 mm
Supplier: Marshalls, or similar and approved.
Col: Silver Grey, .
 - New Permeable Block Paving. Build up for vehicular traffic. Supplier: Tobermore, 200 x 80 x 100 mm, or equivalent and approved. Col: TBC. Build up to Engineer's detail and specification
 - Conservation Kerb laid flat and flush. 255 x 145 x 915 mm
Supplier: Marshalls, or equivalent & approved.
Col: Silver Grey
 - New Asphalt Concrete (AC). Build up for Vehicular Traffic to Engineers detail & specification



- Section D**
- New Ornamental Grasses and Perennial Planting
 - Conservation Pin Kerb, laid flush 63 x 150 x 915 mm
Supplier: Marshalls, or equivalent & approved.
Col: Silver Grey
 - New Paving to Courtyard.
Supplier: Marshalls 'Conservation Smooth' or equivalent & approved. Col: TBC. Build up for vehicular traffic to Engineer's detail & specification
 - Existing Tree
 - New Permeable Resin bound Shared Space. Build up for vehicular traffic.
Supplier: Sureset, Col: TBC, or equivalent and approved. Build up Engineer's detail and specification

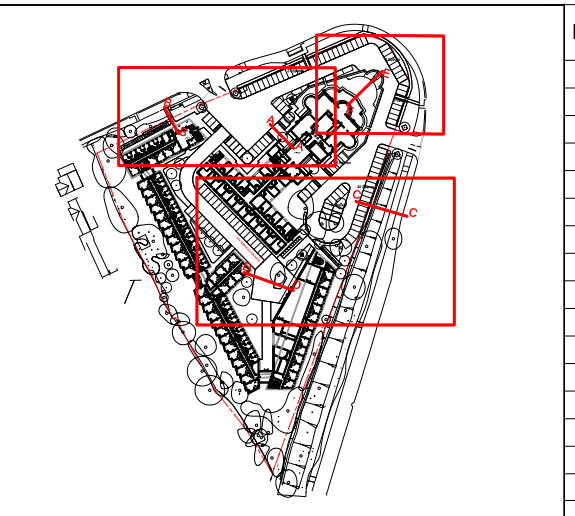
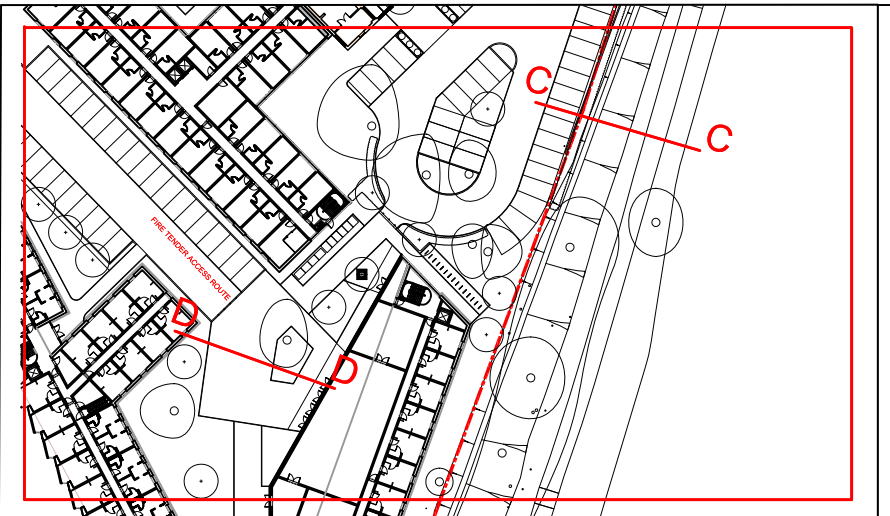
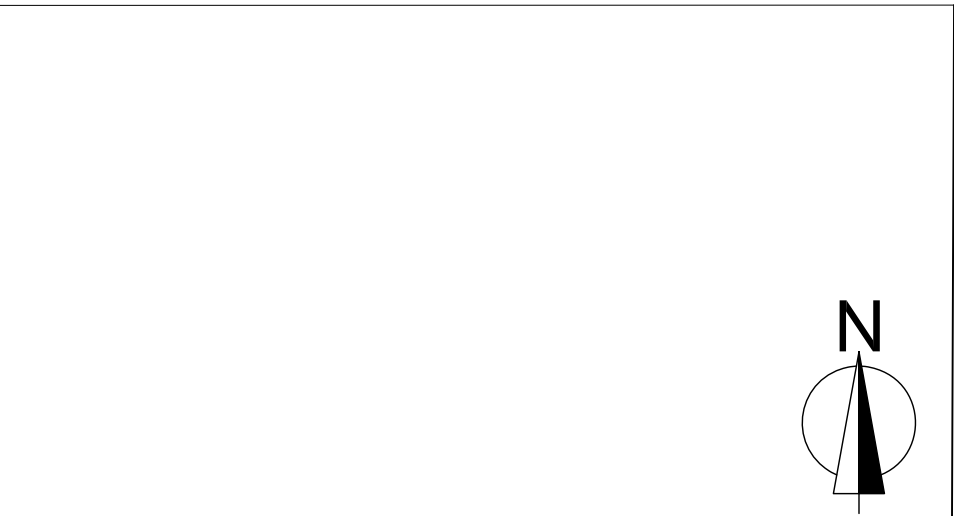
Reproduced with the permission of the controller of her Majesty's Stationary Office. © Crown Copyright - Licence No. AR100017235

GENERAL NOTES:

- ALL DIMENSIONS AND LEVELS SHALL BE CHECKED ON SITE PRIOR TO CONSTRUCTION WORK COMMENCING.
- ALL LANDSCAPE DRAWINGS TO BE READ IN CONJUNCTION WITH ALL RELEVANT ENGINEER'S AND ARCHITECT'S DRAWINGS AND SPECIFICATIONS.
- ALL DRAWINGS TO BE READ IN CONJUNCTION WITH THE LANDSCAPE SPECIFICATION.
- ANY DISCREPANCY CONCERNING THE DRAWINGS SHOULD BE REFERRED TO THE CA IMMEDIATELY.
- ALL DIMENSIONS IN MILLIMETERS UNLESS NOTED OTHERWISE.
- ALL LEVELS IN METERS.
- EXISTING SERVICE ALIGNMENTS SHALL BE CHECKED ON SITE BY THE CONTRACTOR PRIOR TO CONSTRUCTION WORK COMMENCING.

DRAWING NOTES:

- LEVELS IN RED INDICATE PROPOSED LEVELS IN BLACK INDICATE EXISTING



Rev:	Date:	Description:	Drawn:	Ch'd:
00	25/09/15	FOR PLANNING	MM	BS

Environmental Planning EIA Landscape Architecture Ecology Development Planning

THE Landmark PRACTICE

Hope Chapel House
Hope Chapel Hill
Hotwells
Bristol BS8 4ND
United Kingdom

Tel: +44 (0)117 923 0455

enquiries@thelandmarkpractice.com
www.thelandmarkpractice.com

CLIENT FUSION RESIDENTIAL		
PROJECT HOTEL & STUDENT RESIDENTIAL COMET HOTEL SITE HATFIELD		
TITLE LANDSCAPE_GENERAL_ARRANGEMENT INDICATIVE_LANDSCAPE_SECTIONS_2_OF_3		
Status: PLANNING	Drawn: MM	Checked: BS
Scale: 1:50@A1	Date: 24.09.15	Approved: BS
Drawing Number: 2821_L_GA_2_02		Rev: 00