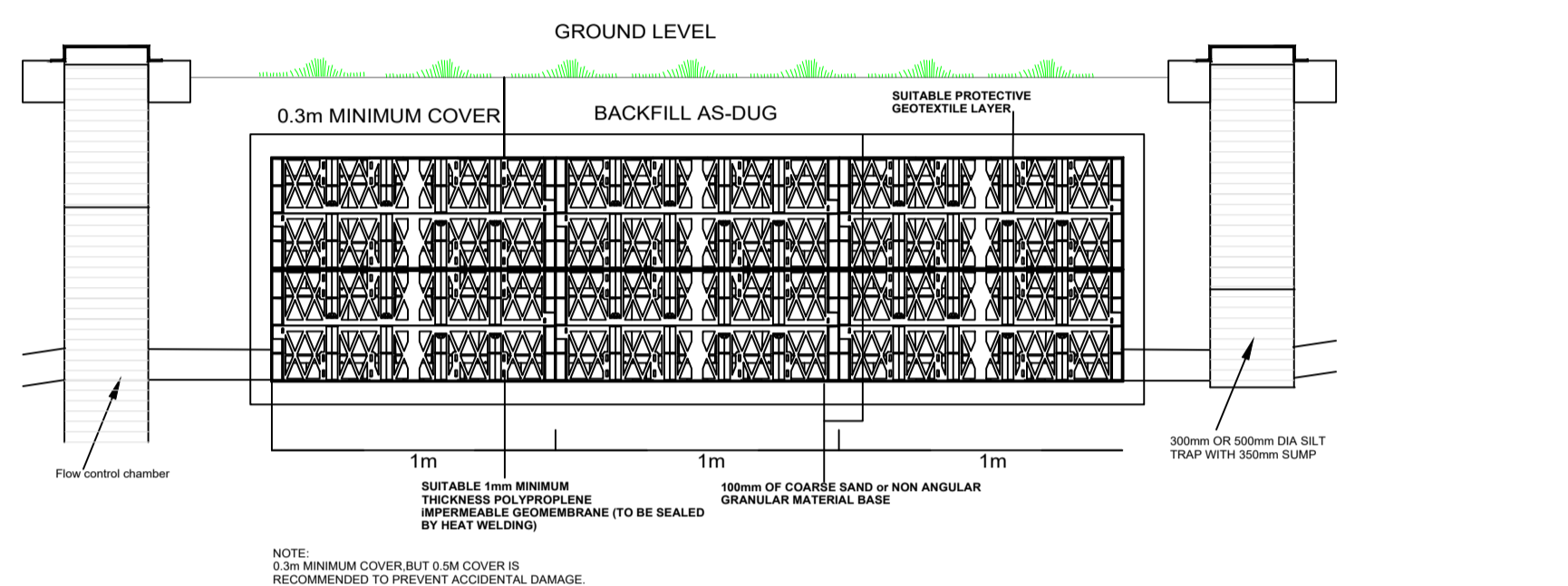
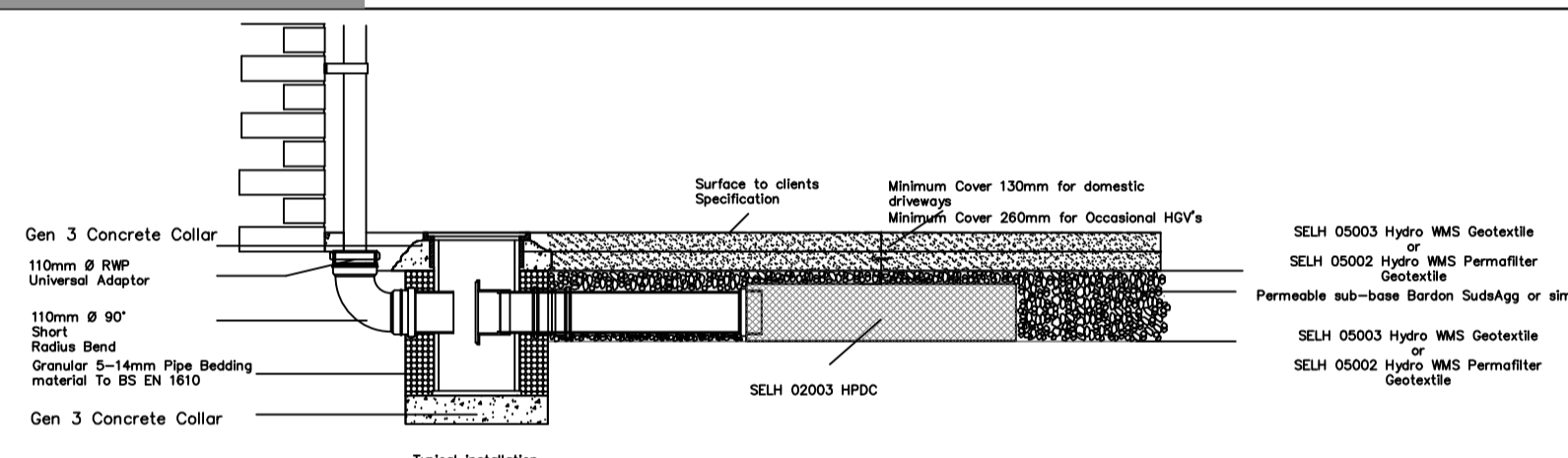


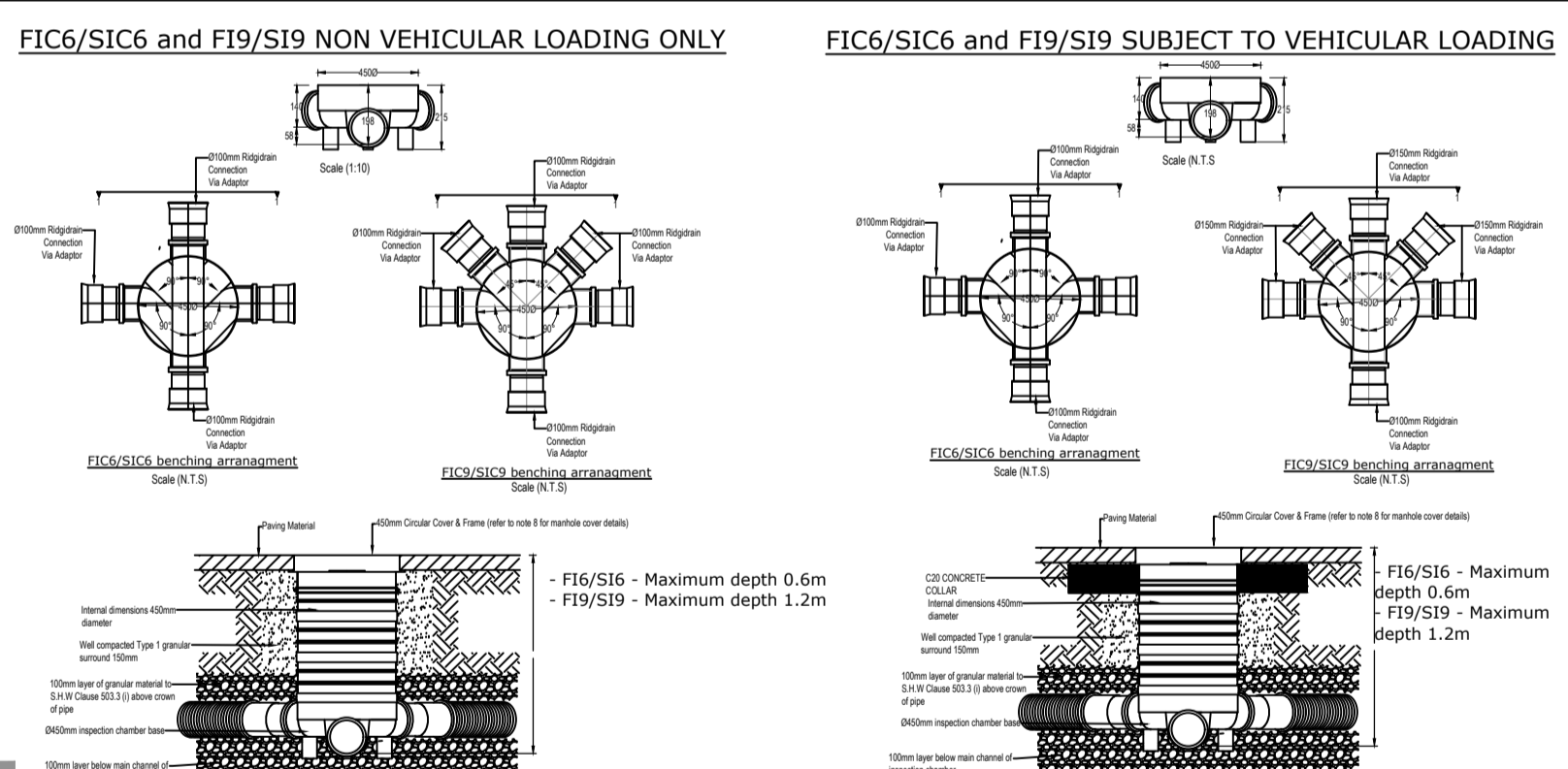
**PERMEABLE BLOCK PAVING DETAIL**  
SCALE: 1:25



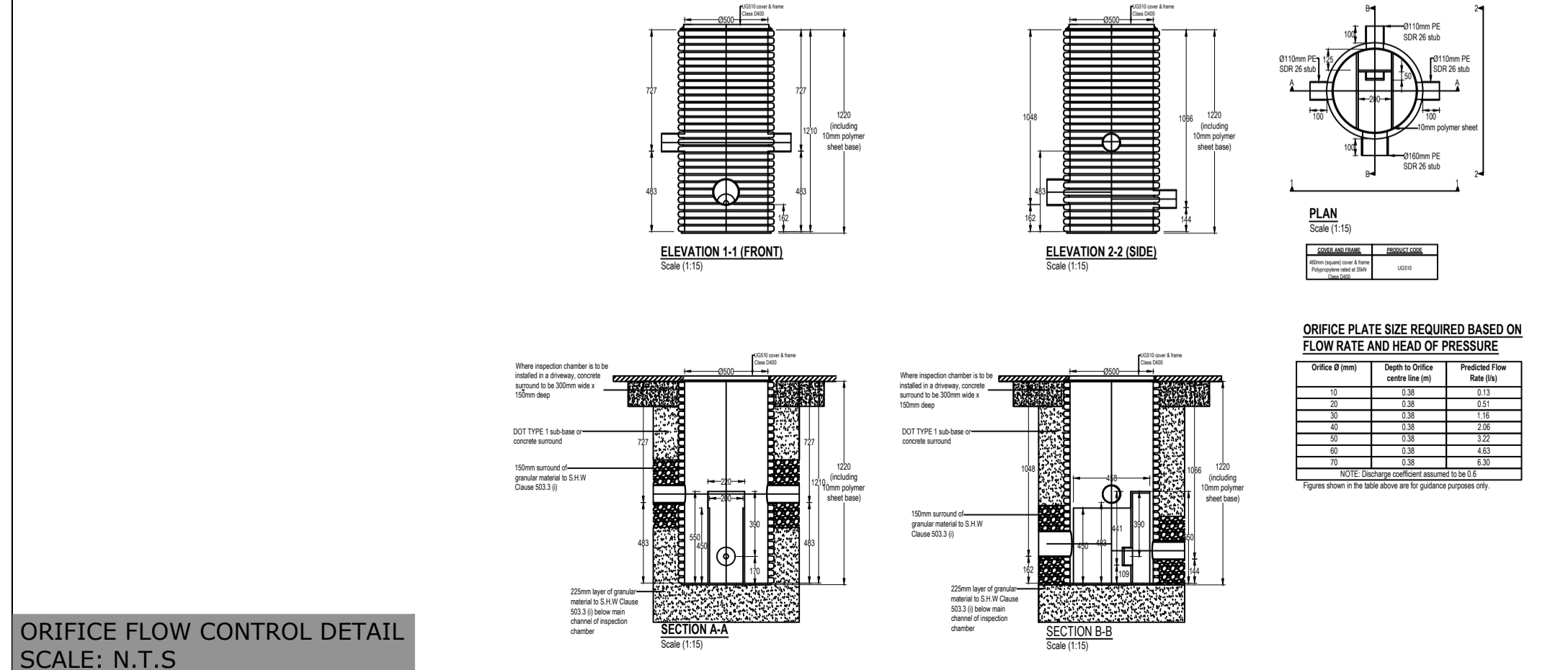
**WAVIN CELLULAR STORAGE SYSTEM DETAIL**  
SCALE: 1:25



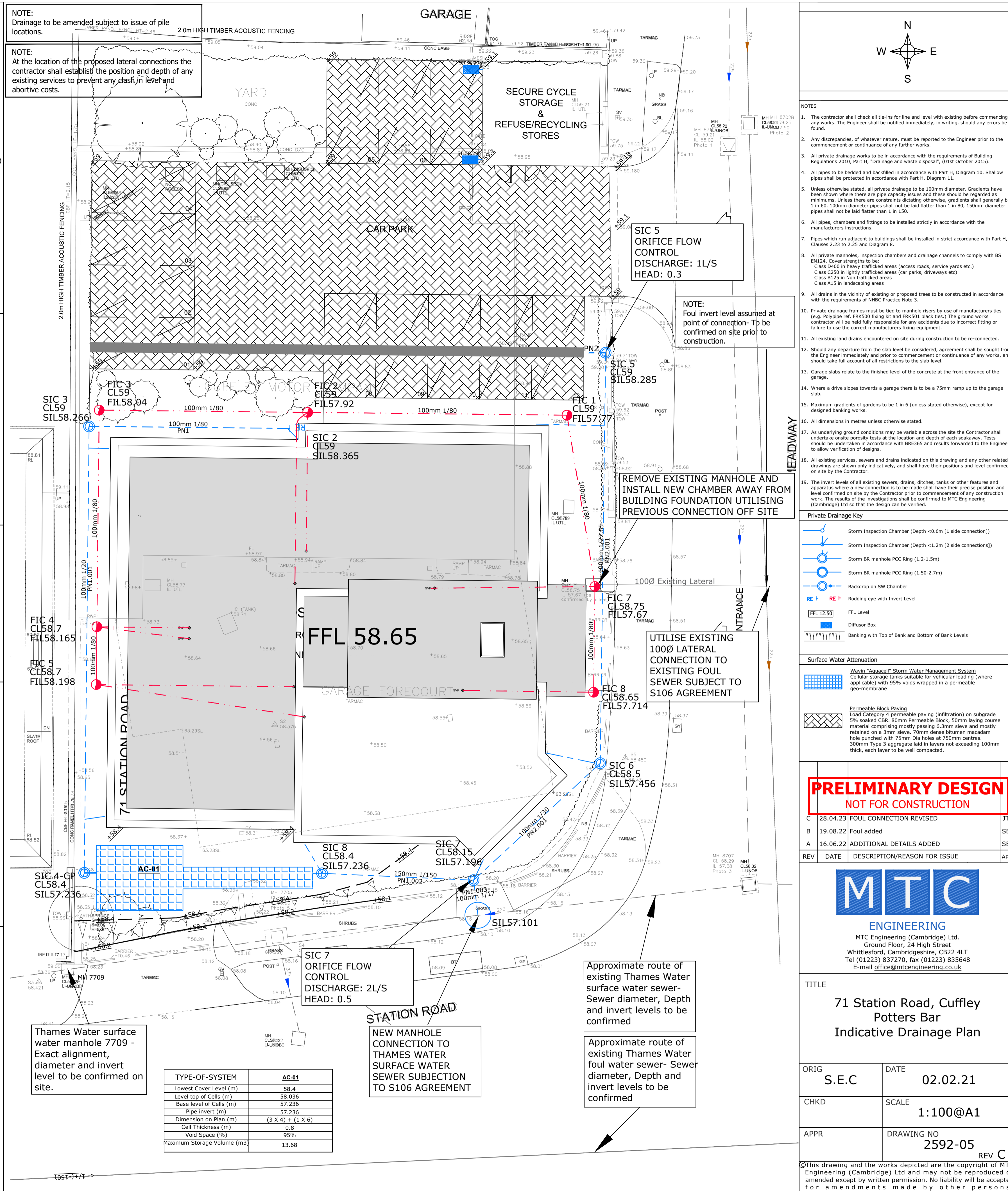
**SKELI DIFFUSER BOX DETAIL**  
SCALE: N.T.S



**INSPECTION CHAMBER DETAIL**  
SCALE: N.T.S



**ORIFICE FLOW CONTROL DETAIL**  
SCALE: N.T.S



**PRELIMINARY DESIGN**  
NOT FOR CONSTRUCTION

REV	DATE	DESCRIPTION/REASON FOR ISSUE	APPR
C	28.04.23	FOUL CONNECTION REVISED	JTC
B	19.08.22	Foul added	SEC
A	16.06.22	ADDITIONAL DETAILS ADDED	SEC

**MTC ENGINEERING**  
MTC Engineering (Cambridge) Ltd.  
Ground Floor, 24 High Street  
Whittlesford, Cambridgeshire, CB22 4LT  
Tel (01223) 837270, fax (01223) 835648  
E-mail office@mtcengineering.co.uk

**TITLE**  
71 Station Road, Cuffley  
Potters Bar  
Indicative Drainage Plan

ORIG	DATE
S.E.C	02.02.21

CHKD	SCALE
	1:100@A1

APPR	DRAWING NO	REV
	2592-05	C

© This drawing and the works depicted are the copyright of MTC Engineering (Cambridge) Ltd and may not be reproduced or amended except by written permission. No liability will be accepted for amendments made by other persons.