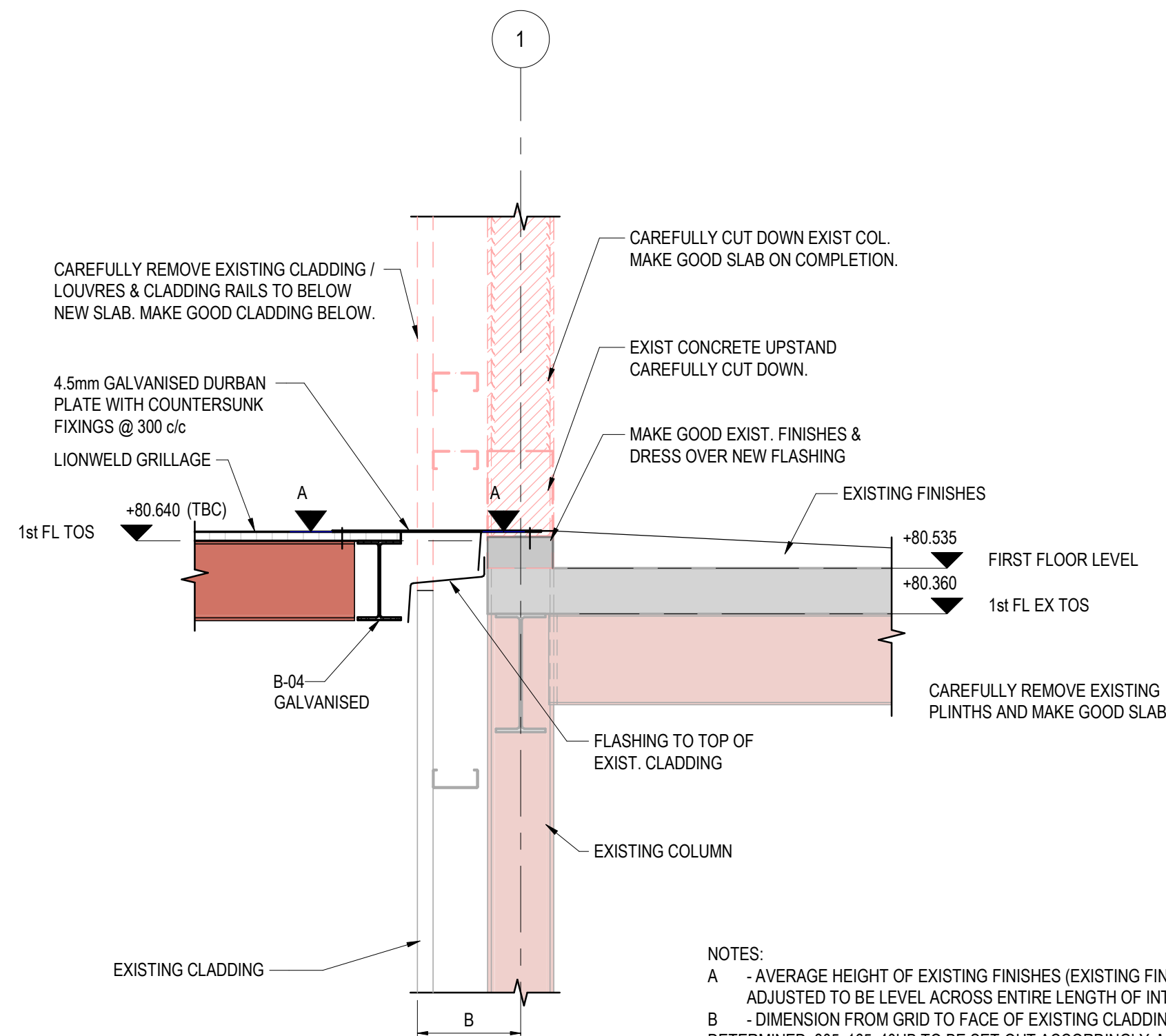
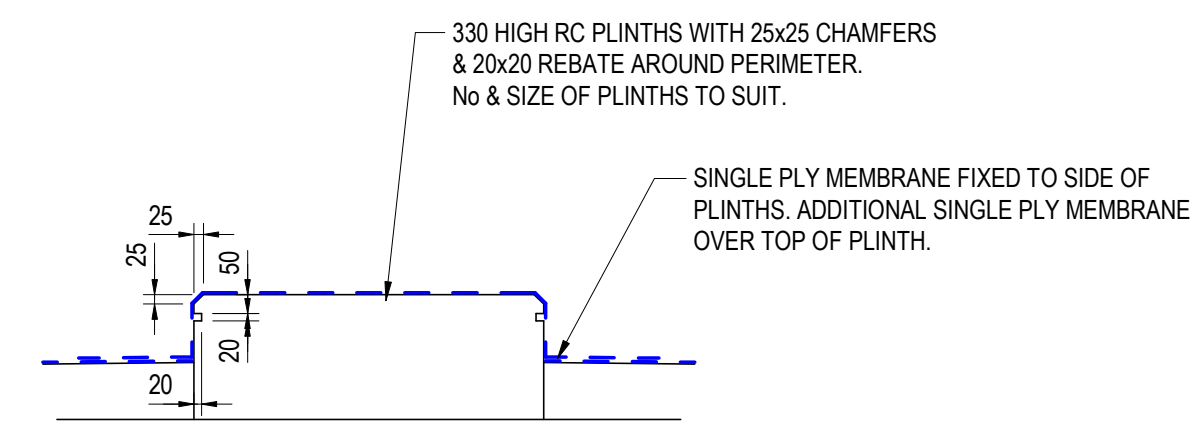


2700 / 1 DETAIL
TYPICAL PERIMETER DETAIL
SCALE 1 : 20

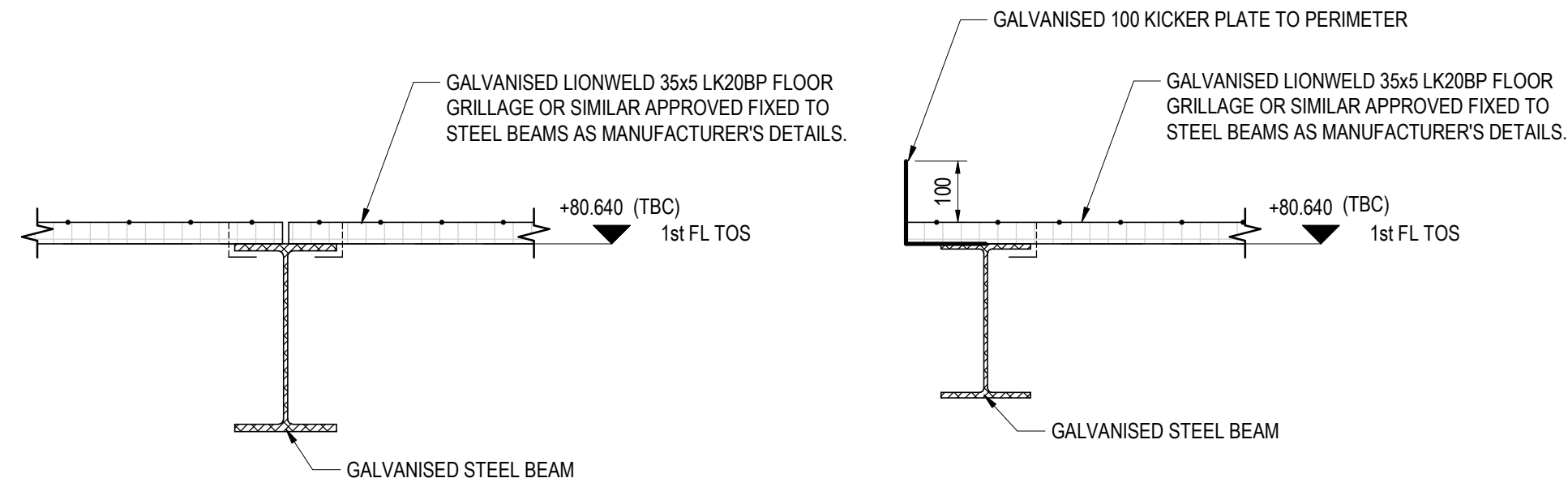


2700 / 2 DETAIL
JUNCTION WITH EXISTING
SCALE 1 : 20

NOTES:
A - AVERAGE HEIGHT OF EXISTING FINISHES (EXISTING FINISHES ADJUSTED TO BE LEVEL ACROSS ENTIRE LENGTH OF INTERFACE).
B - DIMENSION FROM GRID TO FACE OF EXISTING CLADDING TO BE DETERMINED. 305x165x40UB TO BE SET-OUT ACCORDINGLY. MAIN BEAMS (305x165x40/305x102x33 UBs) TO BE CONNECTED TO EXISTING COLUMNS).

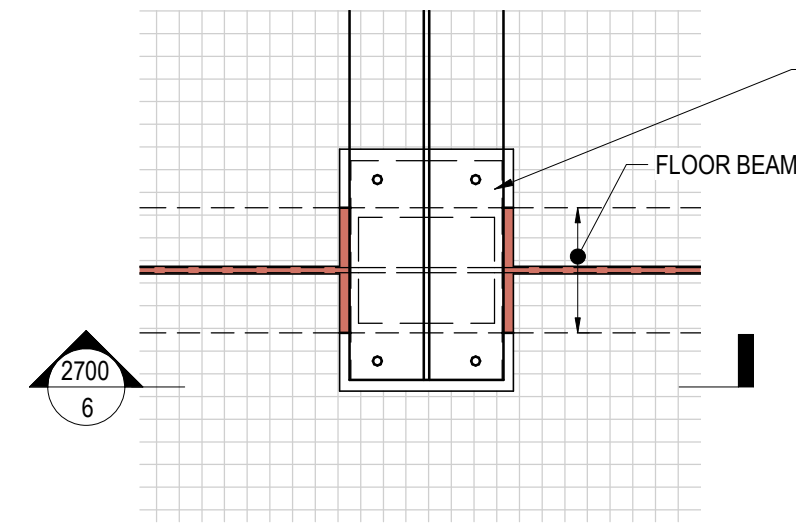


2700 / 7 DETAIL
TYPICAL PLINTH
SCALE 1 : 20

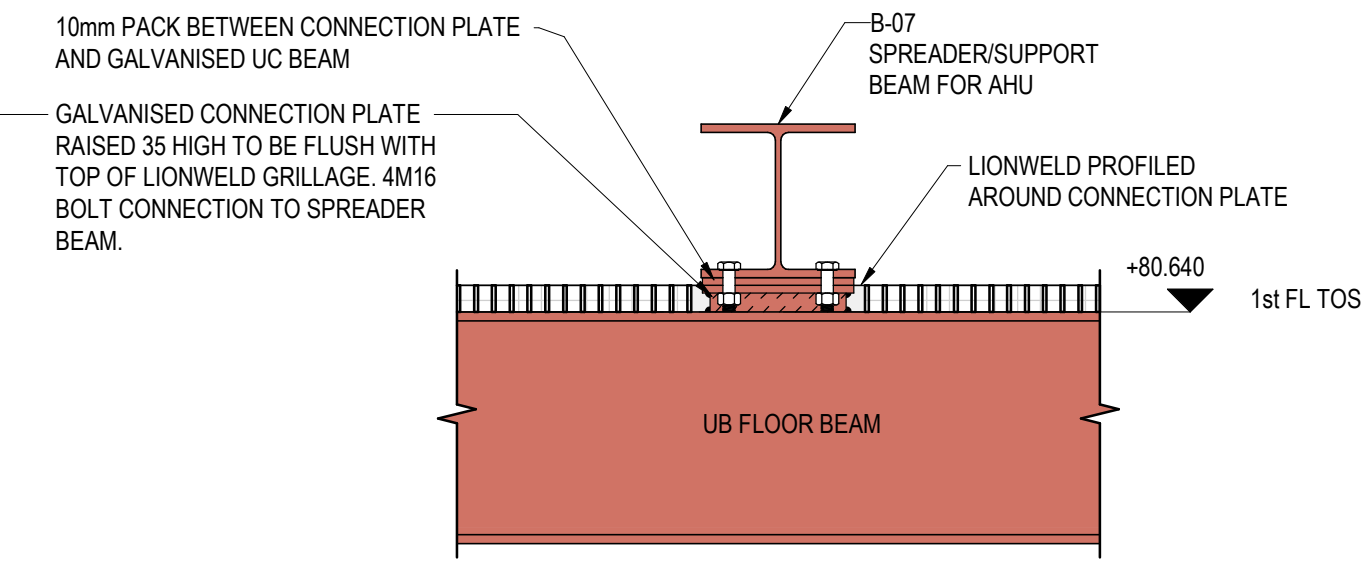


2700 / 3 TYPICAL SECTION
SCALE 1 : 10

2700 / 4 TYPICAL SECTION
SCALE 1 : 10



2700 / 5 PLAN
AHU SUPPORT BEAM CONNECTION
SCALE 1 : 10



2700 / 6 TYPICAL SECTION
AHU SUPPORT BEAM CONNECTION
SCALE 1 : 10

STEEL COLUMN SCHEDULE					
TYPE MARK	SIZE	Fx	Fy	Fz	REMARKS
C-01	UC254x254x73	10.00 kN	25.00 kN	400.00 kN	
C-02	UC152x152x23	5.00 kN	5.00 kN	5.00 kN	

STEEL BEAM SCHEDULE					
TYPE MARK	SIZE	Fx	Fy	Fz	REMARKS
B-01	UB254x102x22	0.00 kN	5.00 kN	75.00 kN	
B-02	UB254x146x31	0.00 kN	5.00 kN	75.00 kN	
B-03	UB305x102x33	0.00 kN	5.00 kN	125.00 kN	
B-04	UB305x165x40	0.00 kN	5.00 kN	125.00 kN	
B-05	UB305x165x46	0.00 kN	5.00 kN	200.00 kN	
B-06	UB305x165x54	0.00 kN	5.00 kN	125.00 kN	
B-07	UC203x203x46	5.00 kN	5.00 kN	75.00 kN	AHU SPREADER/SUPPORT BEAM
B-08	UC152x152x37	0.00 kN	5.00 kN	20.00 kN	
B-09	PFC230x75x26	0.00 kN	5.00 kN	5.00 kN	

NOTES

- 1.0 GENERAL
- 1.1 THE COPYRIGHT OF THIS DRAWING IS VESTED IN VERTEX ENGINEERS AND IT MAY NOT BE REPRODUCED IN WHOLE OR PART, OR USED FOR THE MANUFACTURE OF ANY ARTICLE WITHOUT THE EXPRESS PERMISSION OF THE COPYRIGHT HOLDERS.
 - 1.2 WORK TO FIGURED DIMENSIONS ONLY.
 - 1.3 THIS DRAWING IS TO BE READ IN CONJUNCTION WITH ALL RELEVANT ARCHITECTS', SERVICE ENGINEERS' AND VERTEX ENGINEERS' DRAWINGS AND SPECIFICATIONS.
 - 1.4 ALL DIMENSIONS ARE IN MILLIMETRES UNLESS OTHERWISE NOTED.
- 2.0 STRUCTURAL STEELWORK
- 2.1 EXECUTION OF ALL STEEL STRUCTURES MUST BE IN ACCORDANCE WITH BS EN 1090-2 EXECUTION CLASS 2.
 - 2.2 ALL STEELWORK TO BE GRADE S355 AND GALVANISED U.N.O.
 - 2.3 CONNECTION DESIGN IS THE RESPONSIBILITY OF THE CONTRACTOR. THE STEEL FABRICATOR IS TO COMPLETE THE DESIGN OF THE CONNECTIONS INCLUDING NEW/EXISTING CONNECTIONS TO SAFELY TRANSFER A MINIMUM SHEAR FACTORED LOAD AS NOTED IN SCHEDULE.
 - 2.4 AS A MINIMUM ALL CONNECTIONS ARE TO BE 2No. M16/8.8 BOLTS WITH 10mm THICK END PLATES.
 - 2.5 ALL WELDS TO BE MINIMUM FULL PROFILE 6mm CONTINUOUS FILLET WELD (C.F.W.) UNLESS NOTED OTHERWISE.
 - 2.6 IT IS THE RESPONSIBILITY OF THE CONTRACTOR TO TAKE ALL NECESSARY SITE DIMENSIONS FOR FABRICATION PURPOSES.
- 3.0 CONCRETE
- 3.1 CONCRETE GRADES:
FOUNDATIONS C30/37
GROUND BEARING SLAB C30/37
 - 3.2 CASTING OF CONCRETE REFER TO SPEC E10.
- 4.0 FLOOR
- 4.1 GALVANISED LIONWELD 35x5 LK20BP OR SIMILAR FIXED IN ACCORDANCE WITH MANUFACTURER'S REQUIREMENTS.
 - 4.2 FLOOR DESIGNED FOR IMPOSED LOAD OF 5.0 kN/m².
- 5.0 DRAWING SPECIFIC NOTES
- 5.1 PROVIDE TEMPORARY WORKS TO MAINTAIN WEATHER TIGHTNESS OF EXISTING BUILDING DURING THE WORKS.

Rev	Description	By	App. By	Date
P3	REVISED TO SUIT FLOOR GRILLAGE DESIGN	AB	AJH	05/02/2024
P2	CHANGES TO SUIT SERVICES SITE SURVEY.	AB	AJH	15/01/2024
P1	PRELIMINARY	AB	AJH	24/11/2023

Client	JAGUAR
Architect	-

Structural and Civil Engineers
Project Managers
Principal Designers
Construction Consultants
Party Wall Surveyors

VERTEX ENGINEERS

4th Floor | 1 Onslow Street | London | EC3N 8AS
Tel: 020 7516 5744 | london@vertexeng.co.uk | www.vertexeng.co.uk

Project Title	EISAI
Drawing Title	CHILLER REPLACEMENT SUPERSTRUCTURE DETAILS

Drawing Status	PRELIMINARY
----------------	-------------

Drawn By	Date	Checked By	Date	Scale @ A1	Project No.
AB	NOV-23	GA	NOV-23	As indicated	25147

Dwg No.	Revision	Suitability
25147-VTX-XX-ZZ-DR-S-2700	P3	S3