





NOTES

1. THIS DRAWING IS TO BE READ IN CONJUNCTION WITH ALL RELEVANT ARCHITECTS, ENGINEERS AND SPECIALIST DRAWINGS AND SPECIFICATIONS
2. DO NOT SCALE FROM THIS DRAWING IN EITHER PAPER OR DIGITAL FORM. USE WRITTEN DIMENSIONS ONLY.
3. DRAWING BASED ON TOPOGRAPHIC SURVEY BY PLOWMAN CRAVEN, REF. 30279T-01, DATED 18/12/2013.

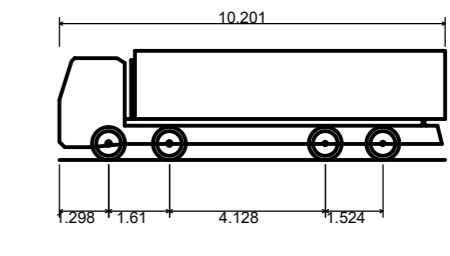
LEGEND

-  SITE BOUNDARY
-  MAIN DEMOLITION WORKS
-  PUBLIC VEHICLE PARKING
-  SITE VEHICLE PARKING

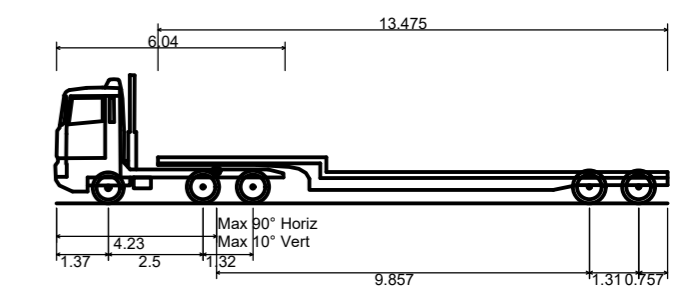


VEHICLE BODY ENVELOPE
 VEHICLE WHEEL SWEEP PATH
 VEHICLE CHASSIS (SHOWN AT START & END OF PATH AND CHANGE OF DIRECTION)

VEHICLE PROFILES

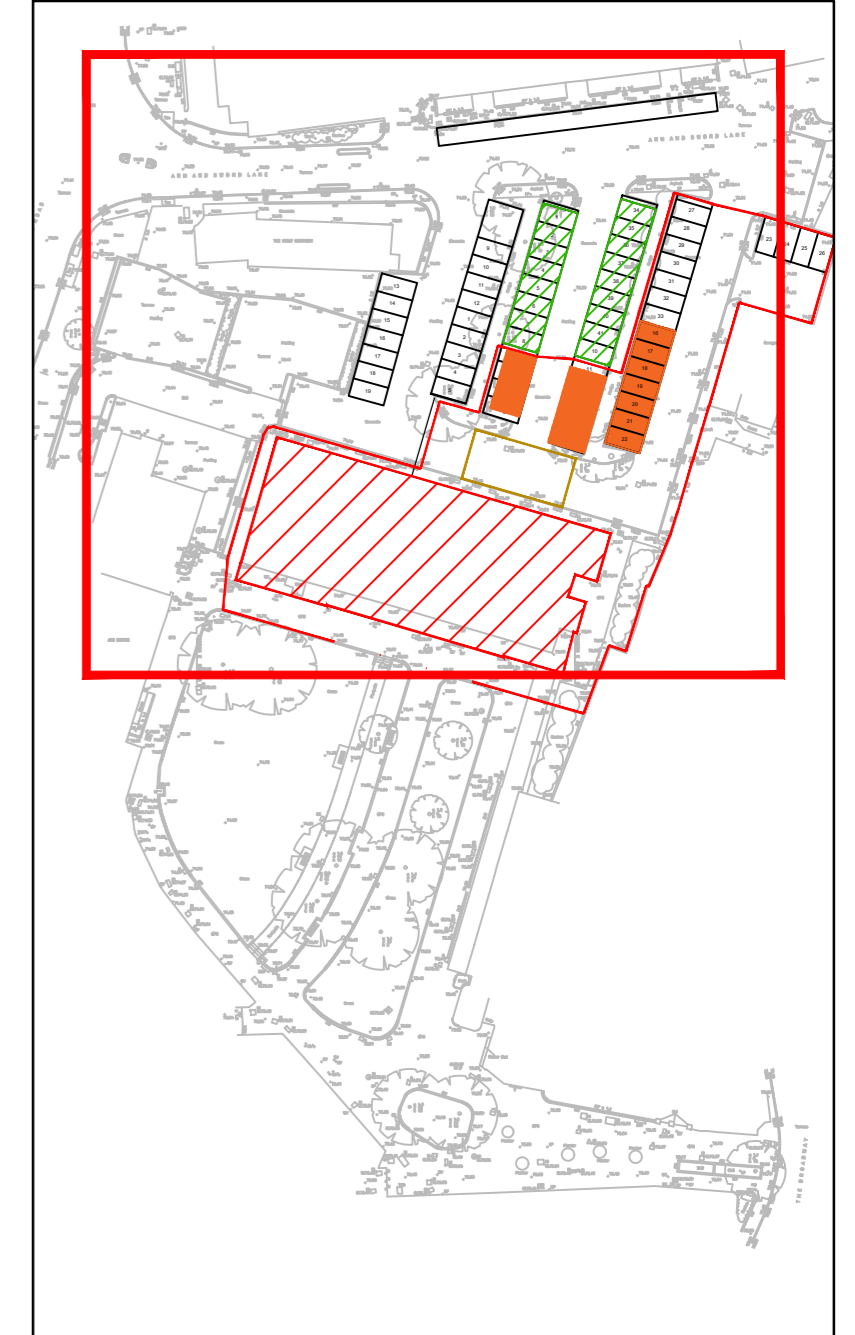


Large Tipper
 Overall Length 10.201m
 Overall Width 2.495m
 Overall Body Height 2.800m
 Min Body Ground Clearance 0.341m
 Track Width 2.471m
 Lock to lock time 6.00s
 Kerb to Kerb Turning Radius 11.550m

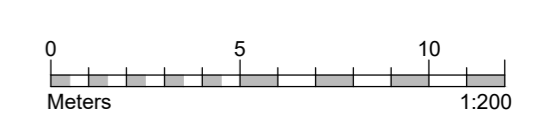


Low Loader
 Overall Length 16.154m
 Overall Width 2.520m
 Overall Body Height 3.383m
 Min Body Ground Clearance 0.318m
 Max Track Width 2.500m
 Lock to lock time 6.00s
 Kerb to Kerb Turning Radius 6.990m

KEY PLAN - 1:1000m



NOT FOR CONSTRUCTION



P03 14.08.23	REVISED FOR HCC COMMENTS	JT	AM
P02 03.07.23	ISSUED FOR PLANNING	JT	AM
P01 27.06.23	STAGE 3 ISSUE	JT	AM
Rev Date	Description	Drawn	Check

conisbee Consulting Structural Engineers
 Consulting Civil Engineers
 London • Cambridge • Norwich
 1-5 Offord St London N1 1DH
 Telephone 020 7700 6666
 www.conisbee.co.uk

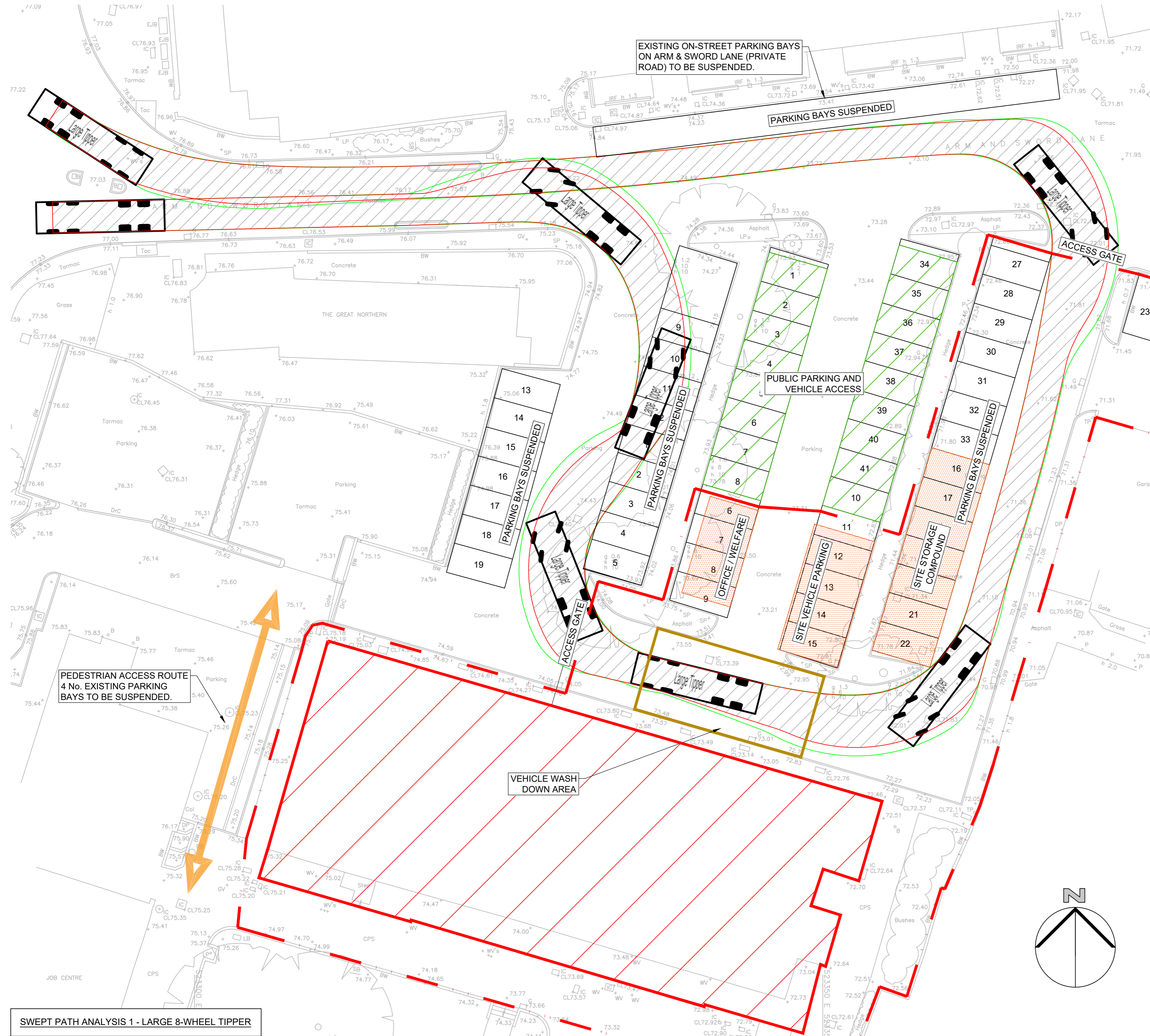
Drawing Status
S3 - SUITABLE FOR REVIEW & COMMENT

Project
**SALISBURY SQUARE
 OLD HATFIELD**

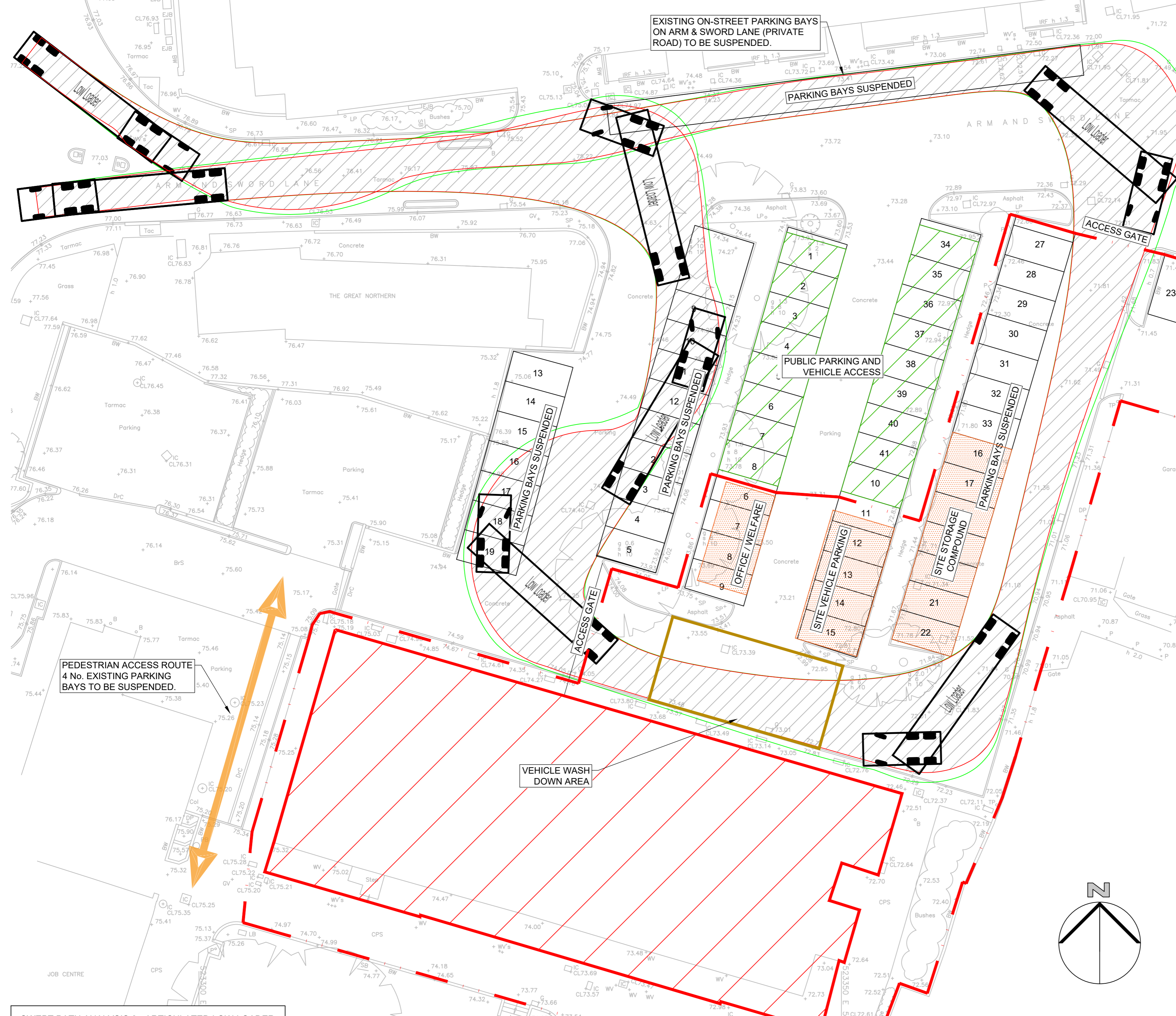
Title
**VEHICLE TRACKING
 CONSTRUCTION PHASE**

Drawing No
221111-CON-XX-00-DR-C-6000

Date JUN 2023
 Scale 1:200@A1
 Drawn JT
 Engineer AM
 Project No **221111**
 Revision **P03**



SWEPT PATH ANALYSIS 1 - LARGE 8-WHEEL TIPPER



SWEPT PATH ANALYSIS 2 - ARTICULATED LOW-LOADER