

## Condition 09 (Safe & suitable access)

### **CONDITION**

Development must not commence (excluding works of demolition) until detailed design plans have been submitted to and approved in writing by the local planning authority to illustrate the proposed roads, footways and cycleways. All construction works shall be carried out in accordance with the approved plans.

### **RESPONSE**

To ensure safe and suitable access we have illustrated the proposed road, footways, and cycleways on our landscaping plan.

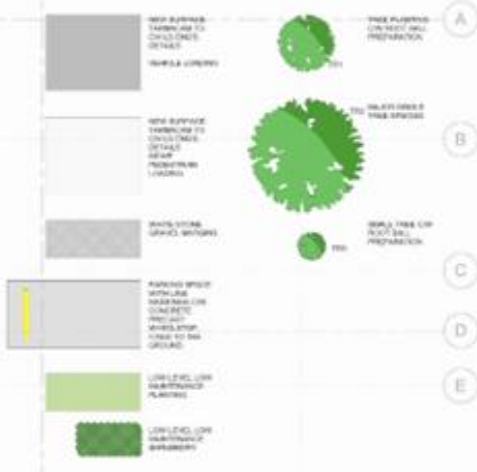
Attached drawing under appendices demonstrate that condition has been complied with.

Drawing	Title	Rev	Date
HAT-RDB-XX-GN-SC-A-0017	Landscaping plan	R01	12 August 2022

### **REASON**

To ensure safe and suitable access in accordance with Policy SADM 2 of the Welwyn Hatfield Borough Council Draft Local Plan Proposed Submission August 2016, and the National Planning Policy Framework.

# Landscaping plan



Legend:  
 Proposed roads  
 Footways  
 Cycleways

Do not use this drawing, parts or alterations to the plan to commence. The drawing is to be used in conjunction with all relevant documents and shall be kept in accordance with the relevant requirements of the Building Act 2004 and the Building Regulations 2006.

NOTE:  
 This drawing is to be used in conjunction with:  
 - NAT-RDB-XX-GN-A-001 Proposed Ground Floor Plan  
 - NAT-RDB-XX-GN-A-002 Proposed First Floor Plan  
 - NAT-RDB-XX-GN-A-003 Proposed Second Floor Plan  
 - NAT-RDB-XX-GN-A-004 Proposed Third Floor Plan  
 - NAT-RDB-XX-GN-A-005 Proposed Fourth Floor Plan  
 - NAT-RDB-XX-GN-A-006 Proposed Fifth Floor Plan  
 - NAT-RDB-XX-GN-A-007 Proposed Sixth Floor Plan  
 - NAT-RDB-XX-GN-A-008 Proposed Roof Plan  
 - NAT-RDB-XX-GN-A-009 External/Entrance Street 01  
 - NAT-RDB-XX-GN-A-010 External/Entrance Street 02  
 - NAT-RDB-XX-GN-A-011 External/Entrance Street 03  
 - NAT-RDB-XX-GN-A-012 External/Entrance Street 04  
 - NAT-RDB-XX-GN-A-013 External/Entrance Street 05  
 - NAT-RDB-XX-GN-A-014 External/Entrance Street 06  
 - NAT-RDB-XX-GN-A-015 External/Entrance Street 07  
 - NAT-RDB-XX-GN-A-016 External/Entrance Street 08  
 - NAT-RDB-XX-GN-A-017 External/Entrance Street 09  
 - NAT-RDB-XX-GN-A-018 External/Entrance Street 10  
 - NAT-RDB-XX-GN-A-019 External/Entrance Street 11  
 - NAT-RDB-XX-GN-A-020 External/Entrance Street 12  
 - NAT-RDB-XX-GN-A-021 External/Entrance Street 13



Project Status	Issue 1
Client	
Project Name & Address WILKINGHAMFIELD COMET WAY, HATFIELD, AL9 5VY	
Building Type RESIDENTIAL DEVELOPMENT	
Drawing Title LANDSCAPING PLAN	
Created By	JAB Date 25.07.2022
Checked By	NJB Date 25.07.2022
Approved By	RJV Date 25.07.2022
Drawing Number NAT-RDB-XX-GN-SC-A-0017	
Sheet No.	01 of 01
Scale	Orig. Sheet Size/Rev. 0-A5 R01

FOR APPROVAL