
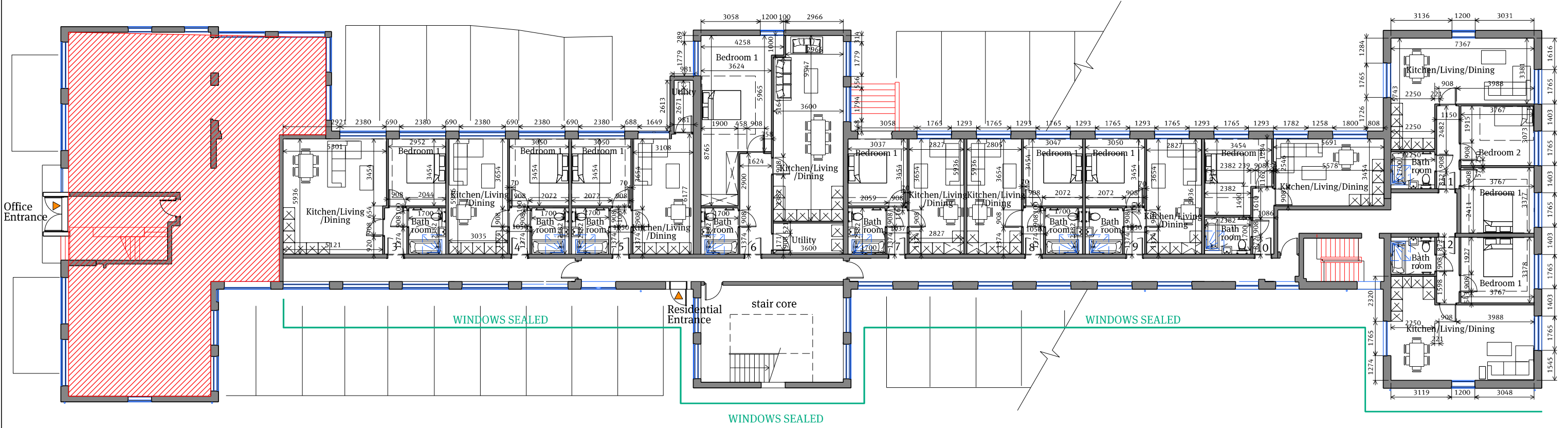
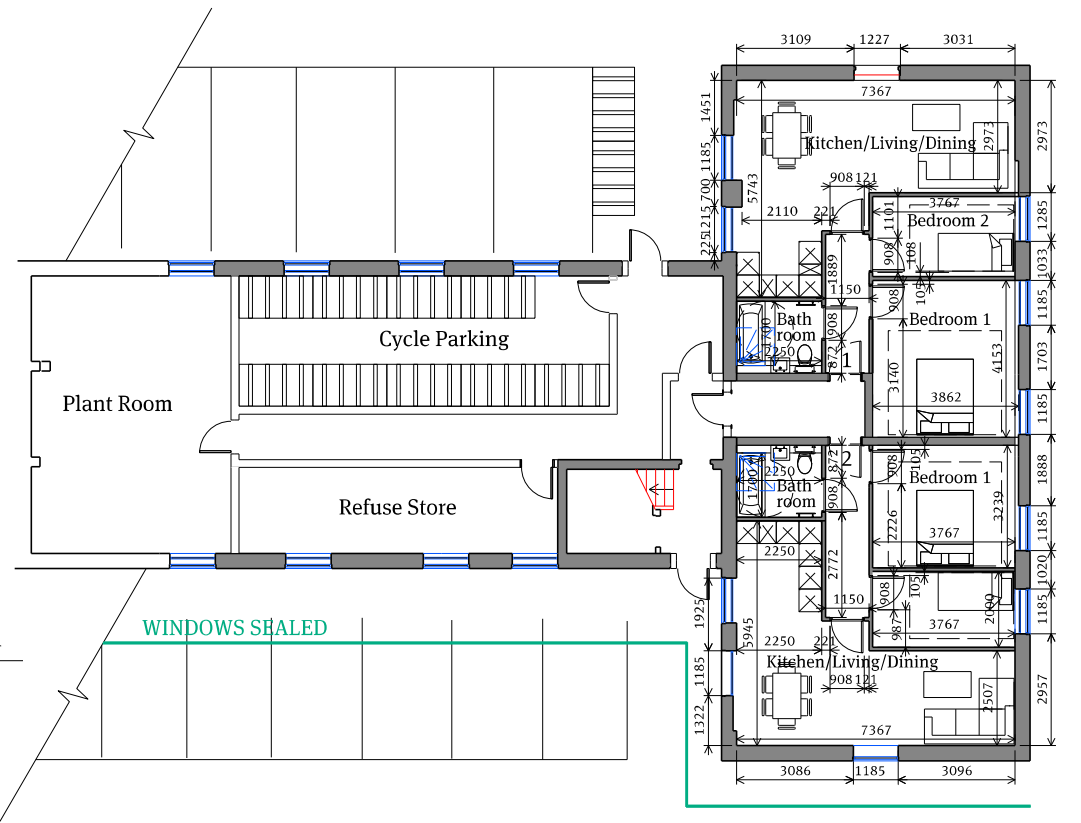


Legend

Retained office use 

01 Proposed Lower Ground Floor Plan
1:200 @A3



02 Proposed Ground and Typical Floor Plan
1:200 @A3

PAPA Architects Ltd.
222 Archway Road, Highgate,
London N6 5AX
Phone. +44(0)20 8348 8411
Fax. +44 (0)20 8348 7411
www.papaarchitects.co.uk

Client

Address
Everest House, Sopers Road,
Cuffley, Potters Bar, EN6 4SG

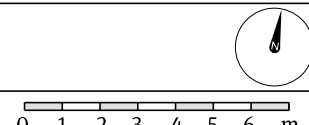
Drawing title
Proposed Ground
and Lower Ground floor Plan

Project No./Date
2011 April 20

Scale
1:200@A3

Rev	Date	Reason For Issue	Chk
P01	17.08.20	Revised Drawing	AP

Drawing No. 00 201
Current Rev P01



Notes
All dimensions must be checked and Papa Architects are to be informed of any discrepancies prior to construction. Any DWG's issued by PAPA architects are to be read in conjunction with the associated PDF versions. This drawing and any of the details therein remain the copyright of Papa Architects Ltd. All drawings prepared by Papa Architects are not to be used for any submissions, area schedule calculations or used by any other Persons or Companies other than Papa Architects Ltd unless written consent has been given by Papa Architects Ltd.