

Do not scale this drawing or associated computer digital data, and use figured dimensions only. All dimensions are in millimetres and levels in metres unless noted otherwise. All dimensions should be checked on site prior to work commencing. Any discrepancies or items where dimensions cannot be determined should be reported to KSS. Revisions should on drawing refer to changes against previous revision.

REVISIONS			
REV	DATE	DESCRIPTION	DRWN / CHKD
P1	17.05.19	PLANNING ISSUE	MVB / PY

REVISION NOTES

GENERAL NOTES AND LEGEND
DRAWING TO BE READ IN CONJUNCTION WITH LATEST REVISIONS OF THE FOLLOWING DRAWINGS AND DOCUMENTS:

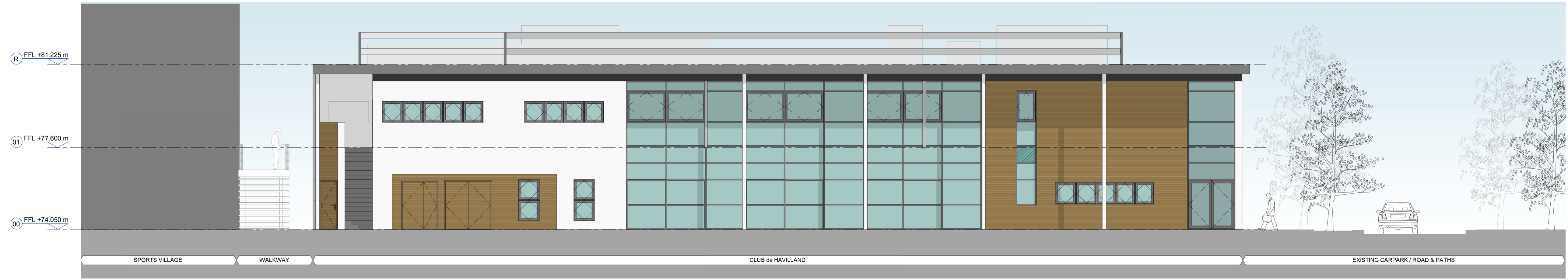
- KSS - 90 SERIES - PLANNING LOCATION & SITE PLANS
- KSS - 91 SERIES - PLANNING PLANS
- KSS - 92 SERIES - PLANNING SECTIONS
- KSS - 93 SERIES - PLANNING ELEVATIONS
- KSS - 94 SERIES - PLANNING DEMOLITION PLANS
- KSS - 95 SERIES - PLANNING VISUALS & DIAGRAMS

KSS BUILDING SPECIFICATIONS
STRUCTURAL ENGINEERS DRAWINGS AND SPECIFICATION
SERVICES ENGINEERS DRAWINGS AND SPECIFICATION

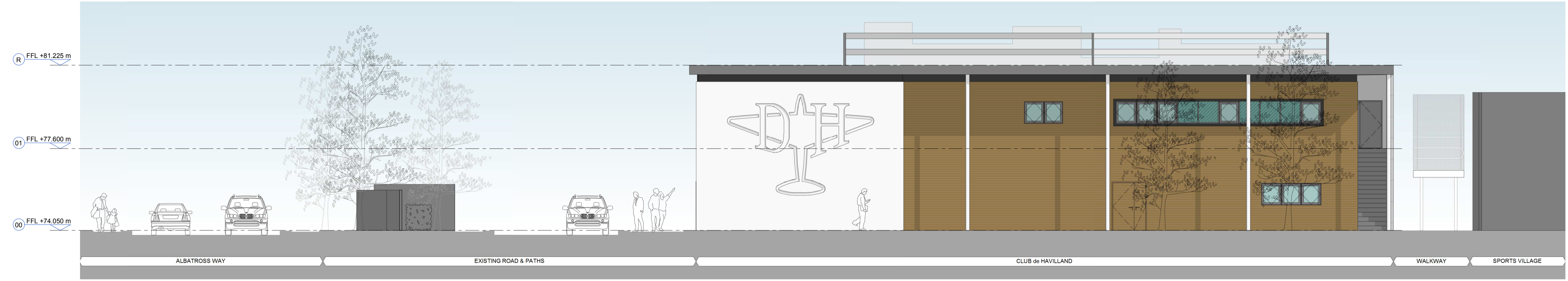
- MATERIALS**
- (A) INSULATED RENDER SYSTEM
 - (B) HORIZONTAL TIMBER CLADDING
 - (C) METAL COMPOSITE PANEL
 - (D) GLAZING WITH ALUMINIUM FRAME

MATERIAL EXISTING CONDITION

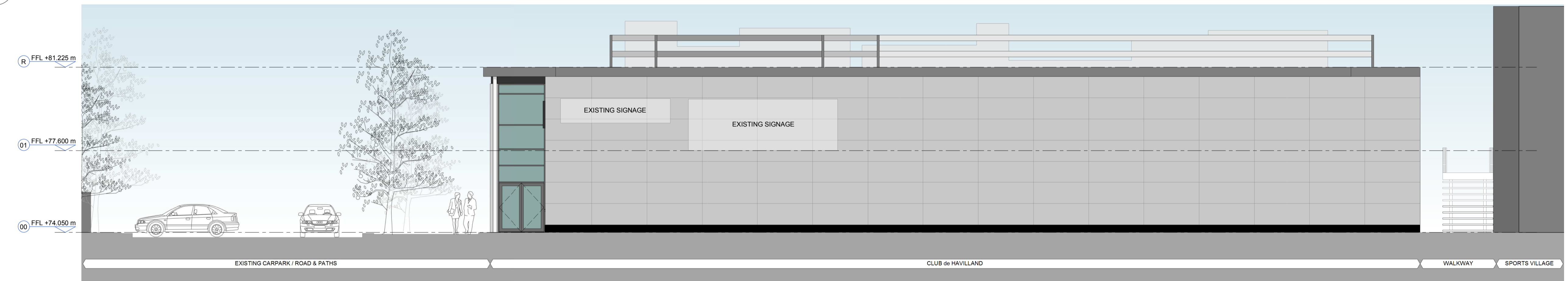
- INSULATED RENDER SYSTEM
- HORIZONTAL TIMBER CLADDING
- METAL COMPOSITE PANELS



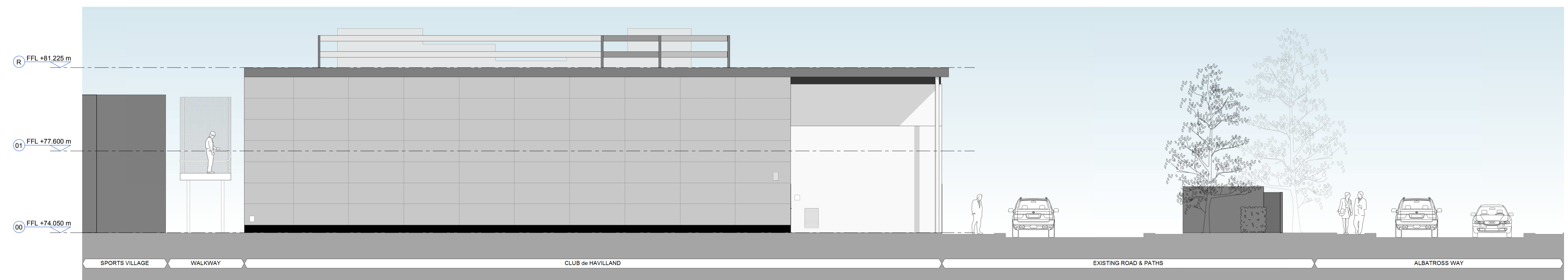
1 ELEVATION
WEST ELEVATION
1 : 100



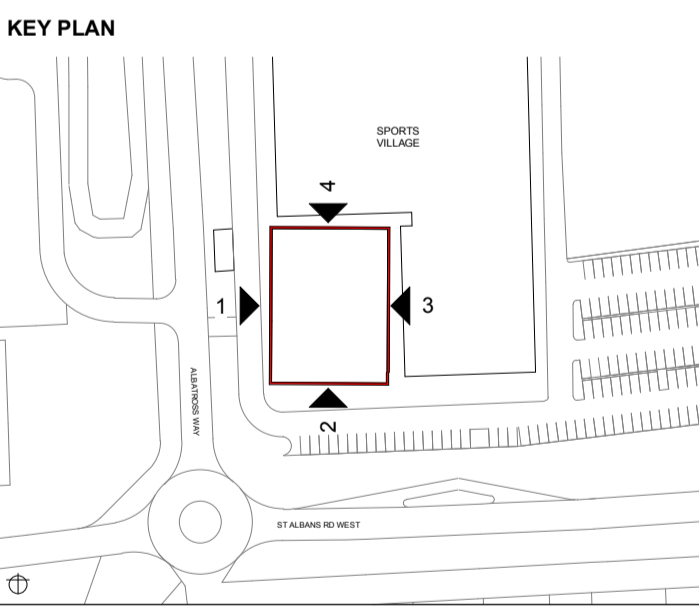
2 ELEVATION
SOUTH ELEVATION
1 : 100



3 ELEVATION
EAST ELEVATION
1 : 100



4 ELEVATION
NORTH ELEVATION
1 : 100



KSS London 1 James Street London W1U 1DR
Kent 7 Blighs Walk Sevenoaks TN13 1DB
KSS GROUP.COM T+44(0)20 7907 2222

CLIENT
WILLMOTT DIXON CONSTRUCTION

PROJECT
UNIVERSITY OF HERTFORDSHIRE

DRAWING TITLE
**SPORTS SCIENCE BUILDING
EXISTING ELEVATIONS**

DRAWING DATA & REFERENCE

Scale	Sheet Format	Drawn By	Date Drawn
1 : 100	A1	TF	24.04.19
File Ref	Checked By	Date Checked	
19861-KSS-DH-ZZ-M3-A-0001	PY	17.05.19	
Status	Submittal	Revision	
FOR PLANNING	S2	P1	

Project Ref. Originator Vol. Level Type Role Series & Sequence
19861-KSS-DH-ZZ-DR-A-9301

