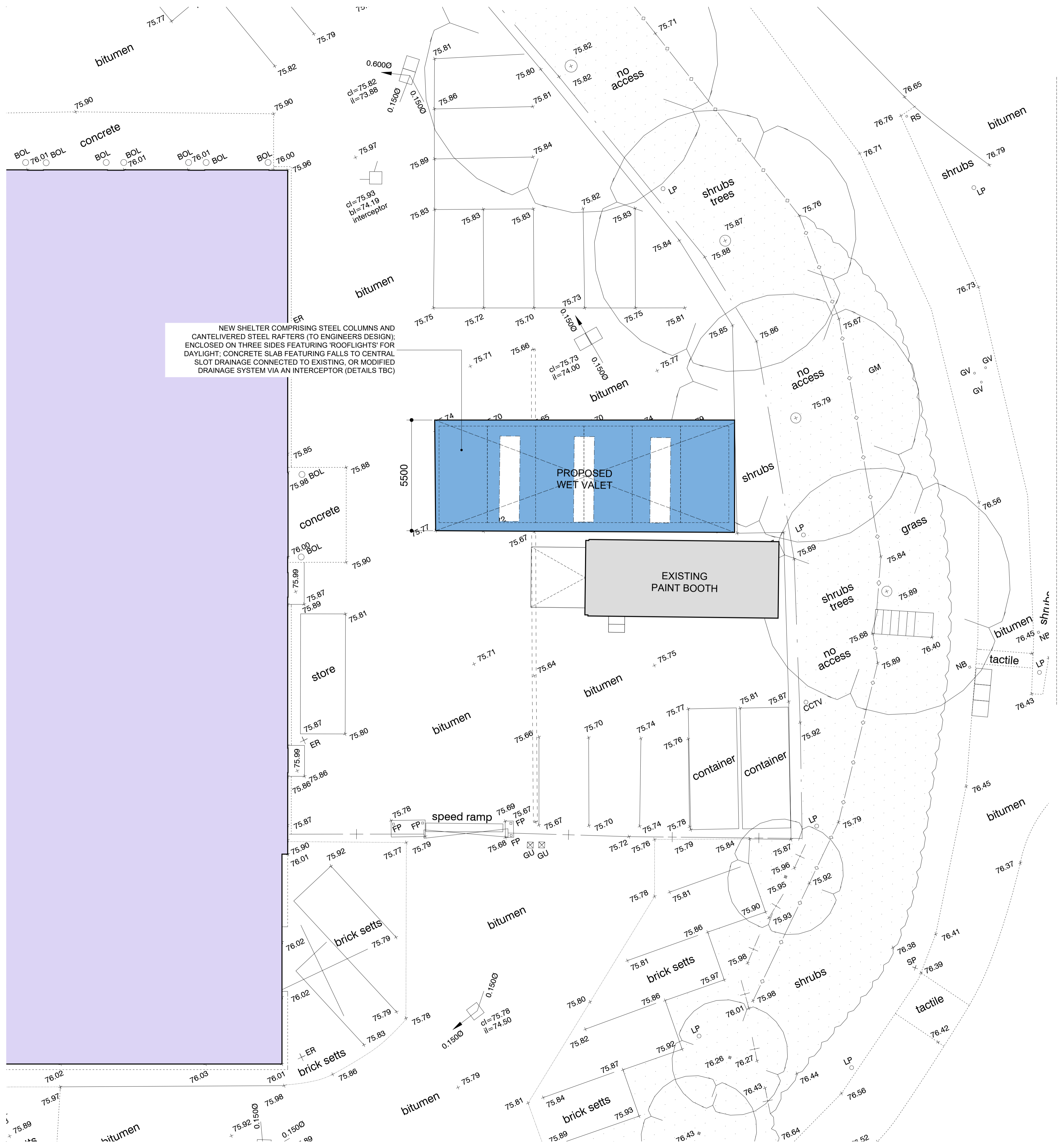
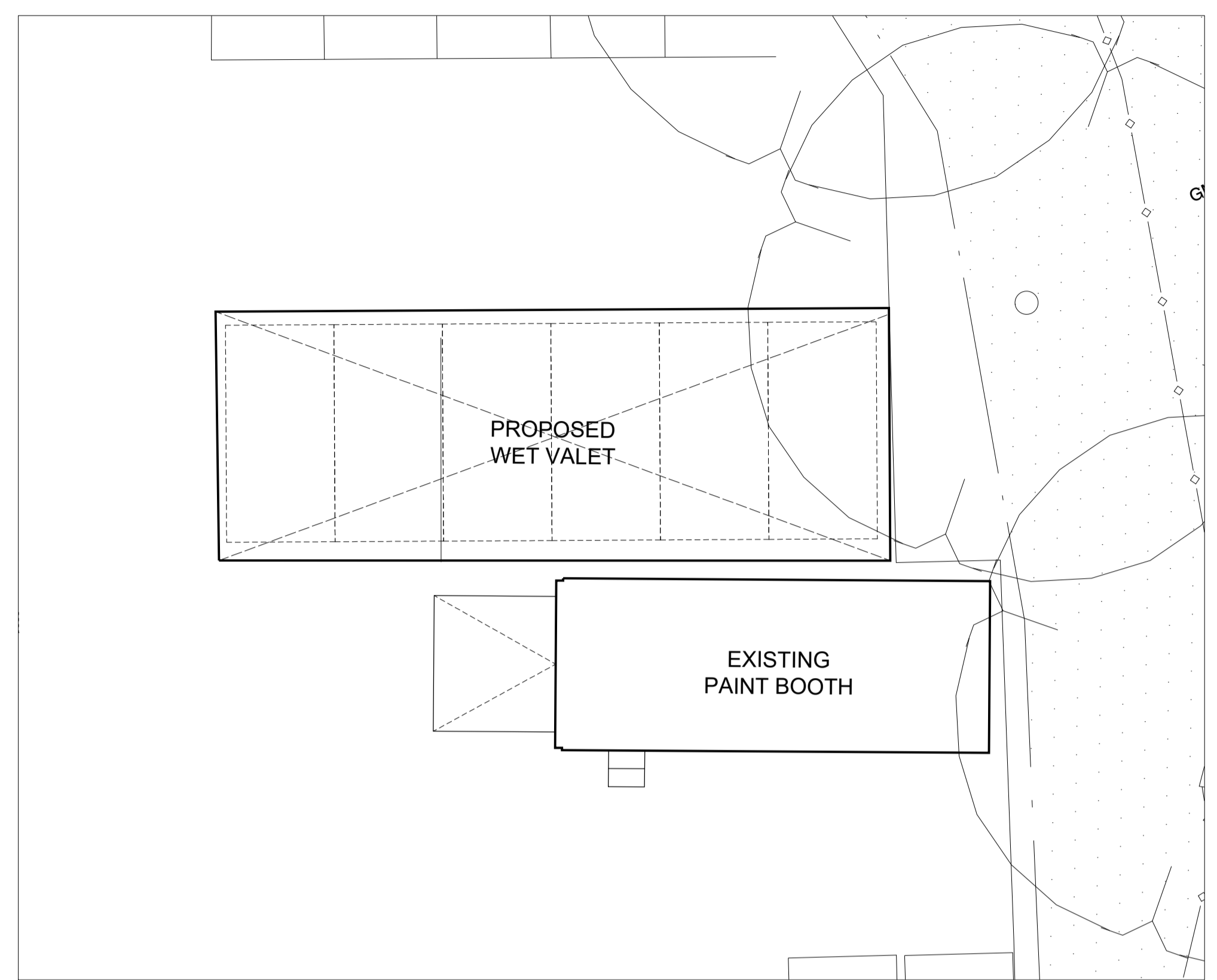


This drawing is the copyright of HNW Architects Ltd Registered No. 3589904  
 All dimensions must be verified on site prior to construction.  
 Do not scale this drawing except for Planning Application purposes.  
 Ordnance Survey Licence No. 10000200  
 Only PDF issues of this drawing are controlled. All other formats of this drawing (e.g. dwg Autocad or rvt Revit files) are un-controlled and are used at your own risk.  
 This drawing must not be copied, transmitted or passed to a third party, without written consent.

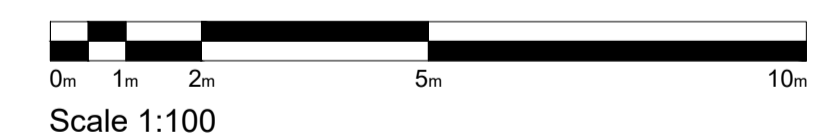
Rev	Amendments	by	chkd	Date
P1	FIRST ISSUE	DP	SD	13/12/21



NEW SHELTER COMPRISING STEEL COLUMNS AND CANTILVERED STEEL RAFTERS (TO ENGINEERS DESIGN); ENCLOSED ON THREE SIDES FEATURING 'ROOFLIGHTS' FOR DAYLIGHT; CONCRETE SLAB FEATURING FALLS TO CENTRAL SLOT DRAINAGE CONNECTED TO EXISTING, OR MODIFIED DRAINAGE SYSTEM VIA AN INTERCEPTOR (DETAILS TBC)



EXTRACT OF PARKING UNDER CANOPY  
SCALE 1:100



Project  
**PORSCHE CENTRE  
HATFIELD**

Drawn By: DP    Checked By: SD    HNW Project No.: 19030    Date Created: DEC. 21

Scale  
A1- 1:100

Drawing Title  
**PROPOSED SITE PLAN**

Drawing Status: PRELIMINARY    Revision: P1

Drawing Number  
19030-HNW-ZZ-ZZ-DR-A-2100

61 North Street, Chichester, West Sussex, PO19 1NB

