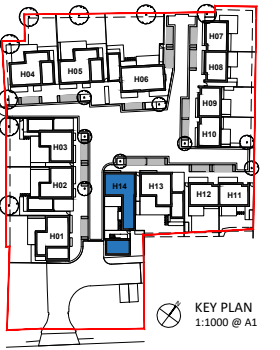


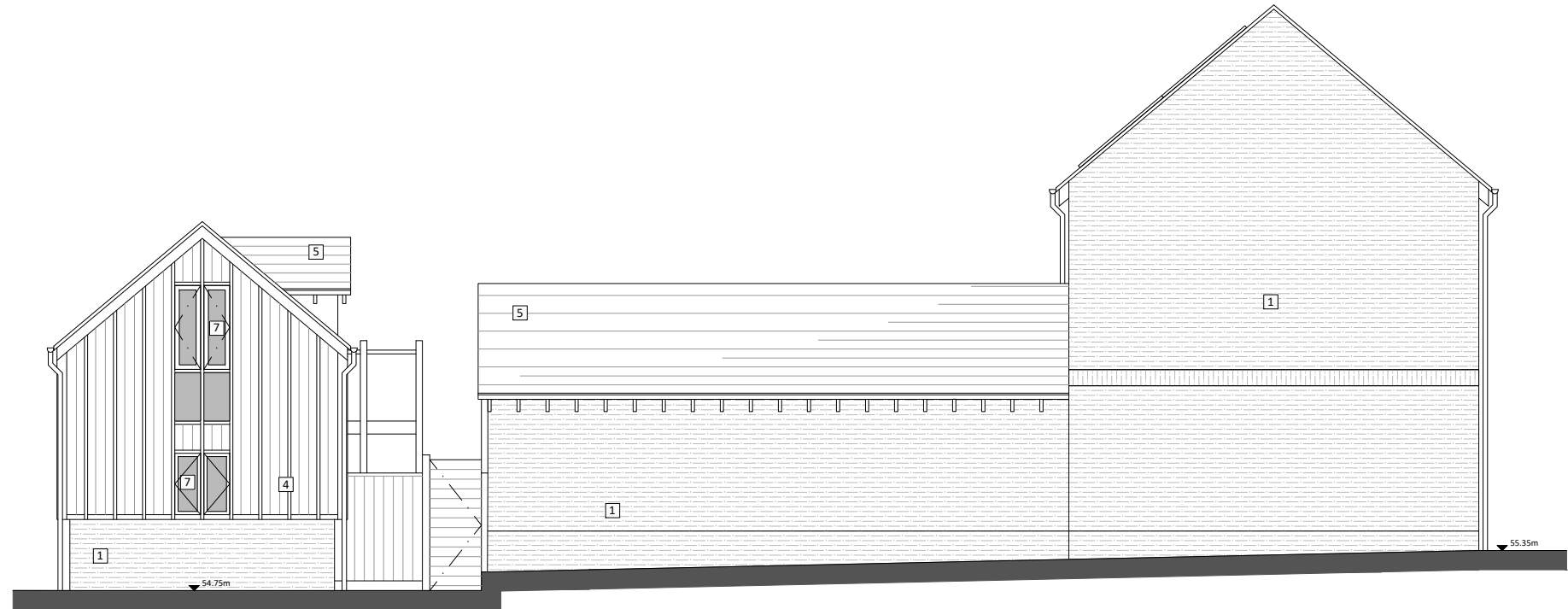
# H14



- KEY**
1. brickwork - white painted
  2. brickwork - red/brown
  3. timber panel - natural finish
  4. timber - painted black
  5. roof slate - grey
  6. metal roof sheet - grey
  7. flush casement window - grey
  8. sliding door - grey
  9. metal balustrade - grey
  10. photovoltaic panel
  11. rooflight



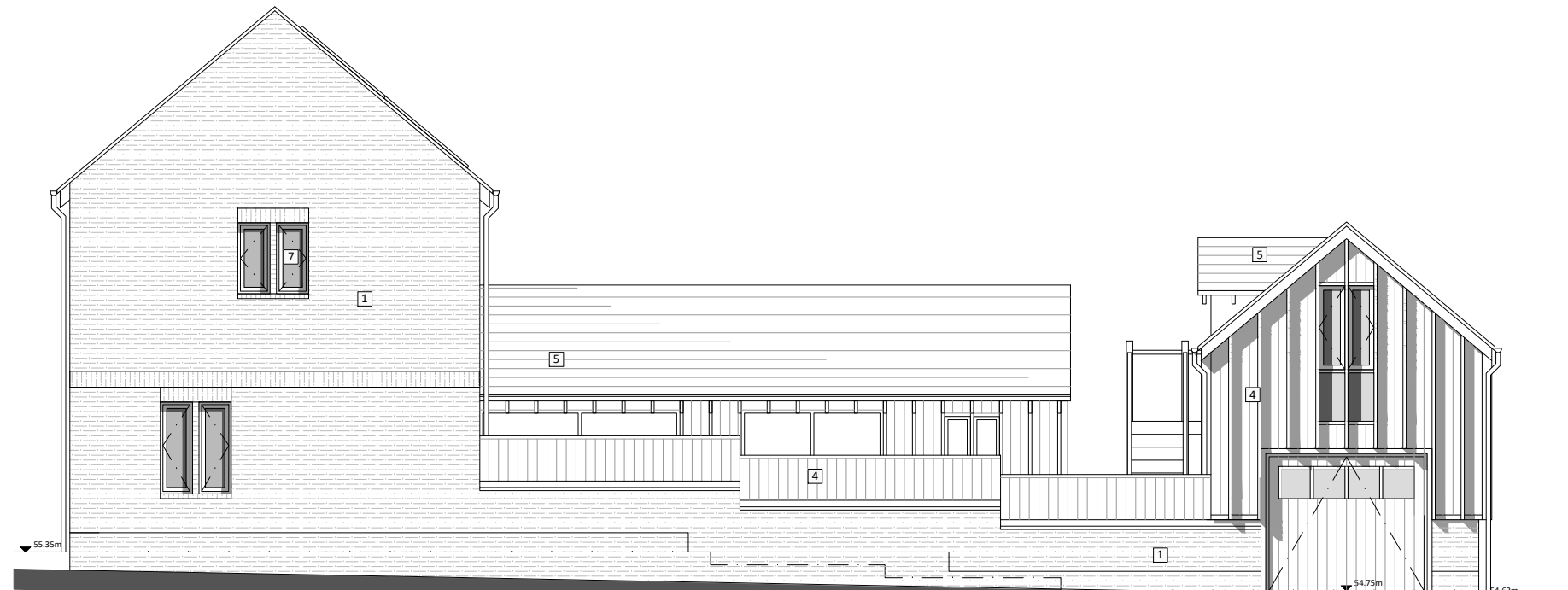
REAR (SE) ELEVATION



LH SIDE (NE) ELEVATION



FRONT (NW) ELEVATION



RH SIDE (SW) ELEVATION

Rev	Notes	dd.mm.yy	By	Auth
1				
2				
3				
4				
5				
6				
7				
8				
9				
10				
11				

**NOTES**

CONSULTANTS

- Refer to highways consultant's drawings for details
- Refer to landscape consultant's drawings for details
- Landscaping layout is indicative only

AREAS

- Refer to area schedule



**KING & CO**  
PROPERTY DEVELOPMENT & INVESTMENT  
EST. 1920  
Marquis House, 68 Great North Road, Hatfield, AL9 5ER  
www.kingandcompany.co.uk

Date: Nov 2020  
Drawn by: TA  
Checked by: JC  
Scale @A1: 1:50  
Scale @A3: 1:100  
CAD File No:

WELLS FARM  
Northaw Road East, Cuffley  
PROPOSED H14  
ELEVATIONS  
**PLANNING**  
1718 .. .. P1-142

Revision
-