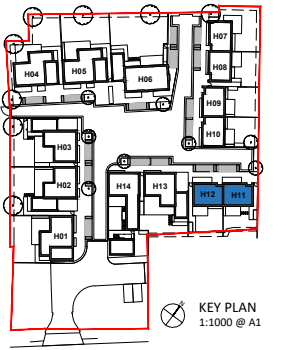


H11-12

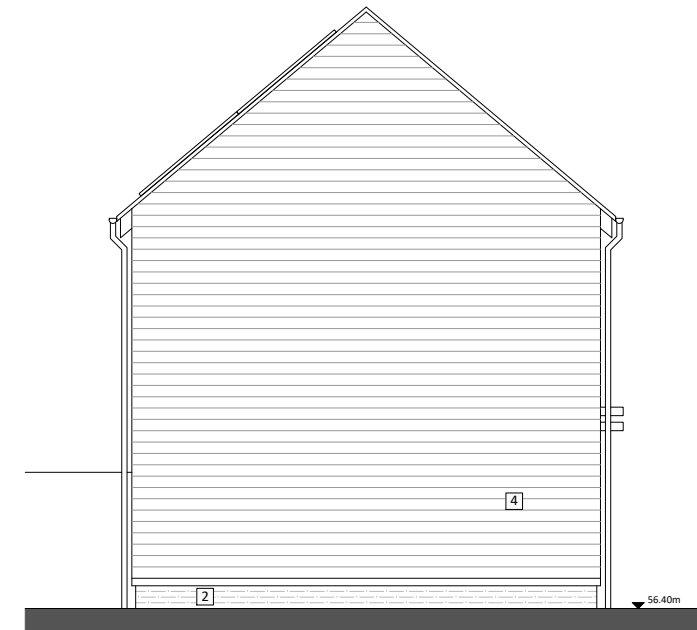


KEY

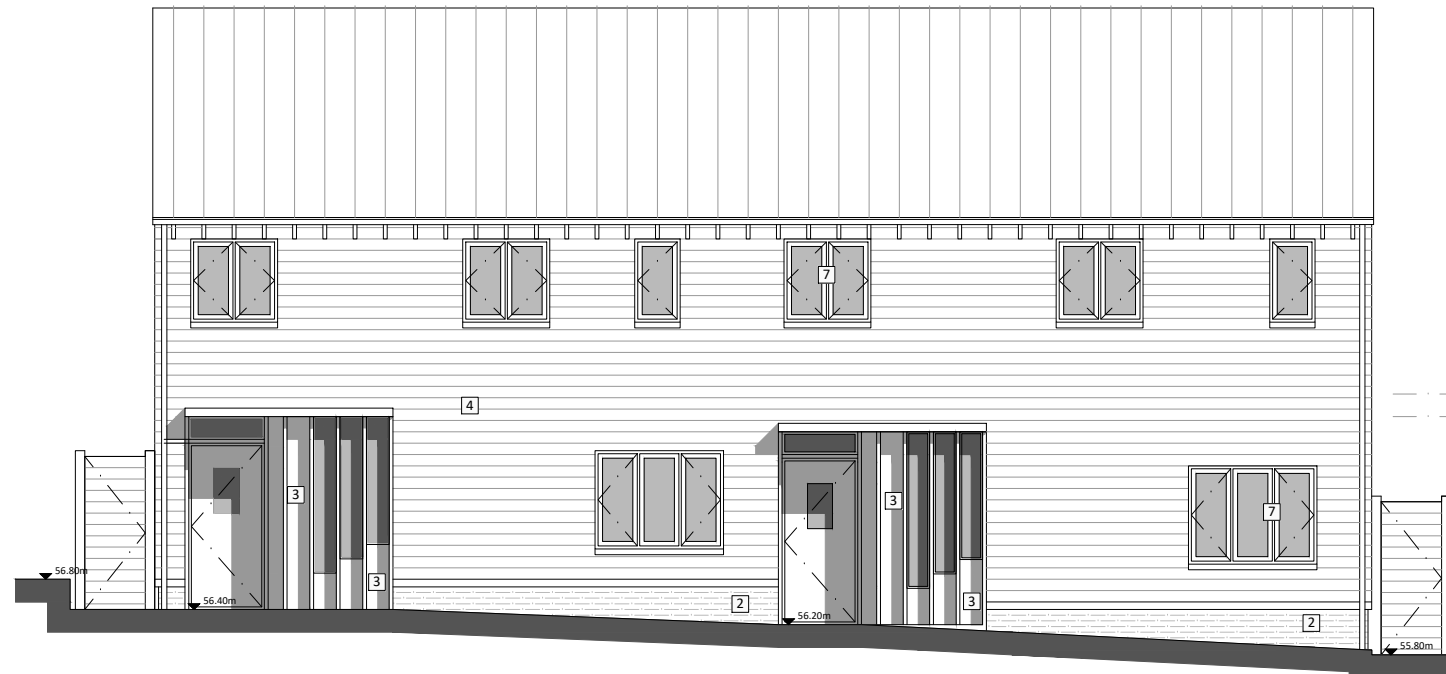
1. brickwork - white painted
2. brickwork - red/brown
3. timber panel - natural finish
4. timber - painted black
5. roof slate - grey
6. metal roof sheet - grey
7. flush casement window - grey
8. sliding door - grey
9. metal balustrade - grey
10. photovoltaic panel
11. rooflight



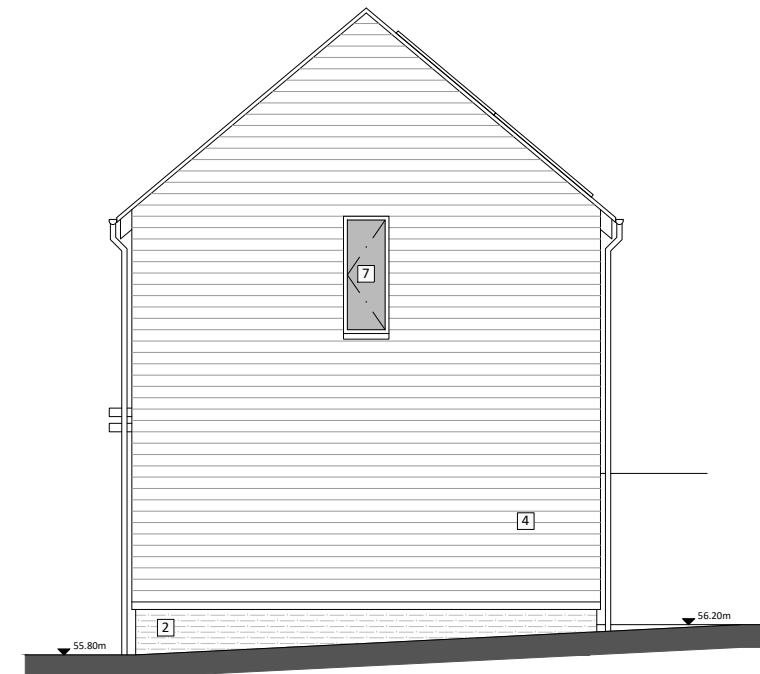
REAR (SE) ELEVATION



LH SIDE (NE) ELEVATION



FRONT (NW) ELEVATION



RH SIDE (SW) ELEVATION

Rev	Notes	dd.mm.yy	By	Auth
1		dd.mm.yy	By	Auth



KING & CO
PROPERTY DEVELOPMENT & INVESTMENT
EST. 1920
Marquis House, 68 Great North Road, Hatfield, AL9 5ER
www.kingandcompany.co.uk

Date: Nov 2020
Drawn by: TA
Checked by: JC
Scale @A1: 1:50
Scale @A3: 1:100
CAD File No:

WELLS FARM
Northaw Road East, Cuffley
PROPOSED H11-12
ELEVATIONS
PLANNING
1718 P1-112

Revision