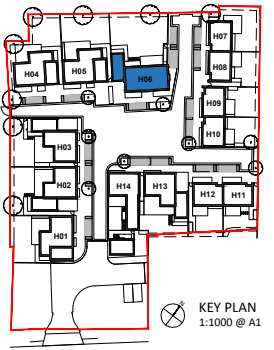


H06



KEY PLAN
1:1000 @ A1

KEY

- 1. brickwork - white painted
- 2. brickwork - red/brown
- 3. timber panel - natural finish
- 4. timber - painted black
- 5. roof slate - grey
- 6. metal roof sheet - grey
- 7. flush casement window - grey
- 8. sliding door - grey
- 9. metal balustrade - grey
- 10. photovoltaic panel
- 11. rooflight



REAR (NW) ELEVATION



LH SIDE (SW) ELEVATION



FRONT (SE) ELEVATION



RH SIDE (NE) ELEVATION

NOTES
CONSULTANTS
- Refer to highways consultant's drawings for details
- Refer to landscape consultant's drawings for details
- Landscaping layout is indicative only
AREAS
- Refer to area schedule

Rev	Notes	dd.mm.yy	By	Auth



KING & CO
PROPERTY DEVELOPMENT & INVESTMENT
EST. 1920
Marquis House, 68 Great North Road, Hatfield, AL9 5ER
www.kingandcompany.co.uk

Date: Nov 2020
Drawn by: TA
Checked by: JC
Scale @A1: 1:50
Scale @A3: 1:100
CAD File No:

WELLS FARM
Northaw Road East, Cuffley
PROPOSED H06
ELEVATIONS
PLANNING
1718 P1-062

Revision