

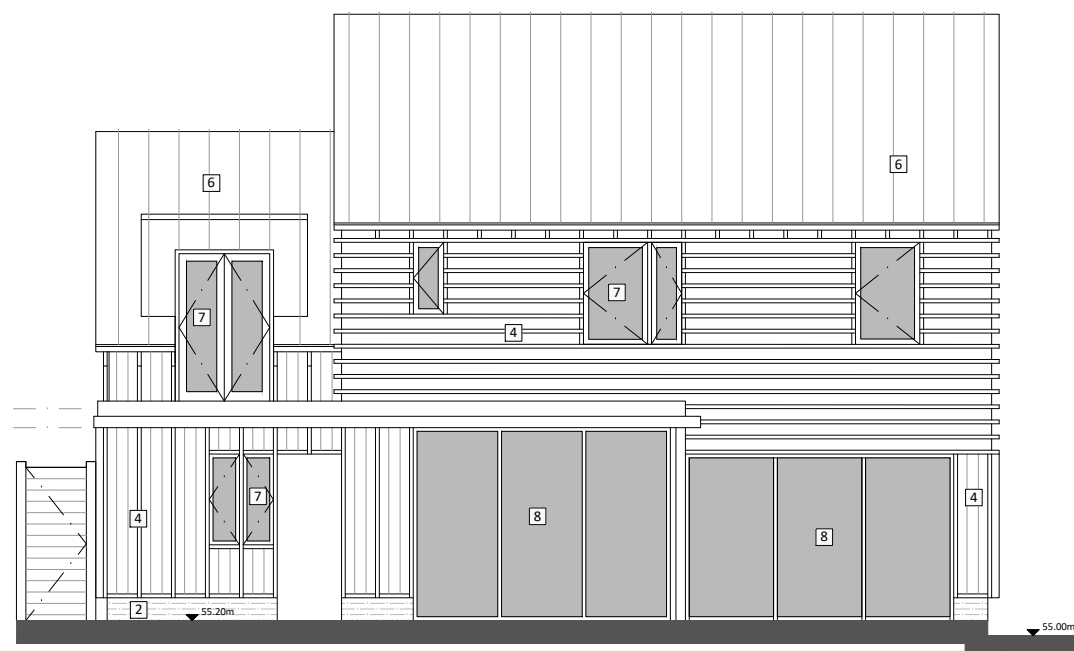
H05



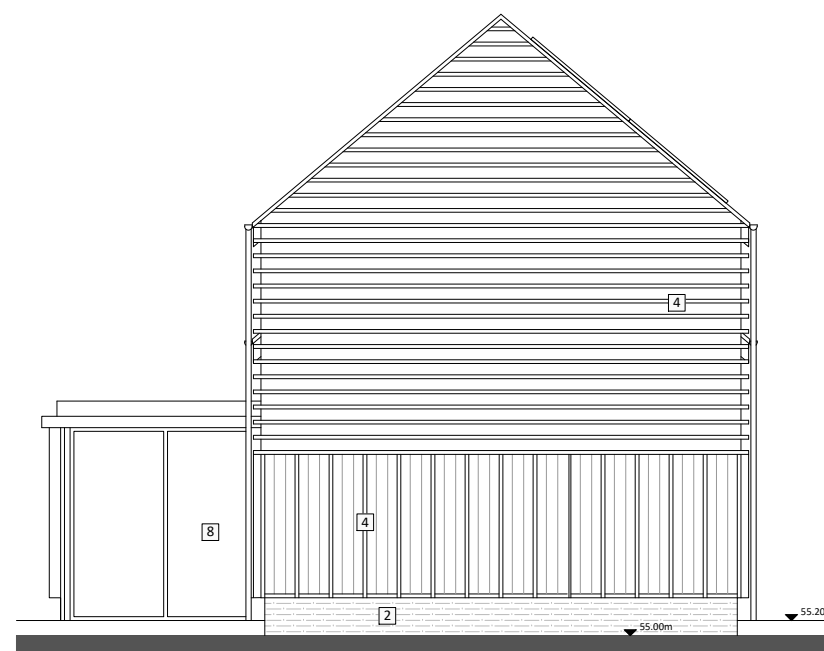
KEY PLAN
1:1000 @ A1

KEY

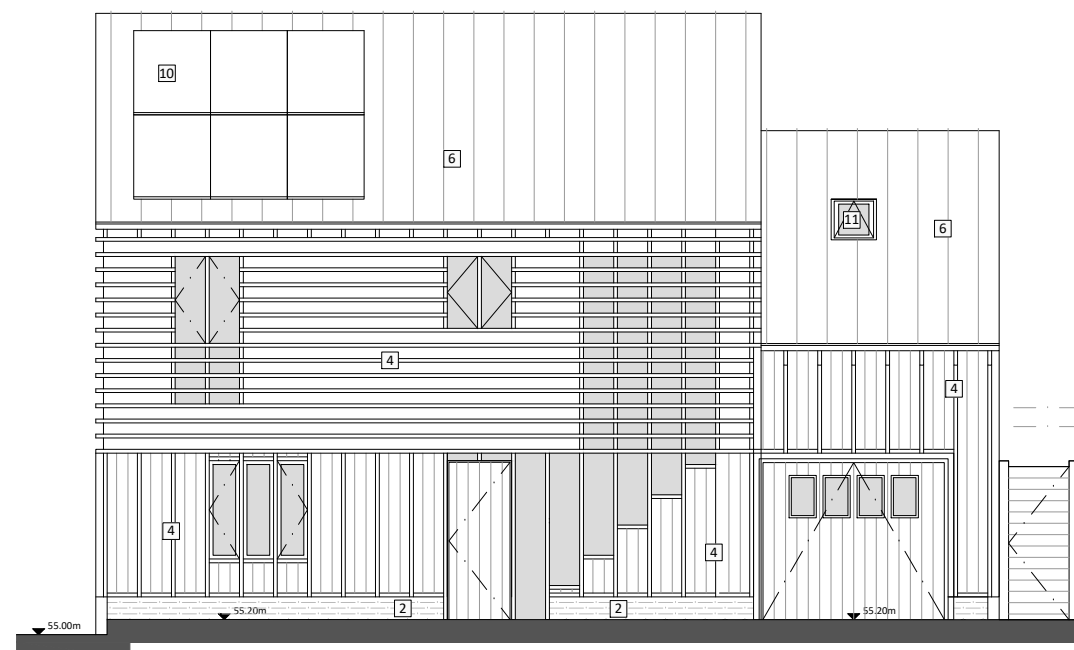
1. brickwork - white painted
2. brickwork - red/brown
3. timber panel - natural finish
4. timber - painted black
5. roof slate - grey
6. metal roof sheet - grey
7. flush casement window - grey
8. sliding door - grey
9. metal balustrade - grey
10. photovoltaic panel
11. rooflight



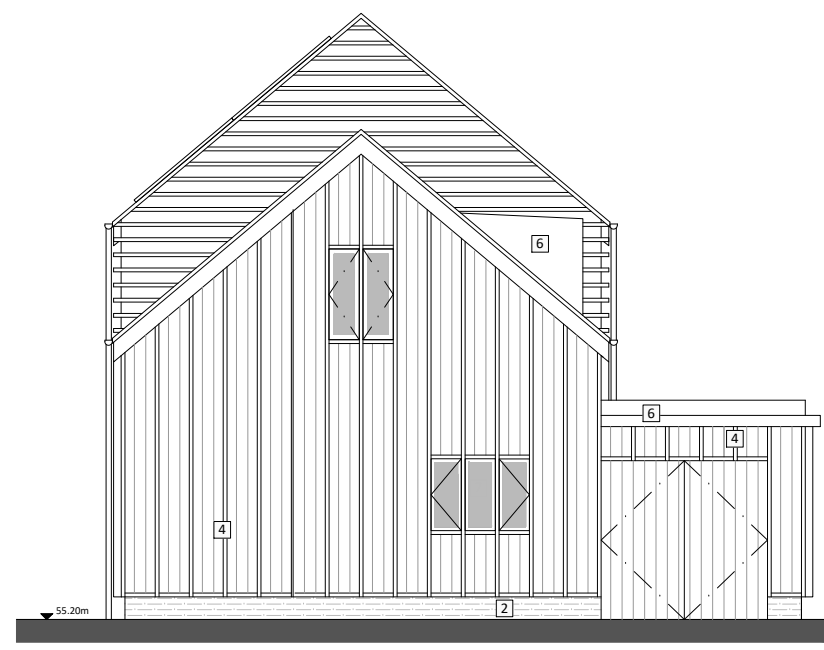
REAR (NW) ELEVATION



LH SIDE (SW) ELEVATION



FRONT (SE) ELEVATION



RH SIDE (NE) ELEVATION

NOTES
 CONSULTANTS
 - Refer to highways consultant's drawings for details
 - Refer to landscape consultant's drawings for details
 - Landscaping layout is indicative only
 AREAS
 - Refer to area schedule

Rev	Notes	dd.mm.yy	By	Auth
/		dd.mm.yy	By	Auth



KING & CO
 PROPERTY DEVELOPMENT & INVESTMENT
 EST. 1920
 Marquis House, 68 Great North Road, Hatfield, AL9 5ER
 www.kingandcompany.co.uk

Date: Nov 2020
 Drawn by: TA
 Checked by: JC
 Scale @A1: 1:50
 Scale @A3: 1:100
 CAD File No:

WELLS FARM
 Northaw Road East, Cuffley
 PROPOSED H05
 ELEVATIONS
PLANNING
 1718 P1-052

Revision